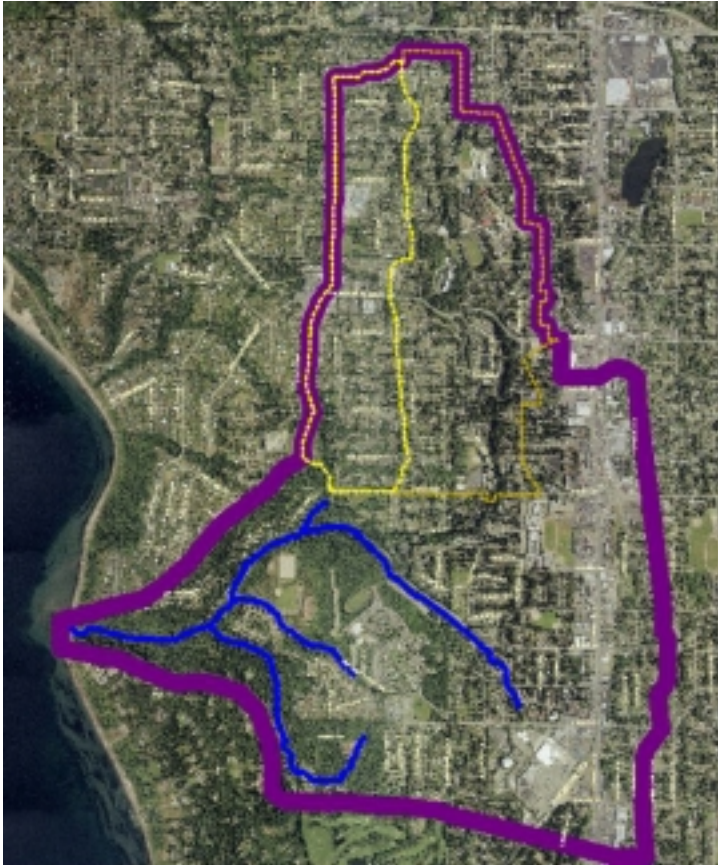




**Community Open House #2
Sunset Elementary School
Gymnasium/Cafeteria
March 14, 2001 7 - 8:30 PM**

3rd Avenue NW Drainage Improvements PROJECT INFORMATION SHEET



Boeing Creek Watershed

The Boeing Creek Watershed is an urban stream that has experienced the same impacts from development as most urban streams. Fish and other wildlife use the lower portions of the creek and forested corridor for habitat. Erosion has been an ongoing problem for several years. Transported sediment gets redeposited in Hidden Lake and requires annual maintenance to prevent the lake from filling. Undersized stormwater conveyance pipes have led to local neighborhood flooding in the watershed.

Flooding Problems

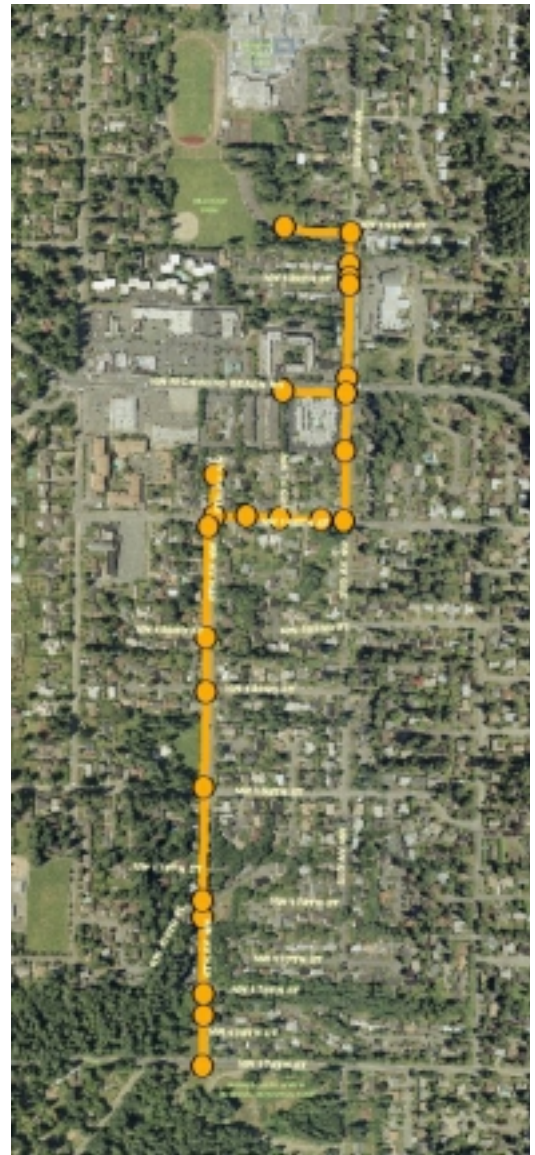
Since before 1980, several homes and adjacent streets in the area between 3rd Avenue and 6th Avenue and between 176th Street and Richmond Beach Road have been experiencing flooding problems. The neighborhoods are located in an area that used to be a natural drainage course to Boeing Creek. Urbanization of the area over the past half century has resulted in a greater volume of stormwater runoff than the existing conveyance system can handle.



EXISTING CONDITIONS



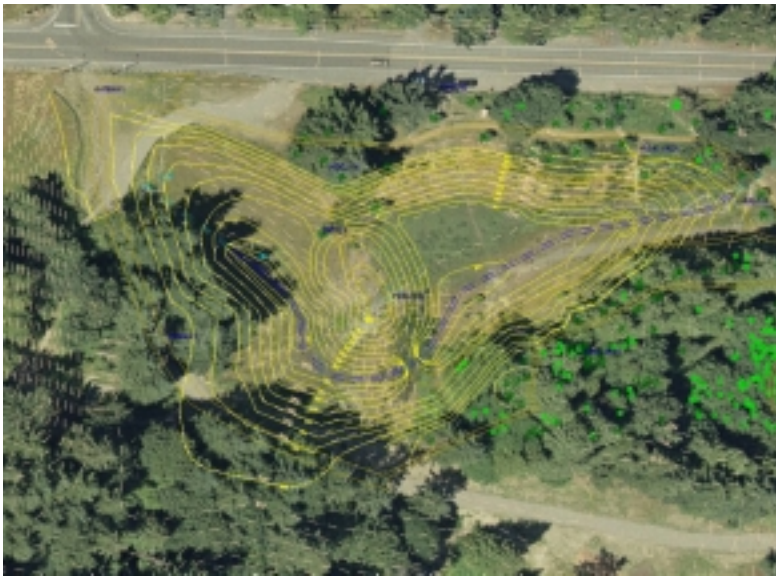
Option 1 - 3rd Avenue Stormwater Conveyance Improvements



Option 2 - 6th Avenue Stormwater Conveyance Improvements

CONVEYANCE SOLUTIONS

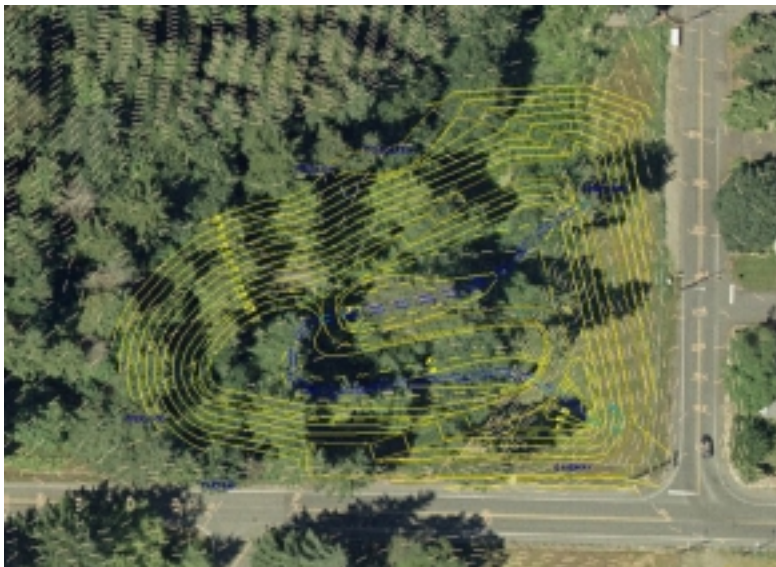
The solution to the flooding problems in this neighborhood will require a new stormwater conveyance line. The City has identified two alternative routes for a new stormwater conveyance line. Existing storm sewer from side streets would be converted to the new mainline.



Option 1 - Expanding Existing Boeing Creek North Stormwater Detention Pond

ADVANTAGES:

- Improve control of discharge to Boeing Creek.
- Opportunity to make aesthetic improvements to park.
- No new park space dedicated to surface water management.



Option 2 - Construct New Boeing Creek Open Space Stormwater Detention Pond

ADVANTAGES:

- Improve control of discharge to Boeing Creek.
- Opportunity to develop park space.
- Allows for future expansion of Boeing Creek North Detention Pond to mitigate for flooding along Dayton Avenue North.

DETENTION MITIGATION

Construction of a new stormwater conveyance line will more quickly drain water that currently escapes the storm sewer and collects as flood water in streets and private yards. Discharge of this flood water to Boeing Creek would cause additional problems to stream habitat and erosion to stream banks. To mitigate for these impacts, this project will first have to construct new stormwater storage volume. Two alternate locations have been identified.