



LIGHT RAIL IS COMING!

HELP SHAPE WHAT CHANGE WILL LOOK LIKE ALONG SHORELINE'S LIGHT RAIL CORRIDOR

Station Area Visioning

Light rail service to Shoreline is scheduled to begin in 2023, but planning begins now.

Help shape the changes coming to our City by participating in one of the upcoming station area visioning workshops. Hosted by different community groups, the visioning workshops will provide the City with high-level conceptual guidance as it develops design workshops to be held this fall. Visioning provides people with an opportunity to identify features that they want preserved and describe new amenities they would like to see incorporated in Shoreline's station areas.



How will people get to the station areas?



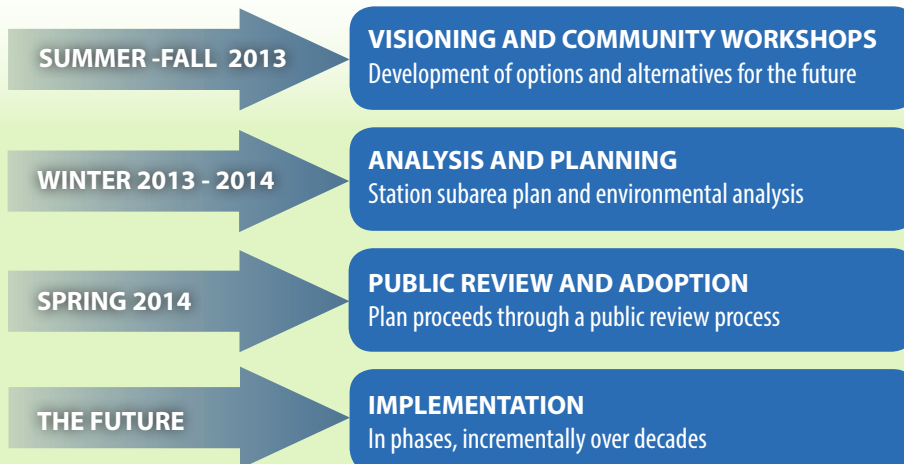
Draft Environmental Impact Statement

Also this summer, Sound Transit will be releasing the Draft Environmental Impact Statement (EIS) for the Lynnwood Link light rail project. Once released, the public will have at least 45 days to provide public comment. The Draft EIS analysis includes alternatives for station locations at either 145th or 155th Streets, and the comment period is a key opportunity to express concerns or preferences, including with regard to station location.

How will the station areas transform over time?



THE PATH AHEAD



STATION AREA VISIONING WORKSHOPS

Thursday, Aug. 1
6:00 to 8:00 p.m.
Unitarian Universalist Church
14724 1st Avenue NE

This visioning exercise will be hosted by the City and Parkwood and Ridgecrest Neighborhood Associations and focus on the NE 145th and NE 155th Street station areas.

Thursday, Sept. 19
6:00 to 8:00 p.m.
Shoreline City Hall
17500 Midvale Avenue N

Hosted by the City, this final visioning event will collate comments from the previous visioning events and provide additional opportunity for input before moving on to design workshops later in the fall.

MORE INFORMATION

Station Area Planning:
Senior Planner Miranda Redinger
mredinger@shorelinewa.gov, (206) 801-2513

Sound Transit Draft EIS:
Senior Transportation Planner Alicia McIntire
amcintire@shorelinewa.gov, (206) 801-2483

shorelinewa.gov/lightrail



How do we support sustainable development?