



# LIGHT RAIL IS COMING!

HELP SHAPE WHAT CHANGE WILL LOOK LIKE ALONG SHORELINE'S LIGHT RAIL CORRIDOR

## Station Area Visioning

Light rail service to Shoreline is scheduled to begin in 2023, but planning begins now.

Help shape the changes coming to our City by participating in one of the upcoming station area visioning workshops. Hosted by different community groups, the visioning workshops will provide the City with high-level conceptual guidance as it develops design workshops to be held this fall. Visioning provides people with an opportunity to identify features that they want preserved and describe new amenities they would like to see incorporated in Shoreline's station areas.



How will people get to the station areas?



## Draft Environmental Impact Statement

Sound Transit has released the Draft Environmental Impact Statement (EIS) for the Lynnwood Link light rail project. The public has until September 23 to provide comment. The Draft EIS analysis includes alternatives for station locations at either 145th or 155th Streets, and the comment period is a key opportunity to express concerns or preferences, including with regard to station location.

How will the station areas transform over time?



## STATION AREA VISIONING WORKSHOPS

**Thursday, Sept. 19**  
**6:00 to 8:00 p.m.**  
**Shoreline City Hall**  
**17500 Midvale Avenue N**

Hosted by the City, this final visioning event will collate comments from the previous visioning events and provide additional opportunity for input.

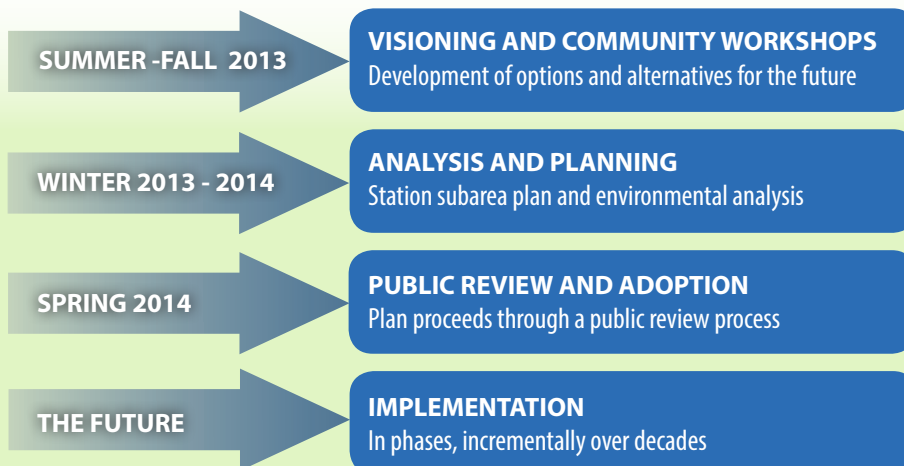
## MORE INFORMATION

**Station Area Planning:**  
 Senior Planner Miranda Redinger  
 mredinger@shorelinewa.gov  
 (206) 801-2513

**Sound Transit Draft EIS:**  
 Senior Transportation Planner  
 Alicia McIntire  
 amcintire@shorelinewa.gov  
 (206) 801-2483

[shorelinewa.gov/lightrail](http://shorelinewa.gov/lightrail)

## THE PATH AHEAD



How do we support sustainable development?