

# Light Rail Station Area Planning

May 2, 2013

Joint City Council/Planning Commission Meeting



# Consultant Team

- Led by OTAK- Project Manager  
Mandi Roberts
- Fehr & Peers
- BAE Urban Economics
- Envirolssues

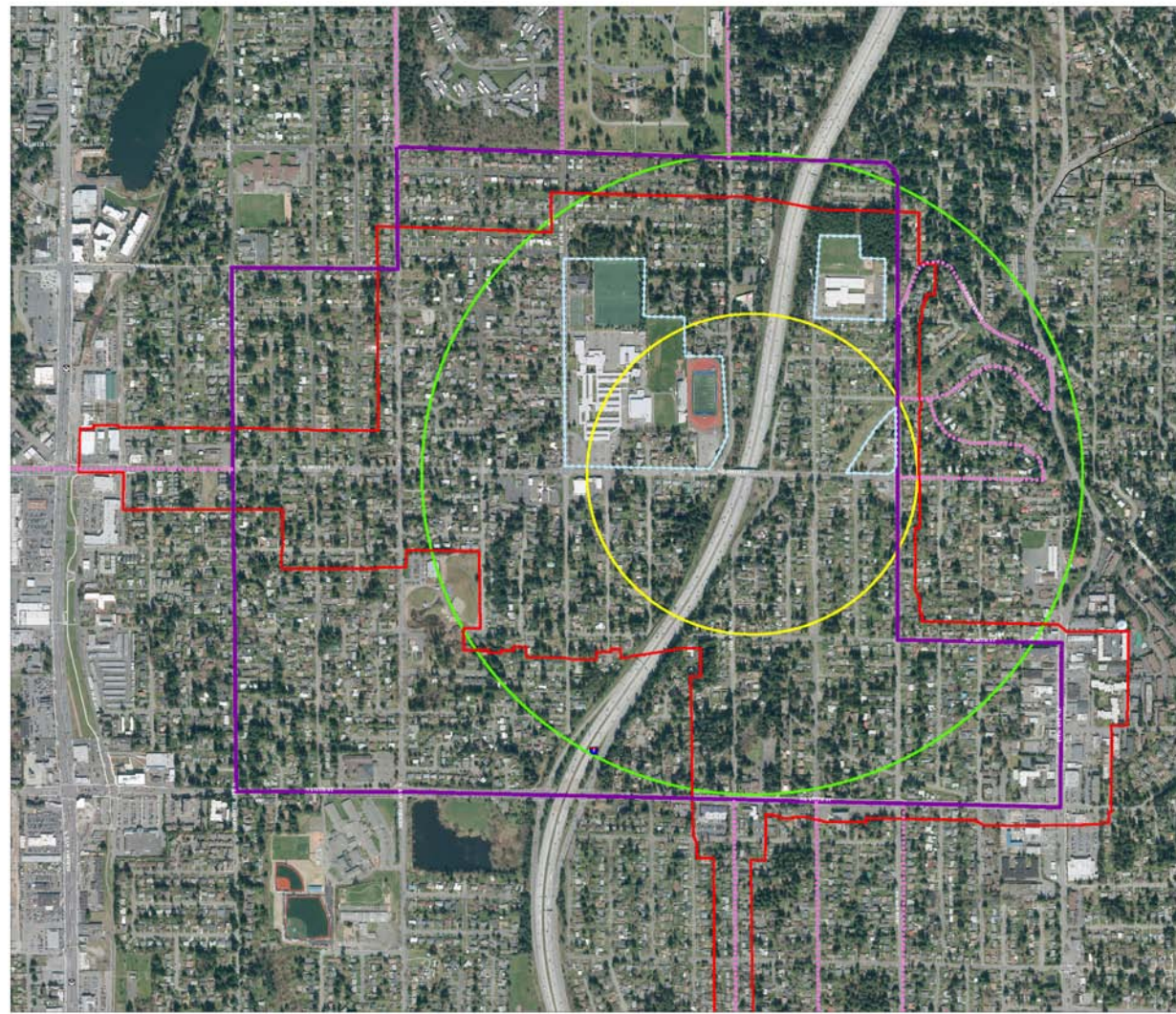
# Study Area Boundary Criteria:

- Walk and bike travel sheds
- Topography
- Comprehensive Plan policy direction
- Existing conditions
- Jurisdictional
- Homeowner preference

Draft

### NE 185th St Rail Station







-  Mobility Study Area
-  Arterial included in Mobility Study
-  Land Use Study Area
-  Opportunity Site
-  1/4 Mile from proposed station
-  1/2 Mile from proposed station

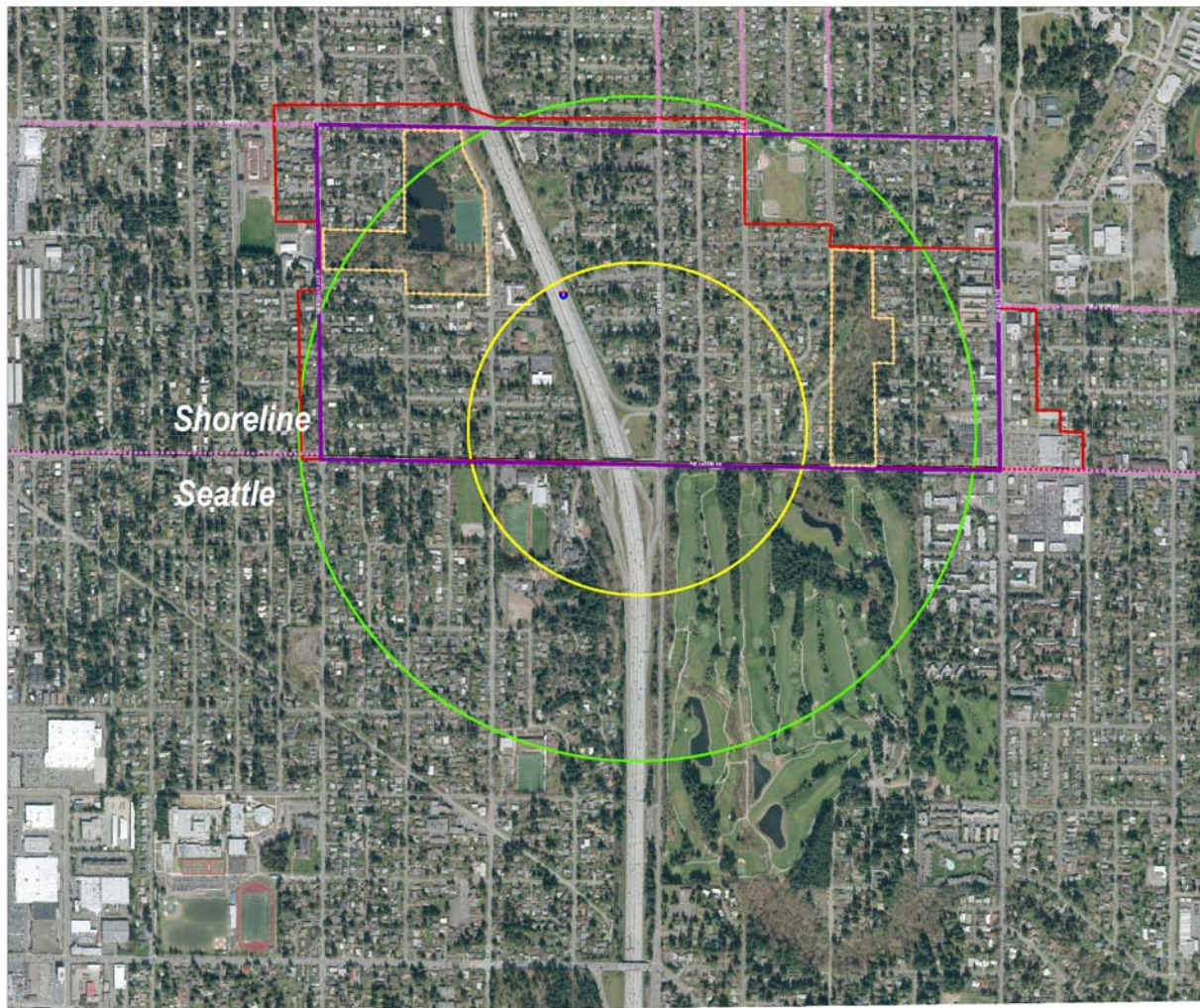




Draft

### NE 145th St Rail Station

-  Mobility Study Area
-  Actual included in Mobility Study
-  Primary
-  Environmental Asset
-  1/4 Mile from proposed station
-  1/2 Mile from proposed station



0 237.5 475 950 Feet



# Citizen Advisory Function

- 185SCC
- Futurewise
- Senior Services
- PSRC Growing Transit Communities
- Planning Commission committee
- Coming soon- 145<sup>th</sup> (or 155<sup>th</sup>) SCC

# May 22 Community Meeting

- Introductions and roles
- Background and timeline
- Public participation process
- DEIS
- Study area boundaries
- Q&A

# General Direction

- Expectations
- Questions?