

# Light Rail Station Subarea Study Boundaries - Comprehensive Plan Amendment

June 20, 2013

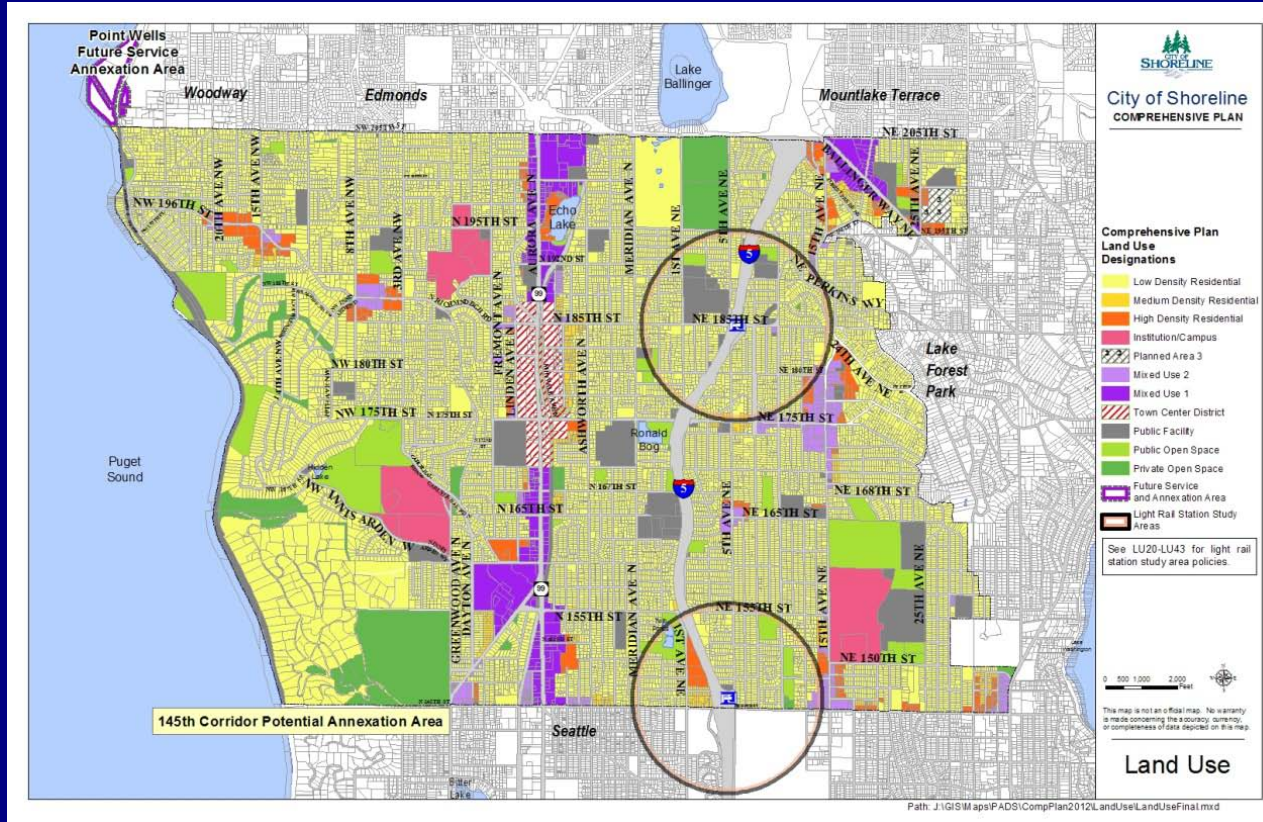
Planning Commission Meeting



# Background

Initial study area boundaries were purposefully vague placeholders until staff had the opportunity to engage the public, develop criteria, and tour the station areas.

# Current Comp Plan



# Study Area Boundary Criteria:

- Walk and bike travelsheds
- Topography
- Comprehensive Plan policy direction
- Existing conditions
- Jurisdictional
- Homeowner preference

# PC/CC Joint Meeting

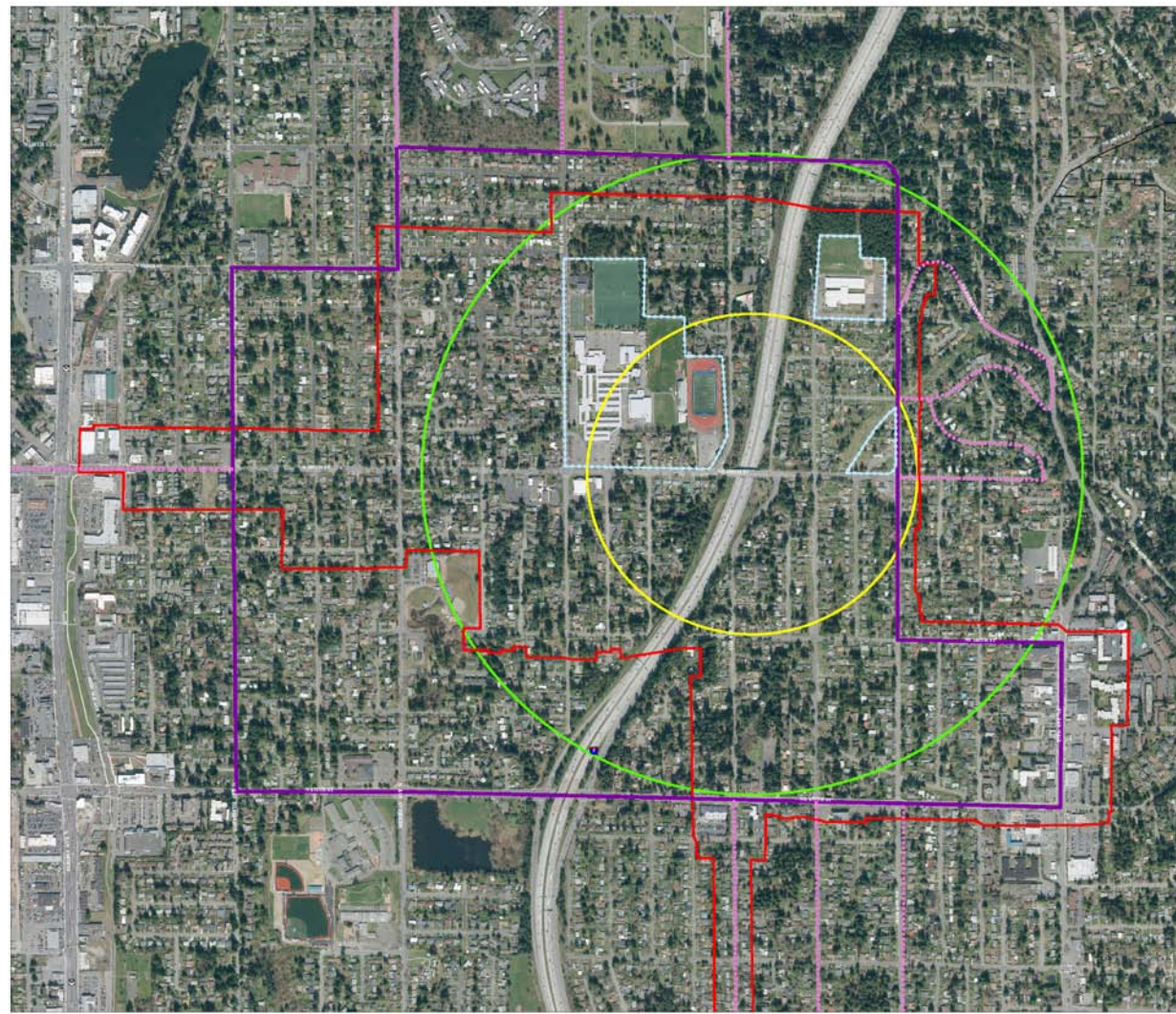
- Planning Commission and City Council agreed on Study Area Boundaries at their joint meeting on May 2<sup>nd</sup> for the Open House on May 22nd



Draft







### NE 185th St Rail Station

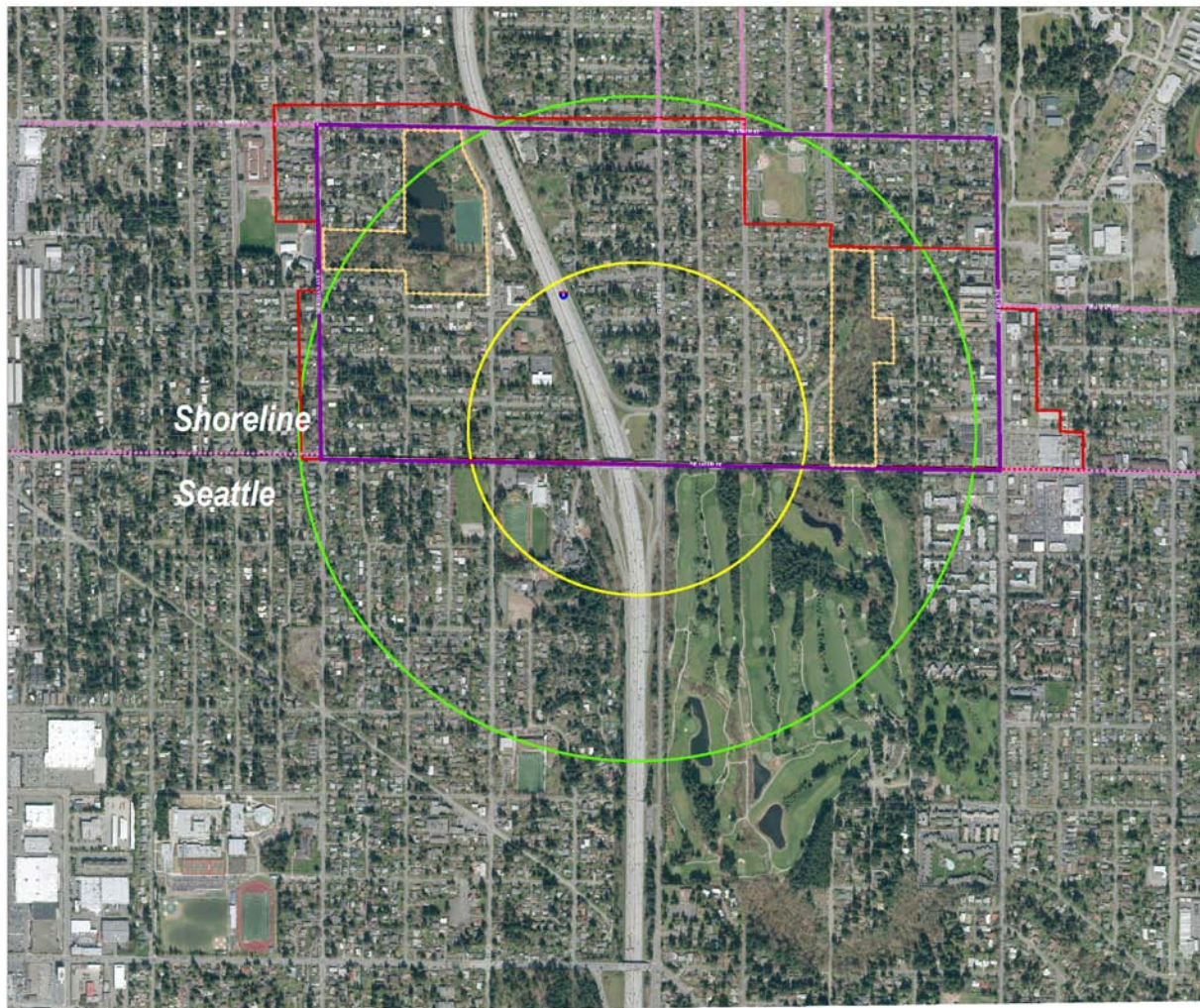
-  Mobility Study Area
-  Arterial included in Mobility Study
-  Land Use Study Area
-  Opportunity Site
-  1/4 Mile from proposed station
-  1/2 Mile from proposed station



Draft

### NE 145th St Rail Station

-  Mobility Study Area
-  Actual included in Mobility Study
-  Primary
-  Environmental Asset
-  1/4 Mile from proposed station
-  1/2 Mile from proposed station



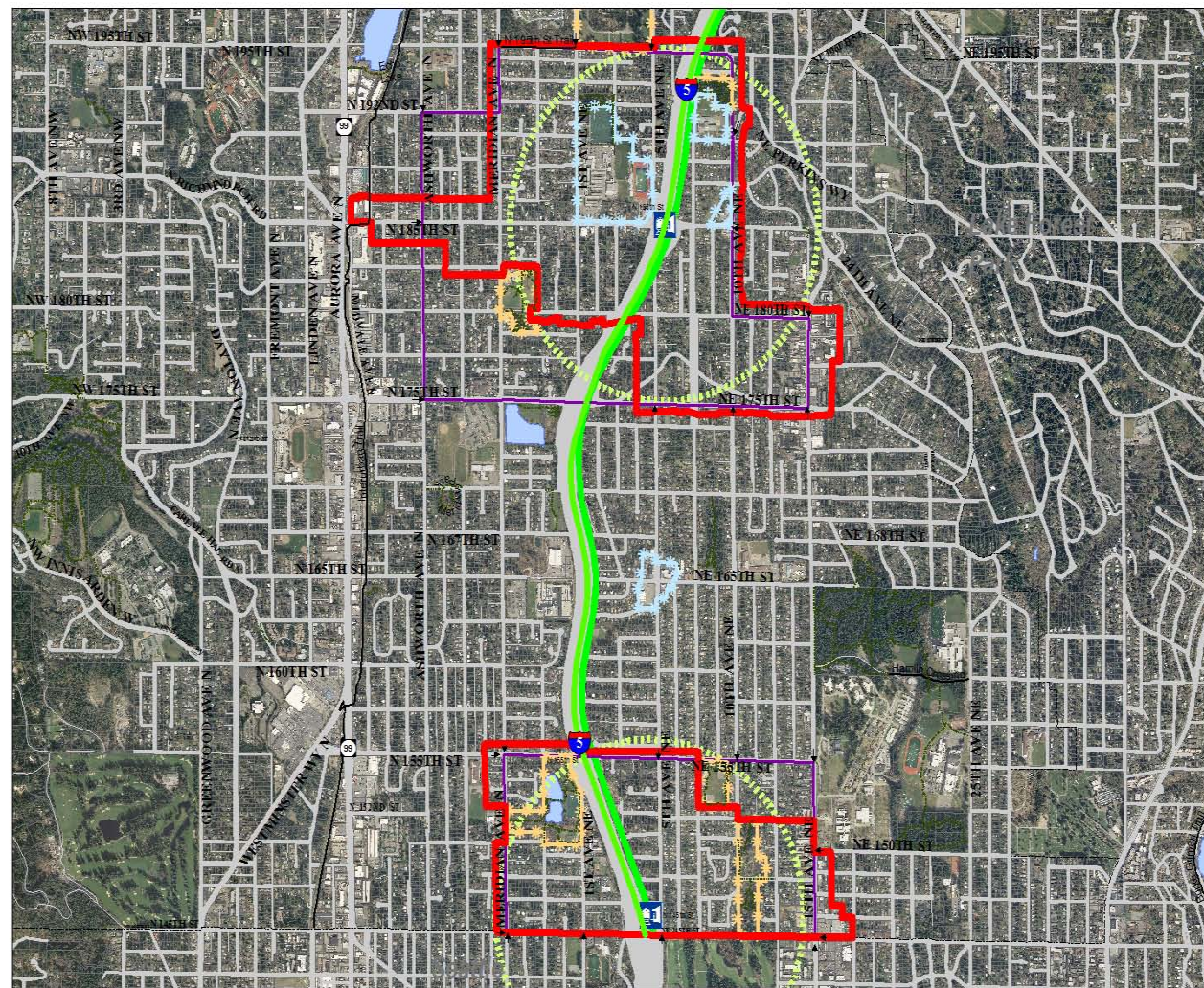
0 237.5 475 950 Feet



# Proposed Changes (Pages 15-17)

- Remove ½ mile circle
- Remove Land Use Study Area from 5<sup>th</sup>
- Remove Mobility Study from 8<sup>th</sup>
- Remove Mobility Study from NE 187<sup>th</sup> and 188<sup>th</sup>
- Add Mobility Study for Meridian and 15<sup>th</sup> Ave NE
- Add Opportunity Site at Ridgecrest commercial area
- Add Paramount Park as an Environment Asset area





### City of Shoreline Station Study Areas

- Type
- Mobility Study Area (purple outline)
- Land Use Study Area (red outline)
- Opportunity Site (light blue outline)
- Environmental Asset (yellow/orange outline)
- 5 miles from station (dashed yellow line)
- Approximate Light Rail Alignment (green line)
- Potential Access Points (arrow icon)
- Potential Station Location
- Name
- 155th Station (blue square icon)
- 145th Station (blue square icon)

