

Light Rail Station Subarea Study Boundaries - Comprehensive Plan Amendment

July 18, 2013

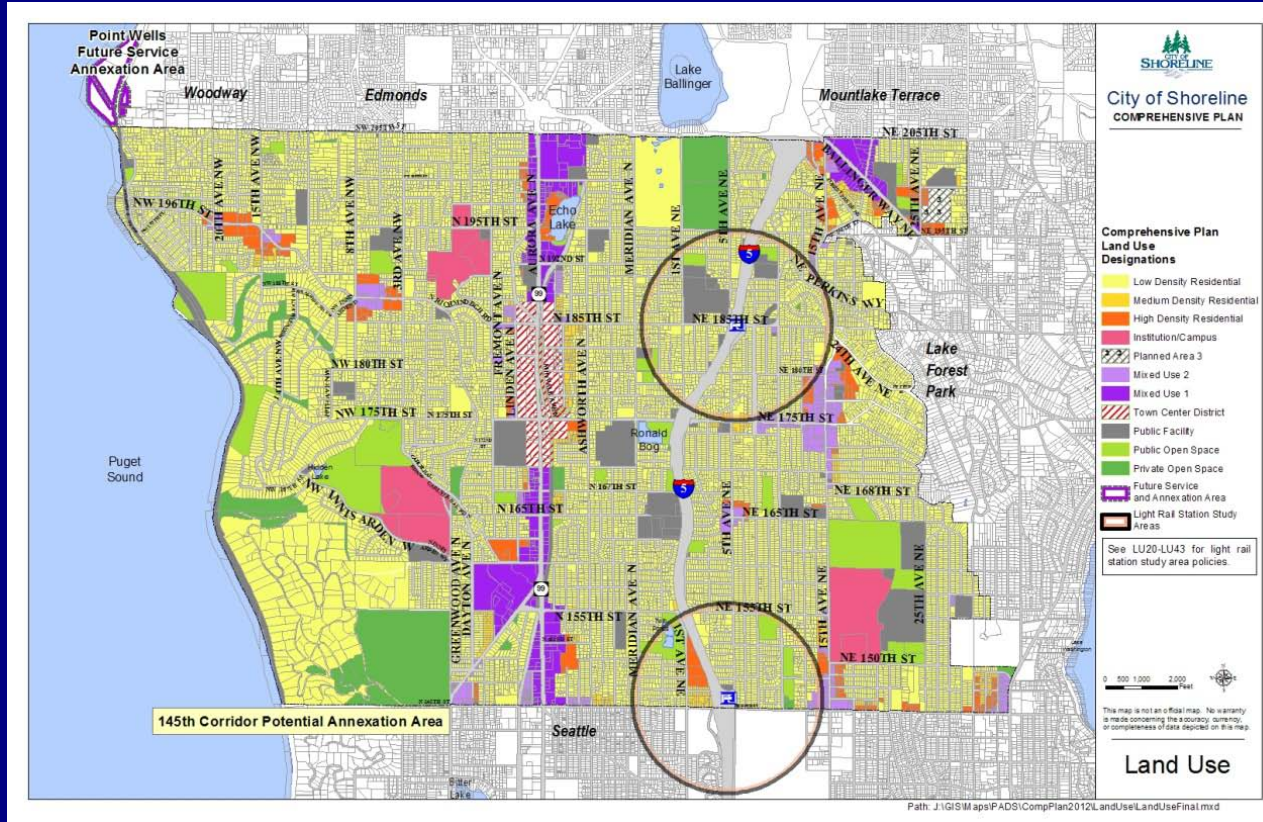
Planning Commission Meeting



Background

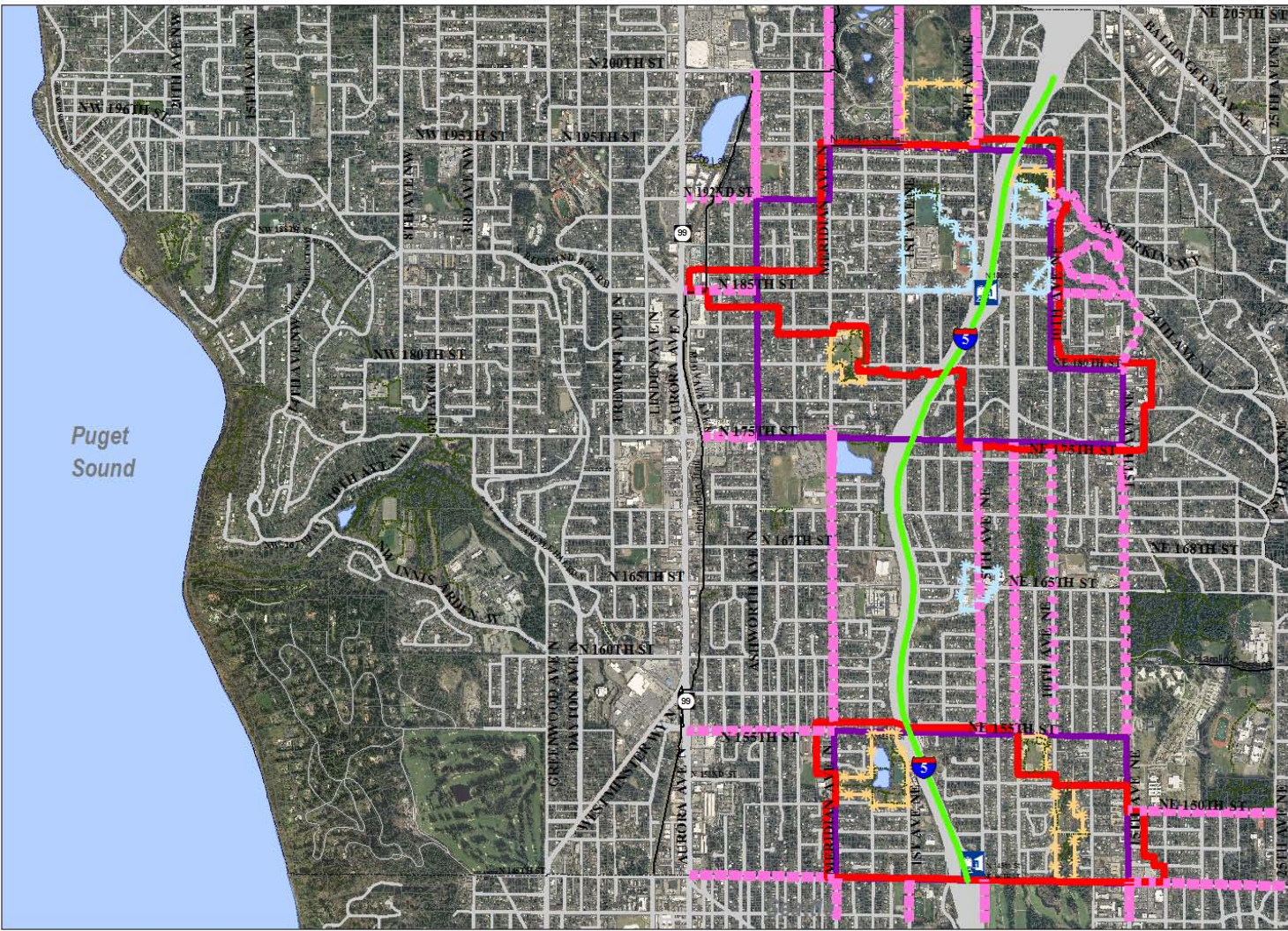
Initial study area boundaries were purposefully general placeholders until staff had the opportunity to engage the public, develop criteria, and tour the station areas.

Current Comp Plan



Proposed Changes

- Remove ½ mile circle
- Remove Land Use Study Area from 5th
- Remove Mobility Study from 8th
- Remove Mobility Study from NE 187th and 188th
- Add Mobility Study for Meridian and 15th Ave NE
- Add Opportunity Site at Ridgecrest commercial area
- Add Paramount Park as an Environment Asset area



Puget Sound

City of Shoreline
Shoreline, WA 98148

City of Shoreline Station Study Areas

- Type
 Mobility Study Area
- Type
 Land Use Study Area
- Type
 Opportunity Site
- Type
 Environmental Asset
- Type
 Appropriate Light Rail Alignment

Potential Station Location

- Name
 165th Station
- Name
 145th Station



SH

Point Wells
Future Service
Annexation Area

Woodway

Edmonds

Lake
Ballinger

Mountlake Terrace



City of Shoreline COMPREHENSIVE PLAN

Comprehensive Plan Land Use Designations

- Low Density Residential
- Medium Density Residential
- High Density Residential
- Institution/Campus
- Planned Area 3
- Mixed Use 2
- Mixed Use 1
- Town Center District
- Public Facility
- Public Open Space
- Private Open Space
- Future Service and Annexation Area

See LU20-LU43 for light rail station study area policies.

Station Study Areas Designations

- Land Use Study Area
- Mobility Study Area



This map is not an official map. No warranty is made concerning the accuracy, currency, or completeness of data depicted on this map.

Land Use

145th Corridor Potential Annexation Area

Seattle

Boyer Lake