

**APPENDIX G: PRCS BOARD LEVEL OF SERVICE WORK SESSION**



**Neighborhood Park LOS:** The current level of service is not adequate.

Neighborhood Park Strategies based on PRCS Board discussion:

- Plan and add neighborhood park amenities in the following parks:  
West of Aurora in suggested priority order:
  - a. Hillwood Park: Add path, picnic tables, establish passive grassy area, upgrade playground and replace restroom
  - b. Boeing Creek Park - Add neighborhood park amenities at 175th and 3<sup>rd</sup> Ave. per the conceptual plan that is developed
  - c. Richmond Highlands Park: Add picnic tables

Between Aurora and I-5 in suggested priority order:

- a. Improve Cromwell Park (master plan)
- b. Twin Ponds Park: Add picnic table clusters, add tot lot to playground, improve trails.
- c. Shoreline Park: Improve playground and add picnic tables
- d. Echo Lake Park: Add tot lot playground

East of I-5 in suggested priority order:

- a. Hamlin Park: Add picnic table clusters, enhance trails, replace playground, add tot lot; Consider two playgrounds in lower Hamlin; Add playground and picnic tables in upper Hamlin.
  - b. Add new park in North City area.
- Upgrade existing playgrounds and picnic facilities as part of life cycle replacement.
  - Coordinate upgrades of existing neighborhood park features with new additions of amenities to the park system.
  - Add neighborhood parks and/or neighborhood park amenities in areas of the city that have no service e.g. the North City Business District area and the area west of Highway 99 and 3<sup>rd</sup> Ave NW between 190<sup>th</sup> and 170<sup>th</sup>.

**Playgrounds LOS:** The current level of service is not adequate.

Playgrounds Strategy and Priorities:

- Playgrounds are a key neighborhood park amenity. Focus on improving playground level of service will improve neighborhood park level of service. These efforts should be coordinated.
- Upgrade substandard play structures first, (Cromwell Park, James Keough Park, Ridgecrest Park, and Northcrest Park)
- Then upgrade structures that will require replacement within 3-5 years. (Shoreline Park, Hillwood Park, Brugger's Bog, Richmond Beach Community Park, Richmond Beach Saltwater Park, and existing Hamlin Park)
- Then, expand playground opportunities at Hamlin Park Playground and add a tot lot playground at Echo Lake Park.
- Then, expand playground opportunities in the rest of the park system.
- Look for opportunities in North City and St Luke's areas of the City where there are gaps in service in playgrounds, picnic areas and neighborhood parks.

**Restrooms LOS:** The current level of service is not adequate.

Restroom Strategy:

- Replace and add restrooms to the park system.
- No priority was discussed or suggested.
- Replace Hillwood Park and Richmond Highlands Park restrooms and add new restrooms at Cromwell Park and north end of Boeing Creek Park.
- Address ADA issue at Hillwood Park, Echo Lake Park and Richmond Highlands Park restrooms.
- Sanicans at other sites acceptable with some screening and appropriate paths to and from

**Trails LOS:** The current level of service is not adequate.

Trails Strategy and Priorities:

- Focus on development of large trail systems in City's large urban parks and open space areas in the following order: Hamlin Park, Boeing Creek Park, and Innis Arden Park if parking and access to beach issues can be addressed at the Innis Arden Park Reserve site. This recognizes that the level of effort in Hamlin Park is likely to be less than the other two park areas e.g. some signing, some replanting and blocking unwanted trails.
- Review private property reserves located between Boeing Creek Park and City's Innis Arden Reserve to find and establish connections by negotiating public access easements on these properties.
- Seek public access opportunity on privately owned Boeing Creek Reserve.

**Picnic Facilities LOS:** The current level of service is not adequate.

Picnic Facilities Strategy:

- Picnic facilities are a key neighborhood park amenity. Focus on improving picnic facilities level of service will improve neighborhood park level of service. These efforts should be coordinated.
- Several potential picnic areas were identified for review of current facilities and potential for the addition of additional picnic areas.
- Review parks for number of tables and viability of picnic table clusters in the following parks. Hamlin Park, Boeing Creek Park (near 175th), Hillwood Park, Twin Ponds Park, Cromwell Park (Cromwell to be addressed in '04 master Plan) Ridgecrest Park, and Richmond Highlands Park.
- General design of picnic facilities should include placement of picnic tables near playgrounds
- Add limited number of picnic tables to North City Park and Paramount Open Space
- Evaluate Interurban Trail corridor for additional picnic opportunities at Darnell Park and Echo Lake Park

### **Sport Courts**

Tennis Court LOS: The current level of service meets standard for quality and distribution. The current level of service standard for quantity is somewhat deficient. Night time capacity is needed.

**Tennis Court Strategy:**

- Focus on maintaining existing courts
- Add capacity by lighting courts at Shoreline Park

**Basketball Courts LOS:** The current level of service is not adequate in terms of quantity, distribution or quality in City facilities.

**Basketball Courts Strategy:**

- Work with Shoreline School District to add regulation height basketball standards to paved courts at school sites
- Consider adding four courts at Hamlin Park if master planned, and Aldercrest Annex school site if redeveloped.

**Other Courts LOS:** The current level of service is not adequate. There are no outdoor pickle ball or volleyball or in-line hockey courts provided by the City.

**Other Courts Strategy:**

- Consider adding multipurpose sport courts to system.

**Soccer Fields LOS:**

Soccer Field Conditions LOS: The current level of service is not adequate, does not meet industry standards and needs to be addressed

**Soccer Fields Conditions Strategies:**

- Upgrade existing all-weather soccer fields facilities with new synthetic grass to increase capacity.
- Upgrade Shoreline Park (2 fields) and Twin Ponds Park (1 field) first.
- Then, upgrade Shoreview Park all-weather field.

**Soccer Fields Quantity Strategies:**

- Department should assess current demand, usage, and scheduling procedures to evaluate the soccer field quantity level of service prior to the construction of new fields.
- Use of existing fields can be expanded by modifying scheduling and setting up for practice games by buying more goals and setting up practices in different spaces. For example, short fields at Hillwood Park, Shoreview Park softball outfield, Richmond Highlands Park, Paramount School Park, James Keough Park, and Cromwell Park.
- Coordinate with soccer leagues for modified soccer league regulations and schedule fields in alignment with the modified regulations.
- Expand joint scheduling with School District to ensure level of competitive/practice use is matched with facility type and quality.
- General Soccer Field Strategies: Upgrade / redevelop on City land first. Expand use of existing fields by installing artificial "field turf" for year round use
- Upgrade / co-develop on Shoreline School District lands like Aldercrest Annex School site and numerous other sites second
- Buy land and develop for sports fields as third lower priority option

- New field development should focus on developing land that is easiest to develop; Shoreline Community College partnership site is a low priority due to overlap of property with critical areas

### **Ballfields (Softball and Baseball)**

#### Ballfields Quantity Strategies:

- Department should assess current demand, usage, and scheduling procedures to evaluate the ballfield quantity level of service prior to the construction of new fields.

#### General Ballfield Strategies:

- Upgrade / redevelop existing City facilities to increase capacity first
- Upgrade / co-develop on Shoreline School District land like Aldercrest Annex School site and numerous other sites
- Buy land and develop for sports fields as a third lower priority option
- New field development should focus on developing land that is easiest to develop; Shoreline Community College partnership site is a low priority due to overlap of property with critical areas
- Review infrastructure to ensure amenities like bleachers, concession, storage and maintenance are at adequate levels at each ball field complex
- Expand joint scheduling with School District to ensure level of competitive/practice use is matched with facility type and quality

Ballfield Conditions LOS: The current level of service is not adequate, does not meet industry standards and needs to be addressed

#### Ballfield Conditions Strategies:

- Renovate and upgrade fields identified for improvement
- Add or replace amenities and features identified for improvement

Park Name	# of Fields	Good Condition	Need Improvement	Other Field Improvements	Other Improvements Needed
Hamlin Park	6	3	3	3 Fields need bleachers	Add Concession Storage Building
Paramount School Park	2	2	0	NA	
Cromwell Park	1		1	Master Plan 2004	Master Plan 2004
Richmond Highlands Park	2	2		Replace Bleachers	
Shoreview Park	2	2	0	No additions	
Hillwood Park	1	0	1	NA	
Ridgecrest Park	1	0	1	Add bleachers	
<b>TOTAL</b>	<b>15</b>	<b>9</b>	<b>6</b>		

**Water Access Points LOS:** The current level of service is not adequate.

**Puget Sound Access LOS:** The current level of service is not adequate.

Puget Sound Access Strategies:

- Acquire public access through public and private lands to access Puget Sound
- Work with Burlington Northern Railroad to establish safe pedestrian crossings
- Seek public access at the following points:
  - a. Privately owned Boeing Creek Reserve (negotiate public access trail and beach)
  - b. City owned Innis Arden Reserve (negotiate with BNSF to construct culvert under three tracks)
  - c. Richmond Beach Saltwater Park additions of beach frontage on south and north sides of park.
  - d. Add beach frontage between Richmond Beach Saltwater Park and 197<sup>th</sup> King County Metro Pump Station
  - e. Negotiate public access to 197th King County Metro Pump Station property for views and negotiate with BNSF to approve construction of pedestrian overpass at this site or another site to the north
  - f. Add beach frontage between King County Metro Pump Station and Point Wells
  - g. Negotiate public access easements at other access points owned by private property associations along Puget Sound (Salsby by the Sea is an example)
  - h. Point Wells (support Point Wells annexation, establish water access).

**Figure 3: Map of Potential Puget Sound Water Access Points**



Creek and Lake Access LOS: The current level of service is not adequate.

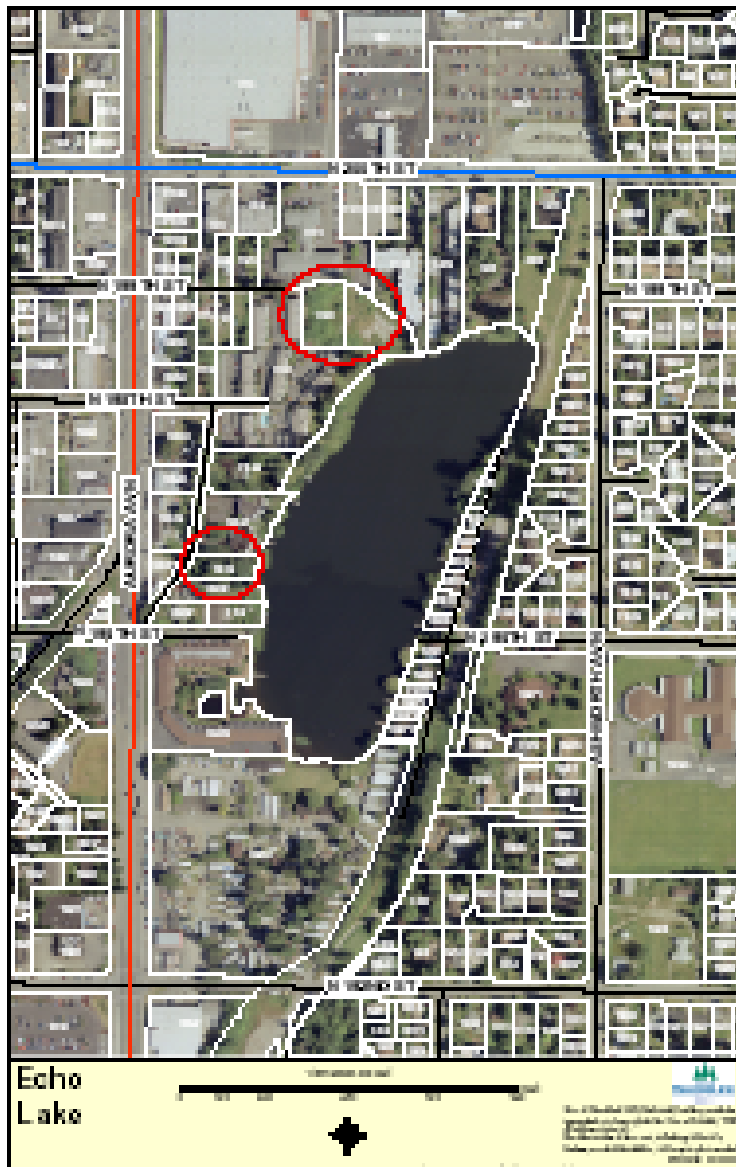
Creek and Lake Access Strategies:

Echo Lake Park / Echo Lake Area :

- Interurban Trail construction in 2004 will enhance view access of lake.
- Acquire additional water accesses to Echo Lake as properties become available.
- Establish walking loop around Echo Lake area.



**Figure 4: Map of Potential Echo Lake Water Access Points**



Shoreview Park - Hidden Lake Area :

- Add viewpoint and sidewalk along NW Innis Arden Way to provide view access.
- Improve Shoreview/Boeing Creek Park trail system to provide access to Hidden Lake

Twin Ponds Park:

- Improve trail system
- Maintain and upgrade existing pond overlooks
- Consider adding pond overlooks

Ronald Bog Park:

- Recognize seasonal wetland limits park improvements
- Consider floating or raised walkway to improve access to water
- Coordinate with Surface Water Management improvements at this park
- Add street side improvements and improve access from Meridian Park School to encourage environmental education opportunities
- Add southern access point from neighborhood

Paramount Open Space Park Area:

- Improve trail access through park and around ponds

McAleer Creek:

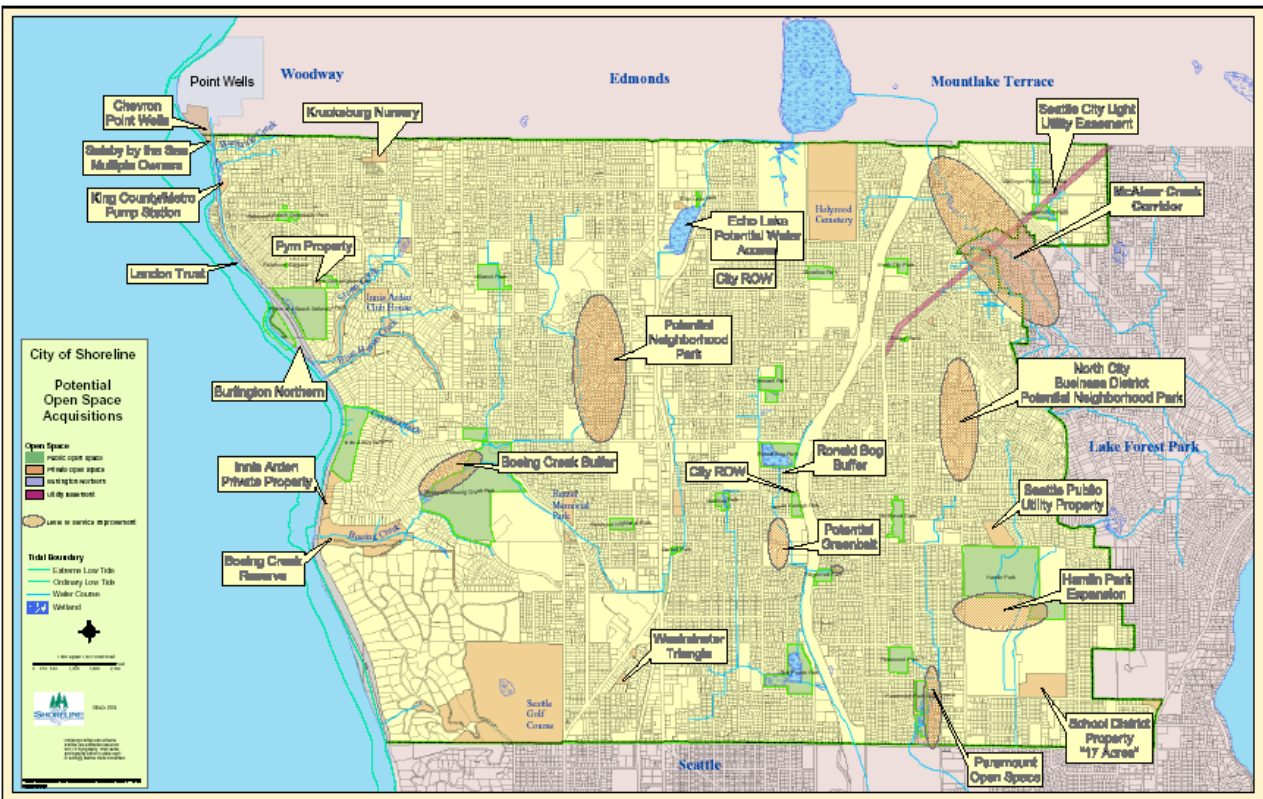
- Encourage and support SWM purchase of properties along McAleer Creek to protect this stream corridor
- Acquire public access to properties along this corridor that is suitable for outdoor recreation and interpretive experiences.

**Natural Open Space Parks LOS:** The current level of service is not adequate.

**Natural Open Space Strategies:**

- Acquire or support acquisition of properties to add to the natural open space system.
- Acquire Seattle Public Utility property located adjacent to Hamlin Park on north boundary of park
- Acquire private property near Paramount Open Space Park including additions on southern and eastern boundaries of park
- Acquire Water District /School District property located on the south boundary of Shorecrest School
- Evaluate unimproved right of way throughout city for potential open space park land e.g. along 160th north of Sears complex, NE 195<sup>th</sup> Street for trail corridor, ROW
- Acquire Fircrest property adjacent to Hamlin Park on south boundary of park for enhanced buffer of maintenance facility and expanded parking for playfields. Encourage and support SWM purchase of McAleer Creek corridor.
- Consider public/private partnership with Kruckeberg Gardens

**Figure 5: Map of Potential Natural Open Space Parks**



**Cultural Facilities LOS:** The current level of service for indoor pools, recreation centers and theaters is not adequate.

**Specialty Facilities**

The current inventory of indoor pools, recreation centers and theaters includes: the Shoreline Pool, Richmond Highlands Recreation Center, Shorecrest Theater with 450 seats, Shorewood Theater with 500 seats, and Shoreline Center Auditorium with 600 seats.

Indoor Pool, Recreation Center and Theater Strategies:

- Plan to replace Shoreline Pool within 20 year planning horizon
- Plan and construct an east side recreation center similar to Richmond Highlands Recreation Center.
- Partner with Shoreline School District to jointly master plan the Shoreline Center complex site to include new indoor pool, enhanced parking and potential indoor theater (250 seat) and other site improvements like directional signing, etc.
- Partner with Shoreline School District to jointly plan park and indoor and outdoor recreation facilities at Aldercrest Annex; This is another potential site for the 250 seat theater.

Other Specialty Facilities Strategies:

- Specialty facilities that are highly specialized and/or serve a small segment of the population are generally a low priority
- Specialty facilities that are highly specialized and /or serve a small segment of the population should be developed only if suitable property is available and the City can find viable partners to develop, operate and maintain the facilities.

**Skate Park Facilities LOS:** The current level of service is not adequate.

Skate Park Strategies:

- Add portable skate park at Hillwood Park/Einstein Middle School.
- Add skate park amenities at various park sites.

**Community Park LOS:** The current level of service is not adequate.

Community Park Strategy:

- Partner with Shoreline School District to jointly plan indoor and outdoor recreation facilities at Aldercrest Annex and coordinate connections with Ballinger Open Space and Brugger's Bog Park areas

**Regional, Large Urban Parks LOS:** The current level of service is adequate.