

CITY COUNCIL AGENDA ITEM
CITY OF SHORELINE, WASHINGTON

AGENDA TITLE:	Off-Leash Dog Area Pilot Sites Approval
DEPARTMENT:	Parks, Recreation and Cultural Services (PRCS)
PRESENTED BY:	Dick Deal, Director PRCS Maureen Colaizzi, Parks Project Coordinator

PROBLEM/ISSUE STATEMENT:

This staff report requests Council approval to locate two pilot Off-Leash Dog Areas: approximately 1.2 acres at the south beach area in Richmond Beach Saltwater Park and the approximately 2.5 acre parking lot in the eastern portion of Shoreview Park closest to the Shoreline Community College (SCC).

Recommended for approval by the Parks, Recreation & Cultural Services (PRCS) Board on October 23, 2008, these pilot sites were further reviewed by City Council at their January 20th study session. PRCS Board recommended approval of two off-Leash dog area pilot sites to be designed and built in 2009 per the Capital Improvement Program (CIP). A one-year monitoring program will provide ongoing evaluation for the PRCS Board to determine if these sites are viable for long term use. These improvements will be funded by the voter supported Parks, Trails and Open Space Bond. This project supports the completion of Council Goal #4: Complete the projects of the 2006 Parks and Open Space Bond.

Similar to the many other recreational activities that are offered in Shoreline's parks and open spaces, the PRCS Board supports the development of an Off-Leash Dog Area Program that establishes a system of off-leash areas that provide a safe place for community members to recreate with their dogs as they exercise, play and socialize off-leash. King County Animal Control estimates that there are over 12,000 dogs owned by Shoreline residents.

In 2005, an interested group of Shoreline dog owners, ShoreDog, approached the PRCS Board about locating an area for off-leash dogs in Shoreline. The PRCS Board developed a subcommittee to recommend a suitable site. A community survey indicated that citizens felt an off-leash area was a need for the City. The PRCS Board recommended to the City Council that funds for an off-leash dog area be included in the Open Space, Parks & Trail Bond Issue. With approval of the Bond by voters in May 2006, the City has \$150,000 for the development of off-leash dog areas in Shoreline. In November 2006, the PRCS Board recommended that a more comprehensive study be done. In 2007, the PRCS Board formed another subcommittee, known as the Off-Leash Dog Area (OLDA) Study Group, to identify promising pilot sites in the City. The OLDA Study Group included eight community volunteers and two PRCS Board members. Their goal was to identify locations that are distributed throughout Shoreline,

providing a system that serves the community with off-leash dog areas. This report requests the approval for these two pilot sites within Shoreview Park and Richmond Beach Saltwater Park. See Attachment A, Pilot Sites for Approval.

Richmond Beach Saltwater Park

The approximate 1.2-acre beach area south of the pedestrian bridge which currently receives un-authorized off-leash use is being considered for an unfenced, seasonal timed-use site (November-April) to avoid peak warm weather times. There are dog parks in the Puget Sound region that are located on waterways including Puget Sound, Lake Washington and the Sammamish River. The south beach area is one of the few sites in Shoreline that offers water access. The site is bordered by Burlington Northern Santa Fe (BNSF) property to the east and south and Puget Sound to the west.

Shoreview Park

This approximate 2.5-acre parking lot is located adjacent to Shoreline Community College (SCC) in Shoreview Park and was unofficially used as student parking until September 2007. Now the site is readily available for use as a pilot off-leash dog area. The site has two entry points with walk-in access from the lower Shoreview parking lot and vehicle access through SCC property. The site would be easily modified for off-leash use and is recommended as a traditional off-leash area. Staff has discussed gaining vehicular access through the SCC campus with SCC Staff. Approval for vehicle access is pending.

Off Leash Ordinance

The City will need to amend its Leash Law to allow dogs at designated off-leash areas including the beach. This will be presented to the Council at a later date prior to the opening of the off-leash sites.

FINANCIAL IMPACT:

- The 2006 Parks and Open Space Bond will fund \$150,000 to locate, design and construct the off-leash dog areas.

RECOMMENDATION

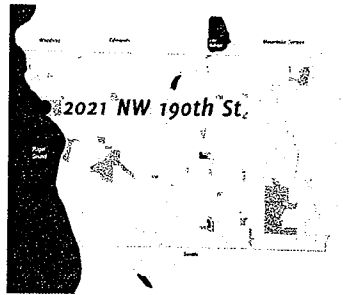
Approve the location of the identified pilot sites within Shoreview and Richmond Beach Saltwater Park. Staff will present the ordinance changes to Council prior to the opening of the pilot off-leash sites.

Approved By: City Manager  City Attorney ____

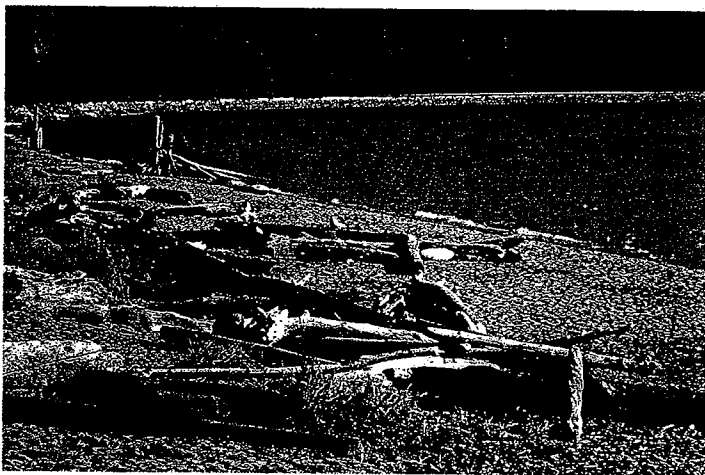
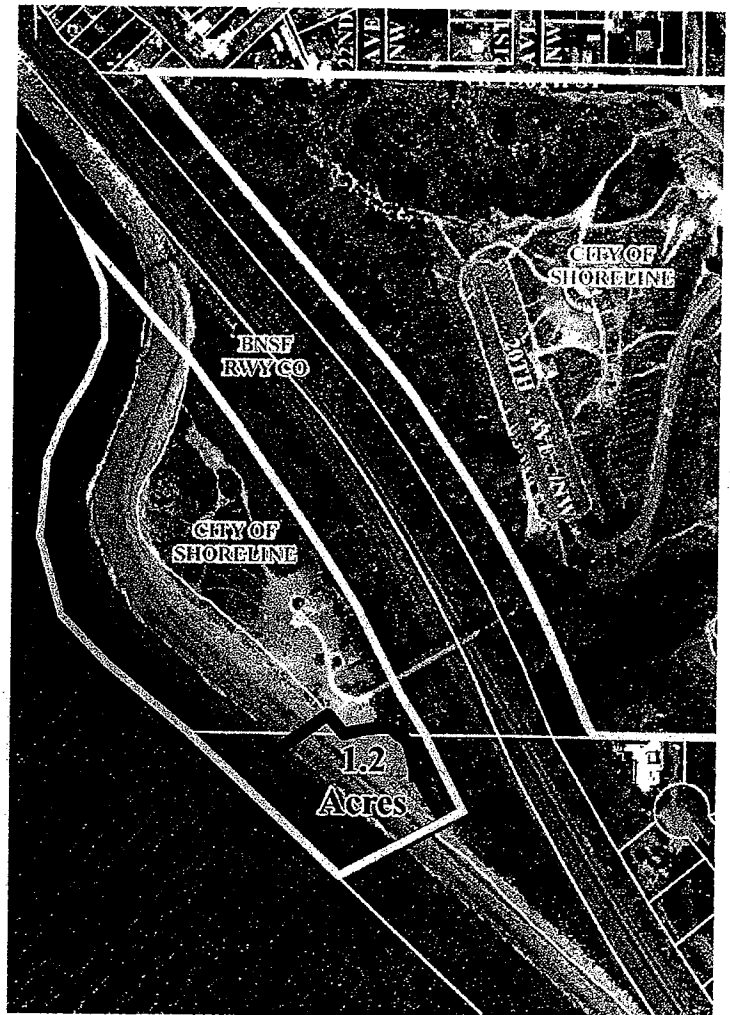
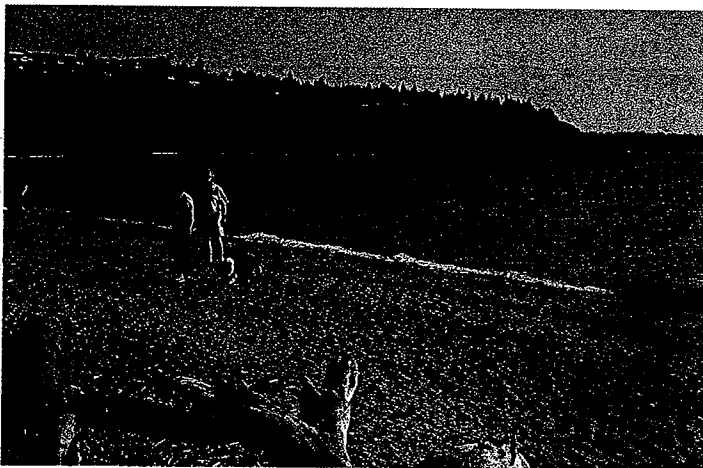
"First Step" Pilot Site Recommended for Implementation

Saltwater Park

1.2 acres owned by
City of Shoreline,
serving Northwest
Shoreline



Sandy beach with water access
Rest room nearby
Contained by water & BNSF fence



Larger park experience allowing for multiple activities (eg: Marymoor Park)

Only water access site that meets criteria

Sand—the most durable surface for off-leash dogs

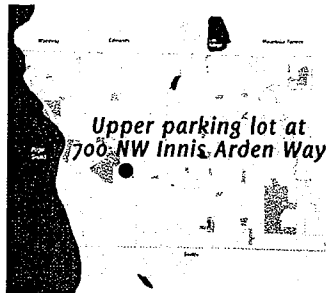
Well suited for off-peak winter use (timed-use)

Parking nearby

"First Step" Pilot Site Recommended for Implementation

Shoreview Park

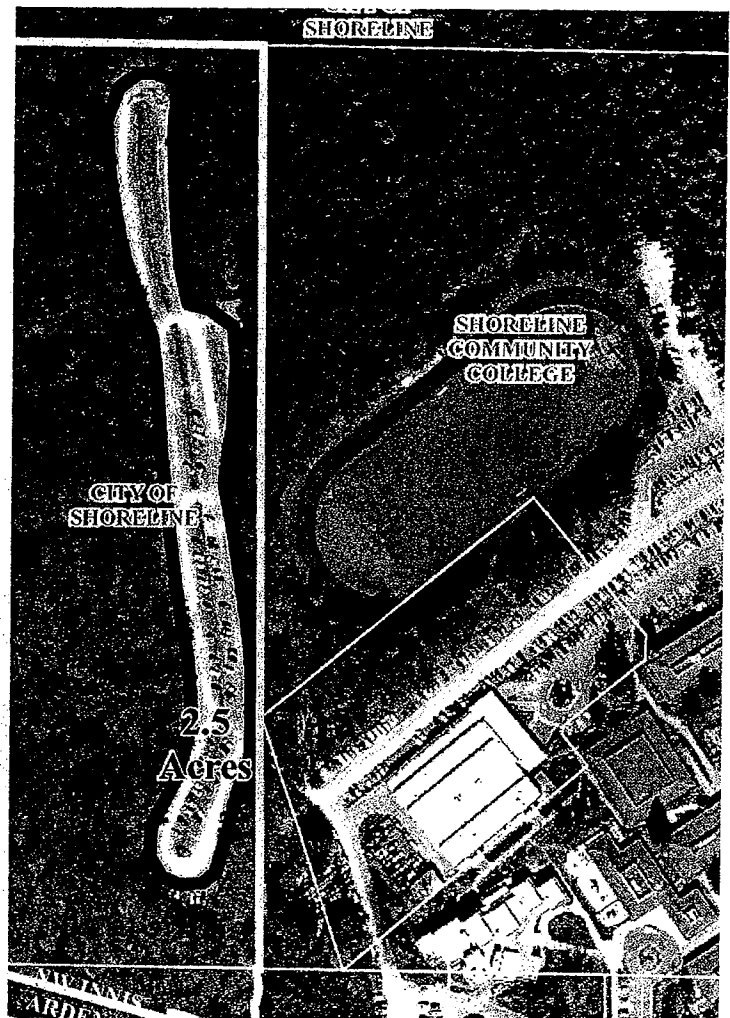
2.5 acres owned by
City of Shoreline,
serving Southwest
Shoreline



Flat parking lot

Easily modified for off-leash use

2 entry points: lower parking lot & SCC



Would transform parking lot back into public park use

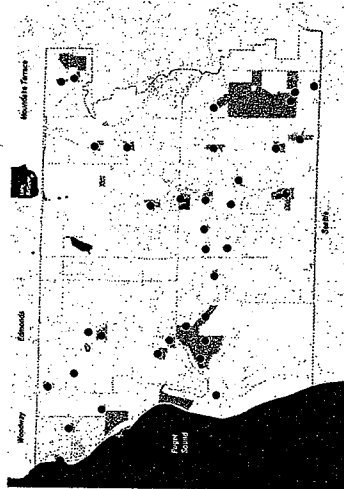
Good access from lower Shoreview parking lot

Good access through SCC during summer & weekends

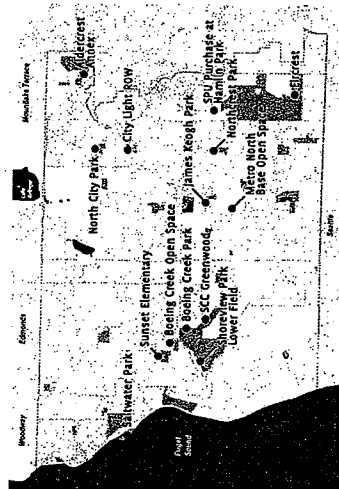
Best suited for traditional off-leash area

Site Screening & Evaluation Criteria

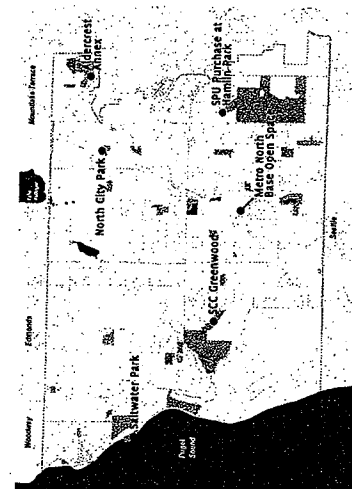
From 38 Potential to the Two Recommended "First Step" Pilot Sites



38 POTENTIAL SITES —
to which siting criteria were applied

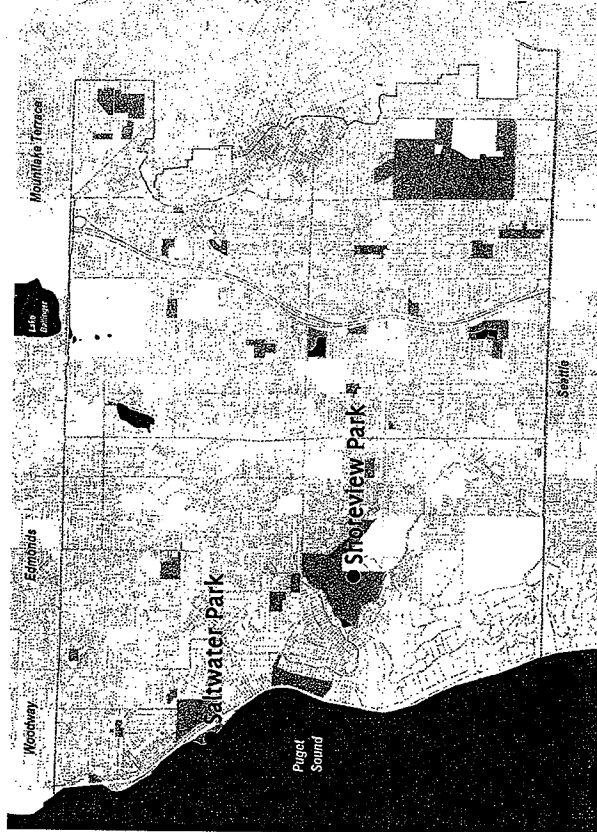


14 PROMISING SITES —
which met all criteria



6 MOST PROMISING SITES —
well distributed to form a system

Two Recommended Pilot Sites — Saltwater Park—South Beach & Shoreview Park



Readily available for
off-leash use

Opportunity for
traditional and timed-
use implementation

Site Evaluation Criteria *abbreviated & in no particular order...*

- less used by others
- potential for enclosure by natural or manmade boundaries
- ability to control storm water runoff
- potential for buffer zones between off-leash areas and other active park uses
- absence of hazards
- provides an area for people with limited mobility
- avoids impacts to Environmentally Critical Areas
- provides some parking

Shoreline Off-Leash Dog Area Study Group Accomplishments

SPRING 2007

- ✓ Stepped up enforcement of leash laws — first with warnings, then with tickets
- ✓ Received 26 OLDA Study Group applications
- ✓ Shoreline Park Board selected 11 citizens to serve with three Park Board members and one staff member

SUMMER 2007 — MET 2 TIMES

- ✓ Held first OLDA Study Group meeting — introduced process and past work
- ✓ Established baseline data on licensed dog population
- ✓ Visited existing OLDA sites in the region
- ✓ Visited potential sites in Shoreline parks and open spaces
- ✓ Discussed approach with Park Board

FALL 2007 — MET 5 TIMES

- ✓ Published article in Currents
- ✓ Reviewed “Best Practices” for OLDAs across the country and beyond
- ✓ Drafted Off-Leash Dog Area Program Guidelines — established mission, approach, schedule, criteria, rules and outreach strategy
- ✓ Gained approval of approach from Park Board
- ✓ Gained approval of draft Off-Leash Dog Area Program Guidelines from Park Board

WINTER 2008 — MET 6 TIMES

- ✓ Compiled inventory of available open spaces in Shoreline with potential for OLDA

- ✓ Established relationship with Shore Dogs and cultivated their role as stewards of future OLDAs
- ✓ Established criteria for potential pilot sites
- ✓ Completed review of site inventory — narrowed 38 potential sites down to 14

SPRING 2008 — MET 4 TIMES

- ✓ Identified 6 most promising pilot sites for initial implementation
- ✓ Hosted public meeting on June 14, 2008
- ✓ Conducted SEPA environmental review on 6 most promising pilot sites

SUMMER 2008

- ✓ Collected public comment

FALL 2008 — MET 4 TIMES

- ✓ Present findings and recommendations to community groups
- ✓ Brought implementation plan to Park Board for approval
- ✓ Hosting public meeting on October 29, 2008

WINTER 2009

- ☐ Will bring implementation plan to City Council for adoption
- ☐ Will develop design for selected pilot sites

2009

- ☐ Will construct and open pilot sites for public use
- ☐ Will monitor pilot sites