

CITY COUNCIL AGENDA ITEM
CITY OF SHORELINE, WASHINGTON

AGENDA TITLE: Gateway Master Plan
DEPARTMENT: Planning and Development Services
PRESENTED BY: Tim Stewart, Director
Kirk McKinley, Planning Manager
Andrea L. Spencer, Planner

PROBLEM/ISSUE STATEMENT

Council adopted a goal number five for 2002 is to enhance community identity through the creation of a Gateway Master Plan. This issue was last discussed with Council on October 15, 2001. During this meeting Council reviewed the draft project outline and provided staff with direction to proceed with the project.

On March 15, 2002 seven submissions were received in response to the City's request for proposals for the master plan. After a staff committee review, KPG Architecture, Landscape Architecture and Civil Engineering firm, was selected to help implement the gateways goal.

The purpose of this workshop is to brief Council, and get early feedback prior to community outreach for the gateway plan. Staff has worked with KPG to develop a project timeline (Attachment A) and a classification structure for each of the gateways (Attachment B). During the workshop we will give an overview of the information contained within these attachments, and KPG will present images of each potential gateway site. We will also use the workshop to offer early design theme ideas for Council feedback.

FINANCIAL IMPACT

Council has allotted \$50,000 in the 2002 budget for the creation of the Gateway master plan. A contract in the amount of \$48,927 has been executed with KPG to perform this work.

RECOMMENDATION

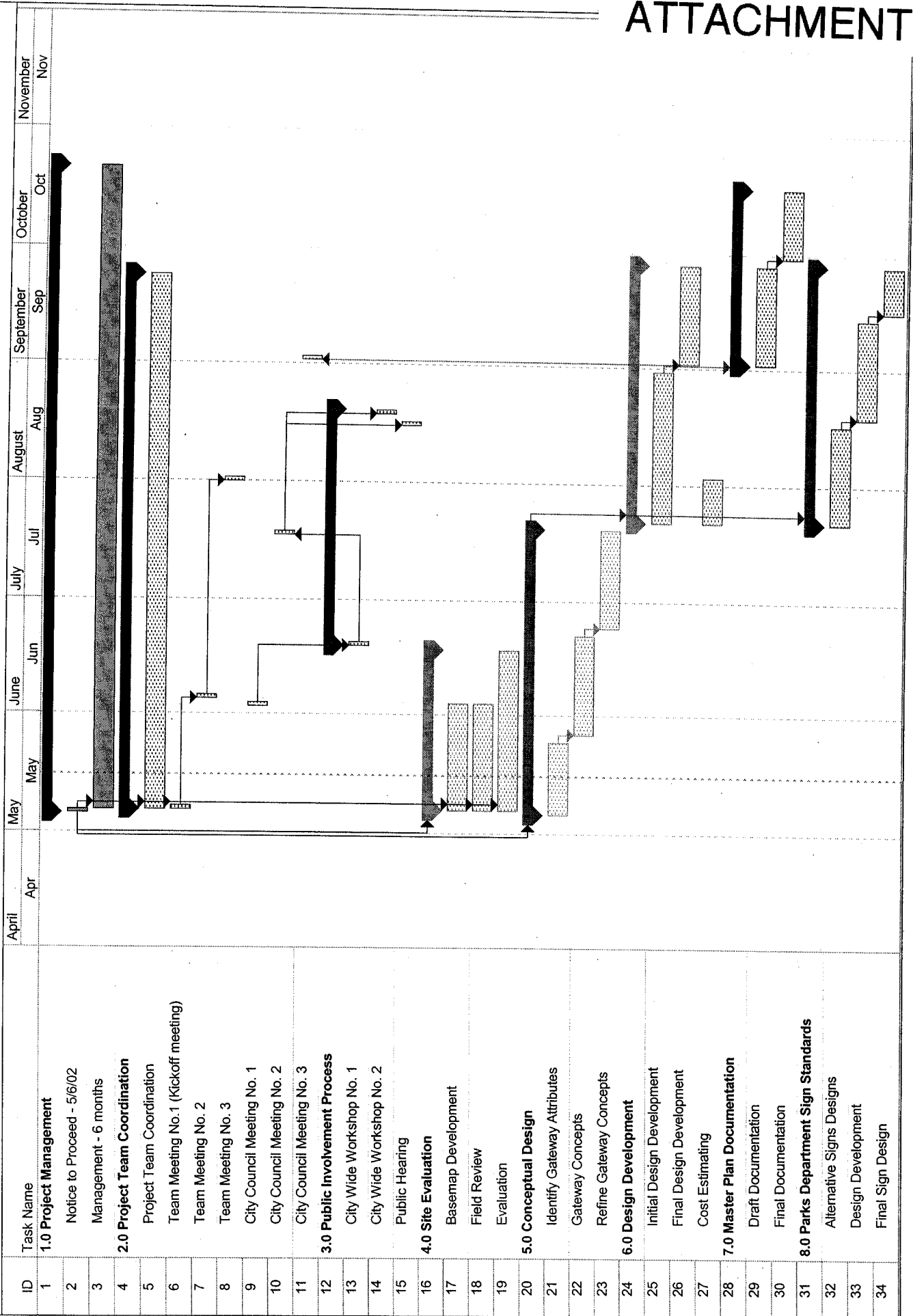
No action is required at this time. This information is presented to brief Council on the current status of the Gateway Master Plan, and is intended to spark discussion on possible Gateway themes.

ATTACHMENTS

Attachment A: Gateways Master Plan Project Schedule
Attachment B: Gateways Master Plan List

Approved By: City Manager  City Attorney *N/A*

City of Shoreline - Gateways Master Plan Project Schedule - 2002



**City of Shoreline
Gateways Master Plan
Gateway List**

Gateway Type*	City Boundary	Location	WSDOT Coordination	Issues
C	North	1st Ave. NE and NW 205th St.	SR 104	Existing Mural
C/P	South	Westminster Way N @ Dayton Ave. N	SR 523	Twyman Property
C/P	City Center	Interstate 5 @ N 175th St. (southbound exit)	I-5	
C/P	City Center	Interstate 5 @ N 175th St. (northbound exit)	I-5	
P	South	Interstate 5 @ 5 th /145th	I-5	
P	North	Aurora Ave. N and NW 205 th St.	SR 99	
P	South	Interurban Trail @ N 145 th St.	SR 523	Interurban Trail
P	North	Meridian @ N 205th St.(Interurban Trail)	SR 104	Interurban Trail
P/D	South	15 th Ave. NE and N 145 th St.	SR 523	
D	South	Aurora Ave. N and 145 th St.		West Corner Only
D	South	Bothel Way NE and NE 145th St.	SR 523	NE Corner Only
D	North	15th Ave. NE and NW 205th St.	SR 104	
I	North	Interstate 5 @ 205th	I-5/SR 104	
I	North	205 th @ SR 104 (by Scott's Restaurant)	SR 104	Center of Roadway
I	North	Interstate 5 southbound @ 195th pedestrian bridge	I-5	Freeway signage
S	South	25th Ave. NE and NE 145th St.	SR 523	
S	South	Meridian Ave. N and N 145th St.	SR 523	
S	North	8 th Ave. NW and NW 205 th St.	SR 104	
S	North	3 rd Ave. NW and NW 205 th St.	SR 104	
S	North	Fremont Ave NW and NW 205 th St.	SR 104	
S	North	5th Ave. NE and NW 205th St.	SR 104	
S	East	NE Perkins Way @ City Limits	SR 104	
S	East	24th Ave. NE @ City Limits	SR 104	
S/C	North	20 th Ave. NW and NW 205 th St.	SR 104	

Total number of Gateways

24

***Gateway Type Legend**

- C CIP (30% design drawings)
- P Piggyback on other City Projects (30% design drawings)
- I Interjurisdictional (15% design drawings)
- D Private Development (design guidelines)
- S Signage (develop standard signage for use at city facilities and minor entrances)

This page intentionally left blank.