

**CITY COUNCIL AGENDA ITEM**  
CITY OF SHORELINE, WASHINGTON

<b>AGENDA TITLE:</b> Interurban Trail – North Central Segment – 30% Design Review
<b>DEPARTMENT:</b> Public Works
<b>PRESENTED BY:</b> Kirk McKinley, Aurora and Interurban Project Manager Dave Buchan, Capital Projects Manager

**PROBLEM/ISSUE STATEMENT:**

The purpose of this agenda item is to brief the Council on background issues, development issues and proposed alignment for the North Central segment of the Interurban Trail.

**BACKGROUND:**

Policy T-39 of the Comprehensive Plan states: "Aggressively pursue construction of the Interurban Trail." Council Goal #1 states: "Work toward completing the Aurora Corridor and Interurban Trail projects." Two major segments of the Interurban Trail are already completed and two are currently in construction. The North Central segment is currently in design and with Council approval is slated to begin construction in February 2006.

The North Central segment of the Trail spans from North 175<sup>th</sup> Street to North 192<sup>nd</sup> Street. This staff report summarizes activities over the past months to develop design proposals for the North Central segment of the Trail and to work with affected businesses and developers in creating a Trail alignment that meets the needs of the City while respecting the private property issues of individual businesses along the corridor.

Preliminary design concepts for the North Central segment of the Trail were initially reviewed at a public open house on September 26, 2000. Four alignment options, labeled "A" through "D", were presented at the open house. Following this review the Council directed staff to pursue further design activity for an option "E" that would offer an alignment that travels along the Seattle City Light right-of-way. The Council went on to indicate that it views the North Central segment of the Trail as a more visible space, taking on a more urban design character in its amenities and finishes (In many ways this segment of the Trail could be viewed as the heart of the City of Shoreline). The North Central provides an opportunity to create a very visible space in our City and create a source of pride for our citizens. This will be the Council's first opportunity to review design concepts for the North Central segment and to gain a better understanding of the issues involved with Trail development. Drawings presented at the workshop discussing this agenda item will be at the 30% design phase.

**TRAIL ALIGNMENT:**

For the most part the Trail is routed within the Seattle City Light transmission line right-of-way east of Aurora Avenue. This 100' wide corridor will be developed to include the Trail, well-landscaped spaces and hard-surfaced areas to create a strong, identifiable public space. Opportunities for special lighting, artworks and festive gathering places will exist along the route of the Trail.

The 30% drawings will show an alternative alignment of the North Central Trail between North 185<sup>th</sup> Street and North 192<sup>nd</sup> Street from what had been previously shown. From the southeast corner of the North 185<sup>th</sup> Street and Aurora intersection, the recommended routing now proceeds eastward on the south side of North 185<sup>th</sup> Street to the North 185<sup>th</sup> Street and Midvale Avenue North intersection. The Trail then crosses North 185<sup>th</sup> and proceeds northbound on the west side of Midvale Avenue North, continuing on the east side of both Dunn Lumber and Sky Nursery properties and connecting up with the existing Trail at North 192<sup>nd</sup> Street. This routing is recommended over the route on the west side of Dunn Lumber and Sky Nursery because it provides a safer crossing of North 185<sup>th</sup> and avoids the potentially serious vehicle/pedestrian conflicts at the Aurora Avenue North entry to Sky Nursery.

**COORDINATION WITH BUSINESSES AND PROPERTY OWNERS:**

Staff has spent considerable effort coordinating the North Central Trail plan with affected businesses and property owners along the route of the Trail. Sky Nursery and Dunn Lumber were brought into discussions early in the design process regarding possible impacts to their businesses. These have been productive and fruitful discussions. Both the Gateway Plaza and Walgreens Pharmacy developers had previously submitted development proposals for City review. This afforded staff an opportunity to coordinate Trail design proposals with on-going plan review of these development proposals.

**NOTICE TO TENANTS WITHIN SEATTLE CITY LIGHT RIGHT-OF-WAY:**

The City of Shoreline has asked Seattle City Light to send formal notices to tenants/owners operating businesses within the Seattle City Light right-of-way from North 175<sup>th</sup> Street to North 192<sup>nd</sup> Street. These notices will be sent out February 8, 2005. This formal notice will initiate a one-year notification period for these tenants/businesses to remove their buildings and facilities from the City Light property. Construction on the North Central Trail will begin following the end of the one-year notice.

**COST ESTIMATE:**

The total budget in the 2005 Capital Improvements Budget for the North Central Interurban Trail project is \$2.43 million. Of that amount, \$1,215,000 will be available from the State Interagency Committee for Outdoor Recreation in July of 2005. City of Shoreline funds in the amount of \$486,000 have already been appropriated to the North Central project. King County has committed \$129,000 to the Trail development utilizing the County's Real Estate Excise Tax funding. Although the CIP indicates \$2.43 million in future grants, we do not currently expect or need that amount to proceed toward construction. The IAC and County grants of \$1,344,000 combined with the private development contribution should be sufficient.

The full length of the North Central segment of the Trail is approximately 4,500 lineal feet. Of that length, private developers will build roughly 2,300 lineal feet of the Trail as a condition of their building permits (Sky Nursery, Gateway Plaza, Walgreens). The value of these private contributions is estimated at between \$500-700,000. With the currently allocated and projected funding for the North Central project, we are confident that the North Central project can be completed by October of 2006.

**NEXT STEPS:**

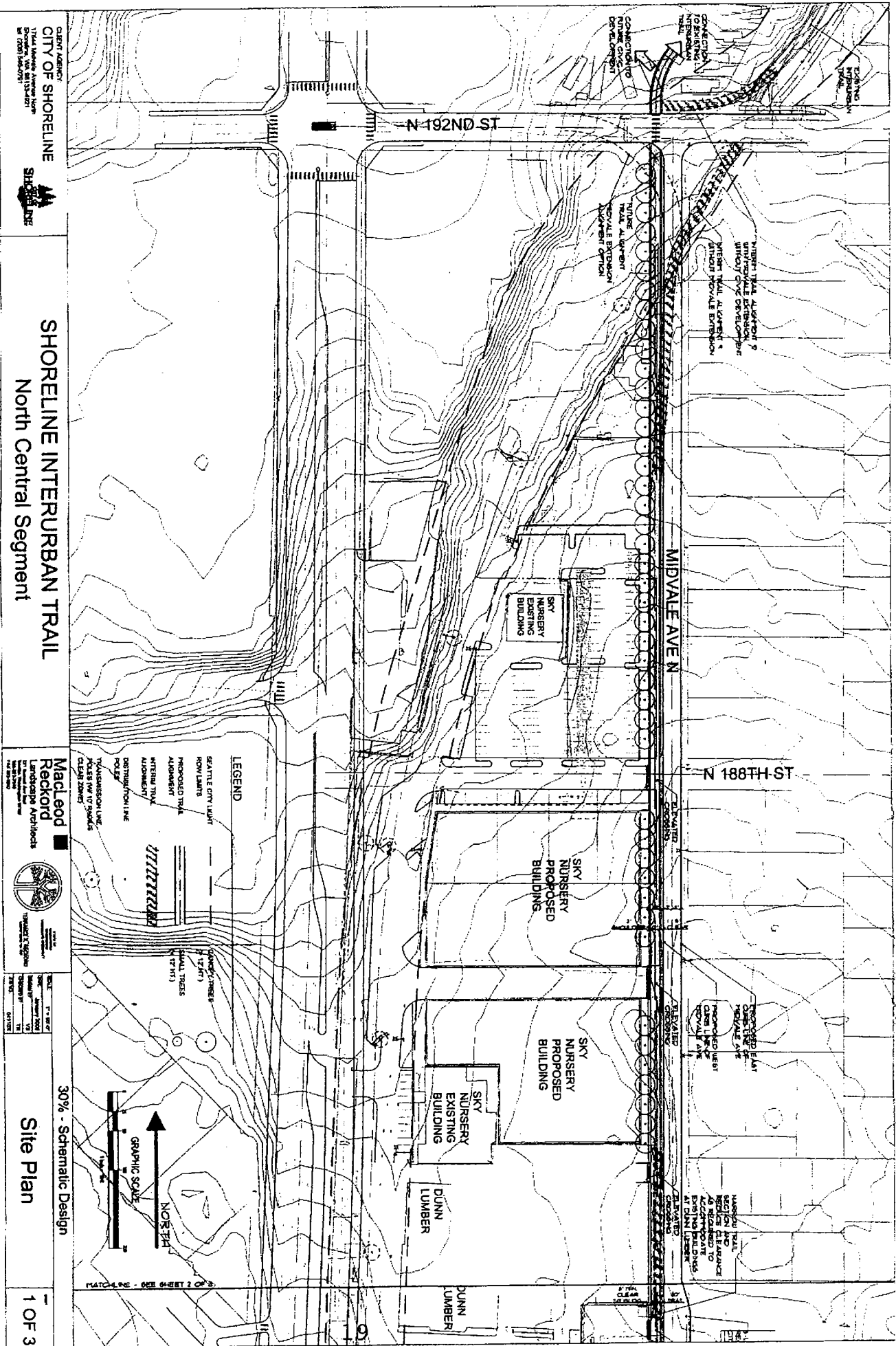
- A public open house is scheduled for Thursday, February 10, 2005.
- On February 8, 2005 the City of Shoreline will request that Seattle City Light send out Permit Termination letters to City Light tenants within the City Light right-of-way from North 175<sup>th</sup> to North 183<sup>rd</sup>. This will begin a one-year notification period for tenants within the Seattle City Light right-of-way.
- Design work will continue on the North Central segment with the next Council briefing scheduled for April 18, 2005. Options for Trail features and amenities will be reviewed at that time.

**RECOMMENDATION**

There is no recommended action at this time.

Approved By:      City Manager  City Attorney NIA

**This page intentionally left blank.**



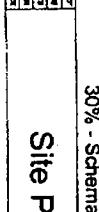
CLIENT AGENCY  
**CITY OF SHORELINE**  
 17144 Midvale Avenue North  
 Shoreline, WA 98148-2427  
 206.473.5800  
 www.shoreline.wa.gov



# SHORELINE INTERURBAN TRAIL

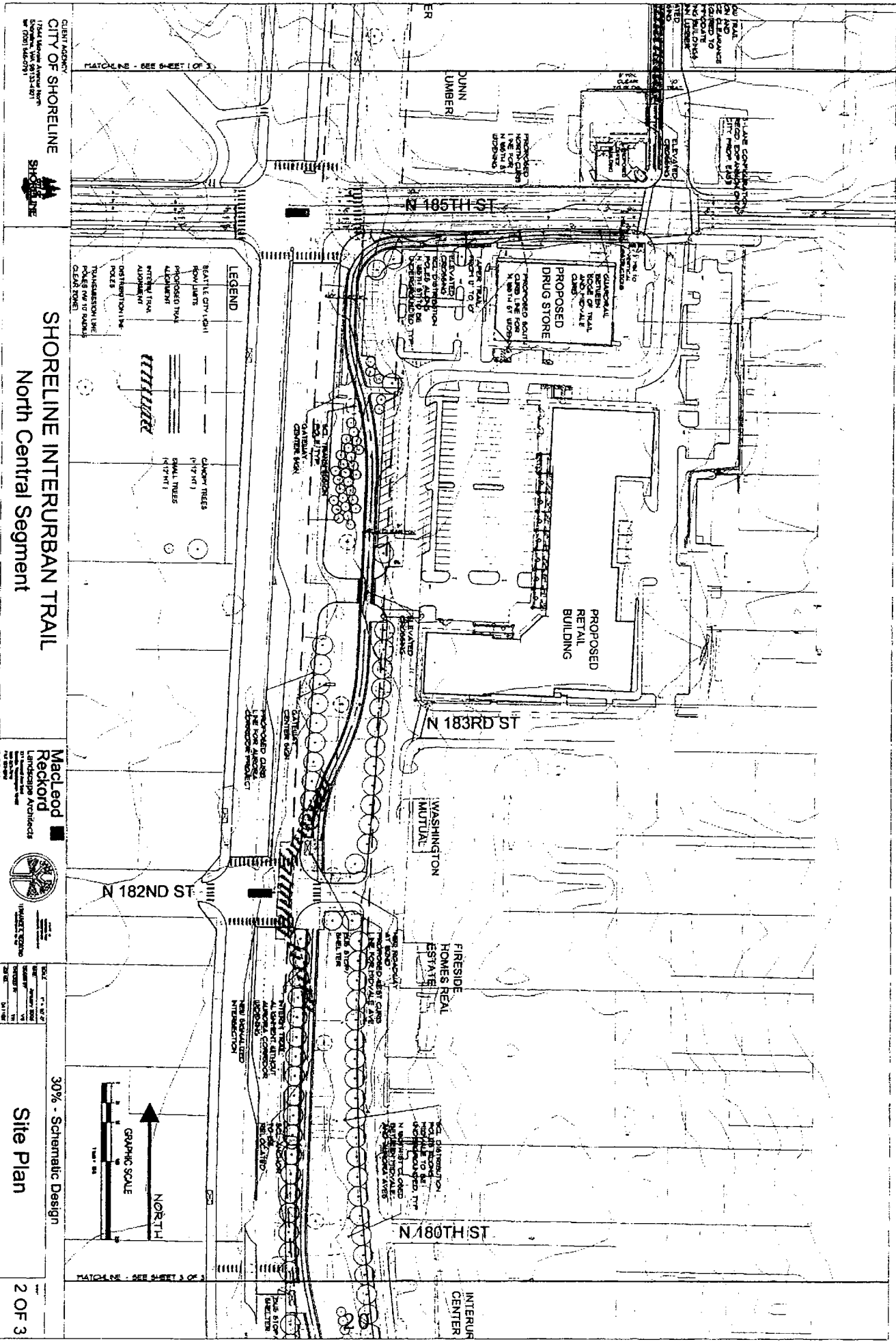
## North Central Segment

PROJECT  
**MacLeod**  
**Reckord**  
 Landscape Architects  
 17144 Midvale Avenue North  
 Shoreline, WA 98148-2427  
 206.473.5800  
 www.macleodreckord.com



DATE: 7.18.22  
 DRAWN BY: [Signature]  
 CHECKED BY: [Signature]  
 PROJECT NO: 22-0001  
 SHEET NO: 1 OF 3

30% - Schematic Design  
**Site Plan**  
 1 OF 3



CLIENT AGENCY  
**CITY OF SHORELINE**  
 17440 Shoreline Avenue North  
 Shoreline, WA 98153-4071  
 (206) 363-0333



**SHORELINE INTERURBAN TRAIL**  
 North Central Segment

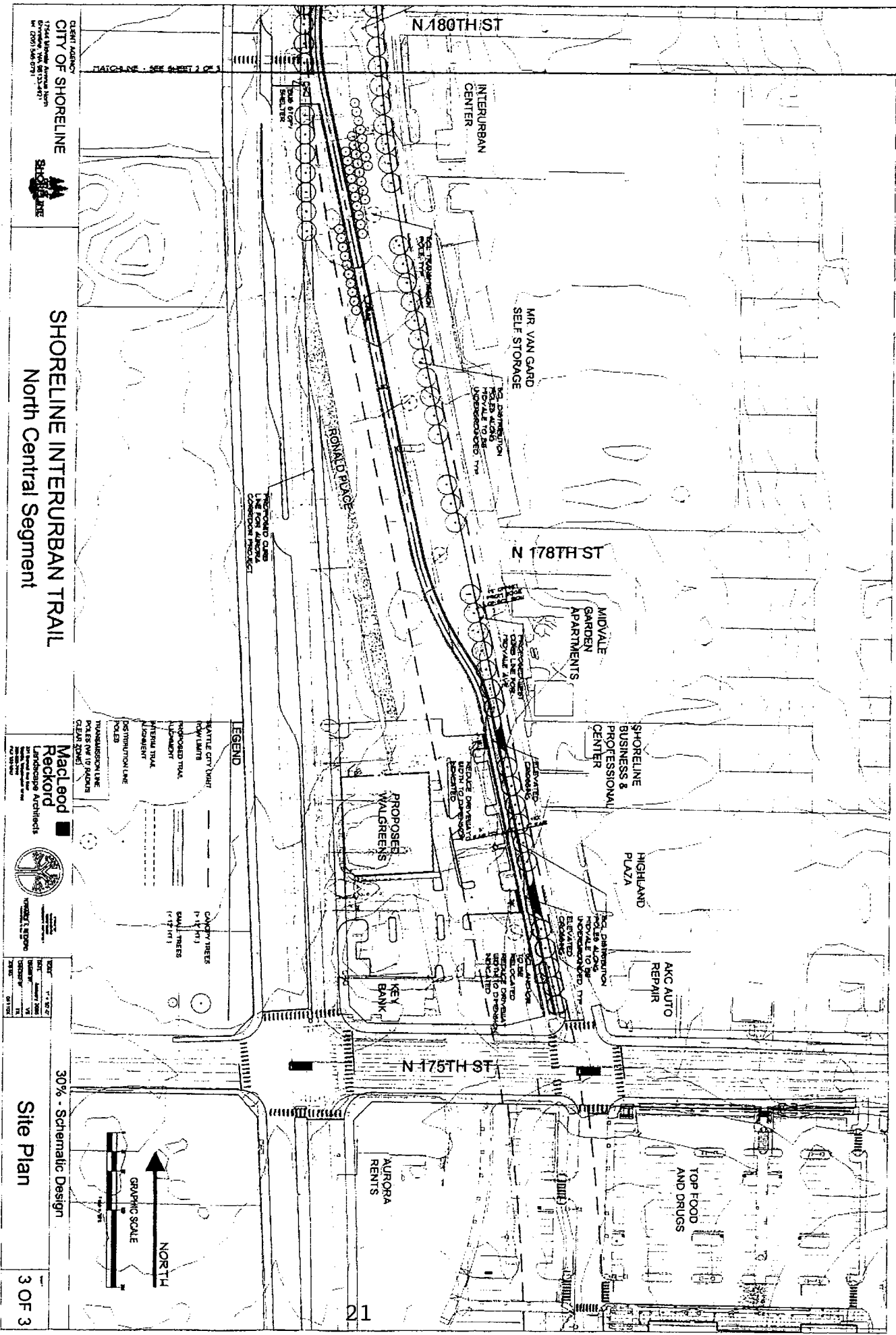
**Macleod**  
**Reckord**  
 Landscape Architects  
 10000 1st Avenue, Suite 200  
 Shoreline, WA 98153-4071  
 (206) 363-0333



UNIVERSITY OF WASHINGTON  
 SCHOOL OF ARCHITECTURE  
 1959 University Avenue  
 Seattle, WA 98195  
 (206) 542-3300

DATE	11.11.17
BY	MM
REVISION	1
DATE	11.11.17

30% - Schematic Design  
**Site Plan**



CITY ADDRESS:  
**CITY OF SHORELINE**  
 17344 Aurora Avenue North  
 Shoreline, WA 98148  
 Tel: (206) 344-0771



# SHORELINE INTERURBAN TRAIL

## North Central Segment

**MacLeod**  
**Reckord**  
 Landscape Architects



NOV 11, 2010  
 17344 Aurora Avenue North  
 Shoreline, WA 98148

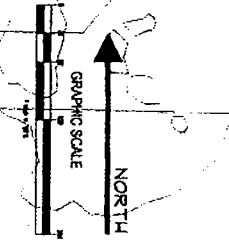
DATE:	11.09.10
BY:	MacLeod
CHECKED BY:	Reckord
SCALE:	AS SHOWN
PROJECT NO.:	11111

30% - Schematic Design

### Site Plan

**LEGEND**

WATTLE CITY ORBIT	CAMPY TREES
ROW LIGHTS	P (1' x 1')
PROPOSED TRAIL	SMALL TREES
ALTERNATE TRAIL ALIGNMENT	(1' x 1')
TRANSMISSION LINE	POLE (W/ 10' BUFFER CLEAR ZONE)
RESTRICTION LINE	POLE



**This page intentionally left blank.**