

Saltwater Park

1.2 acres owned by
City of Shoreline,
serving Northwest
Shoreline



Sandy beach with water access
Rest room nearby
Contained by water & BNSF fence



Larger park experience allowing for multiple activities (eg: Marymoor Park)

Only water access site that meets criteria

Sand—the most durable surface for off-leash dogs

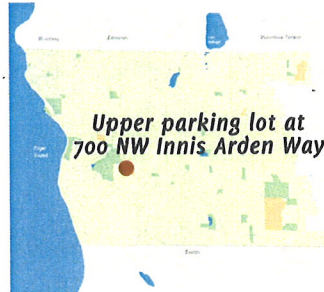
Well suited for off-peak winter use (timed-use)

Parking nearby

"First Step" Pilot Site Recommended for Implementation

Shoreview Park

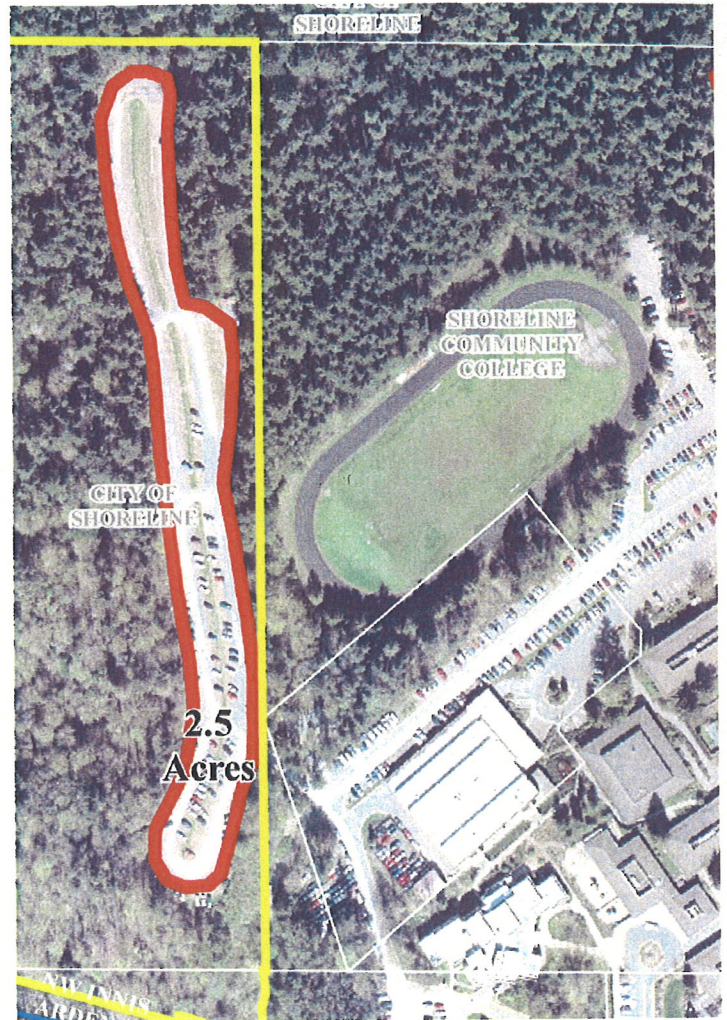
2.5 acres owned by
City of Shoreline,
serving Southwest
Shoreline



Flat parking lot

Easily modified for off-leash use

2 entry points: lower parking lot & SCC



Would transform parking lot back into public park use

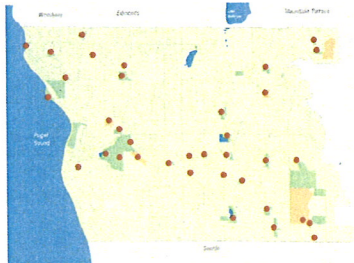
Good access from lower Shoreview parking lot

Good access through SCC during summer & weekends

Best suited for traditional off-leash area

Site Screening & Evaluation Criteria

From 38 Potential to the Two Recommended "First Step" Pilot Sites



38 POTENTIAL SITES —
to which siting criteria were applied

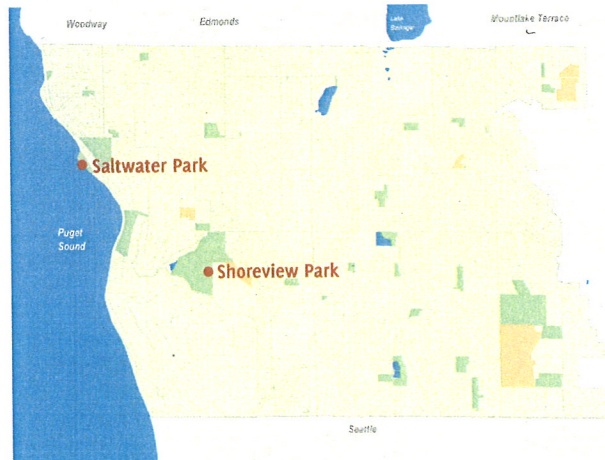


14 PROMISING SITES —
which met all criteria



6 MOST PROMISING SITES —
well distributed to form a system

Two Recommended Pilot Sites — Saltwater Park—South Beach & Shoreview Park



*Readily available for
off-leash use*

*Opportunity for
traditional and timed-
use implementation*

Site Evaluation Criteria

abbreviated Ⓞ in no particular order...

- less used by others
- potential for enclosure by natural or manmade boundaries
- ability to control storm water runoff
- potential for buffer zones between off-leash areas and other active park uses
- absence of hazards
- provides an area for people with limited mobility
- avoids impacts to Environmentally Critical Areas
- provides some parking

Shoreline Off-Leash Dog Area Study Group

Accomplishments

SPRING 2007

- ✓ Stepped up enforcement of leash laws — first with warnings, then with tickets
- ✓ Received 26 OLDA Study Group applications
- ✓ Shoreline Park Board selected 11 citizens to serve with three Park Board members and one staff member

SUMMER 2007 — MET 2 TIMES

- ✓ Held first OLDA Study Group meeting — introduced process and past work
- ✓ Established baseline data on licensed dog population
- ✓ Visited existing OLDA sites in the region
- ✓ Visited potential sites in Shoreline parks and open spaces
- ✓ Discussed approach with Park Board

FALL 2007 — MET 5 TIMES

- ✓ Published article in Currents
- ✓ Reviewed “Best Practices” for OLDAs across the country and beyond
- ✓ Drafted Off-Leash Dog Area Program Guidelines — established mission, approach, schedule, criteria, rules and outreach strategy
- ✓ Gained approval of approach from Park Board
- ✓ Gained approval of draft Off-Leash Dog Area Program Guidelines from Park Board

WINTER 2008 — MET 6 TIMES

- ✓ Compiled inventory of available open spaces in Shoreline with potential for OLDA

- ✓ Established relationship with Shore Dogs and cultivated their role as stewards of future OLDAs
- ✓ Established criteria for potential pilot sites
- ✓ Completed review of site inventory — narrowed 38 potential sites down to 14

SPRING 2008 — MET 4 TIMES

- ✓ Identified 6 most promising pilot sites for initial implementation
- ✓ Hosted public meeting on June 14, 2008
- ✓ Conducted SEPA environmental review on 6 most promising pilot sites

SUMMER 2008

- ✓ Collected public comment

FALL 2008 — MET 4 TIMES

- ✓ Present findings and recommendations to community groups
- ✓ Brought implementation plan to Park Board for approval
- ✓ Hosting public meeting on October 29, 2008

WINTER 2009

- ☐ Will bring implementation plan to City Council for adoption
- ☐ Will develop design for selected pilot sites

2009

- ☐ Will construct and open pilot sites for public use
- ☐ Will monitor pilot sites

Fact Sheet



Off-Leash Dog Areas Pilot Project

Work Plan

Summer & Fall 2007

OLDA Study Group conducts research, develops criteria and identifies pool of sites.

Winter 2008

Study Group evaluates 38 sites.

Spring 2008

Study Group screens from 14 possible sites to the 6 most promising sites.

Summer 2008

Study Group gathers public comment on process and sites, hosts public meeting and gives briefings to organizations.

Fall 2008

Study Group reviews public comment, makes final recommendations to the Parks, Recreation & Cultural Services (PRCS) Board and hosts public meeting. PRCS Board makes final recommendation to the Shoreline City Council.

Winter 2009

SEPA Review and design ensue for recommended pilot sites.

2009

Pilot off-leash dog areas are constructed and put into use. Site monitoring begins.

2010

Report on pilot off-leash dog areas pilot program prepared.

The City of Shoreline supports the development of an Off-Leash Dog Area Program that establishes a system of off-leash areas that provide a safe place for community members to recreate with their dogs as they exercise, play and socialize off-leash. A volunteer committee of Shoreline residents, the Off-Leash Dog Area (OLDA) Study Group, has been working since the summer of 2007 to identify promising pilot sites in the City. Locations have been identified that are broadly distributed throughout the city to serve Shoreline neighborhoods with nearby off-leash dog areas.

The Off-Leash Dog Area (OLDA) Study Group

The OLDA Study Group was formed from a group of citizens who responded to the May 2007 *Currents* article requesting volunteers to participate in a work group. They began by reviewing past research done in preparation for the bond issue, then proceeded with additional investigation into facilities across the county and review trips to regional sites. Their review included physical attributes of the sites as well as the rules and management practices that kept them safe and viable. Through additional research from many cities throughout the region and country, they developed a set of criteria to use in evaluating potential sites and a list of 38 open space sites in Shoreline. Each site was visited by members and subsequent meetings were focused on evaluation of the sites in relation to the established criteria. (See sidebar other side.)

continued >

