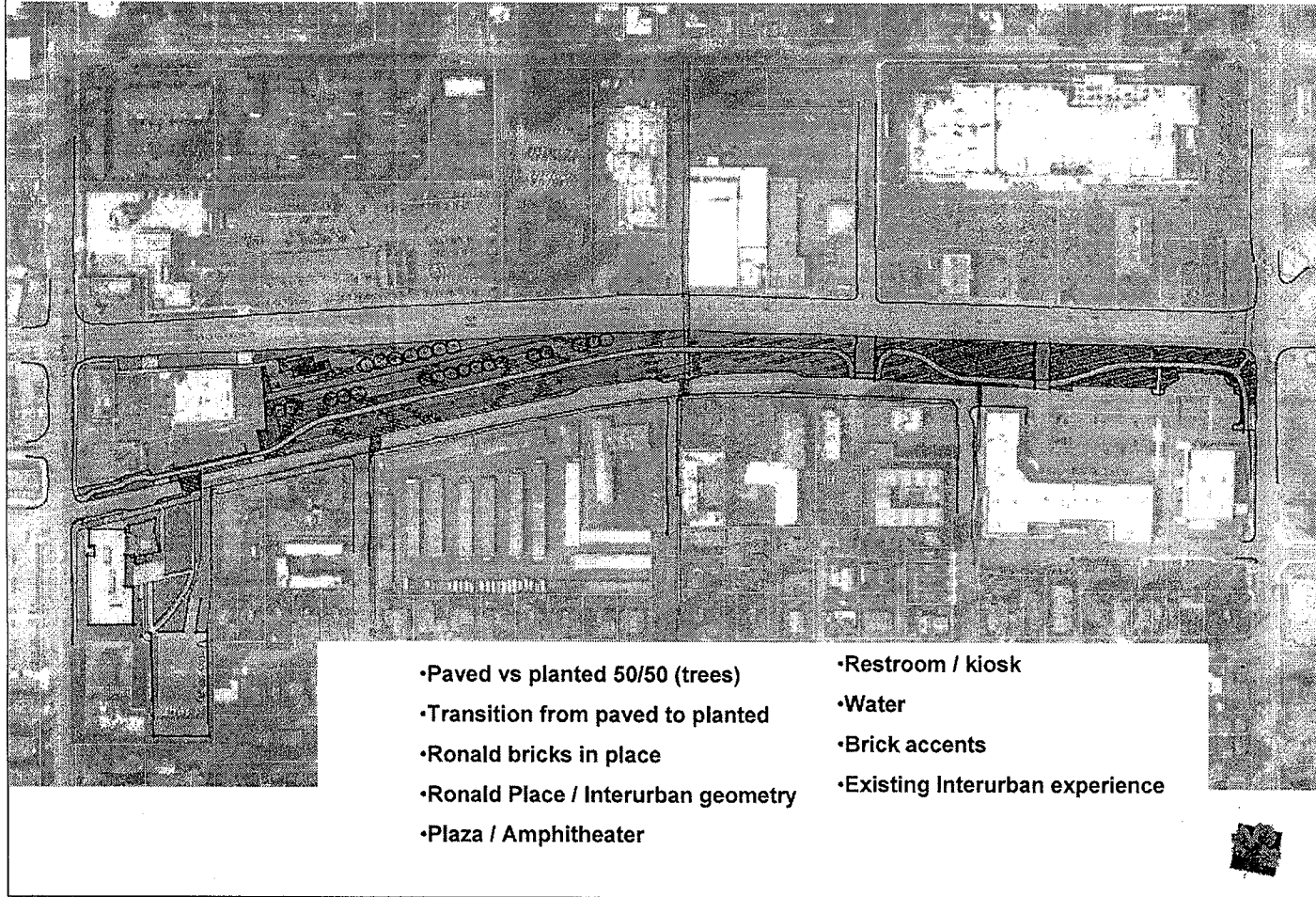


# Shoreline Reflection

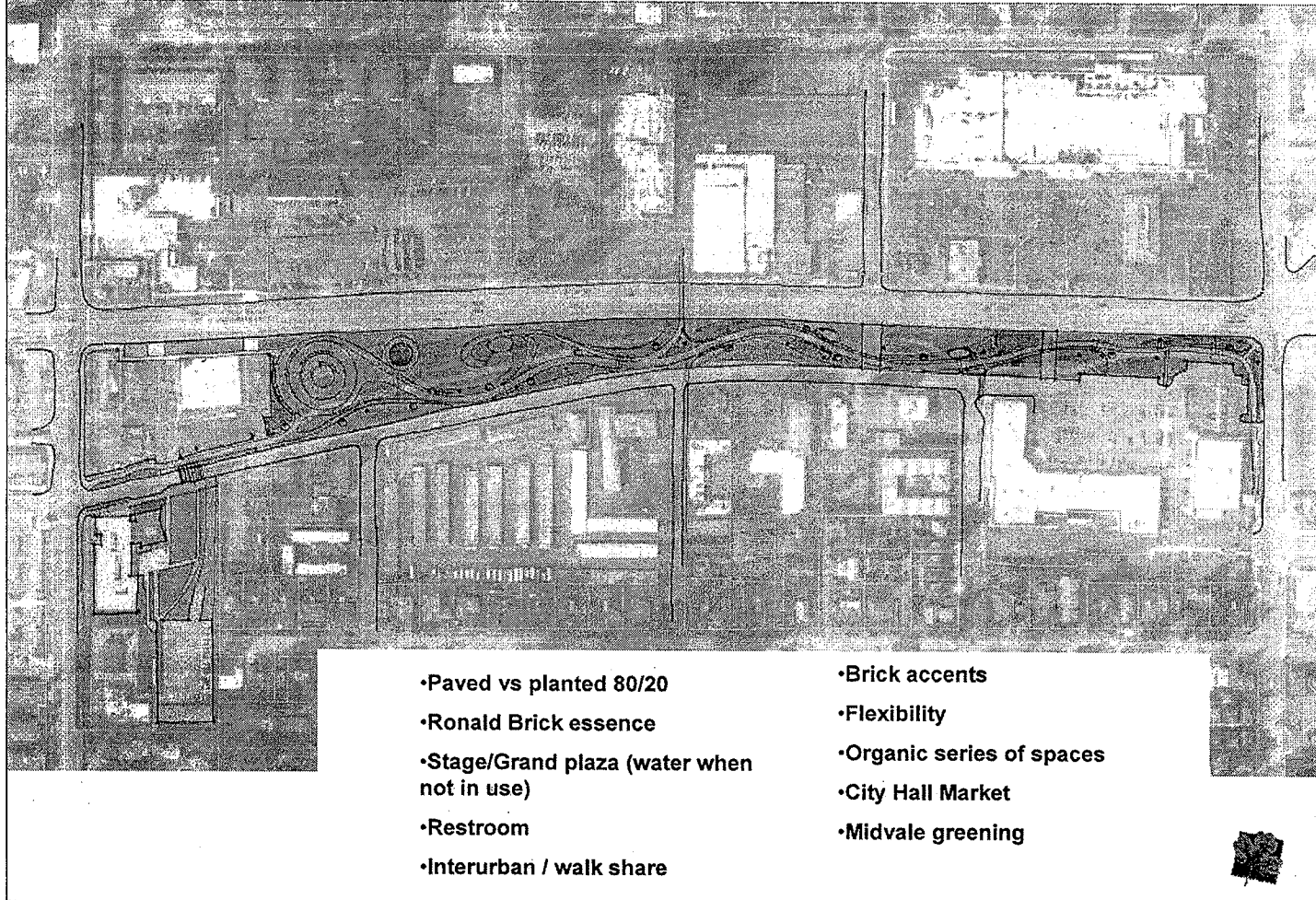
Shoreline Influences: Ronald Place, Bricks,  
Historic Geometry



Building off the geometry of Ronald Place and the history of this unique feature that is only in Shoreline, all of the design elements follow the angles set up by the old bricks. The Interurban Trail and Ronald Place Bricks are left in place. Community gathering areas are created by forming rooms and defining them by rows of trees or other paved features. As you move north through the space, a series of planting elements march through the landscape forming gateways and patterns that mimic crop rows. Water is represented on the site by allowing it to pool in a thin layer to transform the space during rains into reflective surfaces.

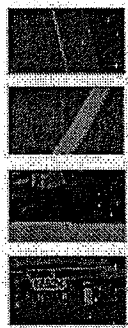
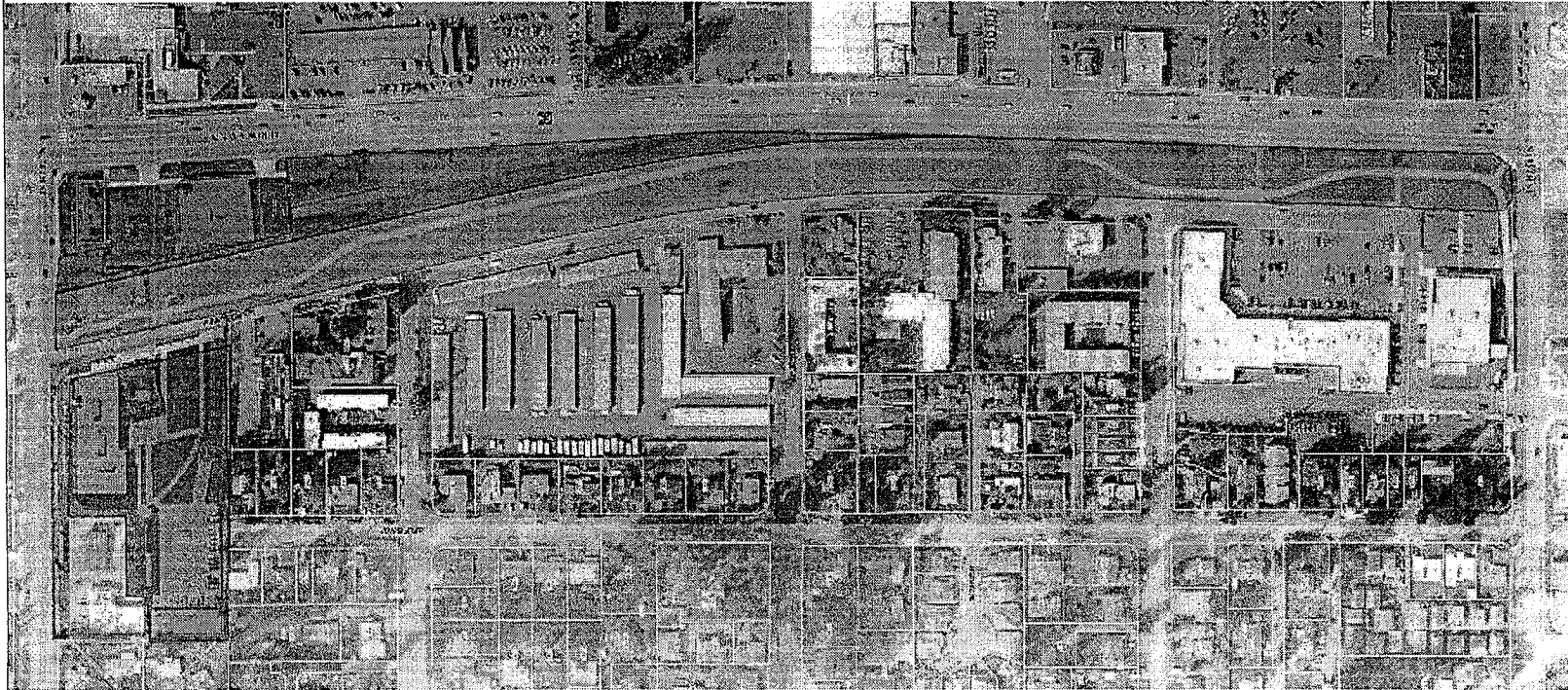
# Shoreline Center Stage

Shoreline Influences: Edge to Edge (shore to shore),  
Neighborhood representation 14 nodes (art, events)



Working off the notion of Shore to Shore (how Shoreline was named), this scheme looks to re-locate the Interurban Trail into a pathway that winds from edge to edge to create a unique experience as you travel through the site. Fourteen nodes are presented along the way, representing each neighborhood of Shoreline. A Center stage performance space with rotating stage walls is on the southern end of the Park, adjacent to a round restroom. This scheme honors the Ronald Place Bricks, but moves them around to fit into the design scheme. The main plaza space doubles as a water feature when not in use, artistically lit at night, to provide a unique element for visitors along the Aurora Corridor.

## Project Site



- City of Shoreline
- Seattle City Light
- Shoreline City Hall
- Private Property



Park site and Property Ownership (Note North is to the right of the slide)