

**CITY COUNCIL AGENDA ITEM**  
CITY OF SHORELINE, WASHINGTON

**AGENDA TITLE:** Approval of Neighborhood Mini-Grant Funding for Echo Lake Neighborhood Association and Briarcrest Neighborhood Association  
**DEPARTMENT:** City Manager's Office/Community Services Division  
**PRESENTED BY:** Rob Beem, Community Services Division Manager  
Nora Smith, Neighborhood Coordinator  
**ACTION:**    ☐ Ordinance    ☐ Resolution    ☒ Motion    ☐ Discussion

**PROBLEM/ISSUE STATEMENT:**

As established in Resolution No. 54, the annual City budget includes funding for Neighborhood Mini-Grants and City Council approval is required. Two Neighborhood Mini-Grants are currently proposed for City Council approval.

Echo Lake Neighborhood Association is requesting \$4,848 to transform a high traffic, informal pedestrian pathway to a well maintained, accessible pathway on N. 188<sup>th</sup> Street unimproved right-of-way. This section of N. 188<sup>th</sup> lies between Densmore Avenue North and Ashworth Avenue North and serves as part of an east-west walking corridor from the neighborhood to the Interurban Trail and commercial district near N. 185<sup>th</sup> and Aurora Avenue North.

Echo Lake Neighborhood Association (ELNA) is sponsoring this project which was initiated by immediate neighbors to N. 188<sup>th</sup> on Densmore and Ashworth Streets. The neighbors would like to make a tangible pedestrian pathway improvement to the neighborhood, encourage community interest and sense of ownership, and create an informal gathering space. In addition to the accessible trail, volunteers will beautify the area by removing invasive species and overgrown vegetation, and planting and watering low maintenance species.

Briarcrest Neighborhood Association (BNA) is requesting \$866 to improve NE 147<sup>th</sup> unimproved right-of-way by removing invasive species and planting natives. This section of NE 147<sup>th</sup> lies between 27<sup>th</sup> Avenue NE and 28<sup>th</sup> Avenue NE and serves as an informal east-west walking corridor within Briarcrest. BNA is hoping to enhance this location as wildlife habitat and as an informal neighborhood gathering spot.

**RESOURCE/FINANCIAL IMPACT:**

City Council authorized \$20,000 in the 2011 budget to fund Neighborhood Mini-Grants. This is the fourth and fifth 2011 Neighborhood Mini-Grants submitted for approval. The remaining Neighborhood Mini-Grant budget is \$9,508. The requested funding for the N. 188<sup>th</sup> pathway project is \$4,848 and for the NE 147<sup>th</sup> planting is \$866. The project budgets are included in Attachments A and C.

### **RECOMMENDATION**

Staff recommends that Council approve \$4,848 in Neighborhood Mini-Grant funds to Echo Lake Neighborhood Association for a pathway on N. 188<sup>th</sup> unimproved right-of-way between Ashworth Avenue North and Densmore Avenue North and \$866 in Neighborhood Mini-Grant funds to Briarcrest Neighborhood Association for plantings on NE 147<sup>th</sup> unimproved right-of-way.

Approved By:      City Manager   ja   City Attorney

## **INTRODUCTION**

Echo Lake Neighborhood Association (ELNA) is requesting Neighborhood Mini-Grant to create an accessible pathway and beautify right-of-way on N. 188<sup>th</sup>. This unimproved right-of-way between Ashworth Avenue North and Densmore Avenue North will serve as both a pedestrian pathway and an informal community gathering place.

Briarcrest Neighborhood Association (BNA) is requesting a Neighborhood Mini-Grant to improve NE 147<sup>th</sup> unimproved right-of-way by removing invasive species and planting natives. This section of NE 147<sup>th</sup> lies between 27<sup>th</sup> Avenue NE and 28<sup>th</sup> Avenue NE and serves as an informal east-west walking corridor within Briarcrest.

## **BACKGROUND**

**Neighborhood Mini-Grant Background:** Resolution No. 54 established the Neighborhood Mini-Grant program, with the process and administration of the funds to be handled by Neighborhoods staff. The allocation of the total funds available is determined from year to year by appropriation of the City Council. All such grants to individual neighborhood associations are governed by rules approved by the City Council on October 7, 1996 and amended on November 23, 1998. Grants must be approved by City Council prior to their implementation.

The Neighborhood Mini-Grant program provides grants of up to \$5,000 to each of the actively organized, qualifying neighborhood associations in the City of Shoreline on a first come, first served basis. Neighborhood Associations are required to provide a dollar for dollar match to Neighborhood Mini-Grant funds. A match may be generated from co-sponsoring groups, businesses, organizations, schools, media, in-kind donations and/or "sweat equity".

Neighborhood Mini-Grant project categories include the following:

- Projects that create or enhance a tangible improvement in the neighborhood;
- Projects that disseminate information and increase awareness of the goals and mission of the neighborhood association to the neighborhood community;
- Projects that directly benefit a public agency or organization and its immediate neighborhood, and that require the active involvement of both the public agency and members of the neighborhood in planning and carrying out the program.

The proposed projects meet the goals of the Neighborhood Mini-Grant program by making a tangible improvement to unimproved City right-of-way, involving neighborhood volunteers, and raising awareness of the Echo Lake Neighborhood Association and Briarcrest Neighborhood Association.

**N. 188<sup>th</sup> Street Right-of-Way Background:** Several residents who live near the N. 188<sup>th</sup> right-of-way initiated a process with nearby neighbors in 2011 to identify interests, refine ideas, review and revise a conceptual plan, and commit to create an improved pathway and beautify the N. 188<sup>th</sup> right-of-way.

Key elements include:

- Creating an accessible gravel pathway.
- Utilizing the expertise of a volunteer landscape architect who has created the conceptual design and has the equipment and expertise to implement the pathway project with volunteers.
- Low maintenance plantings to beautify the location and enhance habitat.
- Maintaining an open grassy area for neighborhood picnics and gatherings.
- ELNA and adjacent neighbors will sign a maintenance agreement to water and weed the improvements over the next several years.

**NE 147<sup>th</sup> Right-of-Way Background:** Briarcrest Neighborhood Association volunteers plan to talk one-on-one with adjacent neighbors to promote interest and involvement in site enhancements. The Neighborhood Association will lead work parties to remove invasive species and plant natives within current planted areas. BNA plans to establish a volunteer cadre to mow the grassy slope, taking over this task for an adjacent neighbor who has mowed the site for decades but is no longer able to due to health issues as well as water newly established plants.

### **STAKEHOLDER OUTREACH**

**N. 188<sup>th</sup>:** There were two community meetings of neighbors adjacent to this section of N. 188<sup>th</sup> to discuss community interests and ideas. The group decided on an accessible path as a primary priority. A landscape architect who lives in the neighborhood donated his time to design the pathway and plantings. An initial design was presented at a community meeting and revised based on community input.

**NE 147<sup>th</sup>:** Briarcrest Neighborhood Association plans to conduct one-on-one outreach with nearby neighbors to discuss the immediate planting work, and gauge interest in potential future trail improvements.

### **COUNCIL GOAL(S) ADDRESSED**

The grassroots development of these projects by the community, and subsequent implementation and maintenance, meets the goal of public engagement identified in Council Goal 5 “Expand opportunities for effective citizen communication and community engagement.” In addition, improving pedestrian facilities encourages healthy physical activity as part of Goal 6, the Healthy City Strategy.

### **RESOURCE/FINANCIAL IMPACT**

City Council authorized \$20,000 in the 2011 budget to fund Neighborhood Mini-Grants. This is the fourth and fifth 2011 Neighborhood Mini-Grants submitted for approval. The remaining Neighborhood Mini-Grant budget is \$9,508. The requested funding for the N. 188<sup>th</sup> pathway project is \$4,848 and for the NE 147<sup>th</sup> planting is \$866. The project budgets are included in Attachments A and C.

**Echo Lake Neighborhood Association  
2011 Mini-Grant Project Budget  
N. 188<sup>th</sup> Street Pathway Project**

<b><u>Item</u></b>	<b><u>Cost*</u></b>
<b><i>Site preparation costs</i></b>	
City of Shoreline Right-of-Way permit	\$ 145
Supplies: hose bib water meter, fuel for machinery, misc.	\$ 230
Stepping Stones	\$ 500
Soil amendment for planting beds	\$ 125
Tax	\$ 95
<b>Subtotal Site Preparation</b>	<b>\$1,095</b>
<b><i>Installation of Path</i></b>	
20 yards 5/8 inch minus gravel	\$ 720
Tax	\$ 68
<b>Subtotal Path</b>	<b>\$808</b>
<b><i>Purchase and Install Plants and Mulch</i></b>	
Supplies: gator bags, fertilizer, temporary irrigation parts, misc	\$ 760
Plants	\$1930
Tax	\$ 255
<b>Subtotal Plants and Mulch</b>	<b>\$2,945</b>
<b>Total Mini-Grant Request</b>	<b>\$4,848</b>

\* Estimated costs include tax and may be adjusted based on final pricing.

**Neighborhood Match**

<b><u>Match Item</u></b>	<b><u>Estimated Value</u></b>
<b>Materials and Equipment</b>	
Donated equipment rental (i.e. to grade, till, load and compact)	\$ 600
Donated plants	\$ 282
<b>Volunteer Time</b>	
Landscape Architect - path and garden design 10 hrs@\$60/hr	\$ 600
Landscape Project Management - path and garden installation	\$1,710
Work parties, approx. 180 hrs @\$15/hr	\$2,700
<b>ESTIMATED TOTAL VALUE OF MATCH:</b>	<b>\$5,892</b>

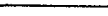

## **RECOMMENDATION**

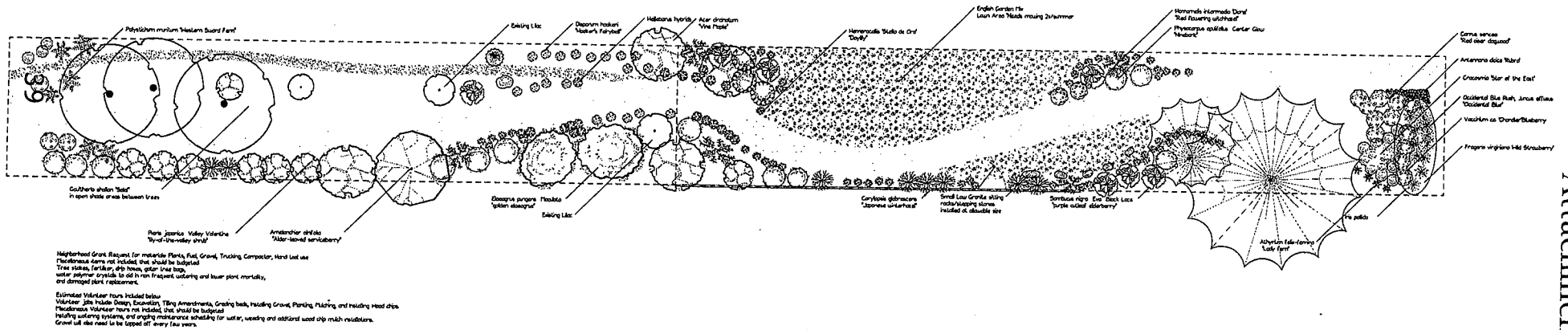
Staff recommends that Council approve \$4,848 in Neighborhood Mini-Grant funds to Echo Lake Neighborhood Association for a pathway on N. 188<sup>th</sup> unimproved right-of-way between Ashworth Avenue North and Densmore Avenue North and \$866 in Neighborhood Mini-Grant funds to Briarcrest Neighborhood Association for plantings on NE 147<sup>th</sup> unimproved right-of-way.

## **ATTACHMENTS**

- A – N. 188<sup>th</sup> Street Pathway Budget
- B – N. 188<sup>th</sup> Street Pathway Conceptual Design
- C – N.E. 147<sup>th</sup> Street Right-of-Way Planting Budget

N. 188th Street Pathway Project [Densmore to Ashworth]  
Concept Drawing

	<p>PLANT CONTAINER</p> <p>ELEMENP40CF</p>	<p>PROJECT</p> <p>Densmore-Ashworth Pathway project</p>	<p>SIZE</p> <p>1' x 1'</p>		<p>Notes:</p> <p>Plan includes: Densmore Backside, 6' wide gravel path, wood chip play/sitting areas with overgrown shade and rain cover.</p> <p>Plant material: 1M drought tolerant perennials.</p> <p>Both created from excavated path material with addition of mulch amendments.</p> <p>Original to be removed and replaced with the original plant material.</p> <p>Provide a list of the plant material to be used, from the list of plants in the original plan.</p>
---	---	---	----------------------------	---	---



Attachment C

**Briarcrest Neighborhood Association  
2011 Mini-Grant Project Budget  
NE 147th Street Right-of-Way Planting**

<b><u>Item</u></b>	<b><u>Cost*</u></b>
Native Plants	\$ 558
Supplies: gloves, tools and misc.	\$ 100
Sales tax	\$ 63
City of Shoreline Right-of-Way permit	\$ 145
<b>Total</b>	<b>\$ 866</b>

**Total Mini-Grant Request** **\$ 866**

\* Estimated costs include tax and may be adjusted based on final pricing.

**Neighborhood Match**

<b><u>Match Item</u></b>	<b><u>Estimated Value</u></b>
<b>Volunteer Time</b>	
Landscape Design – plant installation design 10 hrs@\$40/hr	\$ 400
Work parties and coordination approx. 98 hrs @\$15/hr	\$ 1470
<b>ESTIMATED TOTAL VALUE OF MATCH:</b>	<b>\$1,870</b>