

**CITY COUNCIL AGENDA ITEM**

CITY OF SHORELINE, WASHINGTON

<b>AGENDA TITLE:</b>	Authorize the City Manager to Execute a Construction Contract with Pellco Construction in the amount of \$344,625 for the Briarcrest Safe Routes to Schools Project
<b>DEPARTMENT:</b>	Public Works
<b>PRESENTED BY:</b>	Tricia Juhnke, Capital Projects Administrator
<b>ACTION:</b>	<input type="checkbox"/> Ordinance <input type="checkbox"/> Resolution <input checked="" type="checkbox"/> Motion <input type="checkbox"/> Discussion <input type="checkbox"/> Public Hearing

**PROBLEM/ISSUE STATEMENT:**

The 2012-2017 Capital Improvement Program (CIP) includes the project to install sidewalks as part of the Safe Routes to School Program near Briarcrest Elementary (Attachment A). This project was formally advertised and bids were opened September 18, 2012. The low bid is Pellco Construction, which requires authorization by the City Council.

**RESOURCE/FINANCIAL IMPACT:**

This project is funded through the Roads Capital Fund in the adopted CIP. Below is a summary of the authorized budget and projected expenditures per the proposed 2013-2018 CIP.

Below is a breakdown on the expenditures and revenue for the Briarcrest Safe Routes to Schools Project:

**EXPENDITURES**

Design:		
Staff and other Direct Expenses		\$59,205
Education:		\$10,000
Enforcement:		\$10,000
Construction:		
Staff and other Direct Expenses	\$ 36,320	
Construction Contract	\$344,625	
Total Construction		\$380,945
Contingency		\$38,945
1% for the Arts		\$3,446
<b>Total Project Cost</b>		<b>\$502,541</b>

**REVENUE**

Safe Routes to Schools Grant	\$385,000
Shoreline School District	\$23,000
Roads Capital Fund	\$149,500
<hr/>	
Total Revenue	\$557,500

**RECOMMENDATION**

Authorize the City Manager to execute a construction contract with Pellco Construction in the amount of \$344,625 for the Briarcrest Safe Routes to Schools Project.

Approved By: City Manager **JU** City Attorney **IS**

**ATTACHMENTS:**

Attachment A – Project Map

**BACKGROUND:**

In 2011 the City was awarded a grant through the state Safe Routes to School Program to install sidewalks serving Briarcrest Elementary (Attachment A). Specifically sidewalks are to be installed on NE 158<sup>th</sup> between 25<sup>th</sup> Ave NE and the school, on 27<sup>th</sup> Ave NE between NE150<sup>th</sup> and NE 155<sup>th</sup> and a small segment on NE 155<sup>th</sup> between 27<sup>th</sup> Ave NE and the school. The scope of the project also includes education and enforcement in support of improving the pedestrian environment.

The project was formally advertised on August 27, 2012, and bids were opened on September 18. Six bids were received and Pellco Construction was determined to be the lowest responsible bidder at an amount of \$344,625. City staff has verified that the contractor meets all the responsibility criteria defined by law and the City contract documents. Construction is anticipated to start in mid October with completion anticipated at the end of December.

One of the requirements of the Safe Routes to Schools grant is to incorporate an educational and enforcement component into the project. To meet this requirement, the City has contracted with Feet First to provide training opportunities and educational posters/brochures to Briarcrest Elementary staff. The educational training/brochures will focus on safety for pedestrians and establishing programs to encourage walking/biking to school. Staff will also be working with the Shoreline Police department to provide additional educational instruction to the students and to provide traffic enforcement periodically throughout the school year.

**ALTERNATIVES ANALYSIS**

Six (6) bids were received as detailed in the following table:

Contractor Name	Bid Amount
<b>Pellco Construction</b>	<b>\$344,625.00</b>
McCann Construction Enterprises	\$348,169.11
Interwest Construction	\$364,668.63
Kamins Construction	\$370,850.16
Award Construction	\$382,230.20
Kar-Vel Construction	\$438,190.64
<i>Engineer's Estimate</i>	<i>\$378,780.00</i>

City staff has determined that Pellco Construction's bid is responsive and that they have met the requirements. This was verified by:

- Evaluation of all bids through the creation of bid tabs
- Verification that the Disadvantaged Business Enterprise (DBE) and training goal requirements set by the Washington State Department of Transportation (WSDOT) have been met
- Verification that the contractor has not been barred from contracting on federal- and state-funded projects
- Coordination with our funding partners to ensure their requirements have been met

## FINANCIAL IMPACT

Below is a breakdown of project expenditures and revenues per the proposed 2013-2018 CIP.

### EXPENDITURES

Design:		
Staff and other Direct Expenses		\$59,205
Education:		\$10,000
Enforcement:		\$10,000
Construction:		
Staff and other Direct Expenses	\$ 36,320	
Construction Contract	\$344,625	
Total Construction		\$380,945
Contingency		\$38,945
1% for the Arts		\$3,446
<b>Total Project Cost</b>		<b>\$502,541</b>

### REVENUE

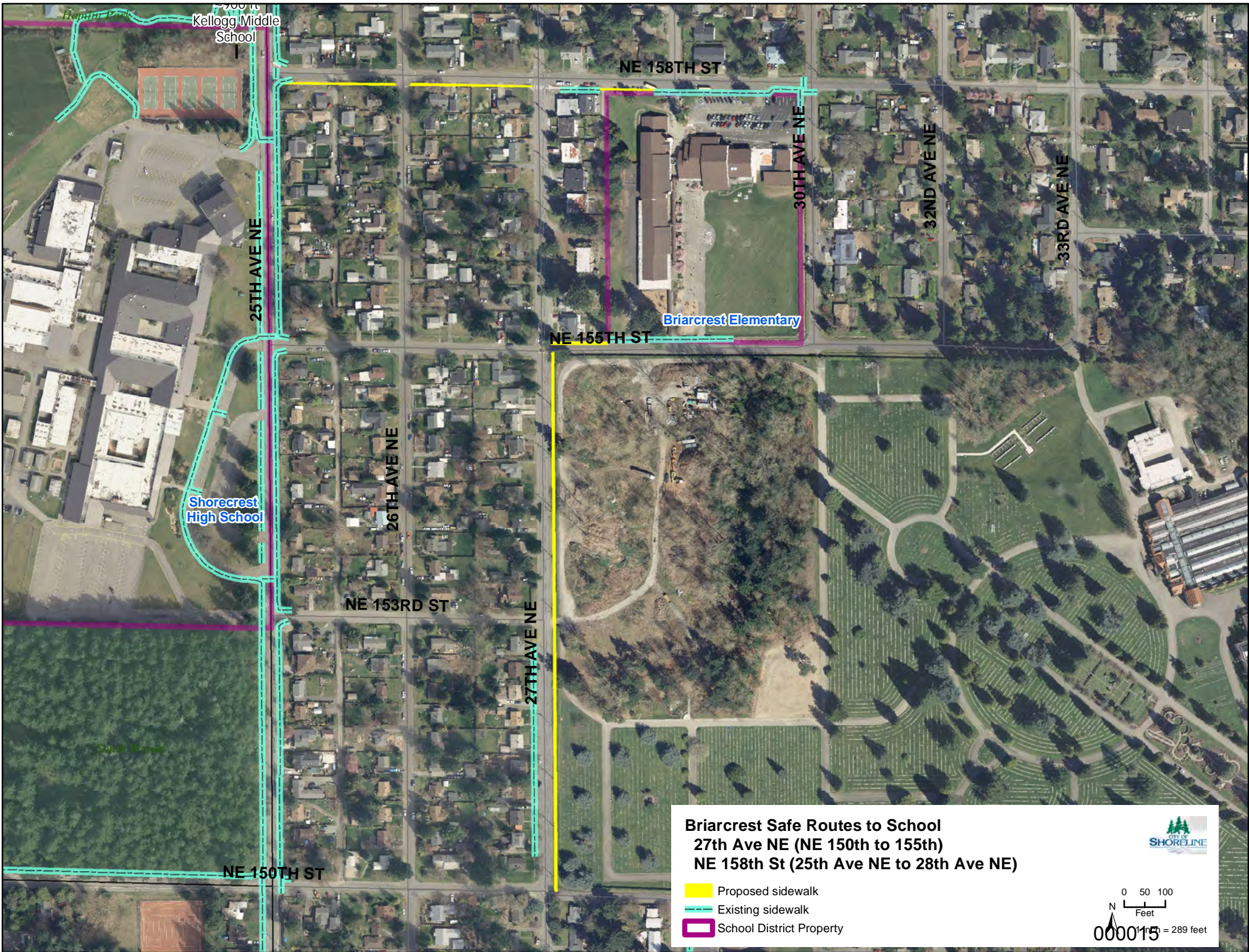
Safe Routes to Schools Grant		\$385,000
Shoreline School District		\$23,000
Roads Capital Fund		\$149,500
<b>Total Revenue</b>		<b>\$557,500</b>

The proposed 2013-2018 CIP reflects an increase in project expenditures and revenues from the approved 2012-2017 CIP. These estimates were revised prior to project advertisement and bid opening. The estimated cost increase is a result of added scope to better improve ADA access and account for additional expenses as a result of the federal funds which have more extensive administration and inspection requirements than a state or locally funded project. Additional Roads Capital funds were available as a result of other projects being completed under the authorized budgeted amounts. Any remaining funds will be returned to the Roads Capital Fund when the project is completed.


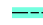

### RECOMMENDATION


Authorize the City Manager to execute a construction contract with Pellco Construction in the amount of \$344,625 for the Briarcrest Safe Routes to Schools Project.

Approved By:       City Manager \_\_\_\_ City Attorney \_\_\_\_



**Briarcrest Safe Routes to School**  
**27th Ave NE (NE 150th to 155th)**  
**NE 158th St (25th Ave NE to 28th Ave NE)**

-  Proposed sidewalk
-  Existing sidewalk
-  School District Property



0 50 100  
Feet  
N  
0000115 = 289 feet