

CITY COUNCIL AGENDA ITEM
CITY OF SHORELINE, WASHINGTON

AGENDA TITLE:	Authorize the City Manager to Execute a Construction Contract with Doolittle Construction, LLC for the Implementation of the 2014 Bituminous Surface Treatment (BST) Program
DEPARTMENT:	Public Works Department
PRESENTED BY:	Mark Relph, Public Works Director Dan Repp, Public Works Utility and Operations Manager
ACTION:	<input type="checkbox"/> Ordinance <input type="checkbox"/> Resolution <input checked="" type="checkbox"/> Motion <input type="checkbox"/> Discussion <input type="checkbox"/> Public Hearing

PROBLEM/ISSUE STATEMENT:

The purpose of this report is to request the City Council to authorize the City Manager to enter into a contract with Doolittle Construction, LLC for \$619,312.89 for the 2014 Bituminous Surface Treatment (BST) pavement preservation program. Bids were opened on April 24, 2014 and there were two (2) bidders: Doolittle Construction, LLC, and Granite Construction.

RESOURCE/FINANCIAL IMPACT:

The City Council has authorized \$1,500,000 in the 2014 CIP Budget for the Annual Road Surface Maintenance Program. The bid amount of \$619,312.89 is less than the available budget.

RECOMMENDATION

Staff recommends the City Council move to authorize the City Manager to execute a construction contract with Doolittle Construction, LLC for \$ \$619,312.89 for the 2014 BST pavement preservation program, and to execute necessary change orders up to an aggregate of \$61.931.28.

Approved By: City Manager **DT** City Attorney **IS**

INTRODUCTION

The Public Works Department is using Bituminous Surface Treatment (BST) as a maintenance strategy to protect the City's roadway infrastructure investments made over the past 15 years. BST application was successfully implemented in 2011, 2012, and 2013.

BACKGROUND

The City Council established that maintaining and preserving the City's streets is a high priority. The City selected using BST as a key maintenance strategy for the City's road system. The first application of BST was in 2011 in the northeast quadrant of the City (Echo Lake), followed by the North City and Ballinger neighborhoods in 2012, and in 2013 work was completed in the North City, Briarcrest, Ridgecrest and Echo Lake areas. In 2013 the total BST contract cost was \$400,937.95.

DISCUSSION

The 2014 BST project will address roads in the Briarcrest and Ridgecrest neighborhoods. Approximately 10.6 miles of roadway have been selected for BST treatment. Attachment A to this staff report contains a map showing the location of the roads that will receive the BST application in 2014. Attachment B provides a detailed listing of each road segment to receive treatment. The Base Bid item (Schedule A) includes the cost to treat the 10.6 miles of roadway defined in Attachment B. The Additive Bid item (Schedule B) provides the cost to treat an additional 10,834 square yards of roadway to be defined during the project. Schedule B provides flexibility to apply chip seal patching on heavily rutted roads or other damaged road surfaces.

Bids for the BST project were opened on April 24, 2014 and there were two (2) bidders. Table 1 provides the results of the bid opening.

Table 1 - 2014 Bituminous Surface Treatment Bid Results

Contractor	Base Bid (Schedule A)	Additive Bid (Schedule B)	Total
Doolittle Construction	\$581,827.25	\$37,485.64	\$619,312.89
Granite Construction	\$750,494.45	\$39,544.10	\$790,038.55

Staff's project cost estimate was \$620,000, and Doolittle Construction's Base and Additive Bid of \$619,312 came in just under this estimate. Staff has completed their review of mandatory bidder responsibility criteria on Doolittle Construction, LLC, including State Agency fiscal compliance. References were satisfactory regarding quality of construction and their history of managing budget, materials, and personnel for this type of project.

As well, Doolittle Construction performed the BST work for the City in 2011, 2012, and 2013, and their performance on these previous City BST contracts has been excellent. Doolittle Construction has consistently demonstrated an attention to detail, the ability to

accommodate the needs of residents, and flexibility during the construction process that benefits the City and results in a high quality product. The anticipated project schedule is provided in Table 2 below.

Table 2. Anticipated 2014 Bituminous Surface Treatment Project Schedule.

Milestone	Start	Finish	Comments
Notice to Proceed	n/a	June 6, 2014	
Contractor Mobilizes	July 7, 2014	July 11, 2014	Equipment and material staged on-site.
BST Application	July 14, 2014	August 31, 2014	Final completion date is weather dependent.
Final Acceptance	n/a	September 12, 2014	

RESOURCE/FINANCIAL IMPACT

EXPENDITURES

Staff Cost	\$24,761.00
BST Construction:	
BST Construction Contract	\$619,312.89
BST Contract Contingency (10%)	<u>\$ 61,931.28</u>
Total BST	\$681,244.17
Hot Mix Asphalt and Crack Filling Contract	\$300,000.00
Pavement Management System Upgrade	\$150,000.00
Adjusted Road Surface Maintenance Contingency ¹	
\$100,000.00	
<hr/>	
Total Project Cost	\$1,256,005.17

REVENUE

Roads Capital Fund (Road Surface Maintenance)	\$1,500,000.00
Total Revenue	\$1,500,000.00
<hr/>	
Program Balance (Revenue - Expenditures)	\$243,994.83

¹ The Road Surface Maintenance Program contingency provides funding for unknowns in any of the projects included in the Program and represents approximately 10% of the total program budget. Individual Project contingencies are allocated from this item while keeping \$100,000 available for expected extra work in the Hot Mix Asphalt and Pavement Management System contracts.

The positive results from the BST bid opening have yielded a program balance of approximately \$244,000. Staff is pursuing either an additional Small Works project for more BST, and/or an increase in the scope of the Hot Mix Asphalt & Crack Filling contract, in order to maximize the street maintenance program for 2014.

Staff recommends that the contingency budgeted for this contract, \$ 61,931.28, be authorized for change orders during performance of the contract without further Council action. As per SMC 2.60.040D(3)(b), change orders are limited to \$50,000 unless Council extends this limit upon its award of a particular contract.

RECOMMENDATION

Staff recommends the City Council move to authorize the City Manager to execute a construction contract with Doolittle Construction, LLC for \$ \$619,312.89 for the 2014 BST pavement preservation program, and to execute necessary change orders up to an aggregate of \$61.931.28.





ATTACHMENTS:

- Attachment A: 2014 Proposed BST Project Map
- Attachment B: Detailed List of 2014 BST Road Segments

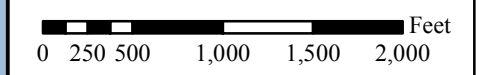
2014

Proposed Bituminous Surface Treatment

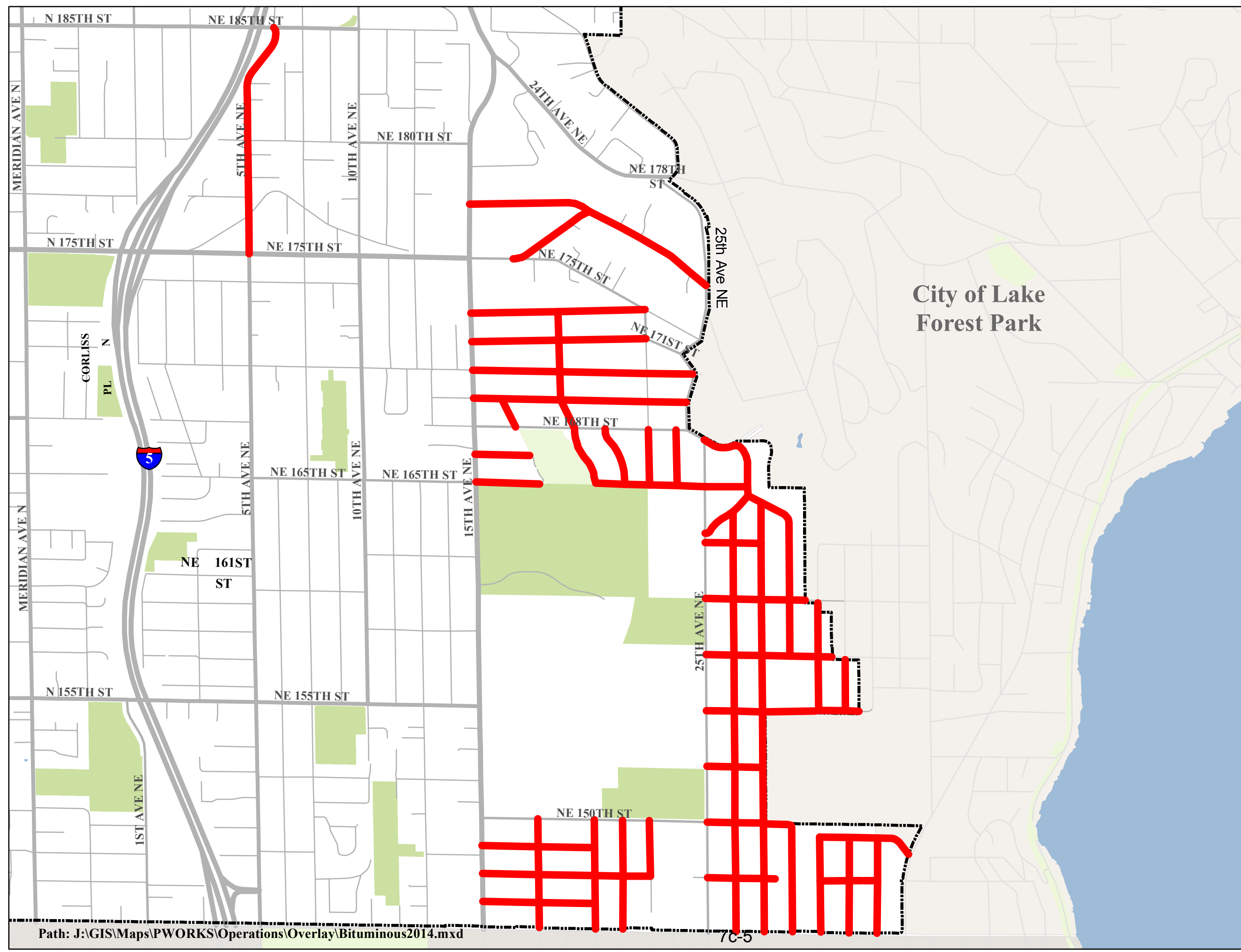
Map Feature

-  Bituminous 2014 Proposed Overlay
-  City of Shoreline Park
-  Other City Park
-  Water

2014 BST Distances:
~ 11.9 centerline miles
~ 23.9 lane miles



User: JRitzman
Date: 1/31/2014



2014 City of Shoreline BST Street Locations

ITEM	STREET NAME	FROM LOCATION	TO LOCATION	LENGTH	WIDTH	SQUARE YARDS
1	16TH AV NE	NE 168 ST	NE 169 ST	351	22	858
2	17TH AV NE	NE 145 ST	NE 146 ST	290	20	644
3	17TH AV NE	NE 146 ST	NE 147 ST	332	20	738
4	17TH AV NE	NE 147 ST	NE 148 ST	328	20	729
5	17TH AV NE	NE 148 ST	NE 150 ST	332	24	885
6	18TH AV NE	NE 165 ST	NE 168 ST	715	23	1,827
7	18TH AV NE	NE 168 ST	NE 169 ST	346	22	846
8	18TH AV NE	NE 169 ST	NE 170 ST	326	22	797
9	18TH AV NE	NE 170 ST	NE 171 ST	373	22	912
10	18TH AV NE	NE 171 ST	NE 172 ST	338	22	826
11	20TH AV NE	NE 145 ST	NE 146 ST	291	30	970
12	20TH AV NE	NE 146 ST	NE 147 ST	330	26	953
13	20TH AV NE	NE 147 ST	NE 148 ST	324	26	936
14	20TH AV NE	NE 148 ST	NE 150 ST	335	26	968
15	21ST AV NE	NE 165 ST	NE 168 ST	679	31	2,339
16	22ND AV NE	NE 145 ST	NE 147 ST	625	33	2,292
17	22ND AV NE	NE 147 ST	NE 150 ST	656	32	2,332
18	22ND AV NE	NE 165 ST	NE 168 ST	623	32	2,215
19	23RD AV NE	NE 147 ST	NE 150 ST	656	26	1,895
20	23RD AV NE	NE 165 ST	NE 168 ST	627	20	1,393
21	25TH PL NE	25 AV NE	27 AV NE	633	22	1,547
22	26TH AV NE	NE 145 ST	NE 147 ST	615	28	1,913
23	26TH AV NE	NE 147 ST	NE 150 ST	624	27	1,872
24	26TH AV NE	NE 150 ST	NE 153 ST	624	28	1,941
25	26TH AV NE	NE 153 ST	NE 155 ST	621	28	1,932

ITEM	STREET NAME	FROM LOCATION	TO LOCATION	LENGTH	WIDTH	SQUARE YARDS
26	26TH AV NE	NE 155 ST	NE 158 ST	623	28	1,938
27	26TH AV NE	NE 158 ST	NE 160 ST	619	28	1,926
28	26TH AV NE	NE 160 ST	NE 163 ST	626	28	1,948
29	26TH AV NE	NE 163 ST	25 PL NE	346	28	1,076
30	27TH AV NE	28 PL NE	NE 165 ST	102	33	374
31	27TH AV NE	NE 145 ST	NE 147 ST	617	23	1,577
32	27TH AV NE	NE 147 ST	NE 150 ST	615	27	1,845
33	27TH AV NE	NE 150 ST	NE 153 ST	622	26	1,797
34	27TH AV NE	NE 153 ST	NE 155 ST	620	25	1,722
35	27TH AV NE	NE 155 ST	NE 158 ST	620	23	1,584
36	27TH AV NE	NE 158 ST	NE 160 ST	630	25	1,750
37	27TH AV NE	NE 160 ST	NE 163 ST	620	20	1,378
38	27TH AV NE	NE 163 ST	28 PL NE	438	26	1,265
39	27TH AV NE	NE 165 ST	NE 168 ST	977	34	3,691
40	28TH AV NE	NE 145 ST	NE 150 ST	1,257	27	3,771
41	28TH AV NE	NE 158 ST	NE 160 ST	629	26	1,817
42	28TH AV NE	NE 160 ST	28 PL NE	926	27	2,778
43	28TH PL NE	27 AV NE	27 AV NE	679	24	1,811
44	30TH AV NE	NE 145 ST	NE 147 ST	601	26	1,736
45	30TH AV NE	NE 147 ST	NE 149 ST	526	27	1,578
46	30TH AV NE	NE 155 ST	NE 158 ST	607	26	1,754
47	30TH AV NE	NE 158 ST	NE 160 ST	633	27	1,899
48	31ST AV NE	NE 145 ST	NE 147 ST	598	27	1,794
49	31ST AV NE	NE 147 ST	NE 149 ST	479	27	1,437
50	32ND AV NE	NE 145 ST	NE 147 ST	607	27	1,821
51	32ND AV NE	NE 147 ST	NE 149 ST	469	22	1,146

ITEM	STREET NAME	FROM LOCATION	TO LOCATION	LENGTH	WIDTH	SQUARE YARDS
52	32ND AV NE	NE 155 ST	20 AV NE	1,280	29	4,124
53	NE 147TH ST	15 AV NE	31 AV NE	1,948	33	7,143
54	NE 148TH ST	15 AV NE	20 AV NE	1,267	26	3,660
55	NE 149TH ST	30 AV NE	SR 522	1,034	23	2,642
56	NE 150TH ST	25 AV NE	28 AV NE	974	24	2,597
57	NE 153RD ST	25 AV NE	27 AV NE	661	22	1,616
58	NE 155TH ST	25 AV NE	30 AV NE	1,780	21	4,153
59	NE 155TH ST	30 AV NE	32 AV NE	317	22	775
60	NE 155TH ST	32 AV NE	CITY LIMIT - LFP	324	22	792
61	NE 158TH ST	25 AV NE	CILE - LFP	1,611	22	3,938
62	NE 160TH ST	25 AV NE	CITY LIMIT - LFP	1,289	23	3,294
63	NE 163RD ST	25 AV NE	27 AV NE	634	22	1,550
64	NE 165TH ST	15 AV NE	27 AV NE	1,757	25	4,881
65	NE 166TH ST	15 AV NE	16 AV NE	763	22	1,865
66	NE 168TH ST	25 AV NE	27 AV NE	441	29	1,421
67	NE 169TH ST	15 AV NE	25 AV NE	2,441	25	6,781
68	NE 170TH ST	15 AV NE	25 AV NE	2,494	25	6,928
69	NE 171ST ST	15 AV NE	25 AV NE	1,999	24	5,331
70	NE 172ND ST	15 AV NE	22 AV NE	1,984	25	5,511
71	5TH AV NE	NE 175 ST	NE 185 ST	2,898	28	9,016
			Total:	55,976		159,793

2014 City of Shoreline BST Street Locations

ADDITIVE BID ITEM (Schedule B): This work will be included if budget allows

ITEM	STREET NAME	FROM LOCATION	TO LOCATION	LENGTH	WIDTH	SQUARE YARDS
1	NE 177TH ST	15 AV NE	SERPENTINE PL NE	1,423	27	4,269
2	NE 177TH ST	SERPENTINE PL NE	21 PL NE	427	21	996
3	NE 177TH ST	21 PL NE	22 AV NE	275	20	611
4	NE 177TH ST	22 AV NE	25 AV NE	967	21	2,256
5	NE SERPENTINE PL	NE 175 ST	NE 176 PL	756	22	1,848
6	NE SERPENTINE PL	NE 176 PL	NE 177 ST	320	24	853
					Total:	10,834