

CITY COUNCIL AGENDA ITEM
CITY OF SHORELINE, WASHINGTON

AGENDA TITLE:	Authorize the City Manager to Execute a Construction Contract with Doolittle Construction, LLC for Implementation of the 2015 Bituminous Surface Treatment (BST) Pavement Preservation Program
DEPARTMENT:	Public Works Department
PRESENTED BY:	Dan Repp, Public Works Utility and Operations Manager
ACTION:	<input type="checkbox"/> Ordinance <input type="checkbox"/> Resolution <input checked="" type="checkbox"/> Motion <input type="checkbox"/> Discussion <input type="checkbox"/> Public Hearing

PROBLEM/ISSUE STATEMENT:

The purpose of this report is to request the City Council to authorize the City Manager to enter into a contract with Doolittle Construction, LLC for \$612,956.40 for the 2015 Bituminous Surface Treatment (BST) pavement preservation program. Bids were opened on May 21, 2015 and there were two (2) bidders: Doolittle Construction, LLC, and Granite Construction. After a review of Doolittle Construction's bid, they were selected as the City's preferred provider.

RESOURCE/FINANCIAL IMPACT:

The City Council has authorized \$1,806,546 in the 2015 CIP Budget for the Annual Road Surface Maintenance Program. The BST program is part of the Road Surface Maintenance Program and the bid amount of \$612,956.40 is less than the available BST budget of \$633,000.

RECOMMENDATION

Staff recommends the City Council move to authorize the City Manager to execute a construction contract with Doolittle Construction, LLC for \$ \$612,956.40 for the 2015 BST pavement preservation program.

Approved By: City Manager **DT** City Attorney **MK**

INTRODUCTION

The Public Works Department is using Bituminous Surface Treatment (BST) as a maintenance strategy to protect the City's roadway infrastructure investments made over the past 15 years. BST application was successfully implemented in 2011 with successive BST projects in 2012, 2013, and 2014.

BACKGROUND

The City Council established that maintaining and preserving the City's streets is a high priority. The City selected using BST as a key maintenance strategy for the City's road system. The first application of BST in 2011 was focused in the northeast quadrant of the City (Echo Lake), followed by the North City and Ballinger neighborhoods in 2012, North City, Briarcrest, Ridgecrest and Echo Lake neighborhoods in 2013, and the Briarcrest and North City neighborhoods in 2014. The final cost for the 2014 BST Contract was \$617,737.89.

DISCUSSION

The 2015 BST project will primarily focus on roads in the North City and Ridgecrest neighborhoods plus some additional roads selected in the southwest quadrant of the City. Approximately 10.1 miles of roadway have been selected for BST treatment. Attachments A and B contain maps showing the location of the roads that will receive BST this year. Attachment C provides a detailed listing of each road segment to receive treatment.

Bids for the BST Program were opened on May 21, 2015 and there were two (2) bidders. Table 1 provides the results of the bid opening:

Table 1. 2015 Bituminous Surface Treatment Bid Results.

Contractor	Total Base Bid
Doolittle Construction, LLC	\$612,956.40
Granite Construction Company	\$713,317.00

Staff's project cost estimate for the BST Program was \$633,000. Staff has completed their review of mandatory bidder responsibility criteria on Doolittle Construction, LLC, including State Agency fiscal compliance. References were satisfactory regarding quality of construction and their history of managing budget, materials, and personnel for this type of project. Doolittle Construction performed the BST work for the City in 2011, 2012, 2013, and 2014. Doolittle Construction's performance on previous City BST contracts has been excellent. Doolittle Construction has consistently demonstrated an attention to detail, the ability to accommodate the needs of residents and flexibility during the construction process that benefits the City and results in a high quality product. The anticipated project schedule is provided in Table 2 below:

Table 2. Anticipated 2015 Bituminous Surface Treatment Project Schedule.

Milestone	Start	Finish	Comments
Notice to Proceed	n/a	June 26, 2015	
Contractor Mobilizes	July 13, 2015	July 17, 2015	Equipment and material staged on-site.
BST Application	July 15, 2015	September 4, 2015	Final completion date is weather dependent.
Final Acceptance	n/a	September 14, 2015	

FINANCIAL IMPACT

The City Council has authorized \$1,806,546 in the 2015 CIP Budget for the Annual Road Surface Maintenance Program. The BST program is part of the Road Surface Maintenance Program and the bid amount of \$612,956.40 is less than the available BST budget of \$633,000. Below is a breakdown of the Road Surface Maintenance Program cost expenditures and revenue sources (Roads Capital Fund) used to pay for the program:

EXPENDITURES

Staff Cost		\$50,000
BST Construction:		
<i>BST Construction Contract</i>	\$612,956	
BST Contract Contingency (10%)	<u>\$ 61,296</u>	
Total BST		\$674,252
2014/2015 Asphalt Grind/Patch/ Overlay Project		\$620,358
Pavement Management/Asset Inventory		\$72,963
2016 Overlay (design)		\$100,000
Meridian Overlay (design)		\$155,450
15 th Avenue Overlay (design)		\$99,900
Total Program Cost		\$1,772,923

REVENUE

Roads Capital Fund		\$1,806,546
Total Program Revenue		\$1,806,546
Program Balance (Revenue - Expenditures)		\$33,623

RECOMMENDATION

Staff recommends the City Council move to authorize the City Manager to execute a construction contract with Doolittle Construction, LLC for \$ \$612,956.40 for the 2015 BST pavement preservation program.

ATTACHMENTS

- Attachment A: 2015 Proposed BST Project Map East Region
- Attachment B: 2015 Proposed BST Project Map West Region
- Attachment C: Detailed List of 2015 BST Road Segments

Legend

Street to receive BST

Arterial, 3/8" BST

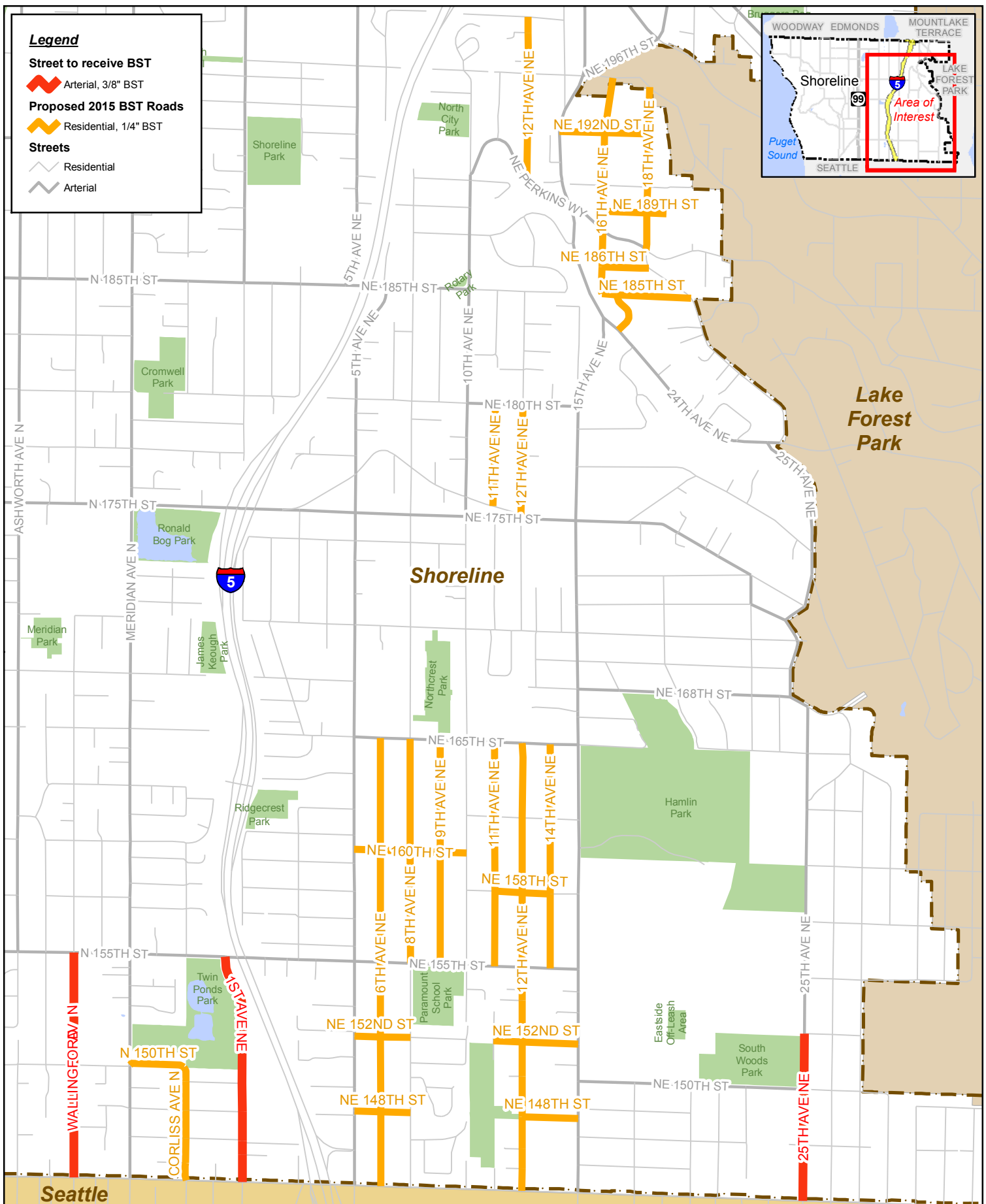
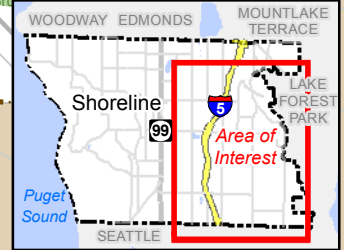
Proposed 2015 BST Roads

Residential, 1/4" BST

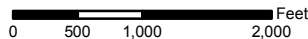
Streets

Residential

Arterial



2015 BST Contract
 East Region - Streets to Receive BST

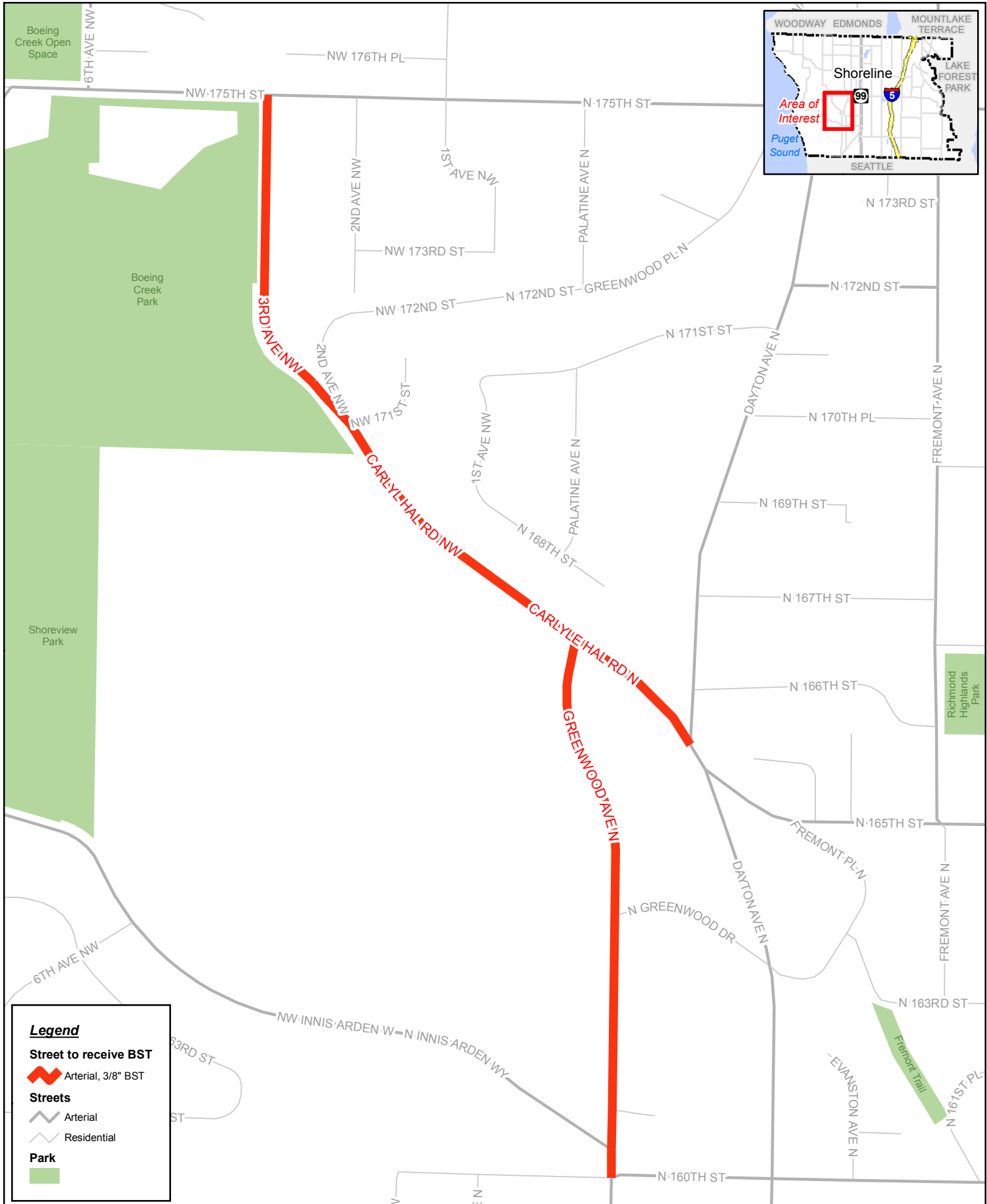
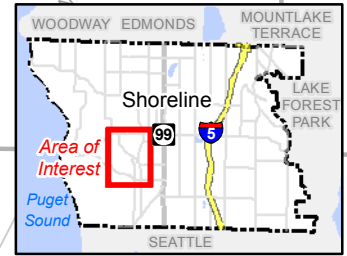


This map is not an official map. No warranty is made concerning the accuracy, currency, or completeness of data depicted on this map.



Date: 3/27/2015
 Author: lbiddison

Path: J:\GIS\Projects\Streets\BST\mxd\2015BSTContractAppendixE.mxd

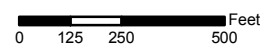


Legend

- Street to receive BST**
 Arterial, 3/8" BST
- Streets**
 Arterial
 Residential
- Park**



2015 BST Contract
 West Region - Streets to Receive BST



This map is not an official map. No warranty is made concerning the accuracy, currency, or completeness of data depicted on this map.



Date: 3/27/2015
 Author: lbiddison

Path: J:\GIS\Projects\Streets\BST\mxd\2015BSTContractAppendixW.mxd

ATTACHMENT C

2015 City of Shoreline
1/4" No. 10 Bituminous Surface Treatment Locations

ITEM	STREET NAME	FROM LOCATION	TO LOCATION	LENGTH	WIDTH	SQUARE YARDS
1	6TH AV NE	NE 145 ST	NE 148 ST	883	22	2,158
2	6TH AV NE	NE 148 ST	NE 152 ST	884	22	2,161
3	6TH AV NE	NE 152 ST	NE 155 ST	883	22	2,158
4	6TH AV NE	NE 155 ST	NE 160 ST	1,327	32	4,718
5	6TH AV NE	NE 160 ST	NE 165 ST	1,328	28	4,132
6	8TH AV NE	NE 155 ST	NE 160 ST	1,327	32	4,718
7	8TH AV NE	NE 160 ST	NE 165 ST	1,327	32	4,718
8	9TH AV NE	NE 155 ST	NE 160 ST	1,327	32	4,718
9	9TH AV NE	NE 160 ST	NE 165 ST	1,326	32	4,715
10	11TH AV NE	NE 155 ST	NE 158 ST	889	22	2,173
11	11TH AV NE	NE 158 ST	NE 162 ST	882	22	2,156
12	11TH AV NE	NE 162 ST	NE 165 ST	881	27	2,643
13	11TH AV NE	NE SERPENTNE PL	NE 180 ST	1,216	26	3,513
14	12TH AV NE	NE 145 ST	NE 146 ST	263	19	555
15	12TH AV NE	NE 146 ST	NE 147 ST	235	20	522
16	12TH AV NE	NE 147 ST	NE 148 ST	381	22	931
17	12TH AV NE	NE 148 ST	NE 150 CT	478	20	1,062
18	12TH AV NE	NE 150 CT	NE 152 ST	405	22	990
19	12TH AV NE	NE 152 ST	NE 153 ST	492	20	1,093
20	12TH AV NE	NE 153 ST	NE 154 ST	126	22	308
21	12TH AV NE	NE 154 ST	NE 155 ST	265	20	589
22	12TH AV NE	NE 155 ST	NE 158 ST	889	22	2,173
23	12TH AV NE	NE 158 ST	NE 162 ST	879	26	2,539

ITEM	STREET NAME	FROM LOCATION	TO LOCATION	LENGTH	WIDTH	SQUARE YARDS
24	12TH AV NE	NE 162 ST	NE 165 ST	883	26	2,551
25	12TH AV NE	NE 175 ST	NE 177 ST	745	28	2,318
26	12TH AV NE	NE 177 ST	NE 180ST	598	30	1,993
27	12TH AV NE	NE PERKINS WAY	NE 195 ST	1,280	24	3,413
28	12TH AV NE	NE 195 ST	NE 195 CT	139	24	371
29	12TH AV NE	NE 195 CT	NE 197 CT	343	24	915
30	12TH AV NE	NE 195 CT	NE 198 ST	189	24	504
31	14TH AV NE	NE 155 ST	NE 158 ST	890	22	2,176
32	14TH AV NE	NE 158 ST	NE 162 ST	877	22	2,144
33	14TH AV NE	NE 162 ST	NE 165 ST	883	22	2,158
34	16TH AV NE	24 AV NE	NE 185 ST	530	26	1,531
35	16TH AV NE	NE 185 ST	NE 186 ST	321	20	713
36	16TH AV NE	NE 186 ST	NE PERKINS WAY	431	20	958
37	16TH AV NE	PERKINS WAY NE	NE 189 ST	229	23	585
38	16TH AV NE	NE 189 ST	NE 190 ST	306	23	782
39	16TH AV NE	NE 190 ST	NE 192 ST	627	24	1,672
40	16TH AV NE	NE 192 ST	NE 195 ST	665	23	1,699
41	18TH AV NE	NE PERKINS WAY	NE 189 ST	431	22	1,054
42	18TH AV NE	NE 189 ST	NE 190 ST	306	22	748
43	18TH AV NE	NE 190 ST	NE 192 ST	628	22	1,535
44	18TH AV NE	NE 192 ST	LAGO PL NE	556	22	1,359
45	NE 148TH ST	5 AV NE	6 AV NE	309	23	790
46	NE 148TH ST	6 AV NE	8 AV NE	352	22	860
47	NE 148TH ST	12 AV NE	15 AV NE	660	22	1,613
48	N 150TH ST	MERIDIAN AV N	CORLISS AV N	670	28	2,084
49	NE 152ND ST	5 AV NE	6 AV NE	308	20	684

ITEM	STREET NAME	FROM LOCATION	TO LOCATION	LENGTH	WIDTH	SQUARE YARDS
50	NE 152ND ST	6 AV NE	8 AV NE	352	20	782
51	NE 152ND ST	ENDROUTE	12 AV NE	329	21	768
52	NE 152ND ST	12 AV NE	15 AV NE	661	21	1,542
53	NE 158TH ST	11 AV NE	12 AV NE	327	30	1,090
54	NE 158TH ST	12 AV NE	14 AV NE	331	23	846
55	NE 160TH ST	5 AV NE	6 AV NE	309	32	1,099
56	NE 160TH ST	6 AV NE	8 AV NE	354	32	1,259
57	NE 160TH ST	8 AV NE	9 AV NE	355	32	1,262
58	NE 160TH ST	9 AV NE	10 AV NE	309	32	1,099
59	NE 185TH ST	16 AV NE	25 AV NE	891	20	1,980
60	NE 186TH ST	16 AV NE	18 AV NE	598	17	1,130
61	NE 189TH ST	16 AV NE	18 AV NE	518	16	921
62	NE 189TH ST	18 AV NE	CDSE	228	20	507
63	NE 192ND ST	15 AV NE	16 AV NE	533	20	1,184
64	NE 192ND ST	16 AV NE	18 AV NE	518	24	1,381
65	CORLISS AV N	N 145 ST	N 146 ST	206	24	549
66	CORLISS AV N	N 146 ST	N 147 ST	291	24	776
67	CORLISS AV N	N 147 ST	N 148 ST	333	24	888
68	CORLISS AV N	N 148 ST	N 149 ST	334	25	928
69	CORLISS AV N	N 149 ST	N 150 ST	195	28	607
				Total Square Yards:		113,254

2015 City of Shoreline
3/8" No. 10 Bituminous Surface Treatment Locations

ITEM	STREET NAME	FROM LOCATION	TO LOCATION	LENGTH	WIDTH	SQUARE YARDS
1	1ST AV NE	NE 145 ST	NE 147 ST	483	28	1,503
2	1ST AV NE	NE 147 ST	NE 148 ST	347	32	1,234
3	1ST AV NE	NE 148 ST	NE 149 ST	338	28	1,052
4	1ST AV NE	NE 149 ST	NE 155 ST	1,542	29	4,969
5	25TH AV NE	NE 145 ST	NE 147 ST	661	30	2,203
6	25TH AV NE	NE 147 ST	NE 150 ST	659	30	2,197
7	25TH AV NE	NE 150 ST	NE 153 ST	660	30	2,200
8	3RD AV NW	NW 175 ST	NW CARLYLE RD	881	21	2,056
9	CARLYLE HALL RD NW	3 AV NW	2 AV N	427	30	1,423
10	CARLYLE HALL RD NW	2 AV NW	NW 171 ST	58	21	135
11	CARLYLE HALL RD NW N	NW 171 ST	GREENWOOD AV N	1,140	22	2,787
12	CARLYLE HALL RD N	GREENWOOD AV N	DAYTON AV N	592	22	1,447
13	GREENWOOD AV N	N 160 ST	N INNIS ARDEN WAY	95	22	232
14	GREENWOOD AV N	N INNIS ARDEN WAY	N GREENWOOD DR	888	22	2,171
15	GREENWOOD AV N	N GREENWOOD DR	CARLYLE HALL RD	1,063	32	3,780
16	WALLINGFORD AV N	N 145 ST	N 147 ST	600	21	1,400
17	WALLINGFORD AV N	N 147 ST	N 150 ST	729	20	1,620
18	WALLINGFORD AV N	N 150 ST	N 155 ST	1,331	22	3,254
				Total Square Yards:		35,661