

CITY COUNCIL AGENDA ITEM
CITY OF SHORELINE, WASHINGTON

AGENDA TITLE:	Authorize the City Manager to Enter Into an Agreement with the Brickman Group, LTD, LLC for Right-of-Way Landscape Services
DEPARTMENT:	Public Works Department
PRESENTED BY:	Randy Witt, Public Works Director Lance Newkirk, Public Works Utilities & Operations Manager
ACTION:	<input type="checkbox"/> Ordinance <input type="checkbox"/> Resolution <input checked="" type="checkbox"/> Motion <input type="checkbox"/> Discussion <input type="checkbox"/> Public Hearing

PROBLEM/ISSUE STATEMENT:

The City uses contract services to perform right-of-way (ROW) landscaping maintenance within the City of Shoreline. On August 31, 2015, the City's prior contractor, Landcare USA, canceled their contract with the City for this service. Thus, a new contract bid was required. The City received four (4) sealed bids for this contract. The low bidder, Earthscapes, Inc., was deemed non-responsive for submitting incomplete bid documents and not possessing a current Washington State contractor's license at the time of bid submittal. The City then moved to review the next apparent low bidder, The Brickman Group, LTD, LLC. After bid review and reference checks, The Brickman Group, LTD, LLC was deemed the apparent low responsive bidder. The new contract will provide ROW landscaping services to the City of Shoreline for the remainder of 2016 and includes the option to renew for three (3) additional one (1) year terms.

RESOURCE/FINANCIAL IMPACT:

The low responsive bid received from The Brickman Group, LTD, LLC provides the City of Shoreline with annual ROW landscaping services in the amount of \$180,720, which includes \$169,760 for the Base Bid and \$12,960 for the Bid Additive. For 2016, the cost for the remainder of the year will be \$157,233.50. Funding for ROW landscape services is provided for within the 2016 Streets Operations Repairs and Maintenance and Surface Water Repairs and Maintenance budgets.

RECOMMENDATION

Staff recommends that Council authorize the City Manager to execute an agreement for ROW Landscape Services with The Brickman Group, LTD, LLC in the amount of \$157,233.50 for the remainder of 2016 and \$180,720.00 per year for up to three (3) additional one (1) year terms as negotiated and provided for in future budgets.

Approved By: City Manager **DT** City Attorney **MK**

BACKGROUND

Each year, the City uses contract services to perform ROW landscaping within the City of Shoreline. On August 31, 2015, the City's prior contractor, Landcare USA, canceled their contract with the City for this service. Thus, a new contract bid was required.

The ROW landscaping contract includes activities such as mowing, weed removal, litter removal, pruning, trimming, edging, and sweeping and blowing of parking strips, tree wells, and sidewalks on approximately 60 curb miles of arterial and collector streets. The contract requires that vegetation along sidewalks be trimmed back flush with back of sidewalk and to a height 7 ½ feet above walk ways. The contract also includes:

- Mowing, litter removal, weed removal, pruning, line trimming and removal of cut grasses from Beautification Areas and Traffic Circles;
- Mechanical weeding, pruning, litter removal, and basic maintenance of Surface Water Bio Retention Facilities located along the Aurora Avenue N corridor; and
- Spring start up, monthly inspections, basic maintenance, and winterization of City irrigation systems.

DISCUSSION

The ROW Landscaping Services contract has two (2) schedules: Base Bid Items (Schedule A), which provides the same level of service as the previous contract (this work is denoted by location and frequency in six (6) tables in Attachment A to this staff report), and one Additive Bid Item (Schedule B), which would add one additional maintenance rotation on the street locations noted in Table 4 in Attachment A. The added rotation would be completed during the peak growing season and provide a more appropriate level of service at these locations. The contract is also written to provide the City flexibility on how much funding to spend, if any, for chemical vegetation control practices. The following information summarizes the locations of where work will be performed:

Schedule A - Base Bid:

- Aurora Avenue N and adjacent street locations (Table 1)
- Bio-retention and subsurface water features (Table 2)
- Beautification areas - City gateways and planter sites (Table 3)
- Street locations - arterial sidewalks, grass and vegetation strips (Table 4)
- Traffic circle locations (Table 5)
- Irrigation system locations (Table 6)

Schedule B – Additive Bid:

- Would require the contractor to complete one additional maintenance rotation of all Street Locations (Table 4) during the peak growing season.

As noted above, Attachment A contains the details for all scheduled work (Tables 1-6), including the location of each area to be maintained and the required frequency of maintenance. Attachment B provides a map of where this work would occur.

Bidding Process

The City received four (4) sealed bids for this contract. The low bidder, Earthscapes, Inc., was deemed non-responsive for submitting incomplete bid documents and not possessing a current Washington State contractor's license at the time of bid submittal. The City then moved to review the next apparent low bidder, The Brickman Group, LTD, LLC. After bid review and reference checks, The Brickman Group, LTD, LLC was deemed the apparent low responsive bidder with an annual bid amount of \$180,720. The bid results are presented in the table below:

	Earthscapes NW Inc.	The Brickman Group, LTD. LLC	Landcare USA, LLC	Total Landscape Corporation
Schedule A - Base Bid	\$160,875.00	\$167,760.00	\$218,474.00	\$276,250.00
Schedule B - Additive	\$19,600.00	\$12,960.00	\$31,572.00	\$82,935.00
Total (Schedule A + B)	\$180,475.00	\$180,720.00	\$250,046.00	\$359,185.00

This contract has an option for three (3) additional one (1) year terms beyond 2016. Each year the contract amount may change based on contractor labor rates, location changes, scope changes, or additive work.

FINANCIAL IMPACT

The low responsive bid received from The Brickman Group, LTD, LLC provides the City of Shoreline with annual ROW landscaping services in the amount of \$180,720, which includes \$169,760 for the Base Bid and \$12,960 for the Bid Additive. For 2016, the cost for the remainder of the year will be \$157,233.50, as shown below. Funding for ROW landscape services is provided for within the 2016 Streets Operations Repairs and Maintenance and Surface Water Repairs and Maintenance budgets.

2016 EXPENDITURES

Right of Way Landscape Services (Schedule A): \$144,273.50
Right of Way Landscape Services (Schedule B): \$12,960.00

Total Project Cost	\$157,233.50
--------------------	--------------

2016 REVENUE

Street Operations Repairs and Maintenance \$138,360.50
Surface Water Repairs and Maintenance \$18,873.00

Total Revenue	\$157,233.50
---------------	--------------

ANTICIPATED ANNUAL EXPENDITURES FOR 2017, 2018 AND 2019

Right of Way Landscape Services (Schedule A): \$167,760.00
Right of Way Landscape Services (Schedule B): \$12,960.00

Total Project Cost	\$180,720.00
--------------------	--------------

ANTICIPATED ANNUAL REVENUE FOR 2017, 2018 AND 2019

Street Operations Repairs and Maintenance	\$155,556.00
Surface Water Repairs and Maintenance	\$25,164.00

Total Revenue	\$180,720.00
---------------	--------------

RECOMMENDATION

Staff recommends that Council authorize the City Manager to execute an agreement for ROW Landscape Services with The Brickman Group, LTD, LLC in the amount of \$157,233.50 for the remainder of 2016 and \$180,720.00 per year for up to three (3) additional one (1) year terms as negotiated and provided for in future budgets.

ATTACHMENTS

Attachment A: Right of Way Maintenance Locations and Frequency - Tables
Attachment B: Right of Way Maintenance Locations and Frequency – Map

Schedule A – Detailed Annual Cost
Table 1 - Aurora Ave N and Adjacent Street Locations

ITEM #	STREET	LOCATION	FREQUENCY	SCHEDULE	ANNUAL COST (Figures)
1	Aurora Ave N	N 145th St to N 155th St All Planter beds on East, Center, and West side including all c-curb extensions	Bi-Monthly	Schedule A	
2	Aurora Ave N	N 155th St to N 165th St All Planter beds on East, Center, and West side including all c-curb extensions	Bi-Monthly	Schedule A	
3	Aurora Ave N	N 165th St to N 175th St All Planter beds on East, Center, and West side including all c-curb extensions	Bi-Monthly	Schedule A	
4	Aurora Ave N	N 175th St to N 185th St All Planter beds on East, Center, and West side including all c-curb extensions	Bi-Monthly	Schedule A	
5	Aurora Ave N	N 185th St to 19290 Aurora Ave N (YMCA) All Planter beds on East, Center, and West side including all c-curb extensions	Bi-Monthly	Schedule A	
6	N 152 nd St	Planter Beds on the North and South sides apx. 325' to the East	Bi-Monthly	Schedule A	
7	N 155 th St	Planter Beds on the North and South sides apx. 200' to the East	Bi-Monthly	Schedule A	
8	N 155 th St	Planter Beds on the North and South sides and clean center island apx 530' west to Westminster Way N	Bi-Monthly	Schedule A	
9	N 160 th St	Sidewalk & right of way on the North and South sides apx 165' to East to InterUrban Trail	Bi-Monthly	Schedule A	
10	N 160 th St	Planter Beds on the North and South sides apx 550' to the West	Bi-Monthly	Schedule A	
11	N 165 th St	Planter Beds on the North and South side apx 270' East to InterUrban Trail	Bi-Monthly	Schedule A	
12	N 167 th St	Planter Beds on the North and South sides apx 330' east to Interurban Trail	Bi-Monthly	Schedule A	
13	N 170 th St	Planter Beds and Right of Way on North and South sides apx. 340' to the West	Bi-Monthly	Schedule A	
14	Ronald Pl N	Planter Beds on West side apx. 188' to Aurora Rents North Gate	Bi-Monthly	Schedule A	
15	N 175 th St	Planter Beds on North, Center and South side apx 800' to the East (includes bed behind sidewalk in front of Grease Monkey)	Bi-Monthly	Schedule A	
16	N 175 th St	Planter Beds on North, Center and South side apx. 300' to the West	Bi-Monthly	Schedule A	
17	N 182 nd St	Planter Beds on North side apx. 200' to the West	Bi-Monthly	Schedule A	

Schedule A – Detailed Annual Cost
Table 1 - Aurora Ave N and Adjacent Street Locations (Cont.)

ITEM #	STREET	LOCATION	FREQUENCY	SCHEDULE	ANNUAL COST (Figures)
18	N 185 th St	Planter Beds & Behind Sidewalk Planter Bed (140' x 40') on the south side, center c-curbing, and planter Beds on the North side apx. 250' to the West	Bi-Monthly	Schedule A	
19	N 185 th St	Planter Beds on North and South Side, and c-curbing apx. 595' east to Stone Ave N	Bi-Monthly	Schedule A	
20	Firlands Way N	Planter Beds on the Southside & Center islands apx. 80' to the Northwest	Bi-Monthly	Schedule A	
21	N 192 nd St	SW Corner (Planter Beds Area 140' X 140' - Education Center)	Bi-Monthly	Schedule A	
22	N 192 nd St	Aurora Ave N West to Firlands Way N, North and South Side of Street	Bi-Monthly	Schedule A	
23	N 192 nd St	Planter beds on North and South sides, center island, and c-curbing apx. 500' East to Interurban Trail	Bi-Monthly	Schedule A	
24	Westminster Way N	Aurora Ave N to N 155 th , Planter beds on East and West sides	Bi-Monthly	Schedule A	
Total (1-24)					\$

Schedule A – Detailed Annual Cost
Table 2 - Bioretention and Surface Water Features
Aurora Ave N: West Side Measured South Bound

ITEM #	ADJACENT ADDRESS	LOCATION DETAILS	FREQUENCY	SCHEDULE	TYPE	ANNUAL COST (Figure s)
1	18821 (Park & Ride)	225' South of N 192nd St	Bi-Monthly	Schedule A	Bioretention w/conc. Dams	
2	18821 (Park & Ride)	375' South of N 192nd St	Bi-Monthly	Schedule A	Bioretention w/conc. Dams	
3	18821 (Park & Ride)	520' South of N 192nd St	Bi-Monthly	Schedule A	Filtterra	
4	18821 (Park & Ride)	645' South of N 192nd St	Bi-Monthly	Schedule A	Filtterra	
5	18815 (Sea. Home Appl.)	850' South of N 192nd St	Bi-Monthly	Schedule A	Bioretention w/conc. Dams	
6	18811 (Benjamin Moore)	935' South of N 192nd St	Bi-Monthly	Schedule A	Filtterra	
7	18551 (Macpherson Bldg.)	1125' South of N 192nd St	Bi-Monthly	Schedule A	Filtterra	
8	18325 (Fred Meyer)	475' South of N 185th St	Bi-Monthly	Schedule A	Bioretention	
9	18217 (Auto Zone)	605' South of N 185th St	Bi-Monthly	Schedule A	Bioretention (Rip rap rock pit)	
10	18217 (Auto Zone)	670' South of N 185th St	Bi-Monthly	Schedule A	Bioretention (Rip rap rock pit)	
11	18041 (Darrell's Tav.)	85' South of N 182nd St	Bi-Monthly	Schedule A	Bioretention	
12	18025 (O'Reilly Auto)	175' South of N 182nd St	Bi-Monthly	Schedule A	Bioretention	
13	18005 (Highland Ice)	340' South of N 182nd St	Bi-Monthly	Schedule A	Bioretention	
14	17935 (Deseret Ind.)	545' South of N 182nd St	Bi-Monthly	Schedule A	Bioretention	
15	17839 (Ronald Church)	665' South of N 182nd St	Bi-Monthly	Schedule A	Bioretention	

**Schedule A – Detailed Annual Cost
Table 2 - Bioretention and Surface Water Features (Cont.)**

ITEM #	ADJACENT ADDRESS	LOCATION DETAILS	FREQUENCY	SCHEDULE	TYPE	COST
16	17839 (Ronald Church)	745 South of N 182nd St	Bi-Monthly	Schedule A	Bioretention	
17	17545 (Doug's Cadillac)	875' South of N 182nd St	Bi-Monthly	Schedule A	Bioretention	
18	17545 (Doug's Cadillac)	995' South of N 182nd St	Bi-Monthly	Schedule A	Bioretention	
19	17545 (Doug's Cadillac)	1100' South of N 182nd St	Bi-Monthly	Schedule A	Bioretention	
20	17545 (Doug's Cadillac)	1250' South of N 182nd St	Bi-Monthly	Schedule A	Bioretention	
21	17525 (Fire Station 61)	1460' South of N 182nd St	Bi-Monthly	Schedule A	Bioretention	
22	17505 (Valero Gas)	1665' South of N 182nd St	Bi-Monthly	Schedule A	Bioretention	
23	17255 (Shell Gas)	100' South of N 175th St	Bi-Monthly	Schedule A	Bioretention	
24	17225 (Carter Subaru)	295' South of N 175th St	Bi-Monthly	Schedule A	Bioretention	
25	17219 (Carter Tire&Serv.)	585' South of N 175th St	Bi-Monthly	Schedule A	Bioretention	
26	17203 (under const.)	645' South of N 175th St	Bi-Monthly	Schedule A	Bioretention	
27	17001 (Chuck O. Kia)	1160' South of N 175th St	Bi-Monthly	Schedule A	Bioretention	
28	17001 (Chuck O. Kia)	1225' South of N 175th St	Bi-Monthly	Schedule A	Bioretention	
29	16731 (M Motors)	410' South of N 170th St	Bi-Monthly	Schedule A	Bioretention	
30	16715 (THS Bldg.)	520' South of N 170th St	Bi-Monthly	Schedule A	Bioretention	
31	16503 (UHAUL)	1075' South of N 170th St	Bi-Monthly	Schedule A	Bioretention	

Aurora Ave N: East Side Measured North Bound

32	16526 (Shoreline motel)	300' North of N 165th St	Bi-Monthly	Schedule A	Bioretention	
33	16708 (Drift On Inn)	85' North of N 167th St	Bi-Monthly	Schedule A	Bioretention	
34	16900 (Vacant lot)	560' North of N 167th St	Bi-Monthly	Schedule A	Bioretention	
35	17010 (Cash Amer. Pawn)	780' North of N 167th St	Bi-Monthly	Schedule A	Bioretention	

**Schedule A – Detailed Annual Cost
Table 2 - Bioretention and Surface Water Features (Cont.)**

ITEM #	ADJACENT ADDRESS	LOCATION DETAILS	FREQUENCY	SCHEDULE	TYPE	COST
36	17212 (Garden Center)	1280' North of N 167th St	Bi-Monthly	Schedule A	Bioretention	
37	17212 (Garden Center)	1320' North of N 167th St	Bi-Monthly	Schedule A	Bioretention	
38	17212 (Garden Center)	1410' North of N 167th St	Bi-Monthly	Schedule A	Bioretention	
39	17212 (Garden Center)	1440' North of N 167th St	Bi-Monthly	Schedule A	Bioretention	
40	17460 (Aurora Rents)	1590' North of N 167th St	Bi-Monthly	Schedule A	Bioretention	
41	17460 (Aurora Rents)	1620 North of N 167th St	Bi-Monthly	Schedule A	Bioretention	
42	17460 (Aurora Rents)	1750' North of N 167th St	Bi-Monthly	Schedule A	Bioretention	
43	17460 (Aurora Rents)	1825' North of N 167th St	Bi-Monthly	Schedule A	Bioretention	
44	18528 (Sky Nursery)	440' North of N 185th St	Bi-Monthly	Schedule A	Filtterra	
45	18528 (Sky Nursery)	640' North of N 185th St	Bi-Monthly	Schedule A	Filtterra	
46	18528 (Sky Nursery)	780' North of N 185th St	Bi-Monthly	Schedule A	Filtterra	
47	18820 (Anderson Bldg.)	915' North of N 185th St	Bi-Monthly	Schedule A	Bioretention	
48	18820 (Anderson Bldg.)	1225' North of N 185th St	Bi-Monthly	Schedule A	Filtterra	
49	19022 (Rat City Roller)	1345' North of N 185th St	Bi-Monthly	Schedule A	Bioretention conc. Dams	
50	19022 (Rat City Roller)	1475' North of N 185th St	Bi-Monthly	Schedule A	Filtterra	
51	19022 (Rat City Roller)	1575' North of N 185th St	Bi-Monthly	Schedule A	Bioretention w/conc. Dams	

N 185TH St: East of Aurora Ave N

52	1108 N 185th St (Dunn Lumber)	230' East of Aurora Ave N - north side	Bi-Monthly	Schedule A	Filtterra	
53	1108 N 185th St (Dunn Lumber)	210' East of Aurora Ave N - north side	Bi-Monthly	Schedule A	Filtterra	

**Schedule A – Detailed Annual Cost
Table 2 - Bioretention and Surface Water Features (Cont.)**

ITEM #	ADJACENT ADDRESS	LOCATION DETAILS	FREQUENCY	SCHEDULE	TYPE	COST
54	1108 N 185th St (Dunn Lumber)	160' East of Aurora Ave N - north side	Bi-Monthly	Schedule A	Filtrerra	
55	1133 N 185th St (Bartell)	135' East of Aurora Ave N - south side	Bi-Monthly	Schedule A	Filtrerra	
56	1133 N 185th St (Bartell)	215' East of Aurora Ave N - south side	Bi-Monthly	Schedule A	Filtrerra	
57	1133 N 185th St (Bartell)	225' East of Aurora Ave N - south side	Bi-Monthly	Schedule A	Filtrerra	

N 185TH St: West of Aurora Ave N

58	18413 Aurora Ave N	150' West of Aurora Ave N - south side	Bi-Monthly	Schedule A	Filtrerra	
59	18413 Aurora Ave N	40' West of Aurora Ave N - south side	Bi-Monthly	Schedule A	Filtrerra	
Total (1-59)						

**Schedule A – Detailed Annual Cost
Table 3 - Beautification Areas**

ITEM #	LOCATION	FREQUENCY	SCHEDULE	Cost
1	Meridian Ave N & N 205th St (Southwest Corner)	Monthly	Schedule A	
2	NE 195 th St & I-5 (West & East ends of Pedestrian Overpass)	Monthly	Schedule A	
3	NE 178 th St & 24 th Ave NE (Southeast Corner)	Monthly	Schedule A	
4	15th Ave NE from NE 175th St to 15th PI NE	Monthly	Schedule A	
5	N/NE 175th St: Planter beds North side, South side, and Center Islands from 3rd Ave NE to Meridian Ave N. Include grass areas behind sidewalk and green hand rail on north side of street.	Monthly	Schedule A	
Total (1-5)				\$

Schedule A – Detailed Annual Cost
Table 4 - Street Locations and Maintenance Frequency

ITEM #	STREET	LOCATION	FREQUENCY	SCHEDULE	Cost
1	25 th Ave NE	NE 150 th St to N 168 th St	3 times per year	Schedule A	
2	15 th Ave NE	NE 145 th St to NE 175 th St	3 times per year	Schedule A	
3	15 th Ave NE	15th PI NE to NE Ballinger Way	3 times per year	Schedule A	
4	Ballinger Ave NE	25 th Ave NE to 15 th Ave NE	3 times per year	Schedule A	
5	5 th Ave NE	I-5 ON/OFF Ramp @ NE 145 th St	3 times per year	Schedule A	
6	5 th Ave NE	NE 145 th St to NE 175 th St	3 times per year	Schedule A	
7	Meridian Ave N	N 145 th St to N 205 th St	3 times per year	Schedule A	
8	Freemont Ave N	N 165 th St to N 175 th St	3 times per year	Schedule A	
9	Dayton Ave N	N 172 nd St to Carlyle Hall Rd N	3 times per year	Schedule A	
10	Dayton Ave N	St. Luke PI to N 172 nd St	3 times per year	Schedule A	
11	N 172 nd St	Dayton Ave N to Freemont Ave N	3 times per year	Schedule A	
12	Greenwood Ave N	N 145 th St to N 155 th St (West Side) to fence	3 times per year	Schedule A	
13	3 rd Ave NW	NW 176 th St to NW 205 th St	3 times per year	Schedule A	
14	8 th Ave NW	NW Richmond Beach Road	3 times per year	Schedule A	
15	20 th Ave NW	NW 195 th St to NW 202 nd St	3 times per year	Schedule A	
16	N 145 th St	Bothell Way to Greenwood (North Side)	3 times per year	Schedule A	
17	NE / N 155 th St	15 th Ave NE to Aurora Ave N	3 times per year	Schedule A	
18	N 160 th St	Aurora Ave N to Dayton Ave N	3 times per year	Schedule A	
19	I-5 On/Off Ramps at N/NE 175 th St	I-5 ON/OFF Ramps - both the east & west sides of the I-5 freeway On/Off Ramps including entire hill sides (grass areas).	3 times per year	Schedule A	
20	NE 175 th St	15 th Ave NE to 3 rd Ave NE	3 times per year	Schedule A	
21	N 175 th St	Meridian Ave N to Fremont Ave N	3 times per year	Schedule A	
22	NE / N 185 th St	10 th Ave NE to Fremont Ave N	3 times per year	Schedule A	
23	N/NW Richmond Beach Road	Fremont Ave N to 15 th Ave NW	3 times per year	Schedule A	
24	NW 195 th St	15 th Ave NW to 20 th Ave NW	3 times per year	Schedule A	
25	NW 196 th St	20 th Ave NW to 24 th Ave NW	3 times per year	Schedule A	
26	N 200 th St	Meridian Ave N to Aurora Ave N	3 times per year	Schedule A	
27	Westminster Ave N	N 145 th St to Aurora Ave N	3 times per year	Schedule A	
28	N / NW 205 th St	Meridian Ave N to 3 rd Ave NW	3 times per year	Schedule A	
Total (1-28)					\$

**Schedule A – Detailed Annual Cost
Table 5 - Traffic Circle Locations**

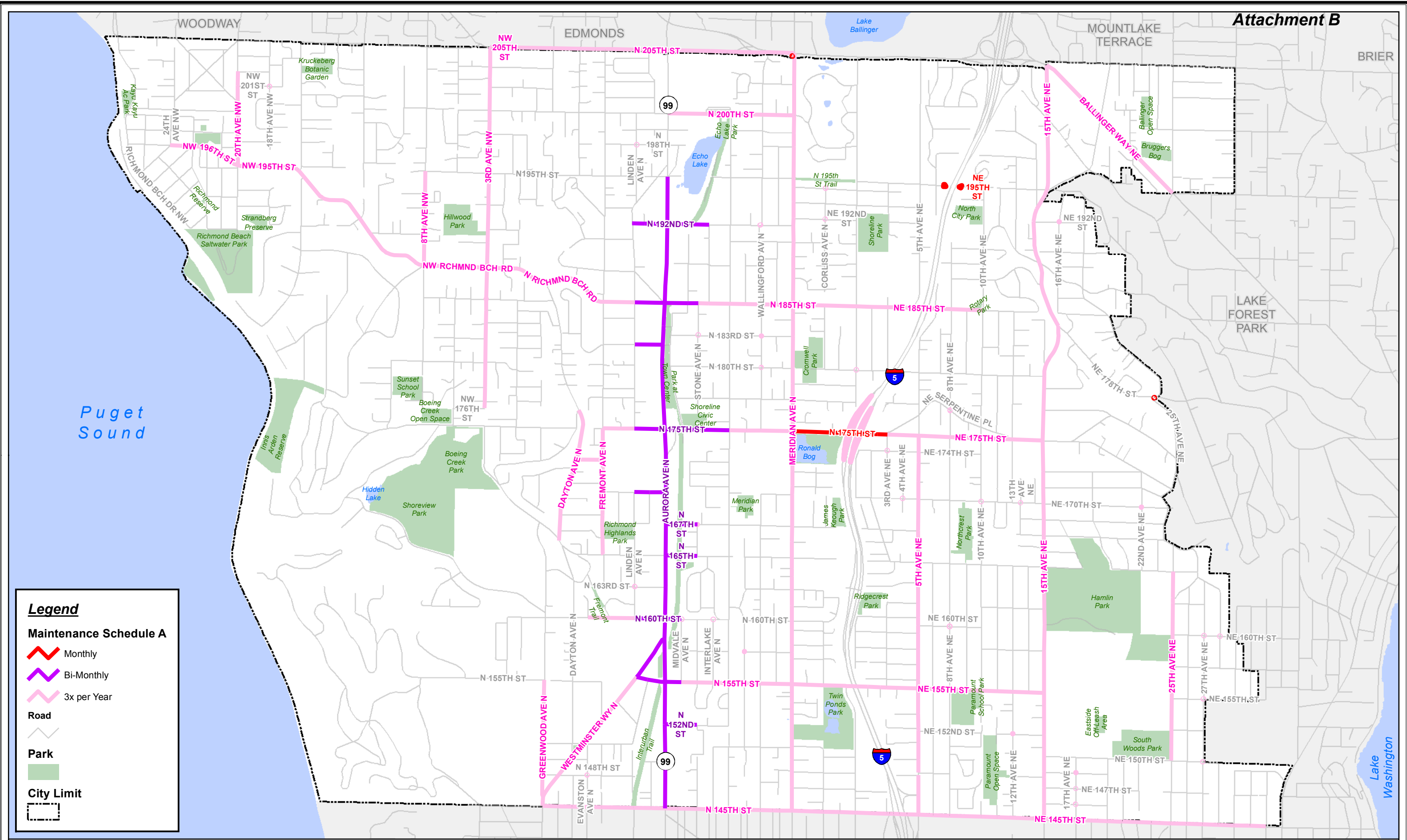
ITEM #	LOCATION	FREQUENCY	SCHEDULE	Cost
1	10 th Ave NE / NE 170 th St	3 times per year	Schedule A	
2	12 th Ave NE / NE 152 nd St	3 times per year	Schedule A	
3	12 th PI NE / NE 170 th St	3 times per year	Schedule A	
4	16 th Ave NE / NE 192 nd St	3 times per year	Schedule A	
5	17 th Ave NE / NE 146 th St	3 times per year	Schedule A	
6	17 th Ave NE / NE 147 th St	3 times per year	Schedule A	
7	17 th Ave NE / NE 148 th St	3 times per year	Schedule A	
8	18 th Ave NW / NW 201 st St	3 times per year	Schedule A	
9	1 st Ave NE / NE 180 th St	3 times per year	Schedule A	
10	22 nd Ave NE / NE 170 th St	3 times per year	Schedule A	
11	27 th Ave NE / NE 150 th St	3 times per year	Schedule A	
12	27 th Ave NE / NE 155 th St	3 times per year	Schedule A	
13	27 th Ave NE / NE 160 th St	3 times per year	Schedule A	
14	28 th Ave NE / NE 160 th St	3 times per year	Schedule A	
15	3 rd Ave NE / NE 174 th St	3 times per year	Schedule A	
16	3 rd Ave NW / NW 185 th St	3 times per year	Schedule A	
17	4 th Ave NE / NE 170 th St	3 times per year	Schedule A	
18	8 th Ave NE / NE 160 th St	3 times per year	Schedule A	
19	8 th Ave NE / NE Serpentine PI	3 times per year	Schedule A	
20	Corliss Ave N / N 192 nd St	3 times per year	Schedule A	
21	Corliss Ave N / N 194 th St	3 times per year	Schedule A	
22	Densmore Ave N / N 157 th St	3 times per year	Schedule A	
23	Evanston Ave N / N 148 th St	3 times per year	Schedule A	
24	Interlake Ave N / N 160 th St	3 times per year	Schedule A	
25	Linden Ave N / N 163 rd St	3 times per year	Schedule A	
26	Linden Ave NW / NW 198 th St	3 times per year	Schedule A	
27	Midvale Ave N / N 160 th St	3 times per year	Schedule A	
28	Stone Ave N / N 167 th St	3 times per year	Schedule A	
29	Stone Ave N / N 183 rd St	3 times per year	Schedule A	
30	Wallingford Ave N / N 180 th St	3 times per year	Schedule A	
31	Wallingford Ave N / N 183 rd St	3 times per year	Schedule A	
32	Wallingford Ave N / N 192 nd St	3 times per year	Schedule A	
Total (1-32)				\$

Schedule A – Detailed Annual Cost
Table 6 - Irrigation System Locations and Work Items

AREA 1: Aurora Ave N (N 145th St to N 165th St)						
ITEM #	Work Item	Street Segment	Irrigation Type	# Zones	Location	COST
1	Controller, Double-check, Meter	Aurora Ave N / N 152nd St	Spray Heads	15	Aurora Ave N / N 152nd St, SE corner	
2	Controller, Double-check, Meter	Aurora Ave N / N 160th St	Spray Heads	40	Aurora Ave N / N 160th St, SW corner	
AREA 2: Aurora Ave N (N 165th St to N 185th St)						
ITEM #	Work Item	Street Segment	Irrigation Type	# Zones	Location	COST
3	Controller, Double-check, Meter	Aurora Ave N / N 170th St	Drip Irrigation	8	West side of Aurora Ave N south of N 170th St South end of planter @ bus stop	
4	Controller, Double-check, Meter	Aurora Ave N / N 175th St	Drip Irrigation	12	West side of Aurora Ave N, South of N 175th St, @ bus stop	
5	Controller, Double-check, Meter	Aurora Ave N / N 182nd St	Drip Irrigation	12	Aurora Ave N / N 182nd St, SW corner, back of sidewalk	
AREA 3: Aurora Ave N (N 185th St to N 193rd St)						
ITEM #	Work Item	Street Segment	Irrigation Type	# Zones	Location	COST
6	Controller, Double-check, Meter	Aurora Ave N / N 192nd St	Drip Irrigation	11	Aurora Ave N / N 192nd St, SW corner	
AREA 4: Dayton Ave N (N 172nd St to St Luke's Pl)						
ITEM #	Work Item	Street Segment	Irrigation Type	# Zones	Location	COST
7	Controller, Double-check, Meter	Dayton Ave N / N 172nd St	Spray Heads	10	Dayton Ave N / N 172nd St, NW Corner	

**Schedule A – Detailed Annual Cost
Table 6 - Irrigation System Locations and Work Items (Cont.)**

AREA 5: North City (NE 172nd St to NE 180th St)						
ITEM #	Work Item	Street Segment	Irrigation Type	# Zones	Location	COST
8	Controller	15th Ave NE / NE 175th St	Spray Heads	4	15th Ave NE / NE 175th St, NE Corner	
	Double-check & Meter location	15th Ave NE / NE 179th St			17750 - 15th Ave NE, eastside (planters)	
Total (1-8)						



Legend

Maintenance Schedule A

- ▬ Monthly
- ▬ Bi-Monthly
- ▬ 3x per Year

Road

Park

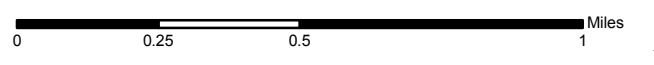
City Limit



Landscape Areas - By Road Segment and Intersection

Maintenance Frequency - Schedule A

This map is not an official map. No warranty is made concerning the accuracy, currency, or completeness of data depicted on this map.



Date: 1/26/2016
 Author: lbiddison
 Path: J:\GIS\Projects\Streets\LandscapeAreas\mxd\LandscapeAreas_Frequency.mxd