

**CITY COUNCIL AGENDA ITEM**  
CITY OF SHORELINE, WASHINGTON

|                      |  |   |                                 |
|----------------------|--|---|---------------------------------|
| <b>AGENDA TITLE:</b> | Sound Transit Lynnwood Link Extension Project Update             |   |                                 |
| <b>DEPARTMENT:</b>   | City Manager's Office  |   |                                 |
| <b>PRESENTED BY:</b> | Juniper Nammi, ST Project Manager<br>Sound Transit Project Staff |   |                                 |
| <b>ACTION:</b>       | <input type="checkbox"/> Ordinance                               | <input type="checkbox"/> Resolution     | <input type="checkbox"/> Motion |
|                      | <input checked="" type="checkbox"/> Discussion                   | <input type="checkbox"/> Public Hearing |                                 |

**PROBLEM/ISSUE STATEMENT:**

Design of Sound Transit's Lynnwood Link Light Rail Extension (LLE) Project is essentially complete and City staff are currently reviewing construction permits. Construction is scheduled to start in late March 2019. Rod Kempkes, Sound Transit LLE Project Director, requested the opportunity to brief City Council on light rail construction and what the community can expect over the next five years.

Sound Transit hosted a Light Rail Construction Open House in Shoreline on February 26, 2019, to share this construction information and the project final design with the community. This event provided the first opportunity for residents to ask questions about construction. The community was also able to meet the joint venture general contractor team of Stacy and Witbeck, Kiewit, and Hoffman (SKH) that will build the southern LLE portion of the project. Skanska will be the General Contractor on the northern LLE portion starting at NE 200<sup>th</sup> Street in Shoreline.

Tonight, Council has the opportunity to hear from Sound Transit staff on the construction phase of the light rail project and ask questions for better understanding of both the design and construction of light rail in Shoreline.

**RESOURCE/FINANCIAL IMPACT:**

There is no financial impact associated with tonight's discussion.

**RECOMMENDATION**

No formal action is required on this agenda item. Staff recommends that Council ask questions of Sound Transit and City staff for a better understanding of both the design and construction phase of the LLE project in Shoreline.

Approved By:            City Manager **DT**    City Attorney **MK**

## **BACKGROUND**

The City of Shoreline has been actively engaged in Sound Transit's (ST's) planning, environmental review, public outreach, and now design of the Lynnwood Link Extension (LLE) Project in Shoreline since 2010. The City Council adopted an "Open House-based" public design review process for light rail facilities in Shoreline on August 31, 2016. This process included the following community open houses:

- Shoreline Design Process Kick-off Open House (January 27, 2016)
- 30% Design Open House (November 16, 2016)
- 60% Design Open House (May 24, 2017)
- In-Progress 90% Open House (June 27, 2018)
- 90% (Final) Design/Pre-construction Open House (February 26, 2019)

Following each of the prior Sound Transit Open Houses, City staff reviewed comments and provided a recap of the Open House and a recommended response letter to the Council for their review and approval. Previous design review presentations and Council responses occurred at these past Shoreline City Council meetings:

### **30% Design - December 5, 2016**

- [Sound Transit Project Update and Response to 30% Design - Staff Report](#)
- [Shoreline City Council Summary Minutes – December 5, 2016](#)
- [Council Comment Letter to Sound Transit on 30% Design](#)

### **60% Design - June 19, 2017**

- [Sound Transit Project Update and Response to 60% Design - Staff Report](#)
- [Shoreline City Council Summary Minutes – June 19, 2017](#)
- [Council Comment Letter to Sound Transit on 60% Design](#)

### **In-Progress 90% Design - July 16, 2018**

- [Sound Transit Project IP90% Design Update and Comments - Staff Report](#)
- [Shoreline City Council Summary Minutes – July 16, 2018](#)
- [Council Comment Letter to Sound Transit on IP90% Design](#)

The 90% (Final) Design and Construction Open House recap and public comment summary will be provided as part of the Sound Transit and City staff presentation at the tonight's Council meeting, as this meeting packet was distributed prior to the Open House.

### **Guiding Principles for Light Rail Facility Design**

The Guiding Principles for Light Rail Facility Design (Attachment A) were adopted by the Council on February 29, 2016. Developed out of the January 27, 2016 Design Process Kick-off Open House, these Guiding Principles consist of eight categories with a number of bullets under each category. The eight categories are as follows:

- |                            |                                      |
|----------------------------|--------------------------------------|
| 1. Multi-modal;            | 5. Mobility;                         |
| 2. Neighborhood Character; | 6. Public Amenities;                 |
| 3. Sustainability;         | 7. Transit-Oriented Development; and |
| 4. Public Safety;          | 8. Public Art.                       |

Staff used the Guiding Principles for Light Rail Facility Design while completing final design review of the LLE Project.

### **City of Shoreline Special Use Permit**

Council amended the Shoreline Municipal Code requirements for light rail transit system and facilities on March 21, 2016, and July 11, 2016, to include specific requirements for review and approval of light rail through the quasi-judicial Special Use Permit (SUP) process. The final decision on the SUP will be made by the City's Hearing Examiner.

The SUP criteria for light rail (SMC 20.30.330(C)) requires that the proposed light rail project be consistent with the City's adopted Guiding Principles for Light Rail System/Facilities. The In-Progress 90% Open House, held on June 27, 2018, served as the required neighborhood meeting for the SUP application that was submitted on August 16, 2018. Staff expects to complete review and recommend approval with conditions to the Hearing Examiner by the end of March 2019. The SUP public hearing before the Hearing Examiner will be the final opportunity for public comment on the proposed LLE Light Rail Project. Application materials are available for public review online at: [shorelinewa.gov/lightrailpermits](http://shorelinewa.gov/lightrailpermits).

## **DISCUSSION**

### **LLE Project Update**

Sound Transit staff will present a project and construction update for the Shoreline alignment to Council this evening. This is an adapted version of the presentation from the Open House on February 26.

The 90% Design of the LLE Project incorporates final design adjustment changes that add more details and respond to City Council's comments in the July 2018 letter to Sound Transit. Some of these changes include:

- *Decorative cut-metal screens* will be installed on half the upper-level openings on the north and east sides of the Shoreline South/145<sup>th</sup> Parking Garage for visual interest and to reduce spill of interior lights to adjacent properties. Screen panel patterns at both stations were finalized.
- *Motion-sensing light controls* added to interior garage lighting so unoccupied garages will have lower light levels, reducing the amount of light spilling out of the garages at night that would potentially affect occupants of adjacent residences. Garage ceiling lights will also be installed away from the exterior walls to reduce light spilling outside while still meeting internal illumination requirements.
- *Water and electrical outlets for concessions* were added near one entrance to each station in the 90% Milestone submittal package. Sound Transit and City staff will work together to identify potential additional locations for electric receptacles and water connections near public plaza spaces at both stations that may be used for concessions or public events as the station and garage designs are advanced from 90% to 100% design for permitting.

- *Future installation of solar panels and electric vehicle charging stations will be accommodated by the current design. Sound Transit agreed to adjust the station and garage designs to ensure that the opportunity for future installation of solar panels or electric vehicle charging stations is not precluded by the structural and electrical design.*

The design was adjusted by requesting a departure from Sound Transit's own design guidelines to allow for surface mounted conduit at both stations and garages. The current electric services were evaluated and determined that additional EV Level II charging stations could be installed with the current capacity. The electrical service would need to be increased or solar power added for additional EV charging stations.

Small scale solar panels will be used to power the bike locker consoles (one per bank of lockers) at both stations. The power levels needed are low voltage and the panels can be easily located away from the consoles in sunnier locations if the bank of lockers is under cover. Sound Transit and City staff will work together between 90% and 100% design to determine potential locations for photovoltaic panels, EV charging stations, and small scale EV panels at both stations.

### **Construction of Light Rail**

Sound Transit submitted required construction permit applications in February 2019, and currently SKH plans to start early work construction activities in late-March/early-April 2019. Early work includes demolition of approximately 50 homes and associated improvements, removal of over 1,000 significant trees, relocation of utilities, wetland mitigation work, and set up of access roads and staging areas along the project corridor. Construction of the northern portion of the project by Skanska is anticipated to start in May or June 2019. Construction of retaining walls, stations, tracks, and accessory structures is scheduled to start Summer 2019.

Construction is organized into ten work zones in the City of Shoreline, and work will be occurring in all the zones concurrently, though within each zone, work may occur linearly from one end of a zone to the other. Temporary noise blankets will be installed on the construction fencing around the station sites and along stretches of the corridor where permanent noise walls need to be removed and reconstructed. Additional noise mitigation tools are available to nearby residents when noise blankets are not viable or adequate, including noise curtains or white noise machines.

The City is working with SKH as they develop traffic management plans and haul routes to ensure traffic safety and reduce impacts to adjacent neighborhoods. Two segments of 1<sup>st</sup> Avenue NE, south of Ridgecrest Park and south of NE 174<sup>th</sup> Street, will be closed during construction while they are relocated to the east. The portion of 5<sup>th</sup> Avenue NE extending south from NE 185<sup>th</sup> Street also needs to be moved east and will be closed for over two years to complete this work. East of I-5, NE 185<sup>th</sup> Street will be reconstructed in two phases so that motorized and non-motorized traffic can be maintained for the duration of the work. Additionally, the non-motorized bridge at NE 195<sup>th</sup> Street across I-5 will be closed for three to six months while the bridge is reinforced to allow the guideway to be constructed underneath the existing bridge.

Sound Transit's contractors will need to apply for nighttime noise variances, which require advanced notice to nearby residences, for work that needs to be completed during nighttime hours. Girders for elevated and road overpass segments of the guideway will be placed at night. Night work will also include raising of Seattle City Light transmission lines over I-5 to provide clearance during construction and afterward between transmission lines and the overhead centenary lines that power the light rail trains. Seattle City Light will need to turn off power in limited areas for completion of these modifications. They will provide notice to those affected by these preplanned outages at least 72 hours in advance.

Light rail construction will also impact neighborhood traffic patterns when detours are needed and additional construction traffic on haul routes. Homes near the construction area may also experience vibrations from soil improvement and compaction or drilling of shafts for columns or installation of soil nails on retaining walls. Sound Transit is committed to acting as a good neighbor during construction by providing timely information, maintaining safety and traffic flow, and by providing a 24-hour construction hotline: 1-888-298-2395.

Tonight, Council has the opportunity to hear from Sound Transit staff on the construction phase of the light rail project and ask questions for better understanding of both the design and construction of light rail in Shoreline. Rod Kempkes, Sound Transit LLE Project Director, will present to the Council on light rail construction and what the community can expect over the next five years. Sound Transit's presentation for tonight is attached to the staff report as Attachment B.

### **COUNCIL GOAL(S) ADDRESSED**

This project addresses Council Goal 3: Continue preparation for regional mass transit, and specifically the action step to "Partner with Sound Transit in hosting local public meetings for the In-Progress 90% and 90% design milestones to support identification of anticipated impacts to Shoreline neighborhoods from future construction and operation of the Lynnwood Link Extension and work proactively with Sound Transit to develop plans to minimize, manage, and mitigate these impacts, including construction management planning and neighborhood traffic impact management."

### **RESOURCE/FINANCIAL IMPACT**

There is no financial impact associated with tonight's discussion.

### **RECOMMENDATION**

No formal action is required on this agenda item. Staff recommends that Council ask questions of Sound Transit and City staff for a better understanding of both the design and construction phase of the LLE project in Shoreline.

### **ATTACHMENTS**

Attachment A: Guiding Principles for Light Rail Facility Design (Adopted Feb. 2016)  
Attachment B: Sound Transit Lynnwood Link Extension Project Update Presentation

## **Guiding Principles for Light Rail Facility Design**

1. **Multi-modal** – stations should be full-service transit hubs and provide great access and inviting and convenient connections for trains, buses, bikes, and pedestrians through options such as:
  - a. Ensuring that all modes of non-motorized users can easily access the stations from both sides of I-5 and NE 185<sup>th</sup> and 145<sup>th</sup> Streets;
  - b. Providing safe non-motorized access to and from the stations and garages, including consideration of a pedestrian/bicycle bridge connecting the 145<sup>th</sup> Street station to the west side of I-5;
  - c. Balancing the need to maximize parking spaces with the desire to expand opportunities for emerging trends such as car- and bike-sharing programs;
  - d. Providing well-marked way-finding in the station areas, including pedestrian pathways;
  - e. Streamlining transfers between transit modes to minimize the frequency and locations of bus turning movements; and
  - f. Encouraging transit use through:
    - i. Convenient connections to Bus Rapid Transit and other transportation services;
    - ii. Electronic, dynamic signs with transit data; and
    - iii. Availability of Orca cards for purchase at the stations.
  
2. **Neighborhood Character** – stations should connect to the surrounding community to encourage and enhance vibrant place-making by such means as:
  - a. Providing gathering places, such as plazas, that could be used for a variety of functions within the station footprint;
  - b. Promoting excellent design that conveys a sense of place through pedestrian scale features, façade and sound wall treatments, and complementary lighting;
  - c. Providing common design elements between both Shoreline stations;
  - d. Providing landscaping that reflects Shoreline’s commitment to green space and sustainability; and
  - e. Consider making use of areas under powerlines or trackways where feasible, including a potential trail connecting both stations (ex. City-managed public open spaces and/or trails).
  
3. **Sustainability** – all Sound Transit development should consider sustainable and climate friendly practices such as:
  - a. Incorporating energy-efficient and “green building” features, including Low-Impact Development techniques for storm water management;
  - b. Restoring impacted streams, wetlands, and other critical areas and associated buffers;

- c. Providing information about the functions and values of adjacent critical areas through interpretive signage or other means; and
  - d. Preserving significant trees when possible.
- 4. **Public Safety** – the facilities should be safe, welcoming areas for people of all ages at all times through measures such as:
  - a. Limiting locations where vehicles, including buses, may cross dedicated pedestrian routes;
  - b. Integration of Crime Prevention Through Environmental Design (CPTED) at all facilities;
  - c. Security cameras (monitored) and emergency call-boxes;
  - d. Station designs that are as open as possible with maximum use of transparent panels; and
  - e. Lighting that enhances safety, but is non-intrusive for neighbors.
- 5. **Mobility** – stations should provide accommodations for people of all ages and abilities including:
  - a. Providing accommodations for people with mobility challenges;
  - b. Access to allow easy mobility for those with strollers and/or luggage;
  - c. Providing disabled parking and drop-off zones; and
  - d. Constructing safe, ADA-compliant, wide walking paths, sidewalks and curb ramps (non-slip).
- 6. **Public Amenities** – the stations should provide gathering places that create a sense of community and emphasize art, culture, and history of the community by such means as:
  - a. Using bridge design to create an iconic look where feasible;
  - b. Installing bicycle storage with covered racks and lockers;
  - c. Installing garbage and recycling receptacles;
  - d. Providing seating (covered and uncovered);
  - e. Using icon-based signage;
  - f. Creating flexible spaces for gathering and entertainment, including the potential for leasable spaces;
  - g. Including weather protection elements; and
  - h. Consider providing restrooms.
- 7. **Transit Oriented Development** – promote TOD through facility siting and design that is supportive of future development opportunities.
- 8. **Public Art** – integrate elements of art wherever possible by:
  - a. Utilizing local artists when feasible; and
  - b. Enhancing facades and public spaces with art.

# *Lynnwood Link Extension Project Update*

Shoreline City Council  
March 4, 2019

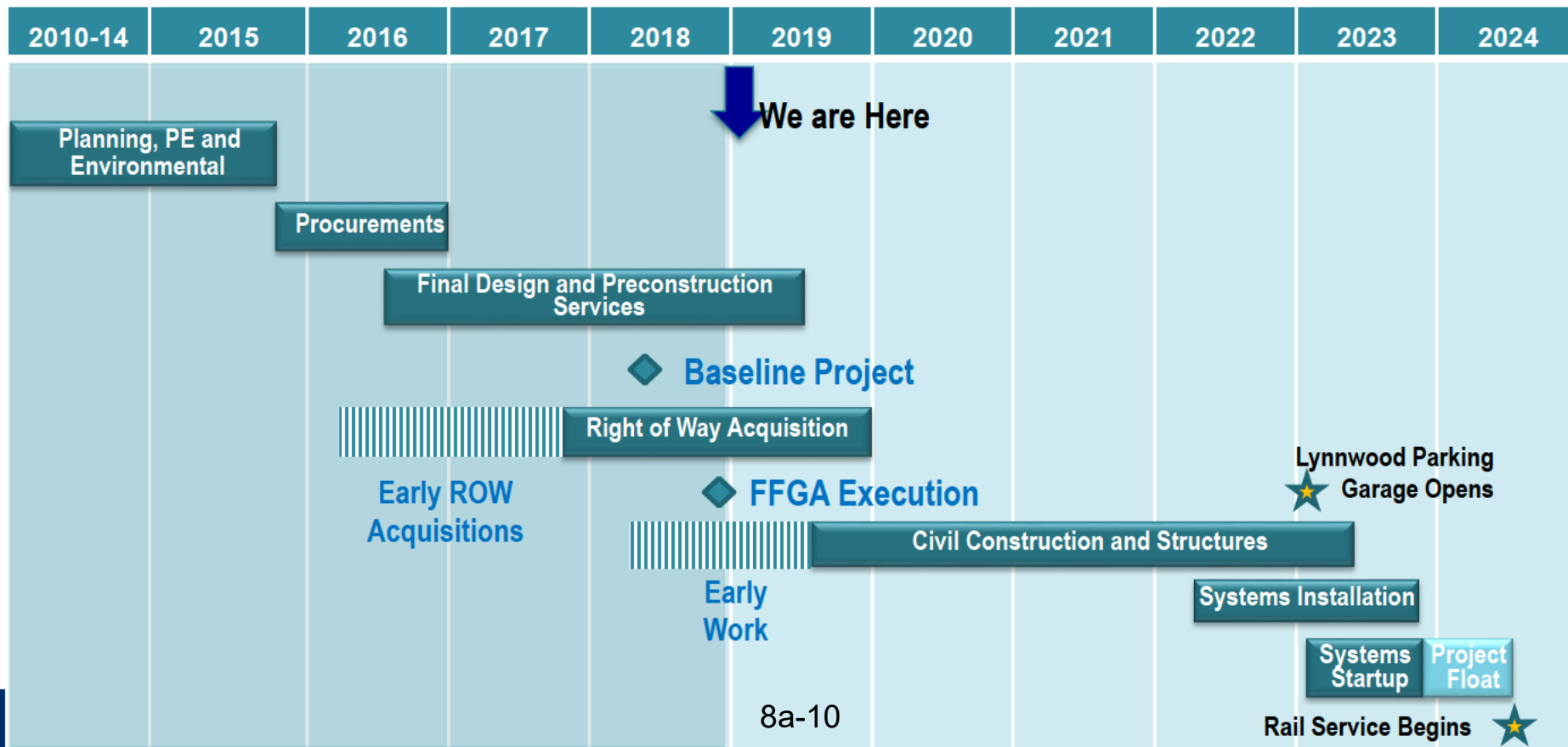
# Lynnwood Link Extension Project Update

- Project Status
- Completing Final Design and Permitting
- Preparing for Construction in 2019



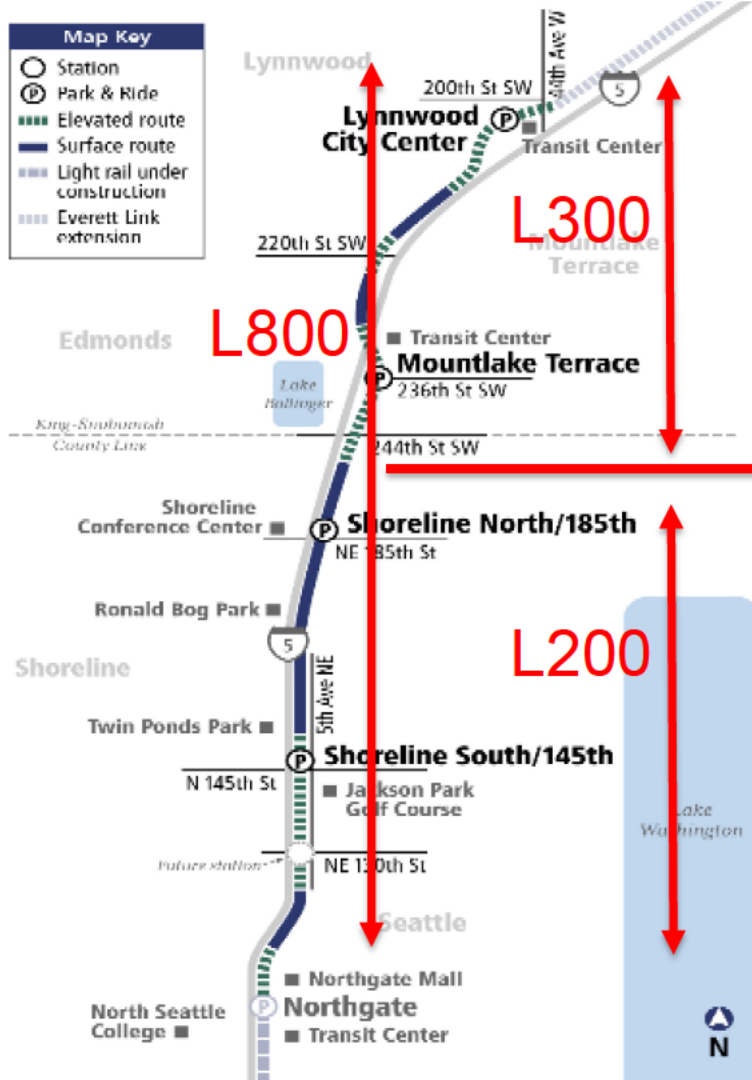
# Baseline Schedule

Attachment B



# Major Construction Packages

- L200 Civil – Stacy & Witbeck/Kiewit/Hoffman JV Northgate Station to NE 200<sup>th</sup> Street
- L300 Civil – Skanska Constructors L300 JV NE 200<sup>th</sup> Street to Lynnwood Station
- L800 Systems – Mass Electric
  - Traction Power
  - Communications
  - Train Control



# *Final Design and Permitting*

Attachment B

## Design completion status

- Guideway: 100%
- Stations: 90%

## Permitting status

- Early Work permits are in the process of approval by city staff
- Special Use Permit (SUP) application has been submitted and deemed complete
- Public Hearing on the SUP is planned for March 27

# *Early Work Activities*

# Demolition and utility relocation

Attachment B

- Residential structures
- Wet utilities by ST contractor
- Dry utilities by utility company



# *Tree removal and replacement*

Attachment B

- Tree removal to begin in spring 2019
- Seasonal restrictions due to Migratory Bird Treaty Act
- Timber becomes contractor property after removal
- Replacement plantings in next phase of contract



*\*Estimate*

# Noise wall demolition

- Many existing WSDOT noise walls will be removed during Early Work
- Temporary noise fences will be installed prior to existing noise wall removal as much as possible
- A “tool kit” of secondary noise mitigations may be employed by Sound Transit’s outreach team as needed



# Access road construction

Attachment B

- Temporary access roads for guideway construction will be constructed in Early Work
- Access points have been coordinated with WSDOT and cities during design
- Major temporary traffic control measures to be set up in Early Work
- Temporary erosion and sediment control



# Temporary Parking Changes during Construction

- North Jackson P&R closes this spring (~March 27)
- Parking available at two nearby lots
- 1:1 replacement



# Long-term Road Closure

5th Ave NE will be closed

- Starting as early as spring 2019
- Closed between NE 130th and NE 145th streets
- Space required to build columns for elevated structure
- Pedestrian path to remain open



# *Additional Early Closures*

- Ronald Bog Park
  - Closed for approximately one year
  - New trails, signage and landscaping
- NE 116<sup>th</sup> St. bike path
  - Detour route and duration TBD
- I-5 ramps and lanes
  - Periodic closures

**Typical work hours:  
Monday – Saturday  
7 am - 5 pm  
(periodic night and  
Sunday work will be  
necessary)**

# ***Community Outreach During Construction***

# Good neighbor commitments

*Sound Transit is committed to being a good neighbor during construction. We will work to manage impacts on surround communities by:*

- Providing timely information
- Maintaining a safe construction site
- Keeping people moving
- Protecting the environment
- Implementing a Business Relations program
- Maintaining a 24-hour Construction Hotline
- Outreach staff onsite, in the field



# Community Outreach

- **Mission:** It's our job to proactively facilitate, develop and maintain relationships within the community in order to plan and build Sound Transit projects. We represent Sound Transit's interests within the community and community's interests within Sound Transit.
- We rely on an environment of trust and integrity within the community.

# *Outreach during construction*

Attachment B

| Objectives                        | In a nutshell                      |
|-----------------------------------|------------------------------------|
| No surprises                      | Provide advanced notification      |
| Accessible & available            | Dedicated Community Outreach staff |
| Responsive & timely communication | Solve problems                     |
| Keep the end in sight             | Maintain momentum                  |

# Staying informed and engaged

- **Subscribe** to construction alerts at [soundtransit.org/subscribe](https://soundtransit.org/subscribe)
- **Contact** Community Outreach staff:
  - My Nguyen (Seattle & Shoreline):  
[My.Nguyen@soundtransit.org](mailto:My.Nguyen@soundtransit.org); 206-370-5690
  - Kurt Workman (Mountlake Terrace & Lynnwood):  
[Kurt.Workman@soundtransit.org](mailto:Kurt.Workman@soundtransit.org); 206-370-5664
- **Call** the 24-hour Construction Hotline for issues that require immediate attention after normal business hours; **1-888-298-2395**

# ***System Expansion Update***

# Everett Link Extension

Start of service in 2036

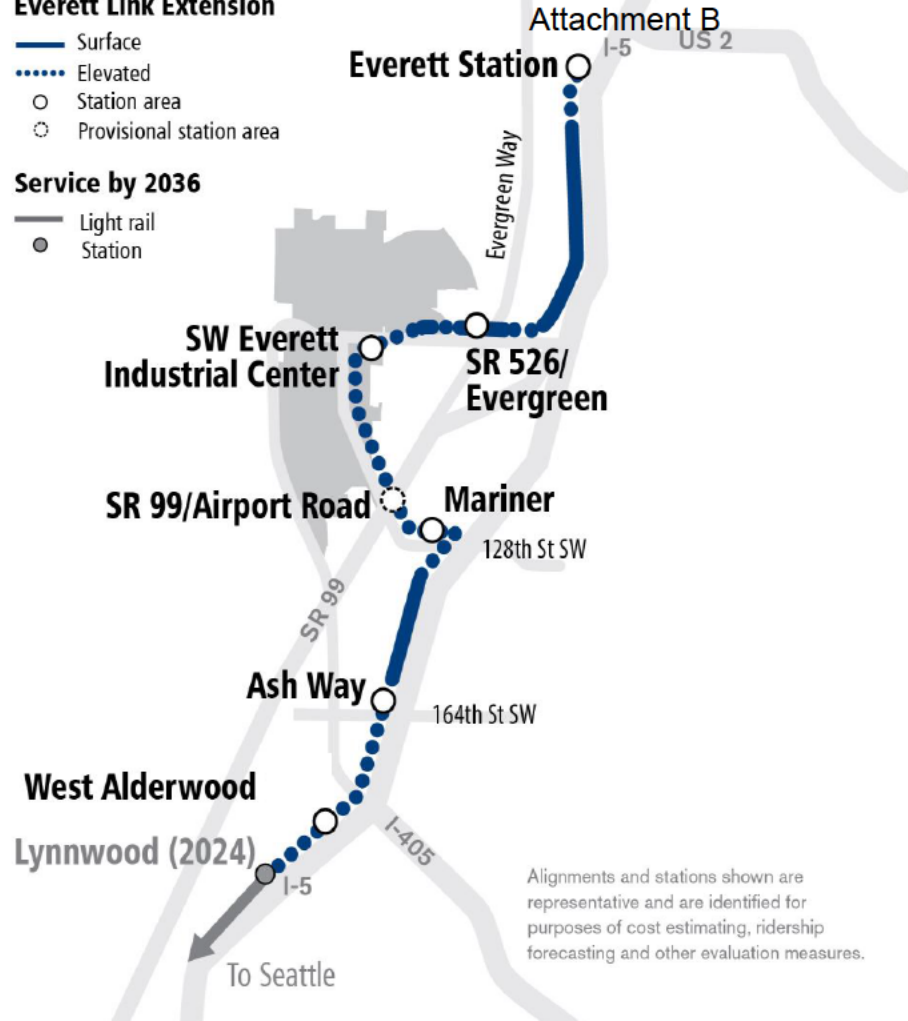
- Length: 16.3 miles
- Stations: 6 plus 1 provisional
- Early City/County planning
  - Coordinate public information
  - Inform ST process
- Sound Transit pre-project planning work starting in 2019

## Everett Link Extension

- Surface
- .... Elevated
- Station area
- Provisional station area

## Service by 2036

- Light rail
- Station



Alignments and stations shown are representative and are identified for purposes of cost estimating, ridership forecasting and other evaluation measures.



# *Bus Rapid Transit - Stride*

## Start of service in 2024

- Serving communities North, East and South of Lake Washington
- Fast, frequent, reliable
- Connecting to Link light rail at Shoreline, Lynnwood



# Bus-on-Shoulder

## Start of service in 2024

- Partnership between Sound Transit, WSDOT, Community Transit, and Pierce Transit
- Technical Advisory Group, workshops, technical experts
- Identify feasible locations, complete design and delivery
  - Quick/easy
  - Complex/expensive

Attachment B



# *Edmonds and Mukilteo Improvements*

## Early deliverable in 2024

- Parking and access improvements at Edmonds & Mukilteo Sounder Stations
- \$40 million for improvements
- Primary goal to build ridership
- Inter-Agency Group with cities, CT, Port of Edmonds



*Thank you.*



 [soundtransit.org](https://www.soundtransit.org)

