

CITY COUNCIL AGENDA ITEM
CITY OF SHORELINE, WASHINGTON

AGENDA TITLE:	Discussion of the Transportation Master Plan Update		
DEPARTMENT:	Public Works		
PRESENTED BY:	Nora Daley-Peng, Senior Transportation Planner		
ACTION:	<input type="checkbox"/> Ordinance	<input type="checkbox"/> Resolution	<input type="checkbox"/> Motion
	<input checked="" type="checkbox"/> Discussion	<input type="checkbox"/> Public Hearing	

PROBLEM/ISSUE STATEMENT:

The City of Shoreline (City) Transportation Master Plan (TMP) is the long-range blueprint for multimodal travel and mobility within Shoreline. The last update to the TMP was in 2011. The TMP, which serves as the supporting analysis for the City's Comprehensive Plan Transportation Element, must be updated to align with the City's Comprehensive Plan periodic update by 2024 and meet the Growth Management Act requirements; maintain the City's eligibility for pursuing future grant funding; and set transportation policies for guiding the development of Shoreline.

The purpose of this agenda item is to provide the City Council with a briefing on the progress of the TMP update. To date, the project team has assessed existing conditions and needs, conducted the first and second round of public outreach, developed the TMP Vision and Goals, and developed a draft project evaluation framework. Tonight, staff will provide Council with an overview of the TMP update progress, a summary of Outreach Series 2, a refresher on the Vision and Goals, a review of draft project evaluation framework, and an outline of next steps.

RESOURCE/FINANCIAL IMPACT:

There is no additional financial impact associated with the continued work on this project.

RECOMMENDATION

There is no action required tonight; this meeting will provide a briefing on the progress of the TMP update and a review of the draft project evaluation framework for Council's feedback.

Approved By: City Manager **DT** City Attorney **MK**

INTRODUCTION

The TMP update will provide a framework to guide investments in existing and new transportation infrastructure and programs over the next 20 years in accordance with the community's transportation priorities. The TMP update will be developed through close collaboration between City staff, stakeholders, and the public, as well as the Planning Commission and Council, to help improve mobility and quality of life.

On October 26, 2020, Council discussed and approved authorization to execute a consultant contract to support the TMP update. The staff report for that discussion can be found at the following link:

<http://cosweb.ci.shoreline.wa.us/uploads/attachments/cck/council/staffreports/2020/staffreport102620-7c.pdf>.

On May 24, 2021, Council discussed and generally agreed with the vision and goals for the TMP update. The staff report for that discussion can be found at the following link:

<http://cosweb.ci.shoreline.wa.us/uploads/attachments/cck/council/staffreports/2021/staffreport052421-9a.pdf>.

This report provides an overview of the TMP update process, a summary of Outreach Series 2, a refresher on the Vision and Goals, a review of draft project evaluation framework, and an outline of next steps.

BACKGROUND

The City is currently updating its TMP to better serve the community's current and future transportation needs. The TMP supports all forms of travel – by foot, bicycle, skateboard, scooter, stroller, wheelchair, transit, motorcycle, automobile, etc. With the coming arrival of light rail transit, new and higher frequency bus service, new pedestrian/bicycle connections, and land use changes and growth, the TMP update provides an opportunity to better align transportation goals, objectives, and policies with the City's Comprehensive Plan.

The TMP update will guide local and regional transportation investments and define the City's future transportation policies, programs, and projects for the next 20 years. Using the TMP as a guide, the City can assess the relative importance of transportation projects and programs and schedule their planning, engineering, and construction as Shoreline growth takes place and the need for improved and new facilities is warranted. The TMP update will also establish a methodology/criterion for prioritization of projects to be included in future Transportation Improvement Plans (TIPs) and Capital Improvement Plans (CIPs).

The last update to the TMP was in 2011. The TMP, which serves as the supporting analysis for the City's Comprehensive Plan Transportation Element, must be updated to align with the City's Comprehensive Plan periodic update by 2024 and meet the Growth Management Act requirements; maintain the City's eligibility for pursuing future grant funding; and set transportation policies for guiding the development of Shoreline.

TMP Update Schedule

In fall 2020, the City launched a multi-year process to update the TMP with the goal of adoption by the end of 2022. City staff will continue briefing the Planning Commission and City Council throughout the process and seek their feedback on the development of the TMP update. The following overview schedule shows key milestones for the TMP update process. See Attachment A for a detailed project schedule.



DISCUSSION

Since the start of work on the TMP update, staff with the community have progressed in several areas. Tonight, we will update the Council on the status and direction of the project and seek input on the draft project evaluation framework, which will provide a transparent and data-driven process for evaluating and prioritizing potential transportation projects.







Vision and Goals

On May 24, 2021, Council discussed and generally agreed with the Vision and Goals for the TMP update. A vision statement defines a plan's long-term goals and guides decision making. The vision statement for the type of transportation system that the City would like to provide by 2044 (the planning horizon year of the update to the TMP) is as follows:

Shoreline has a well-developed multimodal transportation system that offers safe and easy travel options that are accessible for everyone, builds climate resiliency, and promotes livability. This system has been developed over time, informed by a robust, inclusive dialogue with the community.

The project team developed the Vision and Goals for the TMP based on input received from the public and community groups about their transportation priorities and needs as well as from input received during a TMP Goals Setting Workshop with City staff participants representing most City departments and their unique perspectives.







Having clearly defined goals will help the City accomplish the Vision. The TMP Vision has the following six (6) Goals, each with a purpose statement:

Goal	Purpose
Safety 	Prioritize Safety Make Shoreline's transportation system safe and comfortable for all users, regardless of mode or ability.
Equity 	Seek Equity Ensure all people, especially those whose needs have been systemically neglected, are well served by making transportation investments through an anti-racist and inclusive process which results in equitable outcomes.
Multimodality 	Provide Multimodal Options Expand and strengthen the multimodal network, specifically walking, biking, and transit, to increase the number of safe, convenient, reliable, and accessible travel options.
Connectivity 	Plan a Connected Community Complete a network of multimodal transportation connections to and from key destinations such as parks, schools, community services, commercial centers, places of employment, and transit.
Climate Resiliency 	Protect the Environment Make transportation decisions that increase climate resiliency by promoting sustainability, reducing pollution, promoting healthy habitats, and supporting clean air and water.
Community Vibrancy 	Support a Vibrant Community Make transportation decisions that support livability by evoking a sense of identity through arts/culture, attracting and sustaining desired economic activity, and accommodating the movement of people and goods.

Draft Project Evaluation Framework

The TMP update will guide local and regional transportation investments and define the City's future transportation policies, programs, and projects for the next 20 years. In this way, the TMP update process will help the City assess the relative importance of transportation projects and programs; and schedule their planning, engineering, and construction as Shoreline growth takes place and the need for improved and new facilities is warranted. The TMP update will also establish a methodology for prioritization of a list of projects to be included in the future Transportation Improvement Plan (TIP) and Capital Improvement Plan (CIP).

As a starting point of how the City will prioritize the TMP projects over the next 20 years, City staff developed the following draft project evaluation framework (the Framework) that pairs evaluation criteria with the TMP Goals. City staff plans to develop a list of potential transportation projects in early 2022 and use the Framework to evaluate how well potential transportation projects achieve the TMP Vision and Goals. Once the draft Framework has been fully vetted, City staff will develop a companion set of prioritization metrics for each of the evaluation criteria. The Framework and companion prioritization metrics will provide a transparent and data-driven process for evaluating and prioritizing potential transportation projects.

Goal	Purpose	Project Evaluation Criteria
Safety 	Prioritize Safety Make Shoreline's transportation system safe and comfortable for all users, regardless of mode or ability.	Decrease Injury Collisions Identify locations in need of increased safety measures based on collisions and traffic speed and volume.
Equity 	Seek Equity Ensure all people, especially those whose needs have been systemically neglected, are well served by making transportation investments through an anti-racist and inclusive process which results in equitable outcomes.	Provide Equitable Access Identify areas of populations who have the greatest need (e.g., children, older adults, people with disabilities, lower income communities, communities of color, and limited English speakers).
Multimodality 	Provide Multimodal Options Expand and strengthen the multimodal network, specifically walking, biking, and transit, to increase the number of safe, convenient, reliable, and accessible travel options.	Reduce Auto Dependency Support frequent and reliable transit service (e.g., BAT lanes, queue jumps, etc.). Provide multimodal access to and from shared-use mobility hubs, transit stops, and stations.
Connectivity 	Plan a Connected Community Complete a network of multimodal transportation connections to and from key destinations such as parks, schools, community services, commercial centers, places of employment, and transit.	Build a Connected Network¹ Plan a robust network of connected transit, pedestrian, and bicycle routes to key destinations (e.g., parks, schools, libraries, etc.).
Climate Resiliency 	Protect the Environment Make transportation decisions that increase climate resiliency by promoting sustainability, reducing pollution, promoting healthy habitats, and supporting clean air and water.	Increase Resiliency to Climate Change² Identify ways to reduce flooding vulnerabilities, urban heat island effect, and greenhouse gas emissions.
Community Vibrancy 	Support a Vibrant Community Make transportation decisions that support livability by evoking a sense of identity through arts/culture, attracting and sustaining desired economic activity, and accommodating the movement of people and goods.	Enhance Quality of Life Promote the movement and delivery of goods; multimodal access to local businesses and community services; connections to nature via trails and paths; and places for public art, culture, and community gathering.

1 Refer to Reduce Auto Dependency for criteria for accessing transit options.

2 Refer to Reduce Auto Dependency for criteria for reducing transportation emissions by encouraging taking other travel modes than driving.

Planning for the Future

To prepare for the future, the TMP update will respond to transformations occurring in Shoreline through land use changes, redevelopment, transportation infrastructure improvements, the upcoming arrival of light rail transit and new and higher frequency bus service, as well as anticipated population growth. Currently, the project team is developing a future travel demand model based on King County's growth projections for 13,330 new households and 10,000 new jobs by 2044. To build the future travel demand model, the project team will use an approach that is consistent with the Puget Sound Regional Council forecasting methodology.

The project team will correlate the growth projections to the City's zoning e.g., the 145th Street Station Subarea is predicted to receive 17% of Shoreline's household growth, and 18% of its job growth. Similarly, the team will develop the future travel demand model based on the City's existing and planned land uses. The future travel demand model will be used to evaluate future year scenarios and subsequently develop the TMP's transportation policies, modal plans, projects, and programs to meet the demands of the future while achieving the TMP's vision and goals.

City staff will provide more information regarding the future travel demand model, draft modal policies and plans, and additional information on the project evaluation framework the next time they meet with Council.

PUBLIC AND STAKEHOLDER ENGAGEMENT

Public involvement is an essential component of the TMP update process. There will be multiple opportunities throughout the process for the public and stakeholders to learn about future transportation needs, envision improvements, and give feedback.

In February 2021, the City conducted Outreach Series 1 which included two identical online open houses, and numerous community group online presentations and discussions. Key topics discussed at the meetings included safety, sidewalks, neighborhood paths, bike facilities, transit, shared-use mobility, and parking. In addition, the City hosted an online survey that asked about people's transportation priorities and travel patterns. It also asked people to identify types of destinations they would like to travel to without relying on a personal vehicle and barriers that currently prevent them from using other modes. The survey also included several questions to gauge people's interest in using mobility hubs that provide choices for completing trips without a personal vehicle through options such as bike share, scooter share, car share, etc. City staff presented a summary of the results from Outreach Series 1 at the Council meeting on May 24, 2021. For a full summary report of Outreach Series 1, visit the project webpage at the following link: <https://www.shorelinewa.gov/tmp>.

To get a better sense of the community's transportation needs, the project team conducted Outreach Series 2 in early summer. Outreach activities included an online open house on June 22, online briefings to numerous neighborhood associations and community groups, and in-person tabling at the Shoreline Farmers Market. Overall, 103 people participated in these Outreach Series 2 events. Key topics discussed at the meetings included getting to and from the future light rail stations, redevelopment, traffic congestion, neighborhood paths, and alternative modes of transportation e.g., community shuttle van, car share, bike share, scooter share, etc.

The following provides a summary of key discussion topics from Outreach Series 2 meetings:

- **Transit** – Discussion about how get to and from the future light rail stations in Shoreline. Many questions about King County Metro's upcoming transit service restructure with the opening of Lynnwood Link Light Rail Extension and Metro Connects long-range plan for bus service through Shoreline.
- **Shared-use Mobility** – Dialog about the creation of mobility hubs throughout the city to provide convenient ways (such as community van/shuttle, bike share, scooter share and ride hailing) for people to make that first and last mile connections without needing to drive.
- **Traffic** – Discussion about how traffic patterns and volumes are expected to change when the future light rail stations open in 2024.
- **Redevelopment** –near the future light rail stations. Discussions about better ways to manage vehicular Concern about the impacts of redevelopment on neighborhoods, particularly access to new developments, the increase of garbage bins on sidewalks, and the increase of home-delivery vans.
- **Neighborhood Paths** – Interest in formalizing, beautifying, and extending a network of neighborhood paths to key destinations such as schools, parks, and

commercial centers. A growing desire for more paths to connect to nature and get away from busy streets.

- **Bicycle Facilities** – Desire for more comfortable and direct bicycle connections to key destinations like the future light rail stations, local businesses, parks, the Interurban Trail, and the Burke-Gilman Trail.
- **Curb Management** – Discussion about the highest and best use of curb space to support a variety of functions including deliveries, on-street parking, outdoor dining, bicycle/scooter parking, etc.

In addition to conducting outreach meetings and events, the City encouraged the community to participate in an online survey that ran from mid-June through mid-July, 2021. 698 people from throughout the city and from other nearby communities took the survey (see Attachment B for the Outreach Series 2 survey questions). The survey asked people to identify specific locations where they would like to see pedestrian, bicycle, automobile, and transit improvements to inform the development of modal networks for the TMP. The following summarizes the types of questions the survey asked per travel mode:

- **Auto Network** – With increasing traffic volumes, constrained public right of way, and limited funding, the survey asked participants to list up to three intersections most important for maintaining reasonable flow.
- **Pedestrian Network** – Since the Sidewalk Prioritization Plan was adopted in 2018 as early work for this TMP Update, the survey asked participants to identify where they would like to see new or improved crosswalks and pathways that would complement a network of sidewalks.
- **Bicycle Network** – Participants were asked about bicycling and barriers they face and were then asked to list up to three (3) roadways on which they want to be more comfortable bicycling and why.
- **Transit Network** – Participants were asked if they take or plan to take transit in the future as well as what are the concerns that impact this decision. They were then asked to list up to three destinations they would like to access by transit. A final question asked what factors would influence using on-demand transit which is a service that allows a person to request to be picked up by a smaller vehicle at their point of origin using a mobile app, a website, or a phone, and be taken to either a transit stop or other destination.

The project team is currently reviewing and aggregating the survey results into summary tables, charts, and maps to help visualize the survey responses. The City expects to publish a full summary of Outreach Series 2 including detailed survey results in November to the project webpage at: <https://www.shorelinewa.gov/tmp>. The project team will analyze how the survey results could inform the development of the TMP draft modal plans for pedestrian, bicycle, transit, shared-use mobility, and auto/freight modes.

NEXT STEPS

Over the winter 2021/2022, the project team will build on the knowledge gained from Outreach Series 1 and 2 and the future travel demand model. The project team will use this to develop a draft layered transportation network of modal plans for pedestrian,

bicycle, transit, shared-use mobility, and auto/freight modes. In addition, the project team will draft multimodal level of service (MMLoS) policies and develop metrics for the prioritization of transportation projects.

The project team plans to conduct Outreach Series 3 in March 2022 to share the results of Outreach Series 2, get feedback on the project evaluation framework, and explain what a “layered transportation network” and “multimodal level of service” means and how those concepts apply to draft modal plans and policies.

COUNCIL POLICY QUESTION

In addition to receiving the Council’s early input on all aspects of the TMP update, staff are interested in hearing Council’s feedback on the following policy issue:

- Is the draft TMP project evaluation framework aligned with City Council goals?

COUNCIL GOAL(S) ADDRESSED

The TMP update supports all five of the 2021-2023 City Council Goals and directly supports the following City Council Goals:

- *Goal 2: Continue to deliver highly-valued public services through the management of the City’s infrastructure and stewardship of the natural environment.*
- *Goal 3: Continue preparation for regional mass transit in Shoreline.*

RESOURCE/FINANCIAL IMPACT

There is no additional financial impact associated with the continued work on this project.

RECOMMENDATION

There is no action required tonight; this meeting will provide a briefing on the progress of the TMP update and a review of the draft project evaluation framework for Council’s feedback.

ATTACHMENTS

Attachment A – Detailed TMP Update Schedule

Attachment B – TMP Update Outreach Series 2 Survey Questions

Shoreline TMP Schedule*Revision Date: October 4, 2021*

Task	Key Components	Approximate Schedule
Phase 1 – Nov 2020 to Oct 2021		
1. Project Management	<ul style="list-style-type: none"> Kickoff meeting Bi-weekly check-in calls Monthly invoices and progress reports 	Nov 2020 – Dec 2021
2. Laying the Groundwork	<ul style="list-style-type: none"> Priorities workshop 	Nov 2020
3. Public Meetings, Planning Comm (PC) and City Council (CC) Meetings	<ul style="list-style-type: none"> Public Involvement Plan Public Outreach <ul style="list-style-type: none"> Outreach Series 1: What is a TMP, vet priorities, existing challenges/opportunities Outreach Series 2: Modal plans & MMLOS City Council and Planning Commission meetings <ul style="list-style-type: none"> PC1 and CC1 Meetings: TMP Overview, priorities, existing challenges/opps, Outreach Series 1 results PC2 and CC2 Meetings: TMP process, project evaluation criteria, Outreach Series 2 results 	Nov/Dec 2020 Jan – Mar 2021 Jun – Aug 2021 Apr/May 2021 Nov 2021
4. Technical Foundation	<ul style="list-style-type: none"> Data Collection Travel Demand Model Forecast Updates & LOS Analysis Planning Context and Existing Conditions 	Nov 2020 – Mar 2021 Nov 2020 – Apr 2021 Dec 2020 – Apr 2021
5. Modal Network Development and MMLOS Policies	<ul style="list-style-type: none"> Creation of Layered Network Develop MMLOS Policies 	Apr – Nov 2021 Apr – Nov 2021
Phase 2 – Nov 2021 to Dec 2022		
6. Project Management	<ul style="list-style-type: none"> Bi-weekly check-in calls Monthly invoices and progress reports 	Nov 2021 – Dec 2022
7. Project Prioritization, Selection, Costing, Funding Identification, and Policies Update	<ul style="list-style-type: none"> Street Typologies Prioritization Criteria/Performance Measures Future Year Modeling Project List Development Project Costing Funding Assessment Transportation Element (TE) Policies Update 	Dec– Jan 2021 Aug – Dec 2021 Oct 2021 – Jan 2022 Jan – Mar 2022* Jan – Mar 2022* Jan – Mar 2022* Jan – Mar 2022*

* We should have the first substantial cut at these by Mar 2022, but we expect to revise up to Aug 2022 based on Outreach Series 3 and Draft Plan feedback.

Task	Key Components	Approximate Schedule
8. Document Production	<ul style="list-style-type: none"> • Administrative Draft Plan • Draft Plan • Final Plan • SEPA Support 	<p>Mar – Apr 2022</p> <p>May – Jun 2022</p> <p>Aug – Dec 2022</p> <p>May – Jun 2022</p>
9. Public Meetings, Planning Comm (PC) and City Council (CC) Meetings	<ul style="list-style-type: none"> • Public and Stakeholder Outreach <ul style="list-style-type: none"> ◦ Outreach Series 3: Draft projects, programs, and policies • City Council and Planning Commission meetings <ul style="list-style-type: none"> ◦ PC3 and CC3 Meetings: MMLOS policies and modal plans ◦ PC4 and CC4 Meetings: Prioritization and draft projects ◦ PC5 and CC5 Meetings: Draft Plan (Public Hearing) ◦ PC6 and CC6 Meetings: Final Plan ◦ CC7 Meeting: Comp Plan Amendments (TE update) ◦ CC8 Meeting: TMP Adoption 	<p>Mar 2022</p> <p>Feb 2022</p> <p>Apr/May 2022</p> <p>Jun/Jul 2022</p> <p>Sep 2022</p> <p>Nov/Dec 2022</p> <p>Nov/Dec 2022</p>



Shoreline Transportation Master Plan (TMP) Survey 2

Welcome! Please click "Next" at bottom of this page to take the survey in English.

English If you would like to communicate with the City of Shoreline or review a document in another language, please send your request along with your contact information to ndaleypeng@shorelinewa.gov or call 206-801-2700.

Spanish Si quisiera comunicarse con la ciudad de Shoreline o revisar un documento en otro idioma, envíe su solicitud junto con su información de contacto a ndaleypeng@shorelinewa.gov o llame al 206-801-2700.

Chinese (Traditional) 如果您想與 City of Shoreline 進行交流或檢視以另一種語言提供的文件，請將您的請求連同您的聯絡資訊發送到 ndaleypeng@shorelinewa.gov 或請致電 206-801-2700。

Chinese (Simplified) 如果您想与 City of Shoreline 进行交流或查看以另一种语言提供的文档, 请将您的请求连同您的联系信息发送到 ndaleypeng@shorelinewa.gov 或请致电 206-801-2700。

Korean City of Shoreline에 연락하고 싶거나 다른 언어로 된 문서를 검토하려면 연락처 정보와 함께 요청서를 ndalevpeng@shorelinewa.gov로 제출하거나 206-801-2700번으로 전화해 주십시오.

Vietnamese Nếu quý vị muốn liên hệ với Thành phố Shoreline hoặc đọc tài liệu bằng ngôn ngữ khác, vui lòng gửi yêu cầu cùng với thông tin liên hệ tới địa chỉ ndaleypeng@shorelinewa.gov hoặc gọi 206-801-2700.

Tagalog Kung gusto mong makipag-usap sa Lungsod ng Shoreline o suriin ang isang dokumento sa ibang wika, pakipadala ang iyong kahilingan kasama ng iyong impormasyon sa pakikipag-ugnayan sa ndaleypeng@shorelinewa.gov o tumawag sa 206-801-2700.

Amharic የኸርላይን ከተማ ጋር ለመገናኘት ከፈለጉ ወይ ndaleypeng@shorelinewa.govም እንድን ሰነድ በሌላ ቋንቋ ለመከለስ ከፈለጉ ጥያቄዎን ከመገኛ መረጃዎ ጋር በማድረግ በ ላይ ኢሜይል ያድርጉ ወይም በ 206-801-2700 ላይ ስልክ ይደውሉ።

Tigrigna ምስ ከተማ ሾርላይን ከትዘራረቡ ወይ ድማ ሰነዳትኩም ብካልእ ቋንቋ ከተገምግሙ ምስ እትደልዩ፡ ጠለባትኩም ምስናይ ናይ መርከቢ ሓበሬታኹም ናብ ndaleypeng@shorelinewa.gov ስደዱ ወይ ድማ ብቺጽሪ 206-801-2700 ደግሱ።

Russian Если вы хотите связаться с представителями города Шорлайн (Shoreline) или ознакомиться с документом на другом языке, отправьте запрос вместе со своими контактными данными на адрес ndaleypeng@shorelinewa.gov или позвоните по телефону 206-801-2700.

Japanese City of Shoreline とのご連絡、または他の言語での資料閲覧をお望みでしたら、お客様のご連絡先を添えたリクエストを ndaleypeng@shorelinewa.gov まで送信いただくか、206-801-2700 までお電話をお願いいたします。



Shoreline Transportation Master Plan (TMP) Survey 2

The City of Shoreline is updating its [Transportation Master Plan](#) to guide transportation investments over the next 20 years to better serve the community’s mobility needs.

Please take this survey about Shoreline’s transportation elements (auto, pedestrian, bicycle, and transit) that come together to keep a community moving and how we can improve them.

*** 1. What neighborhood do you live in? (Not sure? See [Neighborhood Map](#))**

2. How did you hear about this survey? *(Please choose all that apply)*

- ☐ Currents newsletter
- ☐ City website
- ☐ Shoreline Neighborhood Association
- ☐ Email notification
- ☐ Poster / flyer
- ☐ Apartment complex posted announcement
- ☐ Yard sign
- ☐ Farmer's Market
- ☐ Facebook
- ☐ Twitter
- ☐ Friend, neighbor, family member
- ☐ Other (please specify)



Shoreline Transportation Master Plan (TMP) Survey 2

Auto Network

As Shoreline grows over the next 20 years, traffic and delays are likely to increase as well. The City will try to keep as many locations as possible operating smoothly, but resources are limited.

3. Please list up to 3 intersections in Shoreline that are most important to you for maintaining reasonable traffic flow.

Example: *N 175th St & Meridian Ave N*

Intersection 1

Intersection 2

Intersection 3



Shoreline Transportation Master Plan (TMP) Survey 2

Pedestrian Network

In 2018, the City of Shoreline worked with the community to develop a [Sidewalk Prioritization Plan](#) identifying 75 miles of new sidewalk to complete the sidewalk network. In addition, the City evaluated existing sidewalk facilities and is developing an ADA (Americans with Disabilities Act) [Transition Plan](#) to guide sidewalk repair.

To complement this sidewalk network, in questions 4 and 5 below we hope you can share your thoughts on crosswalks and unimproved paths.

4. List up to 3 locations where you would like crosswalks added or enhanced in Shoreline and briefly explain why. Be specific.

Example:

Location 1: Richmond Beach Rd between 3rd and 8th Ave NW

Reason 1: There is a long gap between crossings for neighbors to reach businesses.

Location 1	
Reason 1	
Location 2	
Reason 2	
Location 3	
Reason 3	

Informal Paths

There are many informal unpaved dirt paths in the City showing routes that people walking may prefer to take. These can provide a more direct route for accessing key destinations. The City identifies some of these on its [Unimproved Right-of-Way map](#).

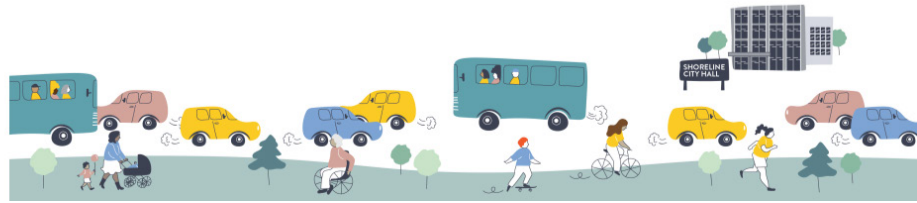
5. List up to 3 locations where you would like the City to add or upgrade a pathway connection and briefly explain what destinations it would help connect. Be specific.

Example:

Location 1: *Off of 190th St between Corliss Ave N and 1st Ave NE*

Reason 1: *Offers the neighborhood a more direct route to Shoreline Park*

Location 1	
Reason 1	
Location 2	
Reason 2	
Location 3	
Reason 3	



Shoreline Transportation Master Plan (TMP) Survey 2

Bicycle Network

As Shoreline grows, more people are interested in bicycling to work/school, for errands, or as a form of recreation. However, many are uncomfortable bicycling in parts of Shoreline today. Providing comfortable streets with lower-stress environments for bicyclists would help Shoreline to become bicycle-friendly and provide for this alternative mode of transportation.

6. If there were more streets with bicycle facilities that match your comfort level, would you bicycle more?

- ☐ Yes
- ☐ No
- ☐ Do not know

**7. What barriers do you face today that limit how much you bicycle?
(select all that apply)**

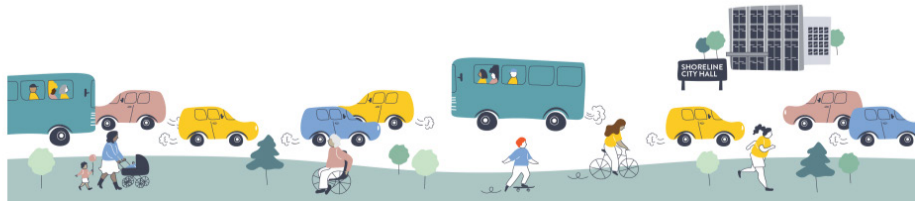
- ☐ I do not have a bicycle.
- ☐ I do not have a bicycle lock.
- ☐ Lack of bicycle facilities or I am uncomfortable with existing bicycle facilities.
- ☐ It is too far to ride to my desired destination.
- ☐ There are no changing rooms/showers at my desired destination
- ☐ I do not like bicycling when it is cold or wet.
- ☐ The hills.
- ☐ I do not face any real barriers to bicycling.
- ☐ Other (please specify)

- ☐ N/A - I do not ride a bicycle

**8. List up to 3 roadways on which you want to be more comfortable bicyclingand
briefly explain why you have a concern at that location. Be specific.**

Example:
Location 1: 15th Avenue NE (160th - 175th Streets)
Concern 1: Want to bicycle to Hamlin Park with my kids but the bike lanes are too close to fast moving traffic.

Location 1	
Concern 1	
Location 2	
Concern 2	
Location 3	
Concern 3	



Shoreline Transportation Master Plan (TMP) Survey 2

Transit Network

With light rail and new bus rapid transit options coming, Shoreline's transit landscape is quickly evolving. Below is a summary ([or click here for map](#)) of the different types of service planned in Shoreline:

- **Shoreline North/185th and Shoreline South/148th light rail stations** are planned to open by 2024, providing service north to Lynnwood and south to downtown Seattle and beyond.
- **Swift Blue Line** is planned to extend to the Shoreline North/185th Station by 2024, providing frequent all-day service.
- **Stride Bus Rapid Transit** is planned to provide frequent, all-day bus service from Bothell to the Shoreline South/148th Station by 2025.
- **King County Metro** plans to expand on existing service, providing a robust network by 2040.

While some types of future transit service are not under the City's control, the City is working with regional transit providers (King County Metro, Sound Transit, and Community Transit) about what future transit service might look like. We want to hear what your priorities are to inform these discussions

9. Do you take transit now and/or are you interested in taking transit in the future?

☐ Yes

☐ No

10. What are your top 3 concerns in the list below that impact your transit experience and decision to use (or not use) transit?

- ☐ Travel time (as compared to other modes, like driving)
- ☐ Cleanliness of buses or light rail cars
- ☐ Cleanliness and amenities at the bus stop
- ☐ Safe pedestrian facilities leading to the stop (e.g. sidewalks or crosswalks)
- ☐ Proximity to a bus stop
- ☐ Minimal number of transfers
- ☐ Reliability of service (i.e. on-time arrival and consistent travel times)
- ☐ Cost
- ☐ Personal safety using transit
- ☐ Other (please specify)

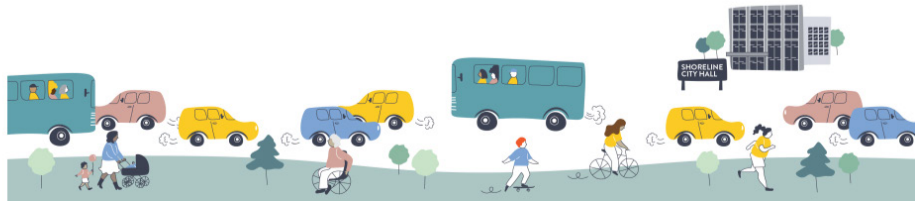
11. List up to 3 destinations you would most like to be able to access by transit (can be inside or outside Shoreline). Be specific when needed.

Example: *Instead of "store" put "Trader Joe's on 175th" or "post office on 145th," etc.*

Destination 1

Destination 2

Destination 3



Shoreline Transportation Master Plan (TMP) Survey 2

On-Demand Transit

On-demand transit would allow you to request to be picked up by a smaller vehicle at your origin using a mobile app, a website, or a phone, and taken either to your final destination or a transit stop.

12. What factors would influence whether or not you would use this type of service in Shoreline?

(select all that apply)

- ☐ Ease of making a reservation on the app, website, or phone
- ☐ Length of wait time at your origin
- ☐ Times of day / days of week offered
- ☐ Travel time (as compared to other modes, like driving)
- ☐ Cleanliness of the vehicle
- ☐ Reliability of service (i.e. on-time arrival)
- ☐ Cost
- ☐ I would not use this type of service
- ☐ Other (please specify)



Shoreline Transportation Master Plan (TMP) Survey 2

You can visit the project webpage at the following address for additional information on the TMP update process and to sign up for electronic notifications.

shorelinewa.gov/tmp

Thank you for your time and input. Please click Submit below.