

CITY COUNCIL AGENDA ITEM
CITY OF SHORELINE, WASHINGTON

AGENDA TITLE: North Central Interurban Trail – Additive Elements (cont.)
DEPARTMENT: Public Works
PRESENTED BY: Kirk McKinley, Dave Buchan

PROBLEM/ISSUE STATEMENT:

At the January 17, 2006 Council workshop, Council members raised a series of questions regarding staff proposals for both site improvements and lighting improvements along the North Central segment of the Interurban Trail. The purpose of this staff report is to answer Council questions and to recommend for Council consideration a revised package of additive elements for the North Central segment of the Interurban Trail.

Questions from Council:

Can LEDs be used for trail lighting?

Currently there is only one commercial LED lamppost available in the US. Unfortunately, the light output of these fixtures is too low for outdoor applications. LED technology is improving each year and hopefully within a decade an improved product will be available for outdoor use.

Can solar powered light posts be used for the Interurban Trail?

There is one manufacturer in the US that makes a solar powered light fixture available. This unit is supplied with either a fluorescent or low wattage metal halide light source. The solar module is placed above the fixture and is fairly large, creating an aesthetic consideration. These units require a battery system to store power generated during the day for use of the light at night. These fixtures still require an electric power connection so they can operate when solar power is insufficient to power the pole light. The biggest drawback to the use of this solar light post is its cost. The solar powered fixtures cost in the range of \$6,000 - \$7,000 each compared to a typical pedestrian scale fixture, such as staff is recommending for the North Central segment, at a cost of \$1,500 - \$2,000 each. Attached is a brochure on the solar light pole. While we have not yet been able to find any demonstration grant funds or reasonable solar options for this segment of the trail, we are actively examining a solar application for some of the lighting on the Aurora Bridge. We will continue to seek other solar opportunities for trail lighting as we proceed. In addition, we should be able to develop solar options for any new city hall that we build.

Bollard-style lighting was originally considered for trail lighting. Why is it not being recommended now?

Bollard-style lighting could be used to light the trail. However, a light source that is above standing head height provides illumination for facial recognition which is an important safety factor. It would typically require two to three bollard lights to create the same uniformity of light that comes from a pedestrian style pole light. This would add to the cost of the overall lighting installation. Also, the bollard-style lighting is more prone to vandalism than pole lighting.

What is the annual cost of operating trail lighting between N 175th and N 185th as proposed?

A Metal Halide exterior lighting system is currently being considered by staff for trail lighting. The Metal Halide lamp most appropriate for trail lighting is a 70-watt lamp that has a rated life of 20,000 hours. With the required ballast to operate the Metal Halide lamp the system requires a total energy demand of 95 watts per fixture. Assuming an average daily use period of 12 hours, the energy cost to operate forty (40) fixtures would be in the range of \$990 per year.

What is the size of the proposed Heritage Plaza space?

The area proposed to be part of the "Heritage Plaza" is 2.15 acres in size. This includes the area from the west margin of Ronald Place to 15' west of the west margin of Midvale Avenue North and from the north edge of the Walgreen's site to 50' south of the current N 180th connection between Aurora Avenue North and Midvale Avenue North. In the future, two additional parcels west of Ronald Place might be acquired by the City to add space to this Heritage site. Attached is an aerial photograph showing the proposed park and these future acquisition potentials.

Has the Park Board been apprised of this package of additive elements? And if so, what is their opinion of these improvements?

At the Park Board's meeting of Thursday, January 26, the Board reviewed the proposals for both site improvements and lighting for the Interurban Trail. After review and discussion the Board voted unanimously to "enthusiastically endorse" the package of additive elements for the Interurban Trail.

What is the status of possible use of the red bricks removed from Ronald Place?

Seven pallets of the red bricks removed from the Walgreen's site are now stored at the City's Hamlin Park storage yard. Staff evaluated the possible use of the bricks to line each edge of the new Interurban Trail. However, this idea was rejected because the red bricks when wet are very slippery, creating a potential safety hazard for cyclists. The red bricks can ultimately be used in the plaza area at the proposed Heritage Park site.

Revisions to Proposed Additive Elements:

Based on Council discussion of the additive proposals for the North Central segment of the Interurban Trail on Tuesday evening, January 17, 2006, staff has made a series of proposed changes to that original list of Additive Elements. These changes are now submitted to Council for their consideration.

Site Improvements:

- 20-stall parking lot – N 178th and Midvale.....\$76,000.

Staff recommends no change to this element

- New Sidewalk (N 185th and Midvale – east side).....\$31,000.

Staff recommends no change to this element

- Trail Safety and User Enhancements.....\$150,000.

Staff is recommending the following with regard to Enhancements:

Staff is recommending that the original recommendation of \$150,000 for trail-wide improvements/upgrades be increased to \$200,000. This program would provide a series of improvements along the entire three mile section of the trail. This amount would be spent primarily to construct connections from neighborhoods and from businesses to the trail system, for lighting dark spots along the trail, and for other features/amenities as needed. Staff will work with the Parks, Recreation and Cultural Services Board to outline a program over the next several months, and then report back to Council with priorities and cost estimates. We will need to work with Seattle City Light (SCL), neighbors and businesses to ensure that the lighting and future connections are workable both with SCL and with residents. Lighting issues include shielding, hours of operation, and SCL policies including operations and maintenance.

The initial staff discussions related to the design of the neighborhood and business connections is to make the connections with asphalt paths in a size and configuration necessary to make a recognizable, but not overwhelming connection. Below is a list of existing connections, soon to be constructed connections, and others that have been identified over the last few years by businesses, or by neighborhoods. This list is by no means complete, and outreach would occur via community meetings to solicit other ideas. The connections are presented in sequential order starting from N. 145th north to N. 205th. The highlighted/shaded locations would be considered for funding under this program. The rest are either funded, need to wait for developments to submit for permits, or are significant enough to warrant a standalone project budget via the Capital Improvement Program. Should a redevelopment project be permitted or constructed within the next two years, and funding is still available, staff recommends that they be included.

Location/Project	Description and Comments	Status
N. 145 th Trailhead	Trailhead with parking	Existing
N. 148 th	Connection from Westminster Neighborhood to trail	To be constructed in 2006 by City
N. 149 th	Connection from street end east of trail on City ROW	Existing
Choi and Seattle Ski Redevelopment at N. 150th	Connection from office/retail/condo project to trail	Wait for redevelopment
Ryu Plaza @ N. 151st	Connection from rear access drive to trail	New
McDonalds	New project connection to trail and	Wait for

Restaurant @ N.152nd	outdoor seating	redevelopment (2007)
Denny's and Pizza Hut	Direct access to trail	Included in Bridge contract (2006 construction)
On N. 157 th unused ROW to Midvale	Connection to trail and bridge on City ROW (bridge includes stair access to ROW) – work with neighborhood to ensure support	New
On N. 160 th to Midvale	Small section of sidewalk or asphalt walkway needed to connect to trail on south side	New
Watermark Credit Union @ N. 164 th (eastside of Aurora)	Development proposes connection from Aurora to edge of SCL as part of development. City to make connection to trail.	Wait for redevelopment (2007)
On both sides of N. 165 th to Aurora	Sidewalk connection part of Aurora project	Included in Aurora contract (2006)
N. 166 th east of trail	Stairway to street end connection constructed as part of trail implementation. ADA ramp needs to be built.	Existing and 2006
On both sides of N. 167 th to Aurora	Sidewalks exist	Existing
Hollywood Casino @ N. 169th	Connection provided by City as access to Cemetery	Existing
N. 174 th /Ronald	Connection to trail provided by TOP Food project	Existing
On both sides of N. 175 th to Aurora and to east	Sidewalk connections exist to trail	Existing
N. 192 nd at Echo Lake property	Redevelopment project to provide sidewalk along north side of 192 nd connecting trail to Aurora	Wait for redevelopment
Echo Lake property	Redevelopment may provide connection to trail at south end of lake	Wait for redevelopment
N. 195 th , Ashworth to Trail	Sidewalk connection to trail	Future CIP
Ballinger Commons connections	Several connections internal to Ballinger Commons exist. Consider bus stop connection on Meridian @ 202 nd to trail.	Existing and Future

The North Central Trail project will also include several connections from abutting properties and from Aurora and Midvale to the trail system. Staff may also pursue

improved connections to the remainder of the Ballinger Commons trail from neighborhoods west and south of the Commons project to tie into the Interurban section within Ballinger Commons.

North Central Lighting Improvements:

Trail Lighting between N 175th and N 185th\$372,500

Staff is recommending that electrical infrastructure be placed along the entire length of the trail from N 175th to N 185th. Further, staff recommends that the original proposal of 60 light fixtures be reduced to a maximum of 40 fixtures at this time. At a later time the additional twenty fixtures can be placed in the area of the proposed Heritage Park where a concentration of light would be recommended. The revised cost of this element is now estimated at \$286,250.

Trellis lighting at N 185th and Aurora.....\$29,500

Staff recommends no change to this element.

Tivoli lighting at N 178th and Midvale\$44,000

Staff recommends that this element be eliminated at this time.

Midvale Pedestrian Lighting.....\$160,000

Staff recommends that this element be eliminated and that the City initiate a service request with Seattle City Light to install shielded cobra-head fixtures on existing power poles along this corridor.

SUMMARY:

Revised Package of Additive Elements for the North Central Segment:

Site Improvements:	Original	Revised
• 20-stall Parking Lot – N 178 th and Midvale.....	\$76,000	\$76,000
• New sidewalk (N 185 th and Midvale – east side).....	\$31,000	\$31,000
• Trail Safety and User Enhancements.....	\$150,000	\$200,000

North Central Lighting Improvements:

Trail lighting between N 175 th and N 185 th (infrastructure and forty fixtures)	\$372,500	\$286,250
Trellis Lighting (N 185 th and Aurora).....	\$29,500	\$29,500
Tivoli Lighting	\$44,000	- 0 -
Midvale Pedestrian Lighting.....	\$160,000	- 0 -
Proposed Cost	<u>\$863,000</u>	<u>\$622,750</u>

RECOMMENDATION

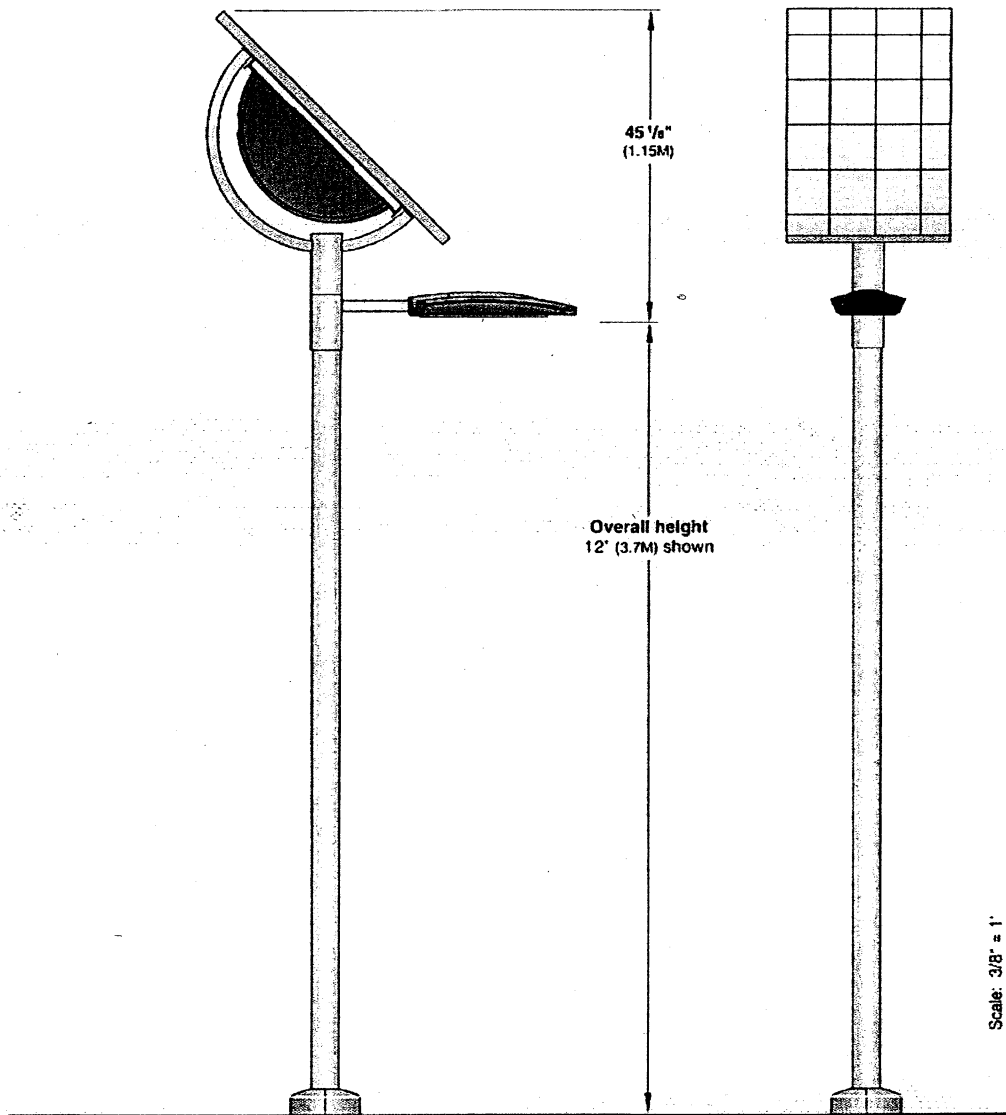
Staff recommend that Council direct staff to design and solicit additive bid elements for the revised package of proposed additive elements to the North Central segment of the Interurban Trail.

Approved By: City Manager  City Attorney _____

Sonne

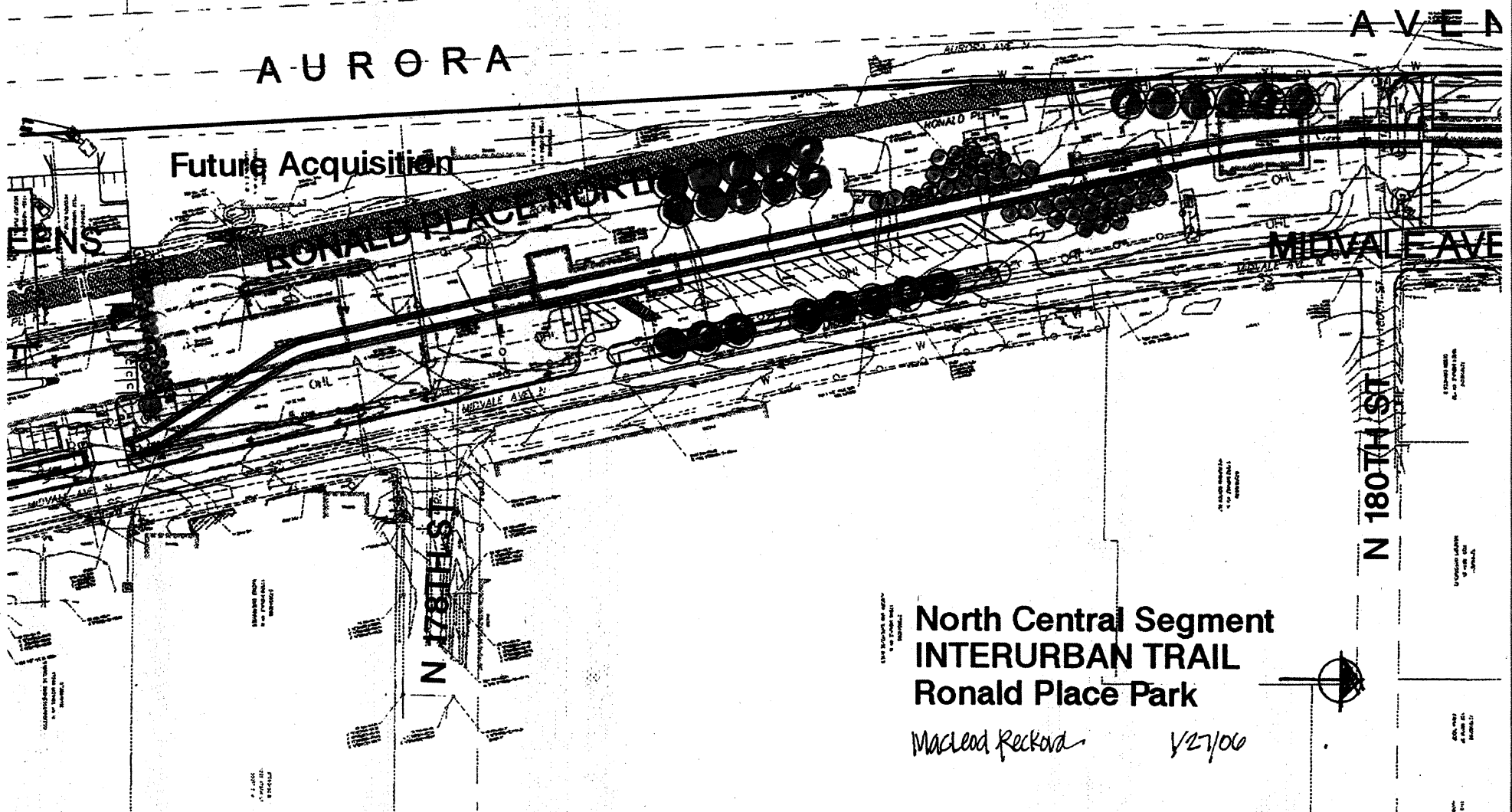


Mounting



SELUX Corp. © 2003
 PO Box 1060, 5 Lumen Lane
 Highland, NY 12528
 TEL: (845) 691-7723
 FAX: (845) 691-6749
 E-mail: seluxus@selux.com
 Web Site: www.selux.com/usa
 SDS-0704-03

In a continuing effort to offer the best product possible, we reserve the right to change, without notice, specifications or materials that in our opinion will not alter the function of the product. Specification sheets found at www.selux.com/usa are the most recent versions and supercede all other printed or electronic versions.



North Central Segment
INTERURBAN TRAIL
Ronald Place Park

Macleod Reckord

1/27/06

