



CURRENTS

News from the City of Shoreline Volume 18 No. 8

October 2016

City responds to increasing human service needs

Healthy communities have a strong foundation that provides support to residents in good times and bad. Shoreline is just such a community. Our vibrant neighborhoods, strong schools, and active social services organizations provide an environment where people have access to many sources of support. One way Shoreline maintains this strong foundation is through annual funding to non-profit human services agencies that serve our residents. We fund two local agencies and eight regional agencies that respond to over 10,000 people each year. This funding totals just over \$350,000 annually.

Hopelink and the Center for Human Services are our two largest partners and are located in Shoreline. Together these two agencies meet a range of need from housing for families to counseling and substance abuse treatment, from food and financial assistance in times of crisis to services for families with young children. Agencies located around Seattle and King County fill out the spectrum of services, including supporting homebound seniors; and providing information, referral, and counseling for victims of sexual assault and other trauma.

These ten agencies together with the City provide Shoreline residents with access to services they need to remain resilient in the face of emergencies as well as make connections to resources that will provide long term support. These agencies include:

- Catholic Community Services – Volunteer Chore Services
- Crisis Clinic - 211 and the Crisis Line
- Child Care Resources - Child Care Quality Improvement Services
- Harborview - Sexual Assault and Traumatic Stress Services
- King County Sexual Assault Resource Center
- Lake City Partners/Prince of Peace – Winter Shelter
- Sound Generations – Meals on Wheels and Volunteer Transportation for seniors
- Wonderland Developmental Center – Birth to 3 year old screening and services

Over the past several years, homelessness and the impacts of high housing costs have become more evident. The number of school children who are homeless in the Shoreline School District has risen from just under 275 to over 425 in the most recent school year. Requests for rent and utility assistance have doubled. And the One Night Count of the Homeless increased by over 100% in North King County. In response to this and to larger trends, the City Council has added \$52,000, or 20%, to the City's annual funding for human services. The focus for these additional funds is to meet basic needs and counseling, primarily as they relate to addressing the impacts of homelessness.



Facility maintenance

Page 3



Adopt-a-drain program

Page 5



Fall events

Page 7

CONTACT YOUR Shoreline City Council



MAYOR CHRIS ROBERTS
(206) 801-2205
croberts@shorelinewa.gov



**DEPUTY MAYOR
SHARI WINSTEAD**
(206) 801-2201
swinstead@shorelinewa.gov



WILL HALL
(206) 801-2207
whall@shorelinewa.gov



DORIS McCONNELL
(206) 801-2204
dmcconnell@shorelinewa.gov



KEITH McGLASHAN
(206) 801-2203
kmcglashan@shorelinewa.gov



JESSE SALOMON
(206) 801-2202
jsalomon@shorelinewa.gov



KEITH SCULLY
(206) 801-2206
kscully@shorelinewa.gov

CONTACT ALL COUNCILMEMBERS:
(206) 801-2213
council@shorelinewa.gov

CITY COUNCIL MEETINGS:
Mondays at 7:00 p.m.
Shoreline City Hall, Council Chamber
Agendas: shorelinewa.gov/councilmeetings

City of Shoreline's Proposition 1:

Maintenance and operation levy for basic public safety, parks & recreation, and community services

On July 25, the City Council adopted Resolution No. 389, placing restoration of the 2010 six-year maintenance and operations levy for basic public safety, parks and recreation, and community services on the November 8 ballot.

What will Shoreline Proposition 1 do?

If approved by Shoreline voters, Proposition 1 will help fund police and emergency services, including neighborhood safety and traffic patrols; help fund maintenance of parks, trails, playgrounds/playfields, and the Shoreline Pool; and continue funding community services for seniors, youth, and individuals and families in need.

If approved by voters, what would it cost the average Shoreline homeowner?

The average Shoreline homeowner would pay on average approximately \$7 more per month (for a home with a median assessed value of \$353,000) over the next six years to maintain current levels of police, emergency protection, parks, recreation, and community services. Proposition 1 would reset City's regular property tax levy rate below the legal limit of \$1.60 at a rate not to exceed \$1.39 per \$1,000 of assessed value in 2017.

How long is this levy?

Proposition 1 is a six-year levy.

How will the levy be determined for the years 2018-2022?

Any increase in the levy would be limited to the inflation rate for 2018-2022 (Seattle CPI-U). Based on the regional economists' projections, the average CPI increase over this period will be approximately 2.3% per year.

For more information on Shoreline Proposition 1, visit shorelinewa.gov/prop1 or contact Administrative Services Director Sara Lane at (206) 801-2301 or slane@shorelinewa.gov.

DRIVE SAFELY

Recently, Shoreline Police set up a cell phone emphasis patrol to catch people illegally using their cell phones while driving. Shoreline Police pulled over approximately 100 drivers and issued 70 citations in one day.

Over the past few years, the number of total and injury collisions related to distracted and inattentive driving has been on the rise. Much of the distraction has to do with people using their cell phones while driving. Taking your eyes off the road to look at your phone, even for just a few seconds, can have tragic consequences.

**DRIVERS ARE
23 TIMES
MORE LIKELY TO CRASH
WHILE TEXTING**

PUT YOUR PHONE DOWN!

NEIGHBORHOOD PARKS, NATURE TRAILS, AQUATICS, THE ARTS...

What do YOU want for Shoreline's Parks, recreation, and cultural services?

SHAPING OUR FUTURE WORKSHOPS

Parks, Outdoor Recreation & Public Art in Neighborhoods & Light Rail Station Subareas

Shoreline City Hall Council Chamber
• Tuesday, Nov. 1, 7:00 - 9:00 p.m.

Aquatic/Community Center Facility Planning - Aquatic, Recreation & Cultural Needs

Shoreline City Hall Council Chamber
• Tuesday, Nov. 15, 7:00 - 9:00 p.m.

BRINGING IT ALL TOGETHER

Public Open House

Shoreline City Hall Council Chamber
• Saturday, Jan. 7, 10:00 a.m. - 12:00 p.m.

To learn more about the work to update Shoreline's plan for Parks, Recreation and Cultural Services (PROS Plan), visit shorelinewa.gov/prosplan or contact Parks Project Coordinator Maureen Colaizzi at mcolaizzi@shorelinewa.gov or (206) 801-2603.

SECURING OUR FOUNDATION SHAPING OUR FUTURE

shorelinewa.gov/prosplan

Securing our foundation through facility maintenance

Another great, busy, fun recreation-filled summer is in the books. Camps, classes, tournaments, and concerts were packed, leaving folks with new friends and good memories. What all these programs also left were some facilities that needed a bit of TLC. Spartan Recreation Center, Richmond Highlands Recreation Center, and Shoreline A/B synthetic turf fields were all recipients of much-needed maintenance this summer. The City's maintenance focused on ensuring patron safety, prolonging the life of the facilities, and offering patrons the safest, cleanest facilities possible.

Frequent Spartan Recreation Center users may have noticed a three-day closure in early September to deep clean the gymnasium as well as recoat the gym and dance room floors. In refinishing the floors, we are both extending the life of the well-used facility and ensuring a safe and clean facility for patrons.

The City also completed work on Shoreline A/B synthetic turf fields with the same goals in mind. The turf itself was cleaned and groomed, and new turf goal boxes installed in early summer. In addition, crews replaced two light poles. Both projects worked to not only extend the life of the much loved fields, but in doing so provide the

safest playing area possible.

Every week, Richmond Highlands Recreation Center, located two blocks from Shorewood High School, hosts over 60 hours of programs and rentals. To improve safety, the City removed the front hedges to improve visibility of those entering and exiting the facility. In addition, crews resurfaced the parking lot, gave the roof a much needed cleaning, refinished the gym floor, and repainted the interior for the first time in a decade.

All of this maintenance work is necessary to ensure the facilities continue to meet the needs of the community for years to come.



Richmond Highlands Recreation Center front hedges were removed for increased visibility. In addition to interior maintenance, the parking lot was resurfaced and restriped.

2017 Budget Adoption Schedule

Shoreline's budget adoption process began with a preliminary 2016 Budget update presentation to the City Council at its September 19 meeting. The full schedule is below. All meetings are on Mondays at 7:00 p.m. in the Council Chamber at City Hall.

October 10

Transmittal of Proposed 2017 Budget

October 17

Department Budget Reviews

October 24

Continued Department & CIP Reviews

November 7

Public Hearing on 2017 Budget & CIP

November 14

Public Hearing on Revenue Sources & 2017 Property Tax Levy

November 21

Adoption of 2017 Property Tax Levy and 2017 Budget

For more information and to view budget documents, visit the City's website at shorelinewa.gov/budget.



Photo Credit: Aaron Allfen

Director Morgan Neville and SIFF Chief Curator and Festival Director Carl Spence attend the Silk Road opening at the Seattle International Film Festival in Shoreline.

SIFF in Shoreline

The Seattle International Film Festival (SIFF) announced that it will return to Shoreline in May of 2017 after a wonderful Shoreline experience earlier this year. This was the first year that Shoreline was a SIFF venue.

Between May 27 and June 4, Shoreline audiences warmly received 25 films from around the globe. Highlights included *The Architect* (USA), a film largely cast at Shoreline City Hall; opening night's *Tenth Man* (Argentina); and audience favorites *Big Sonia* (USA), *Truman* (Spain), and *The Music of Strangers: Yo-Yo Ma and the Silk Road Ensemble* (USA).

One of the brightest stars of the festival was the newly renovated 369-seat Shoreline Community College Campus Theater. Festival organizers praised the new 4K digital projector, sound system, and technical staff. And audiences loved the comfortable seating and ample free parking.

For more information about SIFF visit siff.net.

DON'T FORGET TO

VOTE

BALLOTS MUST
BE POSTMARKED
OR RETURNED BY
NOVEMBER 8



New ballot drop box in Shoreline

Save a stamp and drop your ballot off at King County Elections Ballot Drop Box located at the Shoreline Library, 345 NE 175th Street.

ADOPT-A-DRAIN

Help prevent flooding and protect Shoreline water quality

Leaves, pine needles, trash, and snow accumulate on top of storm drains, blocking rain water from entering, and sometimes causing large puddles to form in our neighborhoods. City crews sweep streets to keep drains clear, but we could use your help! During the months of October through March, residents can volunteer to “adopt” a storm drain or multiple drains, and remove leaves and other debris after storm events. It is also a great way for students to fulfill volunteer requirements.

By joining the Adopt-A-Drain Program, you help:

- Prevent localized flooding in your neighborhood.
- Improve traffic flow and maintain pedestrian access, especially for children and the elderly.
- Protect fish and other wildlife by keeping pollutants from entering streams, lakes, and Puget Sound.

To learn more about the program, or to sign-up, please visit shorelinewa.gov/adopt-a-drain or call Surface Water Utility at (206) 801-2450.



Help prevent flooding in your neighborhood by volunteering to keep stormwater drains clear.

DID YOU KNOW?

Single-family residences that currently do not have a yard debris cart will receive one for food scraps and yard debris by March 1, 2017. If you recycle your food scraps in the green cart, you may be able to get a smaller garbage cart and save money!

Have questions? Call (206) 763-4444 or email shoreline@recology.com about services. For questions about mandatory collection service requirements, call (206) 801-2350 or email trashtalk@shorelinewa.gov.

Celebrate Trees with Diggin' Shoreline

Free community movie

Fern Gully: The Last Rainforest

1:00 p.m. – 4:00 p.m.

Saturday, Nov. 5

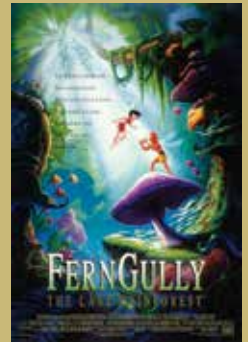
Shoreline City Hall

Diggin' Shoreline invites you to a free community showing of the movie, *Fern Gully: The Last Rainforest*. Doors open at 1:00 pm, and the movie will play twice (1:15 p.m. and 2:30 p.m.). Come early; get your bag of free organic popcorn. There will be kid-friendly activities and admission is free!

This animated film, popular with adults and children alike, tells the story of the struggle to save trees from destruction, emphasizing the role of life-giving trees in sustaining the quality of life for people, plants, and animals.

Before, during, and after the movie, experience the interactive exhibits and learn from local environmental experts about the many characteristics and benefits of trees, and how to grow, plant, and preserve them for future generations. Participating exhibitors include City of Shoreline PRCS Tree Board, Friends of Piper's Creek Orchard, Interurban Tree Preservation Society, Kruckeberg Botanic Garden, Northwest Basket Weavers, Plant Amnesty, Seattle Audubon, and more!

This presentation by Diggin' Shoreline is made possible through partial funding by a City of Shoreline Environmental Services Mini-Grant.





A BIG CAMP SHORELINE THANK YOU!



We would like to thank the 440 campers who joined us this summer at our three Camp Shoreline locations (Spartan Recreation Center, Highland Terrace Elementary School, and Hamlin Park). All camps were full each week, and together with our 40 Camp Shoreline counselors, we built friendships and created memories that will last a lifetime.

The popularity of Camp Shoreline continues to grow each year. For 2016, we expanded the Camp Shoreline program to include a new five-week outdoor camp at Hamlin Park for youth ages 10-12. This new addition was a huge success with campers hiking daily and discovering new skills like camp-

fire/shelter building and animal/plant identification.

Camp Shoreline also continued to offer our Camp Excel program for youth with severe and profound disabilities giving them the opportunity to have the same awesome Camp Shoreline experience.

Camp parents cannot say enough about the impact our summer camp program has on their children's lives. Often, campers go on to become "Counselors-In-Training" and eventually to be camp counselors themselves.

We hope you will join us at one of our School's Out Camps during the Shoreline School District breaks. Remember that camps fill fast, so register early at shorelinewa.gov/registernow.

Photos

Top: Little Playground Pals. Middle: Camp Excel. Bottom: Outdoor Camp

Electric vehicle now part of City fleet

On July 27, the City took possession of its first electric vehicle – a 2016 Nissan Leaf. The new electric powered car represents the City's commitment to identify environmental opportunities to reduce dependence on petroleum based fueling sources for its Fleet Program.

The purchase of the Nissan Leaf replaces a vehicle that had reached the end of its useful life and supports City Council's goal for sustainability. The new car is 100% electric and includes a 30kWh battery allowing the car to travel up to 107 miles on a full charge. The larger battery allows greater use of the vehicle for City business operations. The City also expects the car to require less regular scheduled maintenance costs that are typically programmed for non-electric powered vehicles.

In addition to the purchase of the new Leaf, the City has also installed five new electric vehicle-charging stations in the City Hall garage. These charging locations allow efficient and sustainable travel to and from the Shoreline City Hall for residents, visitors, and City staff.



Mayor Chris Roberts with the City's newest fleet vehicle, a 2016 Nissan Leaf

FALL EVENTS

Monster Mash Dash 5K

WHEN: Saturday, Oct. 8 - 8:00 a.m. registration; 9:00 a.m. race start

WHERE: Shoreline City Hall, 17500 Midvale Avenue N

Costumed family 5K fun run and walk along Shoreline's Interurban Trail. Prizes for top runners and best costumes. Registration info at shorelinewa.gov/5K.



Hamlin Haunt

WHEN: Friday, Oct. 21, 6:00 – 8:30 p.m.

WHERE: Hamlin Park, 16006 15th Avenue NE

Family Halloween event. Spooky songs and stories, marshmallows around a campfire, hay wagon, and Halloween games. Free event!



Indoor Playground Halloween

WHEN: Monday, Oct. 31, 9:30 – 11:30 a.m.

WHERE: Spartan Recreation Center, 202 NE 185th Street

It's the cutest show in town as children ages 1 – 5 arrive in costume to play games and participate in hands-on projects. \$3 per child.



Veterans Day Celebration

WHEN: Friday, Nov. 11, 2:00 – 4:00 p.m.

WHERE: Shoreline City Hall, 17500 Midvale Avenue N

Please join the Shoreline Veterans Association and the City of Shoreline in honoring all veterans and current military personnel.



Holiday Crafts Market

WHEN: Saturday, Nov. 19, 9:00 a.m. – 4:00 p.m.

WHERE: Spartan Recreation Center, 202 NE 185th Street

Begin your holiday shopping at our 12th annual market where 65 juried artisans will be selling their handmade crafts and wares. There will be two rooms filled with a winter wonderland of beautiful gifts.



More information:
shorelinewa.gov/calendar



Monster Mash Dash participants finishing strong

Sound Transit light rail station design workshops

Be on the lookout for an announcement from Sound Transit about a series of three public meetings coming up in mid-November. There will be a meeting for the Seattle/Shoreline stations, the Mountlake Terrace station, and the Lynnwood station. These meetings will be an excellent opportunity to meet and speak directly with Sound Transit's project team about the two Shoreline stations at NE 185th Street and NE 145th Street. Engineers, station designers, architects, and property and noise experts will be at the workshops. Information about minor changes to the 1st Avenue NE entrance to Ridgcrest Park will also be available. A short station design presentation is expected and then an opportunity to walk around and review materials and discuss them with project staff.

Meeting details including dates, times, and locations will be coming in October about the November station design public workshops. For more information:

Contact Community Outreach

Phone: (206) 398-5300

Email: lynnwoodlink@soundtransit.org

Sign up for alerts online

soundtransit.org/LLE

Connect with Sound Transit social media

twitter.com/soundtransit

facebook.com/SoundTransit

October 2016 Vol. 18 No. 8
**CITY OF SHORELINE
CURRENTS**

Currents is produced by the
Shoreline City Manager's Office
Contact the City:
(206) 801-2700

**Alternate formats
available upon request**



Currents is printed on
post-consumer recycled
paper with soy-based ink.



Get the latest news at
shorelinewa.gov and
follow us on social media



17500 Midvale Avenue N
Shoreline, WA 98133-4905

PRSRT STD
US Postage
PAID
Seattle, WA
Permit No. 248

ECRWSS
POSTAL CUSTOMER

MONSTER MASH DASH 5K

RUN FOR YOUR LIFE

Annual family-friendly 5K run/walk

SATURDAY
THE **8th**
of
OCTOBER

8:00 A.M. REGISTRATION &
COSTUME PHOTOS

9:00 A.M. RUN/WALK START

9:30 A.M. RUNNER AWARDS

10:00 A.M. COSTUME AWARDS

COSTUMES PRIZES MUSIC ACTIVITIES

REGISTER: SHORELINEWA.GOV/5K

