



CURRENTS

News from the City of Shoreline Volume 18 No. 6

September 2016

Shoreline Police work to build strong community relations

Over the past year, our nation has been struggling with the issues of police conduct and community relations. Trust between police and community members, particularly in African-American communities, is fractured in many parts of the country. While this is not a new issue, the advent of body cameras and camera phones has thrust it into the spotlight for many people.

Building trust and treating all members of our community with dignity is something the City and the Shoreline Police take very seriously. We are taking proactive steps through training, outreach, and awareness, to ensure residents and police treat each other with the respect and the dignity they deserve.

Training

Each member of the Shoreline Police Department completes annual training on biased based policing and bi-annual ethics training. Shoreline Police has comprehensive policies and follows best practices regarding biased based policing. The Department continually looks for ways to build and maintain trust with members of the community and appreciate constructive feedback on what's working well and areas where improvement can be made. If you have a complaint or compliment about one of our officers, visit shorelinewa.gov/police.

The police practice and promote LEED principles: Listen and Explain with Equity and Dignity. They are fundamental principles in justice based policing and promote the professionalism, compassion, and demeanor we want members of the Shoreline Police Department to display. The LEED principles can often improve the quality and outcome of interactions between the police and citizens while over time strengthening community trust and confidence in their police department.

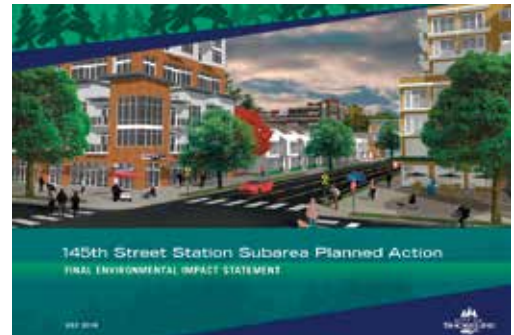
Outreach

In addition to training, Shoreline Police are also engaged in community outreach through a variety of different programs.

School Resource Officer

One of our long-standing programs is having a School Resource Officer (SRO) maintain a presence at Shoreline's two public high schools throughout the school year. The SRO provides security, mentoring, and teaches a variety of classes to students and staff, including anti-bullying curriculum and personal safety. During

continued on page 3



145th Street Station Subarea Zoning Page 2



Shoreline murals Page 4



Surface Water Master Plan update Page 7

CONTACT YOUR Shoreline City Council



MAYOR CHRIS ROBERTS
(206) 801-2205
croberts@shorelinewa.gov



**DEPUTY MAYOR
SHARI WINSTEAD**
(206) 801-2201
swinstead@shorelinewa.gov



WILL HALL
(206) 801-2207
whall@shorelinewa.gov



DORIS McCONNELL
(206) 801-2204
dmcconnell@shorelinewa.gov



KEITH McGLASHAN
(206) 801-2203
kmcglashan@shorelinewa.gov



JESSE SALOMON
(206) 801-2202
jsalomon@shorelinewa.gov



KEITH SCULLY
(206) 801-2206
kscully@shorelinewa.gov

CONTACT ALL COUNCILMEMBERS:
(206) 801-2213
council@shorelinewa.gov

CITY COUNCIL MEETINGS:
Mondays at 7:00 p.m.
Shoreline City Hall, Council Chamber
Agendas: shorelinewa.gov/councilmeetings

City Council adopts resolution placing restoration of levy on November ballot

In 2010, Shoreline voters approved a six-year maintenance and operations levy to help fund basic public safety, parks and recreation, and community services. That levy will expire on December 31 of this year.

On July 25, the Shoreline City Council adopted Resolution No. 389, which places restoration of the six-year levy on the November 8 ballot. If approved by Shoreline voters, Shoreline Proposition 1 will help fund and maintain current levels of police and emergency service, including neighborhood safety and traffic patrols; school safety programs; and community crime prevention programs. It would also help fund park and trail maintenance; playgrounds and play equipment; ball fields, restrooms and the Shoreline pool; and preserve recreation programs for youth, families, and seniors. Proposition 1 would also continue funding for community services for seniors, youth, and individuals and families in need.

If Proposition 1 is approved, a homeowner with a median home value (\$353,000) would pay on average \$84 more a year (\$7 per month) to maintain basic city services.

For more information on Shoreline Proposition 1 visit shorelinewa.gov/prop1 or contact Administrative Services Director Sara Lane at (206) 801-2301 or slane@shorelinewa.gov.

Upcoming dates for 145th Street Light Rail Station Subarea planning

The City has issued the Final Environmental Impact Statement (EIS) for the 145th Street Station Subarea Plan. The document is available at shorelinewa.gov/145feis, along with the other materials for the Subarea Plan. The Final EIS studied four zoning scenarios and phasing for three of them. Council is scheduled to discuss and adopt the subarea package this month. Council may adopt one of the zoning scenarios as studied, or could choose to amend one of the studied scenarios.

To provide comments to the Council, you can attend one of the upcoming meetings and provide it during public comment, or you can email the Council at council@shorelinewa.gov.

Upcoming dates:

- **Monday, Sept. 12, 7:00 p.m.**
City Council meeting: Study Session on Subarea Plan package
- **Monday, Sept. 26, 7:00 p.m.**
City Council meeting: City Council adopts Ordinances 750, 751, and 752*
**Council adoption may extend into October if needed.*

If you would like to see the different zoning maps Council and the Planning Commission have studied throughout the process, you can find them at shorelinewa.gov/145station.

SHORELINE POLICE WORK TO BUILD STRONG COMMUNITY RELATIONS

(continued from page 1)

the coming school year, the SRO and other officers hope to meet with different student organizations, particularly those representing minority communities, to exchange information, answer questions, and share concerns. More importantly, it will be an opportunity for police and students to get to know each other in a more relaxed, social setting and to better humanize their relationship.

Nurturing Trust Workshops

In 2014, Shoreline Police began offering a workshop series for families entitled Nurturing Trust, which helps parents learn how to form safe communities for their children. It also helps individuals in historically underserved communities build strong relationships with law enforcement. Offered in both English and Spanish, the workshops have proven to be very popular, particularly with our Spanish speaking population.

Addressing the needs to reinforce trust and working relationships with the community, police help participants learn about laws and basic police procedures on important issues that may affect any family. For our Spanish

language series, police deliver information in the context of the Latino/Hispanic culture, addressing the differences in belief systems, customs, language, and perspectives.

RADAR

Another concern that we have seen arise over the past several years has been how police interact with people with mental health issues and cognitive disorders, especially when responding to individuals in crisis. These kinds of encounters are often stressful and dangerous for both individuals and police. The outcomes can be inspiring or tragic, and are largely determined by the skills, approaches, and tools used by officers at the scene.

The Shoreline Police Department is becoming a national leader on this issue. It is currently developing a program called RADAR (Response Awareness, De-escalation, and Referral) to improve police response in situations where police encounter an individual with mental health issues in crisis. Officers will work with individuals and their circles of support (parents, caregivers) to develop strategies that will help officers respond more effectively, and

humanely, to challenging situations.

Awareness

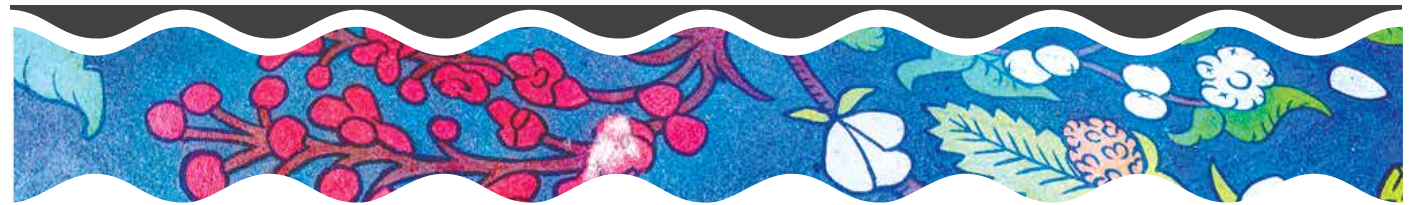
One of the most important things we can do to build trust is to have an awareness of who is in our community. To ensure that people from all backgrounds are included in the life and governance of the City, the City recently hired its first ever Diversity and Inclusion Coordinator. The Diversity and Inclusion Coordinator will lead the City's efforts to engage and include members of diverse cultures and ethnicities more actively in the life of the City. This will include working closely with Shoreline Police and community members to ensure there is effective two-way communication and mutual understanding.

What can you do?

Building and maintaining trust is a continuous effort. The City and Shoreline Police are committed to that effort. You can help by getting to know your neighbors, forming a Shoreline Watch group, and inviting Shoreline Police to a meeting to share information, listen to concerns, and build relationships. Visit shorelinewa.gov/police for more information.

Nurturing Trust workshop participants receive their completion certificates





Murals around SHORELINE



There are 14 different neighborhoods in the City of Shoreline, each with its own unique character. Sometimes, neighborhoods express that uniqueness artistically. When drivers turn from NE 205th Street onto 1st Avenue NE, a large mural by Andy Eccleshall depicting Echo Lake welcomes them. There is no question they have just entered the Echo Lake Neighborhood.

The Parkwood Neighborhood Association has decided to define its identity and beautify the neighborhood with a series of murals. In 2015, artist Michiko Tanaka painted a vibrant wetlands scene on the Twin Ponds bathroom. This

year, artist Sara Snedeker worked with neighbors to paint two traffic-calming murals on streets in Parkwood. The first, midblock on Densmore Avenue North and N 157th Street, depicts native plants. The second, at the intersection of N 149th Street and Corliss Avenue N, features water-fowl and salmon. The City's Neighborhood Mini-Grant Program provided funding for these projects.

Other murals around town include the new mural on the side of the Shoreline Pool and the Shoreline Farmers Market octopus mural painted on the Sears parking lot at Shoreline Place. Local artist Sara Snedeker also painted these two murals.



Top: Parkwood Native Plants street mural and Splash of Colors at Shoreline Pool by Sarah Snedeker

Center: Left, Octopus' Garden by Sara Snedeker. Right, Echo lake Mural by Andy Eccleshall.

Bottom: Left, Parkwood neighbors with artist Michiko Tanaka. Right, Parkwood neighbors with artist Sara Snedeker.



Final Fall RecycleFest



Saturday, Sept. 17
9:00 a.m. - 3:00 p.m.
Sears Upper Back Parking Lot
15711 Aurora Avenue N

With an expanding variety of local recycling options, and in anticipation of the opening of Recology CleanScapes' customer service storefront which will accept some difficult-to-recycle items beginning in 2017, the City will hold only two more RecycleFests—one in fall 2016, and the last event in spring 2017.

RecycleFests are free for all Shoreline residents, and provide a place where residents can bring materials, such as foam blocks and carpet for recycling. Residents can also bring bicycles in any condition. Recology CleanScapes donates the bikes to Bike Works. The City will mail event flyers providing a detailed list of accepted items to all residents.

Bring the event flyer or your driver's license with a Shoreline address as proof of residence. Note that only pick-up trucks or smaller vehicles will be allowed to enter. If you are hauling items on behalf of a neighbor or want to bring a trailer to the event, you must call (206) 801-2455 for approval prior to the event.

King County Solid Waste Division and the Washington State Department of Ecology sponsor the event. For more information, contact the Shoreline Customer Response Team at (206) 801-2700 or visit the Fall RecycleFest event page at shorelinewa.gov/calendar.

DID YOU KNOW?

The average single-family household throws away about 48 pounds of food scraps and food-soiled paper every month. That is nearly 30% of what we throw away in our weekly garbage! Vegetable and fruit trimmings, meats, fish and poultry scraps and bones, plate scrapings, eggshells, coffee grounds, paper towels and napkins, and even greasy pizza boxes can all be recycled in your green yard debris cart and will help create nutrient-rich compost for our environment! For more information, please visit shorelinewa.gov/environmentalservices or contact Surface Water & Environmental Services at (206) 801-2450.

City Council unanimously supports ST3 measure on November ballot

On August 8, 2016, the City Council unanimously voted to support Sound Transit's ST3 ballot proposition Number 1 to provide the expansion of light rail, commuter rail, and bus rapid transit service throughout the region.

ST3 provides the next phase of high-capacity transit improvements for central Puget Sound. With this plan, the light rail system will more than double again to 116 miles with over 70 stations. Light rail will expand north to Everett; south to Federal Way and Tacoma; east to downtown Redmond, south Kirkland, and Issaquah; and west to Ballard and West Seattle.

ST3 will also invest in Bus Rapid Transit (BRT) in two corridors: connecting Lynnwood to Burien via I-405 and SR 518 to serve Eastside cities as well as Tukwila and Burien; and on SR 522

between Bothell and Shoreline with service extending to Woodinville, and connecting to Link light rail via Northeast 145th Street.

The City has strongly and consistently advocated for Bus Rapid Transit service along 145th Street. It is necessary to ensure transit success in conjunction with the light rail station at 145th Street.

"The 145th street light rail station will be the primary access point for many of our residents and our neighbors," stated Shoreline Mayor Chris Roberts. "Bus Rapid Transit on SR 522 and 145th Street will help ensure traffic to and from the station runs smoothly and efficiently. Inclusion of the project made it easy for Council to unanimously support the Sound Transit 3 package."

Shoreline, along with the Cities of Bothell, Kenmore, Lake Forest Park, and

Woodinville, jointly advocated for Bus Rapid Transit on SR 522 (145th Street) from the 145th Street Light Rail station to SR-522 (Lake City Way) and up SR-522 to I-405 and University of Washington Bothell, with an extension to Woodinville. The request also included the addition of structured parking facilities in Lake Forest Park, Kenmore, and Bothell town centers, and the future study of light rail on SR 522.

The ST3 plan will provide the critical infrastructure improvements that, in conjunction with the City's plan for the remainder of the 145th Street corridor, will allow very frequent, reliable transit to serve the station.

To learn more about ST3 visit soundtransit3.org.

NEIGHBORHOOD PARKS, NATURE TRAILS, AQUATICS, THE ARTS...

What do YOU want for Shoreline's Parks, recreation, and cultural services?

Help shape our future at a series of hands-on workshops. Dive more deeply into the topics of providing neighborhoods and the light rail station subareas with parks, open space, and outdoor recreation opportunities; activating our parks and public spaces through the arts; and visioning for a new community center with new aquatic and recreation programming.

Then join us as we bring it all together with options and strategies for the future vision for Shoreline's Parks, Recreation and Cultural Services. This open house meeting will present a summary of what we have learned from you throughout our yearlong public input process. We will also present potential issues and opportunities for future capital investment and recreation and cultural programming.

To learn more about the work to update Shoreline's plan for Parks, Recreation and Cultural Services (PROS Plan), visit shorelinewa.gov/prosplan or contact Parks Project Coordinator Maureen Colaizzi at mcolaizzi@shorelinewa.gov or (206) 801-2603.

SHAPING OUR FUTURE WORKSHOPS

Parks, Outdoor Recreation & Public Art in Neighborhoods & Light Rail Station Subareas

Shoreline City Hall Council Chamber

- Tuesday, Sept. 20, 7:00 - 9:00 p.m.
- Tuesday, Nov. 1, 7:00 - 9:00 p.m.

Aquatic/Community Center Facility Planning - Aquatic, Recreation & Cultural Needs

Shoreline City Hall Council Chamber

- **DATE CHANGE:** Tuesday, Nov. 15, 7:00 - 9:00 p.m.

BRINGING IT ALL TOGETHER

Public Open House

Shoreline City Hall Council Chamber

- Saturday, Jan. 7, 10:00 a.m. - 12:00 p.m.

SECURING OUR FOUNDATION SHAPING OUR FUTURE

shorelinewa.gov/prosplan



BACK TO SCHOOL SAFETY

DRIVERS

More children are hit by cars near schools than at any other location. Please pay close attention in school zones and use extreme caution around pedestrians. **Be aware, be safe, buckle up, and slow down.**

KIDS

Remember to cross only at crosswalks and look both ways before crossing. Never walk while using your phone or headphones. Be aware of your surroundings. **Most of all - have a great school year!**

Citizen Satisfaction Survey results

Shoreline residents continue to give their community high marks according to the results of the most recent Citizen Satisfaction Survey. **Ninety-three percent of residents rate Shoreline as an excellent or good place to live.**

The flow of traffic and congestion continues to be an area that residents express lower levels of satisfaction. They believe it should receive the most emphasis in the coming years. The other two areas that residents feel should receive emphasis in the coming years are the overall quality of police services and human services.

The City conducts a random sample survey every other year to measure satisfaction with services and to determine community priorities. ETC Institute, a professional research company, sent 3,500 surveys asking for opinions

on topics such as maintenance, public safety, customer service, and quality of life. Residents returned more than 900 surveys exceeding the validation goal.

- 78% of residents were satisfied with the overall image of the City.
- 73% trust the City to spend their tax dollars responsibly.
- 61% say City is moving in the right direction. 15% say City is not moving in the right direction, and 24% don't know.

Overall, highest satisfaction levels were with, quality of City parks, programs, and facilities at 84% (16% above national average); quality of police services at 74%; and quality of services provided by the City at 66% (11% above national average).

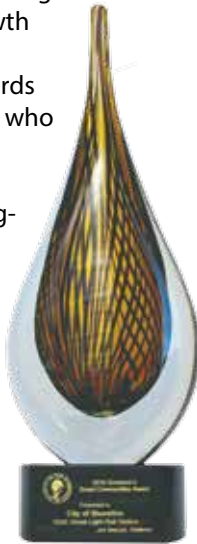
Shoreline awarded 2016 Governor's "Smart Communities" Award

The City of Shoreline recently received the Governor's Smart Vision Award for the 185th Street Light Rail Station Subarea Plan. Shoreline was one of seven cities and one county recognized as a Smart Community for excellence in growth planning.

Now in its 11th year, the Smart Communities Awards program recognizes achievements by local leaders who promote smart growth planning and projects that contribute to thriving communities, a prosperous economy and sustainable infrastructure in Washington State.

"These community projects demonstrate how creative, collaborative planning helps shape a strong future for local economies and contribute to the long-term vitality of our state economy," Gov. Jay Inslee said. "I extend my congratulations to these award winners that are a model for other communities all over Washington State."

For more information on the Governor's Smart Communities Awards or the Growth Management Act, visit commerce.wa.gov/growth.



THANK YOU!

Thank you to everyone who contributed to the success of our Celebrate Shoreline activities, especially the sponsors and volunteers, without whom we couldn't continue to make these events happen. Thank you also to our many artists and performers who make this event so special.

If you would like to be involved in next year's Celebrate Shoreline activities, please contact the Parks, Recreation, and Cultural Services office at (206) 801-2600.

Family Stage sponsor:

The Everett Clinic

Platinum level sponsors:

Carter Subaru
Shoreline Community College
Shoreline Central Market
Shoreline Kids Dentistry
Dale Turner Family Y

Beer garden sponsor:

Recology CleanScapes

Gold Level Sponsors

Shoreline - LFP Arts Council
KBA, Inc.
North City Water District
Teamsters Local 117
NW Mechanical, Inc.
Sky Nursery
NW Electric & Solar
UW Medicine

Silver Level Sponsors:

King County Metro
Voya Financial

Bronze Level Sponsors:

U Smile Orthodontics



SURFACE WATER MASTER PLAN UPDATE

The City of Shoreline is preparing an update to the Surface Water Master Plan and Rate Study (2017 Master Plan). The Master Plan guides the City's surface water utility management programs. The City published its first Surface Water Master Plan in 2005. In 2011, City Council adopted the Surface Water Master Plan Update (2011 Master Plan) to address the changing needs of the City.

Since the City adopted the 2011 Master Plan, the Surface Water Utility has grown; several projects and activities are underway or have been completed; and the City has implemented or anticipates implementing new regulations. Now, the 2011 Master Plan needs to be updated.

The purpose of the 2017 Master Plan is to define levels of service for the Utility; address drainage and water quality challenges associated with growth, increasing regulations, and aging infrastructure within the City of Shoreline. The plan will provide guidance on program priorities and assess the rates and level of funding needed to implement the recommended programs for the next five to ten years.

To accomplish this, the City has contracted with the Brown and Caldwell Team (BC Team) to help develop the plan. To learn more about the update visit shorelinewa.gov/2017MasterPlan.

Public Meetings

City Staff will hold public meetings at Shoreline City Hall to identify public interests and concerns, and solicit input on significant issues.

Open House #1

Thursday, Sept. 8, 6:00 - 8:00 p.m.

Shoreline City Hall Council Chamber

The City will publish dates for additional public meetings on the City's web calendar at shorelinewa.gov/calendar. For more information, contact the Project Manager, Uki Dele, at udele@shorelinewa.gov or (206) 801-2451.

September 2016 Vol. 18 No. 7
**CITY OF SHORELINE
CURRENTS**

Currents is produced by the
Shoreline City Manager's Office
Contact the City:
(206) 801-2700

**Alternate formats
available upon request**



Currents is printed on
post-consumer recycled
paper with soy-based ink.



Get the latest news at
shorelinewa.gov and
follow us on social media



17500 Midvale Avenue N
Shoreline, WA 98133-4905

PRSRT STD
US Postage
PAID
Seattle, WA
Permit No. 248

ECRWSS
POSTAL CUSTOMER

MONSTER MASH DASH 5K

RUN FOR YOUR LIFE

Annual family-friendly 5K run/walk

SATURDAY
THE **8th**
of
OCTOBER

8:00 A.M. REGISTRATION &
COSTUME PHOTOS

9:00 A.M. RUN/WALK START

9:30 A.M. RUNNER AWARDS

10:00 A.M. COSTUME AWARDS

COSTUMES PRIZES MUSIC ACTIVITIES

REGISTER: SHORELINEWA.GOV/5K

