

CITY OF SHORELINE CURRENTS

INSIDE • 2 Property Tax 101 • 4 Shoreline Vision Adopted • 5 Crime Stats • 6 Regional Jail Planning Update



What are Shoreline's future transit, bike and pedestrian needs?

Bike trails, walkways, paths, bike lanes, dog water bowls, sidewalks, bike rack design and location, crosswalks, water fountains, lighting, bus shelters, bus routes – as you walk, ride or take transit in the City of Shoreline, what do you think is missing? What – and where – are the community's most important transit, pedestrian and bike needs?

These are the topics of an upcoming **Community Open House** that will kick off the update to the Transportation Master Plan (TMP). The Open House will be at the **Shoreline Fire Station on Aurora and N 175th Street on Wednesday, July 8, from 5:00 to 8:00 p.m.**

The meeting is an open house with no presentation planned. Community members can drop in to check out the displays about the variety of transit, pedestrian and bike services and facilities that are possible. The goal is to gather suggestions on what should be included in these sections of the update to the City's TMP.

The TMP is a long-range plan that helps guide how the City develops its Capital Improvement Program, coordinate transportation improvements with land uses and better plan what is needed to respond to growth.

Shoreline is updating the TMP because of the significant changes that have been completed and that are planned for the City's transportation system since the last update in 2005. Completed changes include the Interurban Trail, first mile of Aurora and the pedestrian bridges. Improving the next two miles of Aurora and new bus rapid transit service from both Metro and Community Transit, not to mention the light rail, are changes that are coming to Shoreline's transportation system.

The current TMP is available to review on Shoreline's website under Master Plans on the Planning and Development Services page. For more information, contact Transportation Senior Planner Alicia McIntire at (206) 801-2483, amcintire@shorelinewa.gov.

Fireworks Ban

As you make plans to celebrate the Fourth of July, please remember Shoreline Police will be enforcing the City's year-round fireworks ban by confiscating fireworks and writing tickets for possession. Report offenders by calling 911 or (206) 296-3311.

Shoreline Parks Beginning on page 10



Utility Work

This summer, even before the Aurora Corridor Project (N 165th and N 185th Streets) contract is awarded, expect to see utility providers including gas, wastewater, and water out on Aurora prepping for the project. For more information, contact Capital Projects Manager Kris Overleese at (206) 801-2482, koverleese@shorelinewa.gov.

For those who couldn't attend, below is some of the information presented at May's community forum on property taxes.

Property Taxes 101:

How property valuations help determine property tax rates

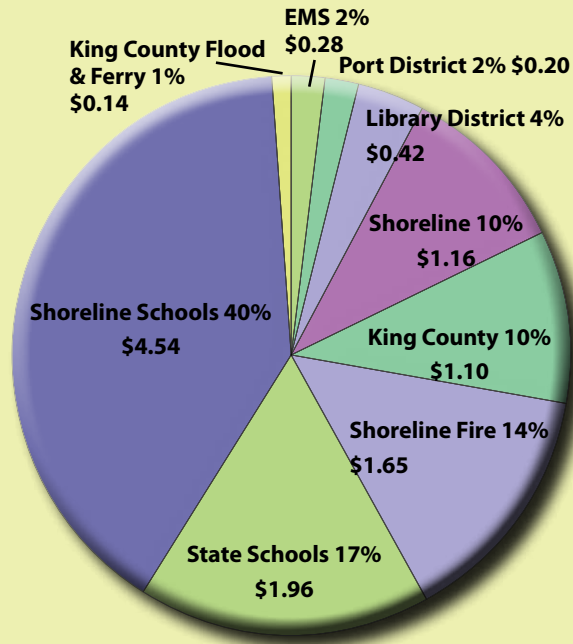
The King County Department of Assessments will be mailing out 2009 property value notices over the next few months. The County Assessor's Office is responsible for determining the valuation of properties of 160 taxing districts in King County – the City of Shoreline just being one of these taxing districts.

Due to the downward changes in the housing market, most homeowners will see a significant reduction in the assessed value of their home. However, this does not mean significant drops in property taxes for 2010. In some cases property owners may pay the same or even more taxes in 2010 than in 2009.

When many people think of taxes, they think of rate-based taxes. Washington State property tax, however, is not rate-based (48 states use a rate-based system). In a rate-based system, property taxes go up when assessed valuation increases and property taxes go down when valuations decline.

Property tax in Washington is levy based. This means that a taxing district may collect a specified dollar amount in any year, subject to certain legal limits. This amount is limited to a 1% increase from one year to the next unless voters approve a larger increase.

Under Washington's system, the taxing district typically figures their total property tax based on the prior year's total property tax revenue plus up to a 1% increase. The county assessor then calculates the tax rate necessary to raise that money. This rate is determined by dividing the amount of money needed by the



Property Taxes in Shoreline

This graph shows how property tax collections in Shoreline are divided among taxing districts. All taxing rates add to a total of \$11.45 per \$1,000 of assessed value.

total value of all property within the jurisdiction. The tax rate is typically expressed in dollars per \$1,000 of assessed value; for example, \$1.16 per \$1,000 of assessed value for the City of Shoreline. So if the total value falls, the rate would increase to raise the same amount of money.

One piece of land may fall under the jurisdiction of many separate taxing districts. For example Shoreline taxpayers pay nine different taxing districts (see chart above).

The primary reason that property taxes have increased is the result of voter-approved levy increases. In 2008 there were 30 measures throughout King County to increase property taxes – 23 of those mea-

asures were approved by voters.

One that is specifically reflected on Shoreline property tax bills is an approved increase for the Shoreline Fire District - voters approved a 25% increase in property taxes paid to the Shoreline Fire District starting in 2009.

Another area covered by the Assessor's Office is the list of 103 possible tax exemptions that "exempt" certain properties from the tax rolls. Examples of exemptions include qualifying low-income seniors or disabled persons, qualifying historical properties, publicly-owned lands, and churches. Exempt properties result in shifting the tax burden to non-exempt property owners.

If you have questions regarding your property valuations, visit the Department of Assessments website at www.kingcounty.gov/Assessor.aspx or call (206) 296-7300. There is a time limit on valuation appeals so contact the Assessment Office soon after you receive your Value Change Notice.

For more information about Shoreline property taxes visit www.shorelinewa.gov or call Shoreline Finance Director Debbie Tarry at (206) 801-2301.



Civic Center/City Hall on schedule for fall completion

That's a Dogwood Tree you see above "blooming" on the north side of Shoreline's soon-to-be completed Civic Center/City Hall. One of the most important elements of the exterior, the inner courtyard art wall, is complete. As of June, all artwork has been installed including the art shown above representing a flowering Dogwood Tree which is native to the Shoreline area. Northwest artist Linda Beaumont was selected for the project which is one-of-a-kind and one of the largest civic art presentations in the area.

All exterior metal work and pre-cast concrete panels have been installed and all drainage systems are in place for the new building on the corner of Midvale Ave N and N 175th Street. The Civic Center/City Hall project is on schedule for fall completion and the parking structure will be finished in December. For more information, contact Project Manager Jesus Sanchez at (206) 801-2421, jsanchez@shorelinewa.gov.

Shoreline receives national budget award for 10th year

For the tenth consecutive year, Shoreline received the Government Finance Officers Association of the United States and Canada (GFOA) Distinguished Budget Presentation Award. The award was presented for Shoreline's 2009 budget; this year, it also received Special Capital Recognition for the Capital Improvement Project (CIP) portion of the document.

To receive the award, Shoreline's Finance Department had to satisfy nationally recognized guidelines for effective budget presentation to

the public. The budget is assessed to see how well it serves as a policy document, financial plan, operations guide and how well it is understood by the average reader. Budget documents must be rated "proficient" in all four categories and meet 14 mandatory criteria to receive the award.

"This award represents a significant achievement by our Finance Department," says City Manager Robert Olander. "Quality budget documents are essential if residents are to be fully informed participants in the budget process. Well-prepared

documents also contribute to better decision making and enhanced accountability."

The City's budget and long-range financial plan played a key role in the upgrade of Shoreline's bond rating by Standard & Poor's from AA- to AA+.

The GFOA is a nonprofit professional association serving over 17,600 government finance professionals throughout North America. To review Shoreline's 2009 budget go to the City's website or contact Finance Manager Patti Rader at (206) 801-2311, prader@shorelinewa.gov.

New cable fee on May bills

Shoreline cable subscribers will see a new \$0.15 fee on their May bill to help pay for equipment to broadcast the Education and Government Access Channels in Shoreline.

The Government Access Channel, Comcast channel 21 and Verizon channel 37, is programmed by the City of Shoreline and includes broadcast of the City Council meetings three times a day. The Education Access Channel, Comcast channel 26 and eventually Verizon channel 36, is jointly programmed by the Shoreline School District and Shoreline Community College.

In April, the Shoreline City Council established an Education and Government Access (EG) Channel Fee of \$0.15 per month to be included on Comcast and Verizon cable subscriber bills in Shoreline. Comcast and Verizon officially placed this new EG Channel Fee on subscriber bills in May.

The Council authorized this fee to help the City pay for the equipment used to broadcast the Education and Government Access Channels on Comcast and Verizon's cable systems. It is also being used to pay for the production equipment needed in the new City Hall to record, edit and produce the City Council proceedings for transmission on the Government Access Channel.

For more information about the fee, contact City Manager's Office Management Analyst John Norris at (206) 801-2216, jnorris@shorelinewa.gov.

A VISION

Imagine for a moment that it is the year 2029 and you are in the City of Shoreline...

So begins the City's official Vision adopted by the City Council last month. Over the past six months, the City worked with the community to create a Vision for the next 20 years to help maintain Shoreline's quality of life. An estimated 400 people participated in shaping Shoreline's Vision. The Planning Commission listened to the comments and created a draft Vision Statement and 17 Framework Goals.

The City Council held public hearings on the draft Vision and Goals at meetings in April and May. Oral testimony from the public was taken at these meetings, and Councilmembers provided additional suggestions and directed staff to make several revisions to the documents. The final adopted versions of the two documents are available on the City's website, along with all public comments, submissions, meeting agendas and handouts throughout the Visioning process.

The 2029 Vision describes neighborhoods, main streets, Aurora Avenue and the type of human and health services you would see in the City 20 years from now. It concludes with this statement:

Whether for a five-year-old learning from volunteer naturalists about tides and sea stars at Richmond Beach or a 75-year-old learning yoga at the popular Senior Center, Shoreline is a place where people of all ages feel the City is somehow made for them. And, maybe most importantly, the people of Shoreline are committed to making the City even better for the next generation.

For more information about Shoreline's Vision or the Visioning process, contact Associate Planner David Levitan at (206) 801-2554, dlevitan@shorelinewa.gov.

Back to Black and White

As Shoreline Police display the first car with their new look it may appear familiar. Some would say it looks like a police car should look: black and white. "It was time we modernized," explains Shoreline Police Chief Dan Pingrey. "The old stripes were quite the in thing 13 years ago but now police departments are moving back to the black and white. It makes our cars unmistakably recognizable." For now there is only one black and white in Shoreline but it will be joined by others over the next year or so as old cars are turned over in the fleet and new ones are brought into Shoreline. "We can't afford to change the entire fleet at the same time," says Chief Pingrey. "But over time the community should gradually see more of the 'black and whites' throughout the City."



2008 Shoreline Police statistics show a reduction in auto theft, traffic accidents

Shoreline Police have aggressively worked to reduce auto theft in the community and the efforts are paying off.

In late 2006, Shoreline Police kicked off an Anti-Auto Theft Program. Figures show that from 2006 to 2007, Shoreline saw a 53.5% reduction in auto thefts. In 2008, the numbers continued to drop with another reduction of 12.1%.

The 2008 report shows a decrease in serious crimes, and traffic accidents were down from 2007. Shoreline Police continue their efforts with Block Watch groups and ask all Shoreline residents to increase their education and awareness of preventing burglaries.

The department is also working with the Prosecuting Attorney's Office on a program to identify the top offenders and enhance sentencing.

Shoreline Police responded to 11,173 dispatched calls for services in 2008, with an average response time to life-threatening calls of 3.31 minutes, far below the national standard of five minutes and faster than the 2007 response time.

Neighborhood Police Centers continue to provide block and business watches, victim call backs, court notifications, vacation house checks and the Anti-Auto Theft Program which provides for prevention edu-

cation and sells steering wheel locks at cost.

"We take great pride in serving the residents of Shoreline," says Shoreline Police Chief Dan Pingrey. "We ask each citizen to consider joining us in our efforts to reduce crime by starting or joining a neighborhood watch program, becoming

a volunteer or signing up for Civilian Emergency Responder Training (CERT) classes or the Citizen's Police Academy. We do our best job when the community is involved with us."

To view a copy of the Police Service Highlights and Data Report for 2008, go to the Police page at www.shorelinewa.gov.

A Record Spring Recycling Event



Thanks to the 1,031 residents that patiently waited in line at the May 30 Clean Sweep Recycling Event, the City collected a record number of items. With the anticipated change-over from analog to digital television, 901 TVs were received—a 300% increase from last year. Other record items included 1,227 computer monitors, a 376% increase; 1,300 fluorescent light bulbs, a 53% increase; and 26 refrigerators/freezers, a 100% increase. Thank you, Shoreline, for your dedication to recycling and patience with the long line.

Did you know?

Building healthy soil and using native plants, such as sword fern or ocean spray, instead of non-native plants can help reduce our reliance on supplemental fertilization, over-watering and the use of harmful herbicides. Native plants also serve an important role for native wildlife such as song birds, which we all appreciate in our backyards. For more information about native plants please visit the King County Natural Yard Care website at <http://your.kingcounty.gov/solidwaste/naturalyardcare/index.asp>.



Looking south on 17th Avenue NE towards the NE 148th Street intersection

First Green Street now in design

Neighbors on 17th Avenue NE met with the City in April to review concepts and design for Shoreline's first Green Street project. The Green Street "make-over" will be constructed this fall on 17th Avenue NE between 150th and 146th Streets to protect and improve water quality in Shoreline and the Puget Sound. The City is partnering with neighbors along the selected street by funding the improvements and working with residents to help maintain the new features.

The project combines natural drainage swales to infiltrate, slow and treat stormwater runoff before it reaches local streams with pedestrian and bicycle-friendly improvements such as walkways, sidewalks, curb

ramps and landscaping with native plants and street trees. The overall goal of the project is to lessen the impact of urban development and provide natural storm drainage.

A second meeting this month will present the first draft design for the project and offers an opportunity for community feedback. For more information about the Green Street project, contact Project Managers Kirk McKinley at (206) 801-2481, kmckinley@shorelinewa.gov, or Jon Jordan at (206) 801-2473, jjordan@shorelinewa.gov. You may also learn more about the project at www.shorelinewa.gov/index.aspx?page=464 or the Puget Sound Partnership website at www.psp.wa.gov/aboutthepartnership.php.

Welcome!

New members of Shoreline's Economic Development Advisory Committee

Last month, the City Council appointed new members to Shoreline's Economic Development Advisory Committee (EDAC). Created in 2007, the 22-member committee provides guidance and direction for future economic growth, identifies economic development opportunities and advises the City Council on the future of the Shoreline business community.

Several members appointed by the City Council are serving additional terms. The following members were reappointed: Marty Rood, Rick Stephens, Craig Degginger, Dick Nicholson, Wendy Dipeso, Warren Johnson and Greg Price. Welcome to the following new committee members: Jack Carney, Cindy Dayley, James "Jamie" Eckhardt, Heather Fralick, William Montero, Doug Palmer, Adam Peddicord, Thomas Phillips and John Weber.

The EDAC meets each month to discuss issues in the business community. For more information, contact Economic Development Manager Mark Mayuga at (206) 801-2218, mmayuga@shorelinewa.gov.

King County indicates multi-year extension on jail contracts possible

A coalition of cities in north and east King County (NEC) that includes Shoreline began an environmental study on six possible sites for a joint municipal jail. The new jail will replace the beds the cities will lose when King County stops accepting city misdemeanor inmates, originally estimated for 2012.

King County recently indicated it is preparing to offer a multi-year extension of contracts with the 36 cities it provides jail services to after a new analysis shows a decline in jail use. The NEC responded that it appreciated King County's request for an extension of the contracts.

"We look forward to seeing the county's specific proposal regarding the extension as we understand the county will be offering 300 beds through 2015. While this will give us a more realistic development schedule, it does not address the issue of long-term jail capacity. The cities will continue discussions with the county on solving our long-term jail capacity needs."

The NEC is in the midst of its environmental impact statement (EIS) process and will issue its draft EIS in December. Public meetings regarding the Draft EIS will be held in January 2010. The final EIS will be issued in the second quarter of 2010. For more information on the project, log onto <http://www.necmunicipaljail.org/>

Shoreline Arts Festival

Weaving a Cultural Tapestry

June 27 and 28

Saturday 10:00 a.m. to 7:00 p.m.

Sunday 10:00 a.m. to 5:00 p.m.

Shoreline Center, 18560 1st Avenue NE

The Shoreline-Lake Forest Park Arts Council presents the 19th annual Shoreline Arts Festival. With two stages of music and dance, juried art, sculpture, photography, hands-on art activities and food, there is something for everyone at this free community event. Don't miss the chance to participate in the creation of a collaborative "cultural tapestry" art project. For more information, contact the Shoreline-Lake Forest Park Arts Council at (206) 417-4645 or www.shorelinearts.net.



Community Partner Spotlight: Shoreline-Lake Forest Park Arts Council

June is a busy month for the Shoreline-Lake Forest Park Arts Council. The nonprofit, community-based organization sponsors both of its major events in June; the 11th annual benefit Gala Auction and Dinner on June 26 followed by the 19th annual Shoreline Arts Festival the weekend of June 27 and 28.

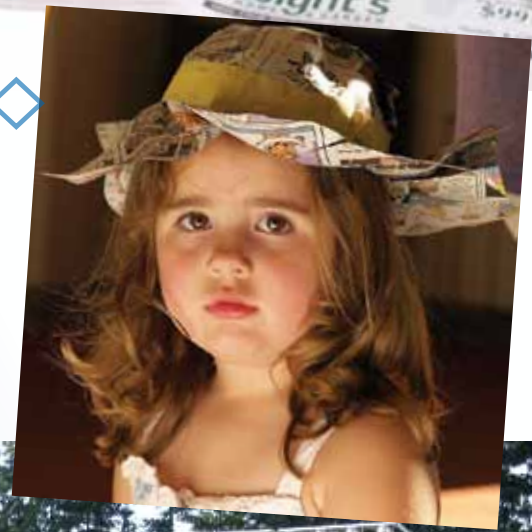
Since 1989, the Arts Council and its dedicated board, staff and volunteers has supported, presented and encouraged the arts in Shoreline and Lake Forest Park. As arts coordinator and sponsor, the Council brings a wide variety of art experiences to the community with performance series such as Arts in Culture, the Children's Series and free summer Concerts in the Parks. The Gallery at Shoreline Center presents six exhibits a year featuring artists representing virtually every medium from paint to photography to sculpture.

"We work hard to fulfill the mission of enhancing the quality of life in our community," says Executive Director Nancy Frey. "People care about that in this community and they get involved to make it happen."

To celebrate 20 years in the community, the Council launched a new website and logo this spring. The logo was designed by Shoreline resident Jennifer Hill in response to a call for graphic designers for a logo competition.

This summer, the Council will again offer August Arts Camp for third through sixth grade students from August 10-14 and an August Jazz Camp starting August 3 and culminating in a performance at the North City Jazz Walk on August 11. The organization supports Artists-in-Residence in the schools and supports local cultural organizations such as the Shoreline Concert Band, Choir of the Sound and Filipiniana through its Community Project Awards.

For more information about the Shoreline-Lake Forest Park Arts Council or upcoming events, call (206) 417-4645 or visit www.shorelinearts.net.



Shoreline Building Permits

Facts About Fences

This is the first article in an ongoing series about permits and the permitting process in Shoreline.



When do I need a permit?

If your fence is 6 feet high or less, it may be built on the property line. No building permit is required, unless your property is located in an environmentally critical area. If the fence is over 6 feet high, a building permit is required. The fence will need to be set back on your property from your property line to the minimum “yard setbacks” for your zoning district. Typical yard setbacks for single-family residential zones are:

- Street: 20 feet from front property line
- Side: 5 feet minimum from side; two sides together must equal 15 feet
- Rear: 15 feet from rear property line

If you live on a street corner, you have two front yard (street) setbacks and two side yard setbacks. You don't have a rear yard setback.

Friendly fences

The City of Shoreline recommends that your front yard fence be no more than 3 feet 6 inches high. This makes neighborhoods friendly and safe and reduces crime by increasing visibility and reducing “hiding places.”

Sight Distance Triangle

All fences, regardless of height, must meet sight distance requirements described below. The sight distance is an area that must be kept unobstructed so that drivers pulling out of driveways or intersections can see oncoming traffic and pedestrians. The following sight distance provisions apply to all intersections and site access points.

1. A sight distance triangle shall contain no fence, berm, vegetation, signs or other physical obstruction between 30 inches and 7 feet 6 inches above the existing street grade.
2. Trees, overhangs, eaves cannot extend below 7 feet 6 inches (6 feet residential).
3. Hedges, shrubs, retaining walls, fences can be up to 30 feet high.
4. Open area must be maintained between 30 inch and 7 feet 6 inches high (6 feet residential).

Trellises and arbors

An arbor or trellis is a landscape feature consisting of an open frame with horizontal and/or vertical latticework. It must be at least 50% open (for arbors, both the sides and the roof must be 50% open). Landscaping supported by the trellis or arbor can grow over the height limit; however, sight distance requirements must be met.

A trellis that is 8 feet or less may be located on the property line. A permit is not required to build a trellis that is 8 feet or less, unless it is in an environmentally critical area.

An arbor that is 40 square feet or less and 8 feet or less in height may be built on the property line (it does not have to meet setbacks). A permit is not required to build an arbor that is 8 feet high or less and 120 square feet or less (unless it will be in an environmentally critical area).

Permit applications, checklists and handouts are available at www.shorelinewa.gov. For more information, contact Shoreline Building Official Ray Allshouse at (206) 801-2541, rallshouse@shorelinewa.gov.

Suggested Summer Reading

It's mosquito season: Protect yourself from the risk of West Nile Virus

It is that time of year again when the daylight hours are longer, barbecues and outdoor gatherings become more common and residents often spend more time outside in the evenings. It is also time to start thinking about the risk of West Nile Virus (WNV), a mosquito-borne virus that can cause West Nile fever, encephalitis and meningitis.

WNV can infect mosquitoes, birds, horses, other animals and people. The virus is spread when a mosquito becomes infected with the virus by biting a virus-infected animal and then bites a person or animal. The virus is not spread by person-to-person contact, and it is not transmitted from birds or other animals to people.

In 2008, two humans, 40 horses and 22 birds tested positive for WNV in Washington State. In King County specifically, there was one reported human case of WNV and three WNV positive birds.

Reduce your potential exposure by taking these measures:

1. Rid homes of mosquito breeding habitat by emptying containers of standing water and keeping gutters clean of leaves and debris;
2. Keep mosquitoes out of homes by fixing ripped window and door screens;
3. Wear long-sleeved shirts when outside at dusk or dawn, and use insect repellent on skin and clothing.

The City of Shoreline receives frequent updates from Seattle-King County Public Health regarding the number of positive WNV cases found around the state and in the area.

To report a dead bird in your neighborhood contact Seattle-King County Public Health's West Nile hotline at (206) 205-3883, or visit <http://www.kingcounty.gov/healthservices/health/ehs/west-nile.aspx>. For more information

about West Nile Virus please visit the Public Works Surface Water and Environmental Services page on the City's website.



Plan a National Night Out Against Crime event for August 4

National Night Out Against Crime is designed to send a message to criminals letting them know that neighborhoods are organized and neighbors are watching out for each other.

Block Watch and other groups of neighbors recognize National Night Out by having potlucks, barbecues, ice cream socials and other events to get to know each other better. Shoreline encourages you to start planning now.

A permit may be required for street closures, but for neighborhood events it's free. Contact Shoreline Permit Services at (206) 801-2500 regarding Right-of-Way Special Event Permit requirements.

A simple registration form is available on the Police page at www.shorelinewa.gov or by calling the Police Neighborhood Centers listed on the back of Currents. By registering you may request:

- A free National Night Out Apron (while supplies last)
- An event packet with information about Block Watch, emergency readiness and neighborhood associations.
- Visits from Shoreline Police and Fire (availability dependent on emergency calls).

For more information contact Shoreline Police Officer Leona Obstler at (206) 546-3636.

Going on vacation? Prepare your home

Before you leave for vacation take the following precautions to protect your home before you leave and to make it appear "lived-in" while you're gone.

- Check all doors and windows to make sure they are securely locked. Replace or reinforce locks if needed.
- Use automatic timers on interior lights and/or a portable radio.
- Make sure items such as toys, ladders and lawn furniture are put away.
- Inform trusted neighbors on all four sides when you'll be gone so they can help watch your home. Be selective in announcing your plans.
- If you have an alarm system, activate it before you leave. Leave an alternate alarm code with a neighbor or friends and show them how it operates in case of an emergency.

Call one of the Shoreline Police Neighborhood Centers for more information on crime prevention and the Vacation House Check Program: Eastside (206) 363-8424; Westside (206) 546-3636.

Experience Shoreline's Parks

An Adventure for Every Day of Summer

Shoreline is the place to be this summer - for breath-taking views of Puget Sound and tennis, indoor swimming and nature trails, sunny, sandy beach time and skateboarding. With more than 370 acres of park land and an abundance of specific recreation locations to call your own, you can spend every day of summer exploring and experiencing something different in Shoreline Parks.

And the best thing about everything listed here? *It's all free!*

Experience...

Nestled in the middle of the Richmond Beach neighborhood sparkles a forest-green gem of horticulture. Visit **Kruckeberg Botanic Garden** to tour over four acres of native and exotic plants and trees collected by Dr. Art and Mareen Kruckeberg. The Garden is open to the public at designated hours, for tours, by appointment, for horticultural workshops and volunteer work parties. Plants from the collection are also for sale. For more information contact the Kruckeberg Botanic Garden Foundation at (206) 542-4777 or visit www.kruckeberg.org.

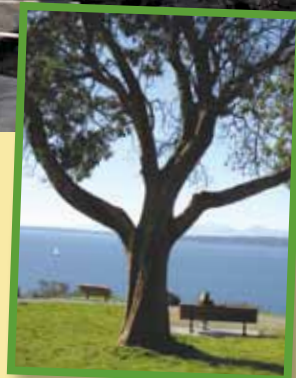
Stroll to the end of the **Bluff Trail** at sunset to take in panoramic views of Puget Sound and the Olympics, host a

picnic at the new Terrace level or dig your toes into the sand at the edge of the water at **Richmond Beach Saltwater Park**. Shoreline's newest park, **Kayu Kayu Ac**, also offers premier Sound and mountain views and a great locale for a picnic plus top-notch play equipment.

Have you seen the public art on the **Interurban Trail**? Sculpture at the trailheads, banners along the first mile, bridges over Aurora and 155th Street? Art graces nearly every corner of Shoreline and can be found in some of the most exciting and unexpected places. How many can you discover over the summer? Contact Shoreline Public Art Coordinator Ros Bird at (206) 801-2661 or rbird@shorelinewa.gov for a few hints of where to look.

Explore...

You don't have to drive hours to find hiking trails through classic Western Washington woods. Over 200 acres of forested trails await you at **Boeing Creek, Shoreview, South Woods** and **Hamlin Parks**. **Boeing Creek Park** just received improvements to its trail system in 2008; **Hamlin Parks** will receive improvements in 2009 and **Shoreview Park** in 2010.





For a closer look at fresh-water aquatic life or to relax while watching the ducks, check out Shoreline creeks, lakes and ponds. Some are in plain sight like **Echo Lake** or **Ronald Bog**. For other parks like **Twin Ponds**, **Boeing Creek** and **Shoreview**, it pays to park and exit your car to fully appreciate the expanse and variety of water systems hidden within the trees.

Want some bike trails to ride on or are you looking for places to walk? The City has been investing not only in its natural park trails, but also in its hard surface trail systems. The best known is the **Interurban Trail**, a three-mile path through the middle of the City that is fully accessible and great for biking or walking. There are two circular loop trails at **Paramount** and **Boeing Creek Parks** that are also accessible to those with limited mobility.

Play...

Enjoy throwing a Frisbee or kicking a soccer ball on the new synthetic turf fields at **Twin Ponds** or **Shoreline Parks**.

Playing with Frisbees isn't just for the two-legged. Shoreline just opened its first pilot off-leash dog area in the northeastern corner of **Shoreview Park** in an open lot that was previously used by the Shoreline Community College as parking. The south end of the beach at **Richmond Beach Saltwater Park** will be open for seasonal use as an off-leash park from November 2009 through April 2010.

Tennis anyone? The tennis courts at **Shoreline Park** were recently renovated with new lighting and there are also courts at **Richmond Beach Community Park**, **Shoreview**, **Hillwood** and **Twin Ponds Parks**.

So many parks in Shoreline have play equipment that we can't list them all here! Some of the newer ones to visit include those at **Kayu Kayu Ac** and **Hillwood Parks**.



Shoreline Parks

- Boeing Creek Park**
601 NW 175th Street
- Bruggers Bog**
19553 25th Avenue NE
- Cromwell Park**
18009 Corliss Avenue N
- Echo Lake Park**
1521 N 200th Street
- Hamlin Park**
16006 15th Avenue NE
- Hillwood Park**
19001 3rd Avenue NW
- Interurban Trail**
N 145th Street to N 205th Street
- Kayu Kayu Ac Park**
19911 Richmond Beach Drive NW
- Keough (James) Park**
2301 N 167th Street
- Kruckeberg Botanical Garden**
20312 15th Avenue NW
- Meridian Park**
16765 Wallingford Avenue N
- North City Park**
19201 10th Avenue NE
- Northcrest Park**
827 NE 170th Street
- Paramount Park Open Space**
946 NE 147th Street
- Paramount School Park**
15300 8th Avenue NE
- Richmond Beach Community Park**
2201 NW 197th Street
- Richmond Beach Saltwater Park**
2021 NW 190th Street
- Richmond Highlands Recreation Center and Park**
16554 Fremont Avenue N
- Ridgecrest Park**
108 NE 161st Street
- Ronald Bog**
2301 N 175th Street
- Shoreline Park**
19030 1st Avenue NE
- Shoreline Pool**
19030 1st Avenue NE
- Shoreview Park**
700 NW Innis Arden Way
- Shoreview Park Off-Leash Area**
320 NW Innis Arden Way
- South Woods**
NE 150th Street & 25th Avenue NE
- Twin Ponds Park**
15401 1st Avenue NE

Concerts in the Parks

Swingin' Summer Eve

Wednesday, July 22

5:30 to 8:30 p.m.

Sponsored by the City of Shoreline and the Shoreline-Lake Forest Park Arts Council.

Admission - FREE*

NEW location: Paramount Park, 15300 8th Ave NE
Celebrate the spirit of summer with a community festival and BBQ with live music, pre-concert games and activities for the whole family.

- ✧ Inflatables, Face painting, Clown
- ✧ BBQ presented by the Shoreline Fire Department, fundraiser for the Shoreline Firefighters Association.
- ✧ **Used Book Sale**- sponsored by the Shoreline neighborhood associations.
- ✧ **Live music by the Popoffs!**
*Small fee for some activities and food



Lunchtime Music Series

Tuesdays, Noon to 1:00 p.m.

Free Concerts

Take a lunch break in the park each Tuesday July 7 to August 11.

Please note new location for some concerts.

- ✧ **July 7:** Recess Monkey- Great for kids!
Richmond Beach Saltwater Park
- ✧ **July 14:** Shumba Youth Marimba Ensemble
Paramount Park
- ✧ **July 21:** Eric Haines, Comedian & Juggler
Richmond Beach Saltwater Park
- ✧ **July 28:** Panduo, Steel Drum Ensemble
Paramount Park
- ✧ **August 4:** Halau Hula O'Napualani Pacific Island Dance, Richmond Beach Saltwater Park
- ✧ **August 11:** Duwamish Dixieland Jazz Band
Paramount Park



Summer of Fun Concerts in the Park Series

Free evening concerts

The Shoreline-Lake Forest Park Arts Council and the cities of Shoreline and Lake Forest Park sponsor free evening concerts in parks throughout the summer. All performances begin at 7:00 p.m. unless otherwise noted.

- ✦ **July 8:** Savani Latin Jazz Quintet – Latin Jazz
Animal Acres Park
NE 178th Street and Brookside Blvd., Lake Forest Park
- ✦ **July 15:** Becki Sue and Her Big Rockin Daddie – Blues
Richmond Beach Community Park
- ✦ **July 19:** Wooden O Shakespeare Company – Richard the III
Animal Acres Park
- ✦ **July 22 :**Swingin' Summer Eve: The Popoffs – Classic Pop/Rock
Paramount Park
- ✦ **July 29:** Wooden O Shakespeare Company – The Taming of the Shrew
Richmond Beach Community Park
- ✦ **August 5:** Kellee Bradley – Pop/Folk
Animal Acres Park
- ✦ **August 11:** August Jazz Camp Students and Faculty (Part of the North City Jazz Walk, 17739 15th Avenue NE)
- ✦ **August 19:** Type A! – Funk/Soul
Richmond Beach Community Park



Dick (left) is pictured with Bill Clements, PRCS Board Chair.

Dick Deal honored with community service award

The Richmond Beach Community Association Board honored Dick Deal with a Marge Unruh Community Service Award based on his work to enhance the quality of life of the community. The Marge Unruh Award was started in 1999 to recognize individuals who make Richmond Beach and Shoreline a great place to live. Award winners receive a plaque and have their names engraved on a perpetual plaque kept in the Richmond Beach Library. Dick is Shoreline's Director of Parks, Recreation and Cultural Services (PRCS).

He received the award for his leadership with the Parks Bond, the acquisition of Kruckeberg Botanic Garden, Saltwater Park improvements and construction of the Kayu Kayu Ac Park. Dick also supports the Strawberry Festival and Christmas Ship Celebration, two popular community events in Richmond Beach.

Shoreline Parks and Recreation e-news coming soon!



Be the first to know about upcoming programs and events that your City of Shoreline Parks, Recreation and Cultural Services Department has to offer! Enter your email in the box on the lower right of the homepage at www.shorelinewa.gov, select your topics and City news will be delivered directly to you.





Celebrate Shoreline

It's time to celebrate our City's 14th anniversary!

Tuesday, August 11

3rd Annual North City Jazz Walk

7:00 to 10:00 p.m.

\$10 advance/\$15 day of event

Limited Seating

Friday, August 14

Youth/Teen Skate Competition

Noon to 5:00 p.m.

Paramount Skate Park, 15300 8th Avenue NE

Free – Liability forms required to participate

Saturday, August 15

Parade

NOON - Note new parade start time

Parade runs south on 15th NE between NE 180th and NE 165th Streets

Festival

11:00 a.m. to 5:00 p.m.

Ridgecrest Elementary School

16516 10th Avenue NE

Small fee for food & inflatables

Cruise-In Car Show

10:00 a.m. to 5:00 p.m. \$15 entry fee
Ridgecrest Elementary School parking lot

Sunday, August 16

Sandcastle Contest

Richmond Beach Saltwater Park

Noon to 3:00 p.m., Free



Summer fun at . . .



The Spartan Recreation Center

- ✧ **Preschool creative arts programs** – one-day art workshops and creative dance classes.
- ✧ **Summer youth dance classes** – pre-ballet, ballet, dance moves and Appalachian clogging.
- ✧ **Summer cultural art classes and programs** – Chinese culture, art and swim, young actors, sewing camp, cartooning, drawing and painting.
- ✧ **Children's technology i-camps** – learn to create your own video games through the fundamentals of computer programming. Also learn construction techniques and programming using Lego-based control systems.
- ✧ **Adult Health and Fitness** – summer classes in Jazzercise, salsa-cise (zumba-like class), pilates, yoga, and tai chi. New this summer is a Shoreline running group utilizing the Shoreline Stadium track and the Interurban Trail.
- ✧ **Adult dance classes** – just in time for summer weddings, learn swing, ballroom, Zydeco basics and Cajun line dance. Also popular this summer: belly dance.

Camps and Shoreline Pool

Shoreline has a wide range of programs for children and teens that are looking for something to do this summer.

- ✧ **Camp Shoreline** at Spartan Recreation Center features sports, arts, special events and daily swimming at the Shoreline Pool. Weekly themes and a talented staff will provide a safe and entertaining time for all. The camp is divided into age groups with a special program for campers under the age of seven.
- ✧ **Another Camp Shoreline** is held at Meridian Park Elementary School thanks to the Shoreline School District. This program is open to campers from age 4 to 6th grade and runs from 9:00 a.m. to 4:00 p.m.
- ✧ ✧ **Skyhawks** – Shoreline offers Skyhawks Sport Camps during the summer months. Programs include Golf, Basketball, Flag Football, Baseball, Volleyball, Cheerleading and Multi-Sports Camps. Ages 5 to 14 years old.

- ✧ **The Shoreline Pool** will be holding swim lessons throughout the summer for all ages. The Gators Swim Team practices various times through out the week and competes with other swim teams in the area. Open swims are a great way to enjoy a hot summer day.

For Teens

- ✧ **C.I.T. Summer Camp** is guaranteed fun and a great experience, too. Spend three days learning to be a C.I.T. (counselor in training) at a summer camp. Trips include the beach, Wild Waves and other cool spots. This camp is offered twice in July for teens 13 to 15. The fee is \$155 or \$140 with a resident discount.
- ✧ **Teen trips** – All pick-ups and drop-offs are at the Richmond Highlands Recreation Center (The REC). Teen trips are for ages 12 to 18 and scholarships are available. **Wild Waves:** A whole day of water rides and roller coasters on Mondays June 29 and July 13, Wednesday, Aug. 5, from 10:30 a.m. to 7:00 p.m. The fee is \$40 or \$35 with a resident discount.
- ✧ **Tuesday treks** – Every Tuesday throughout the summer the Teen Program is touring the greater Seattle area. Join us for these free trips as we head to different beaches or parks to hang out, play games and get sun. All trips are from noon to 5:30 p.m. with pick-up and drop-off from the Richmond Highlands Recreation Center. For more information call San Le at (206) 801-2643.
- ✧ **Friday treks** – Join us for Friday afternoon fun at regional locales hanging out, playing games, exploring nature and generally kickin' it. It's all free -- all you have to do is make sure you either register or turn in a permission slip. Pick-up and drop-off at Third Place Books and The CENTER on Fridays from noon to 5:00 p.m. For more information call Waldo Nambo-Ojeda at (206) 801-2644.

For a complete list of programs or to register, visit www.shorelinewa.gov/parks or call (206) 801-2600. The Summer 2009 Recreation Guides are also available at Shoreline City Hall, Spartan Recreation Center and local libraries.

CITY OF SHORELINE CURRENTS

Currents is produced by the Communications Program, (206) 801-2219, swill@shorelinewa.gov
Editing, writing and design: Susan Will, Tami Beaumont, Sheila Edwards and Tavia Tan. Photos: Adam Buchanan and Parks, Recreation and Cultural Services staff

Alternate formats available upon request



Currents is printed on post-consumer recycled paper with soy-based ink.



17500 Midvale Avenue N.
Shoreline, WA 98133-4921

Postmaster:
Time-Sensitive Material
Please deliver June 22-24

PRSR STD
US Postage
PAID
Seattle, WA
Permit No. 248

ECRWSS
POSTAL CUSTOMER

www.shorelinewa.gov

Shoreline City Council

For all Councilmembers	(206) 801-2200	council@shorelinewa.gov
Mayor Cindy Ryu	(206) 801-2201	cryu@shorelinewa.gov
Deputy Mayor Terry Scott	(206) 801-2202	tscott@shorelinewa.gov
Chris Eggen	(206) 801-2206	ceggen@shorelinewa.gov
Ron Hansen	(206) 801-2205	rhansen@shorelinewa.gov
Doris McConnell	(206) 801-2204	dmcconnell@shorelinewa.gov
Keith McGlashan	(206) 801-2203	kmcglashan@shorelinewa.gov
Janet Way	(206) 801-2207	jway@shorelinewa.gov

Meeting Location
Shoreline Conference Center, 18560 1st Avenue NE
Agenda Line: (206) 801-2236

Study Sessions: Mt. Rainier Room, first & third Mondays 6:30 p.m.
Business Meetings: Mt. Rainier Room, second & fourth Mondays 7:30 p.m.

Televised City Council Meeting
Comcast Cable Channel 21 & Verizon Cable Channel 37
Tuesday noon & 8:00 p.m., Wednesday - Sunday 6:00 a.m., noon & 8:00 p.m.
Meetings are available online at www.shorelinewa.gov



City of Shoreline
17500 Midvale Avenue N, Shoreline 98133
(206) 801-2700 Fax (206) 546-7868
www.shorelinewa.gov

City Hall Annex - Highland Plaza
1110 N 175th Street, Suite 105

Spartan Recreation Center
18560 1st Avenue NE, Shoreline 98155
(206) 801-2600 Fax (206) 801-2600

Shoreline Pool
19030 1st Avenue NE, Shoreline 98155
(206) 801-2650 Fax (206) 801-2650

Kruckeberg Botanic Garden
20312 15th Avenue NW, Shoreline 98177
(206) 546-1281

Departments & Programs

City Manager's Office	(206) 801-2213
Code Violations	(206) 801-2700
General Info (CRT)	(206) 801-2700
Human Services	(206) 801-2251
Jobs	(206) 801-2243
Neighborhoods & Volunteers	(206) 801-2253
Parks and Recreation	(206) 801-2600
Permits, Zoning & Land Use	(206) 801-2500
Public Works	(206) 801-2400
Projects & Engineering	(206) 801-2470
Recycling	(206) 801-2450
Street Maintenance	(206) 801-2440
Traffic Services	(206) 801-2430

Shoreline Police

Emergency: 911

Shoreline Police Station
Chief Dan Pingrey
1206 N 185th Street
Shoreline, WA 98133
(206) 801-2712

Eastside Police Neighborhood Center
Officer Greg McKinney
521 NE 165th Street
Shoreline, WA 98155
(206) 363-8424

Westside Police Neighborhood Center
Officer Leona Obstler
624 NW Richmond Beach Road
Shoreline, WA 98177
(206) 546-3636

Popular Numbers

Arts Council	(206) 417-4645
CleanScapes	(206) 763-4444
Comcast	(877) 824-2288
Historical Museum	(206) 542-7111
KC District Court	(206) 205-9200
KC Libraries	
Richmond Beach	(206) 546-3522
Shoreline	(206) 362-7550
Puget Sound Energy	(888) 225-5773
Qwest	(800) 244-1111
Ronald Wastewater	(206) 546-2494
School District	(206) 367-6111
Seattle City Light	(206) 625-3000
Seattle Public Utilities	(206) 684-5900
Senior Center	(206) 365-1536
Shoreline Center	(206) 368-4122
Shoreline Fire	(206) 533-6500
Shoreline Water	(206) 362-8100
Transfer Station	(206) 296-4466
Verizon	(800) 483-4100