

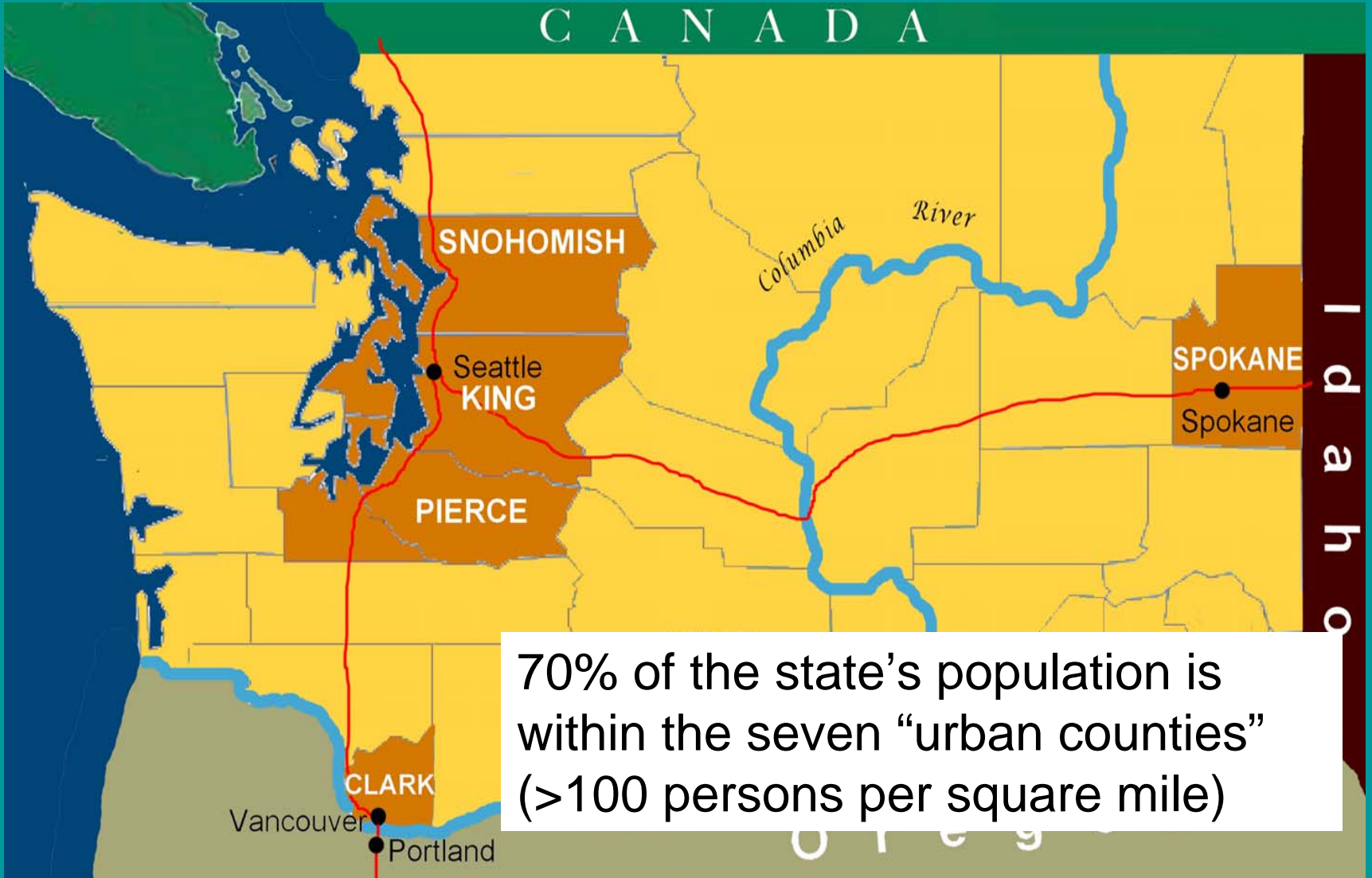
The Growth Management Act

Project Update in Shoreline

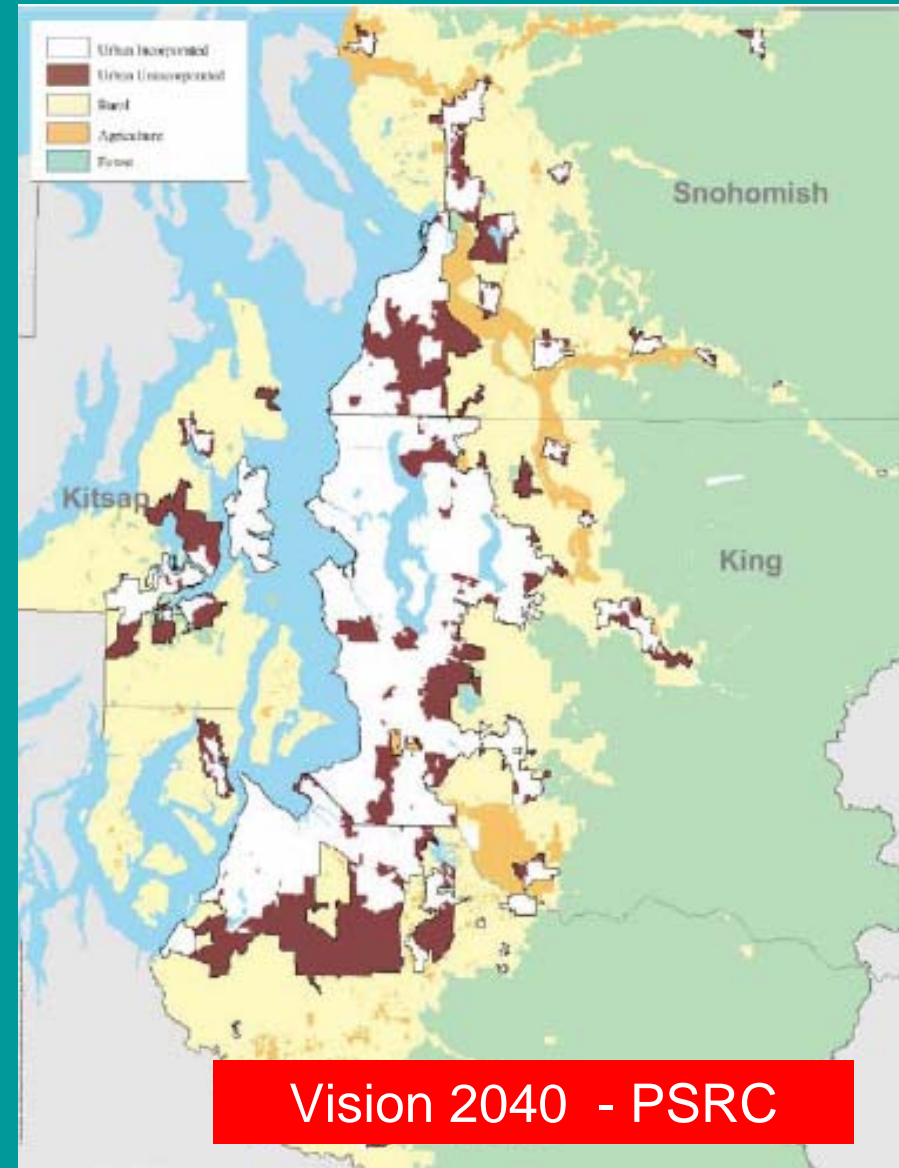
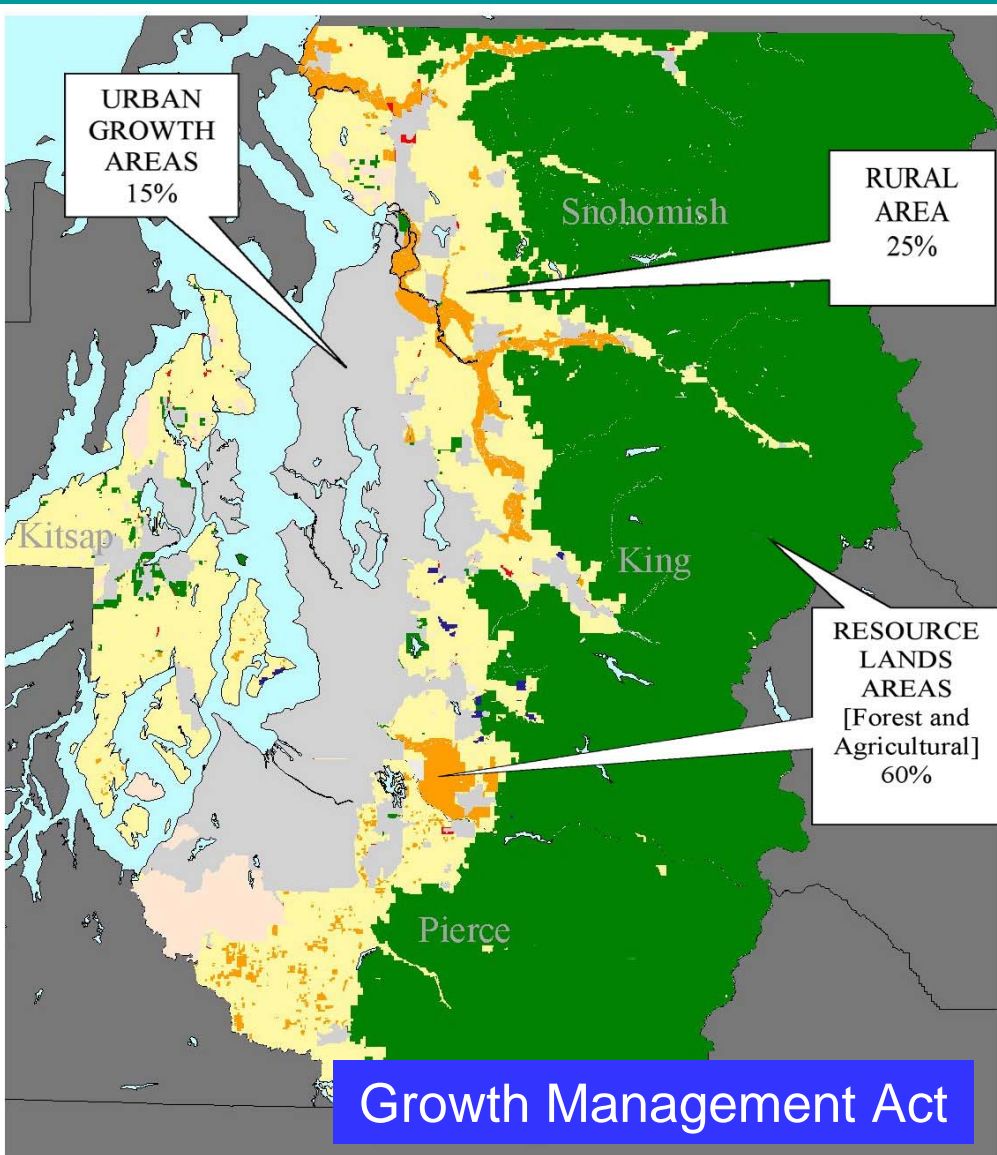
Vision 2028 and the Shoreline Community Conversations

Joseph W. Tovar, FAICP
Planning Director, City of Shoreline
Email: jtovar@ci.shoreline.wa.us

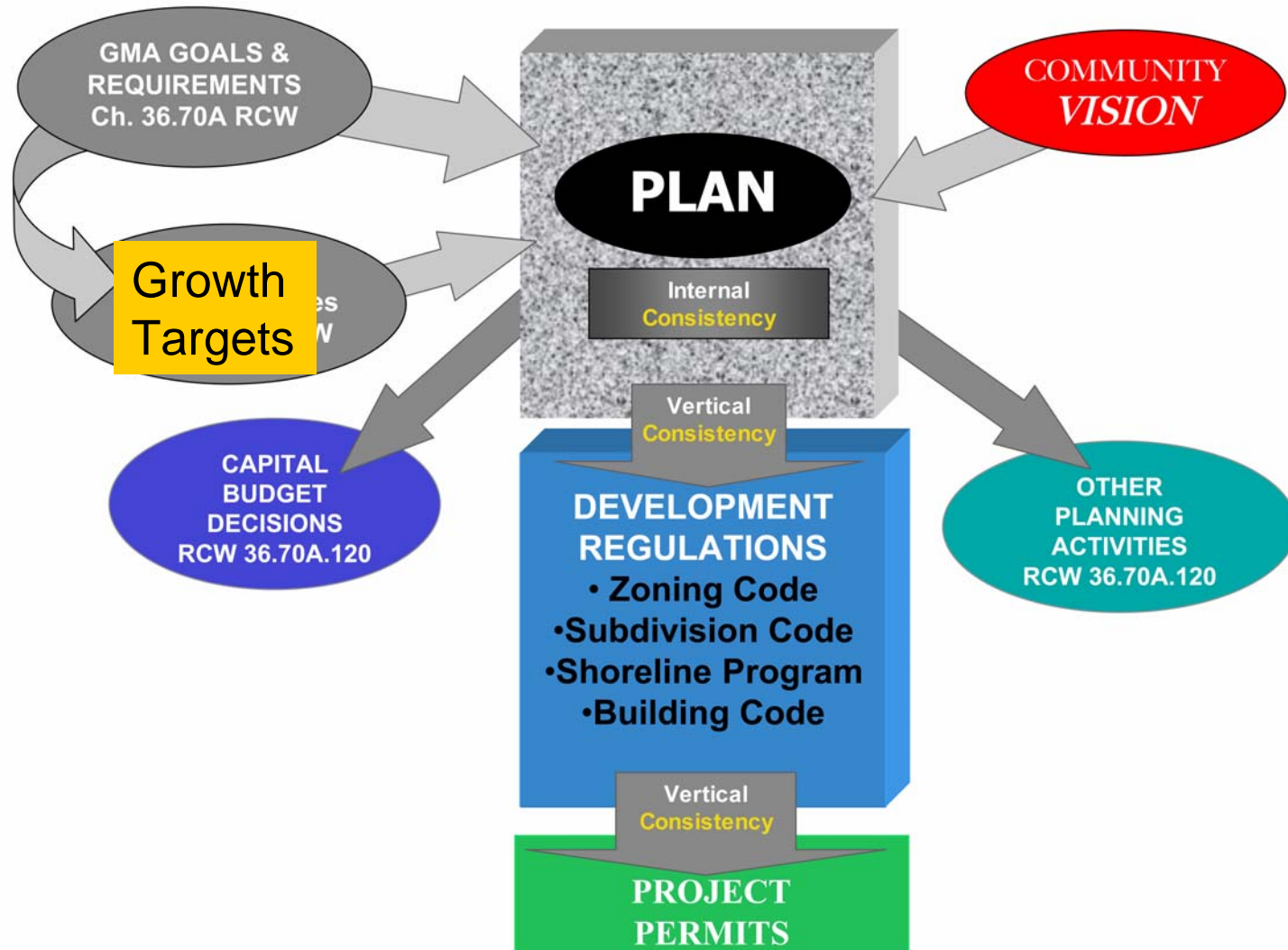
The Growth Management Act applies in all 39 counties



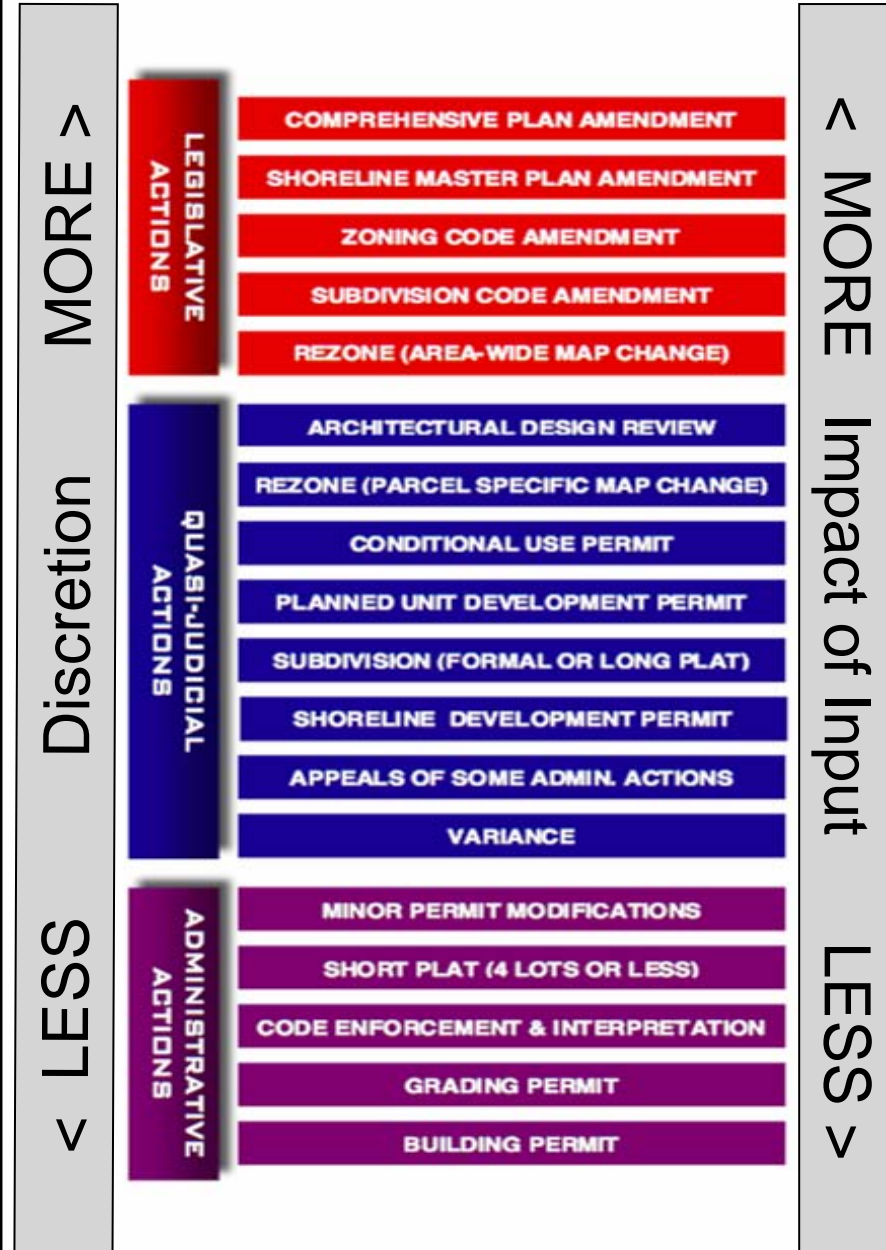
State Law and the Regional Plan



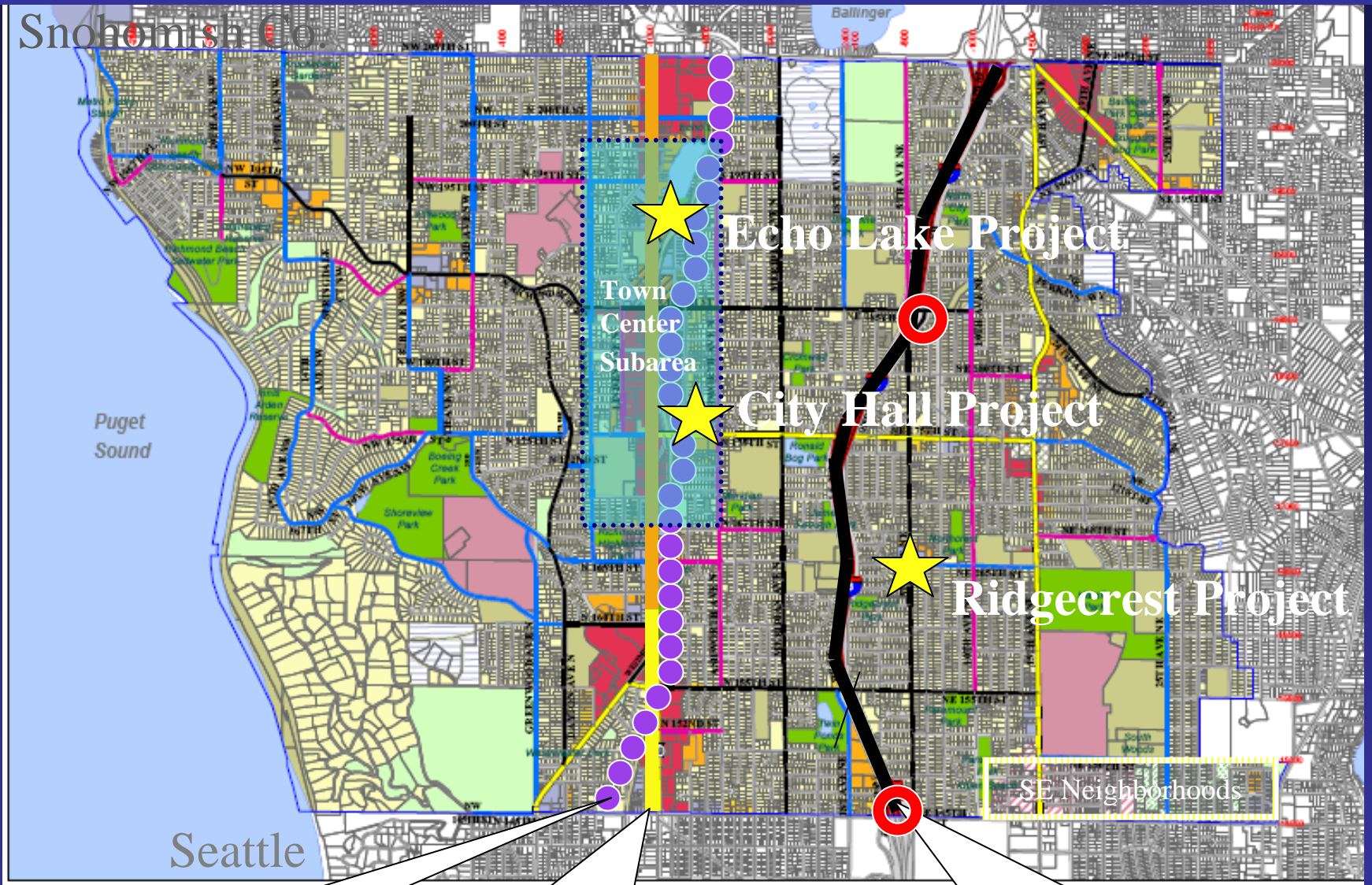
State Law, Regional Plans, Local Visions



The Land Use Decision-Making Ladder



City of Shoreline - Public & Private Projects



Interurban Trail

Aurora Ave. N.

I-5 light rail alignment

The Greening of Shoreline's Capital Projects



Aurora Boulevard - mile 1



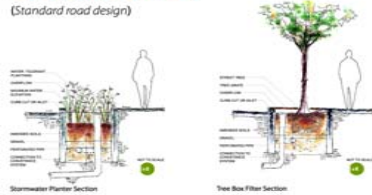
Interurban Trail bridge over Aurora

Low Impact Development Toolkit

Options for the Aurora Corridor Project

Stormwater Planter Boxes & Tree Box Filters

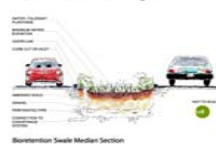
(Standard road design)



- Fits within the amenity zone of alternative B, alternative C, and draft recommended alternative.
- Meets Basic Water Quality treatment regulations by removing over 80% of Total Suspended Solids (sediment).
- Collects curb/gutter flow.
- Conveys excess stormwater or overflows to catchbasin.
- Creates a separation between motor vehicle and pedestrian travel modes.

Bioretention Swale Medians

(Reverse crown road design)



- Fits in median for all alternatives.
- Collects flow from center median curb/gutter.
- Meets Basic Water Quality treatment regulations for sediment removal.
- Conveys excess stormwater or overflows to catchbasin.
- Reverse crown road design requires WSDOT approval.

Porous Sidewalks & Side Streets



- Stormwater filters through pavement and sub-base conveys it.
- Can be used on residential side streets with low traffic volume and sidewalks.
- Not suitable for streets with high traffic volume (arterials).
- Looks different from concrete - does not have a smooth finish.
- Demonstration opportunities for side streets adjacent to Aurora Avenue.



Shoreline City Hall

Aurora Boulevard - miles 2 & 3

City Hall and other public Projects



Echo Lake Project



Interurban
Trail

Echo Lake

Public access

Housing

YMCA

Senior
Housing

Aurora
Project

Retail and
Housing

North ↑

Walkway ↗

Wetland Plantings

Buffer

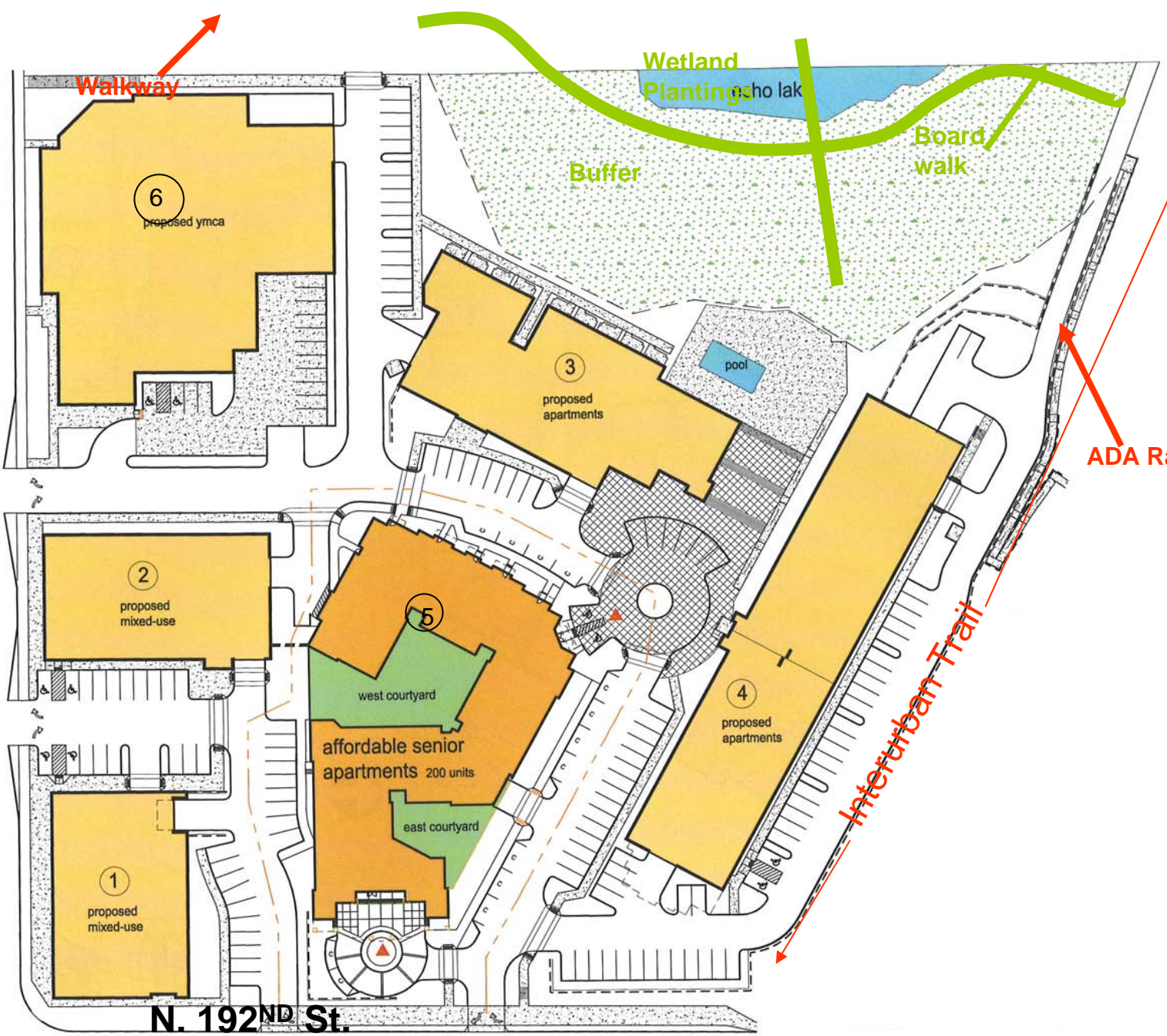
Board walk

ADA Ramp ↗

Interurban Trail ↘

Aurora Avenue

N. 192ND St.



6

proposed ymca

3

proposed apartments

pool

2

proposed mixed-use

5

west courtyard

affordable senior apartments 200 units

east courtyard

4

proposed apartments

1

proposed mixed-use

New mixed use project in the Ridgecrest neighborhood commercial center in Shoreline



Ridgecrest Project submittal - NE Corner



Ridgecrest Project submittal - SE corner



Ridgecrest Project submittal - SW corner



Light rail has major implications for land use and station area planning in several cities

N. 185th St.

N. 145th St.



Non-motorized travel - what's coming?



What's your



for Shoreline?

CITY OF SHORELINE

CURRENTS

INSIDE • 3 Sustainability Strategy • 4 Food Bank • 5 New Park in Shoreline • 6 It's Happening • 7 Celebrate Shoreline

Shoreline's strategy to update its Vision

Share Your Vision for Shoreline Join the Community Conversation

It's no accident that of over 100 Seattle-area cities and neighborhoods evaluated in the July issue of *Seattle* magazine, Shoreline was ranked the best neighborhood.

Since incorporation in 1995, Shoreline has enjoyed excellent public safety, strong community involvement and major public improvements such as the North City Project, the Interurban Trail and the first mile of Aurora. In 2006, voters overwhelmingly supported the City's first-ever bond issue for parks and open spaces, and, after saving funds for a decade, construction of a new City Hall began this year.

To maintain Shoreline's quality of life in the coming decades, the City Council is developing a Vision for the future. Since the Vision will be adopted into the Comprehensive Plan and will guide Shoreline's growth and development for years to come, it is vitally important that every resident participates in the beginning of this process: a Community Conversation about Shoreline's future.

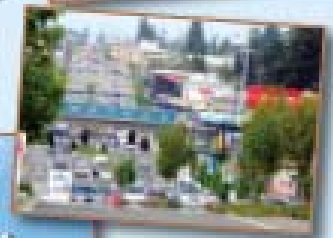
2008-2009 City Council Goal:

Develop a shared community vision that integrates the Environmental Sustainability, Housing and Economic Development Strategies into the Comprehensive Plan

In October a wide variety of community groups will meet to talk about the Vision for Shoreline's future. See the details for these "Community Conversations" on the next page and mark your calendar now for the one most convenient for you.

From these conversations, the City will prepare a draft Vision for further public review and City Council adoption early in 2009.

For more information, visit www.ci.voteshoreline.



Calendar of Conversations

October 2008

October 2008						
S	M	T	W	T	F	S
1	2	3	4	5	6	7
8	9	10	11	12	13	14
15	16	17	18	19	20	21
22	23	24	25	26	27	28
29	30	31				

November 2008						
S	M	T	W	T	F	S
1	2	3	4	5	6	7
8	9	10	11	12	13	14
15	16	17	18	19	20	21
22	23	24	25	26	27	28
29	30					

Monday	Tuesday	Wednesday	Thursday	Friday	Sat/Sun
		October 1 7:00pm Long range financial planning citizen's advisory group (Shoreline Center)	2 6:00pm Shoreline Citizen's Coalition (Shoreline Center)	3	4
6	7:00pm Shorewood PTSA (Shorewood HS LIBRARY)	7:00pm Westminster/Highland Terrace Neighborhood Association (St. Dunstan's church)	7:00pm Meridian Park/ Echo Lake Neighborhood Association (Meridian Park Elementary Library)	10	11
13	Shorecrest HS/PTSA tentative (Shorecrest Library) 7:00pm Ballinger/Northcity Neighborhood Association. (Shoreline Library)	7:00pm Vision Aurora (Firestation #61)	7:00pm Chamber of Commerce (Fircrest)	17	18
20	7:00pm Hillwood/Richmond Neighborhood Association (Crista campus; Shimmer Auditorium)	7:00pm Inter-faith group (Firestation #61)	7:00pm Pro Shoreline (Firestation #61)	23	24
27	6:00pm Forward Shoreline (Fire Station #61)	7:00pm Briarcrest/Ridgecrest Neighborhood Association & Fircrest Staff (Fircrest)	7:30am Shorewood High School (P.Villeneuve's 1st block class) 7:00pm Parks board/Arts Commission/Trails Committee (Shoreline)	31	

Here are three Key Questions we'd like you to answer. At the end of this conversation, we'll give you some time to write, in your own words, your answers to these three Key Questions.

1. How do you think our lives will change over the next 20 years?

For example, what are some new inventions, social changes or changes in the way we live, work, shop and move around the community, that you see coming?

2. What do you like best about Shoreline that you would like to see continued?

3. What do you like least that you would not like to see continued in the future?

To kick off your conversations, we'll start by going clockwise around each circle of participants, and have people express thoughts on any of the following:

- What will our housing and neighborhoods look like? Who will live in the housing here in 2028?
- What do we want our business districts to be like and where should they be located?
- What kinds of workplaces will we have, what kinds of shops and services?
- How will we get around (by car, transit, bike, foot or others?) What kind of transportation improvements will we need?
- What changes in services and facilities do we want, such as parks, police and fire protection, recreation and cultural programs, and how do we pay for them?
- How do we want our educational systems, schools and facilities to change?
- What degree and methods of protection or enhancement is appropriate for streams, wetlands, air, and trees?
- How will all these be affected by our need to accommodate our population growth?

These questions
are posted on
screen