



**SHORELINE
CITY COUNCIL**

Will Hall
Mayor

Doris McConnell
Deputy Mayor

Susan Chang

Keith A. McGlashan

Chris Roberts

Betsy Robertson

Keith Scully

September 25th, 2019

RE: Minor modifications to intersection of 15th Ave NW/NW Richmond Beach Rd

Dear intersection stakeholder:

As discussed in the City's Richmond Beach Road Rechannelization Post-Project Report, available online at: <http://www.shorelinewa.gov/government/projects-initiatives/richmond-beach-road-rechannelization>, staff recognizes the challenges residents and business patrons experience entering and exiting the driveway for 1440/1442 NW Richmond Beach Rd.

To address these challenges, the City is planning to implement some minor pavement marking modifications to make entering and exiting the driveway easier. These modifications are shown in Attachment A. Please note that sight lines from the driveway to the north leg of 15th Ave NW are limited, however stopping sight distance for mainline drivers is adequate which minimizes risk of potential conflict.

This modification may be interim until a more standard and permanent solution can be constructed, potentially in Fall 2020. In the meantime, there may be minor increase in intersection delays since the intersection is being elongated and will therefore take more time to cross, making it less efficient. In addition, the northwest-bound left turn lane is being eliminated. This element is not expected to cause a significant impact since the peak hour left turn volume is only about 30 vehicles.

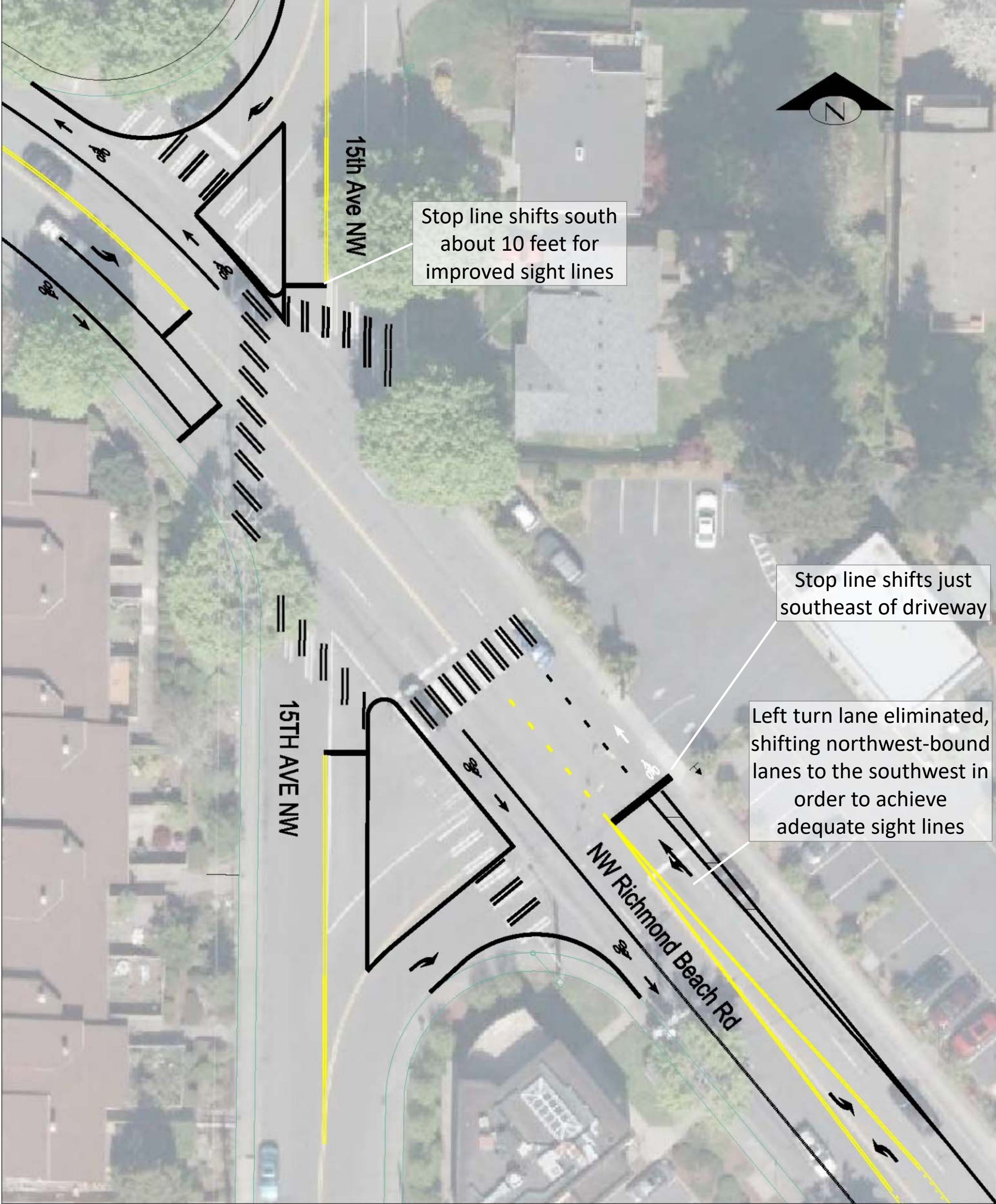
If weather cooperates, this work should be implemented before the end of October 2019. We appreciate your continued patience. If you have any additional questions, please contact Kendra Dedinsky, City Traffic Engineer, at (206) 801-2431 or via email at kdedinsky@shorelinewa.gov.

Sincerely,

Kendra Dedinsky, PE, PTOE
City Traffic Engineer
City of Shoreline Public Works

Attachment A – 15th Ave NW & NW Richmond Beach Road Intersection Modifications
Diagram

cc: Randy Witt, Director of Public Works
Debbie Tarry, City Manager
Nytasha Sowers, Transportation Planning Manager
Tricia Juhnke, City Engineer



NW Richmond Beach Road & 15th Ave NW Intersection Modifications

- Residents and business patrons have experienced challenges entering and exiting the driveway at 1440/1442 NW Richmond Beach Road due to its current close proximity southeast of the stop line for the northwest-bound traffic.
- Changes shown in this diagram are intended to improve turns to and from the driveway at 1440/1442 NW Richmond Beach Rd which serves some businesses and 11 residences. These changes will ensure driveway users can exit and enter in any direction.
- Sight lines from the driveway to the north leg of 15th Ave NW will be limited, however there is adequate stopping sight distance for drivers on the roadway which mitigates potential conflicts.
- This configuration will eliminate the northwest-bound left turn lane, keeping all westbound traffic in a shared lane. This is not anticipated to cause significant increased delay since left turn volumes are low (about 30 in the PM peak). The revisions elongate the intersection which will make it operate somewhat less efficiently.