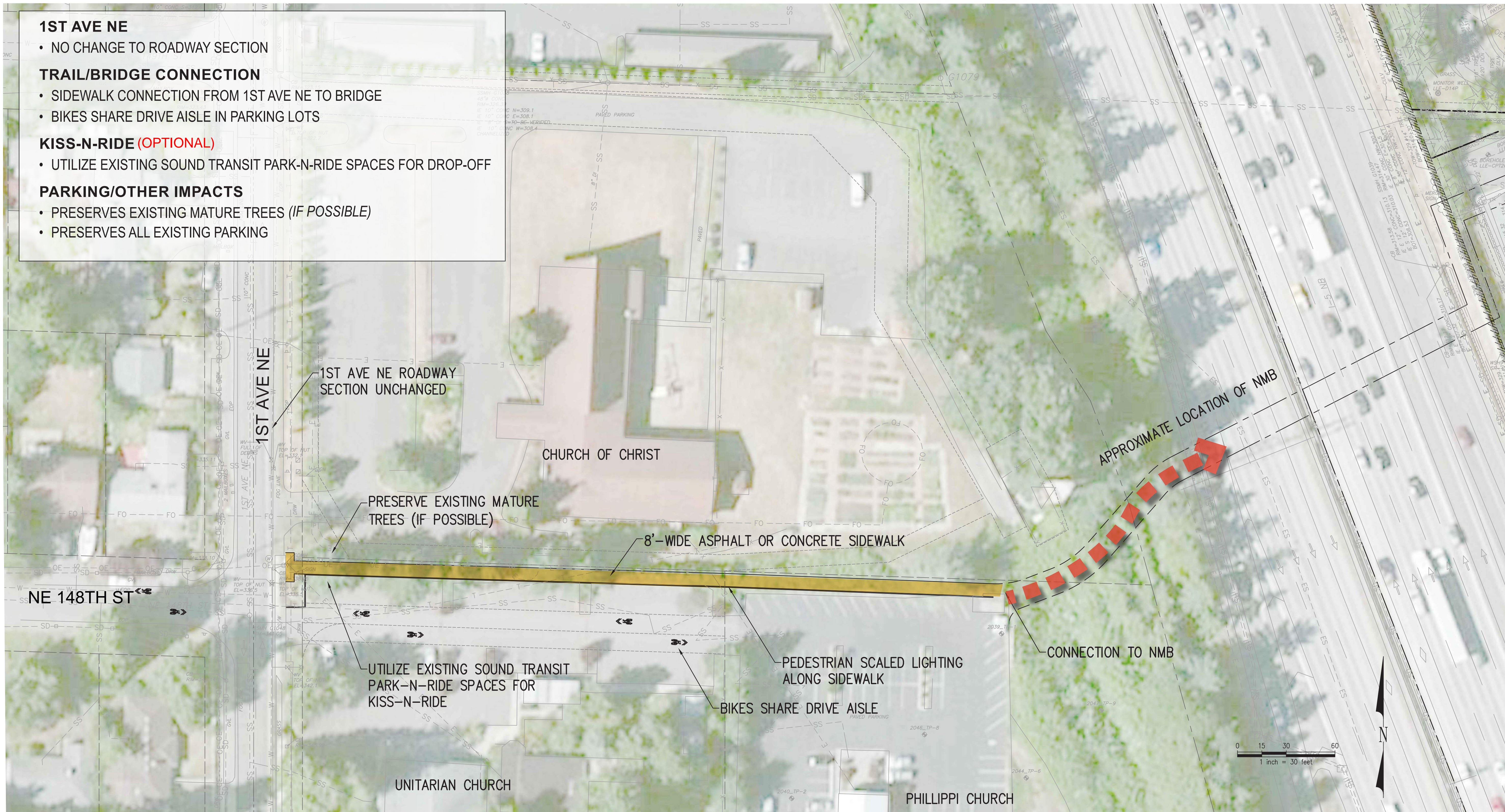


WEST-SIDE KISS-AND-RIDE

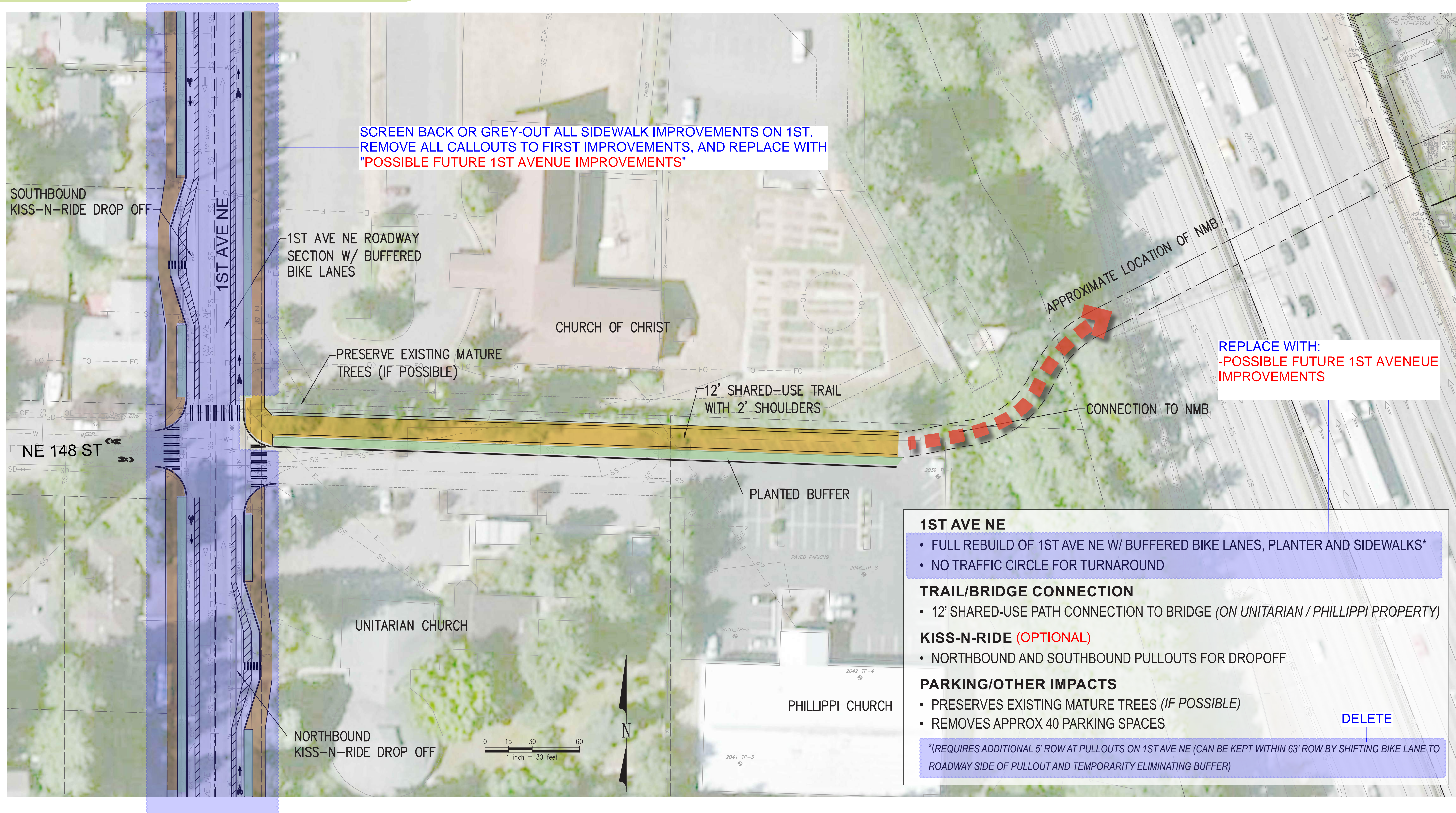
REMOVE REFERENCE TO "KISS-AND-RIDE", REPLACE WITH "WEST TRAIL CONNECTION TO 1ST AVENUE", TYPICAL.



OPTION 1 - MINIMAL BUILD-OUT

WEST-SIDE KISS-AND-RIDE

REMOVE REFERENCE TO "KISS-AND-RIDE", REPLACE WITH "WEST TRAIL CONNECTION TO 1ST AVENUE", TYPICAL.



SCREEN BACK OR GREY-OUT ALL SIDEWALK IMPROVEMENTS ON 1ST. REMOVE ALL CALLOUTS TO FIRST IMPROVEMENTS, AND REPLACE WITH "POSSIBLE FUTURE 1ST AVENUE IMPROVEMENTS"

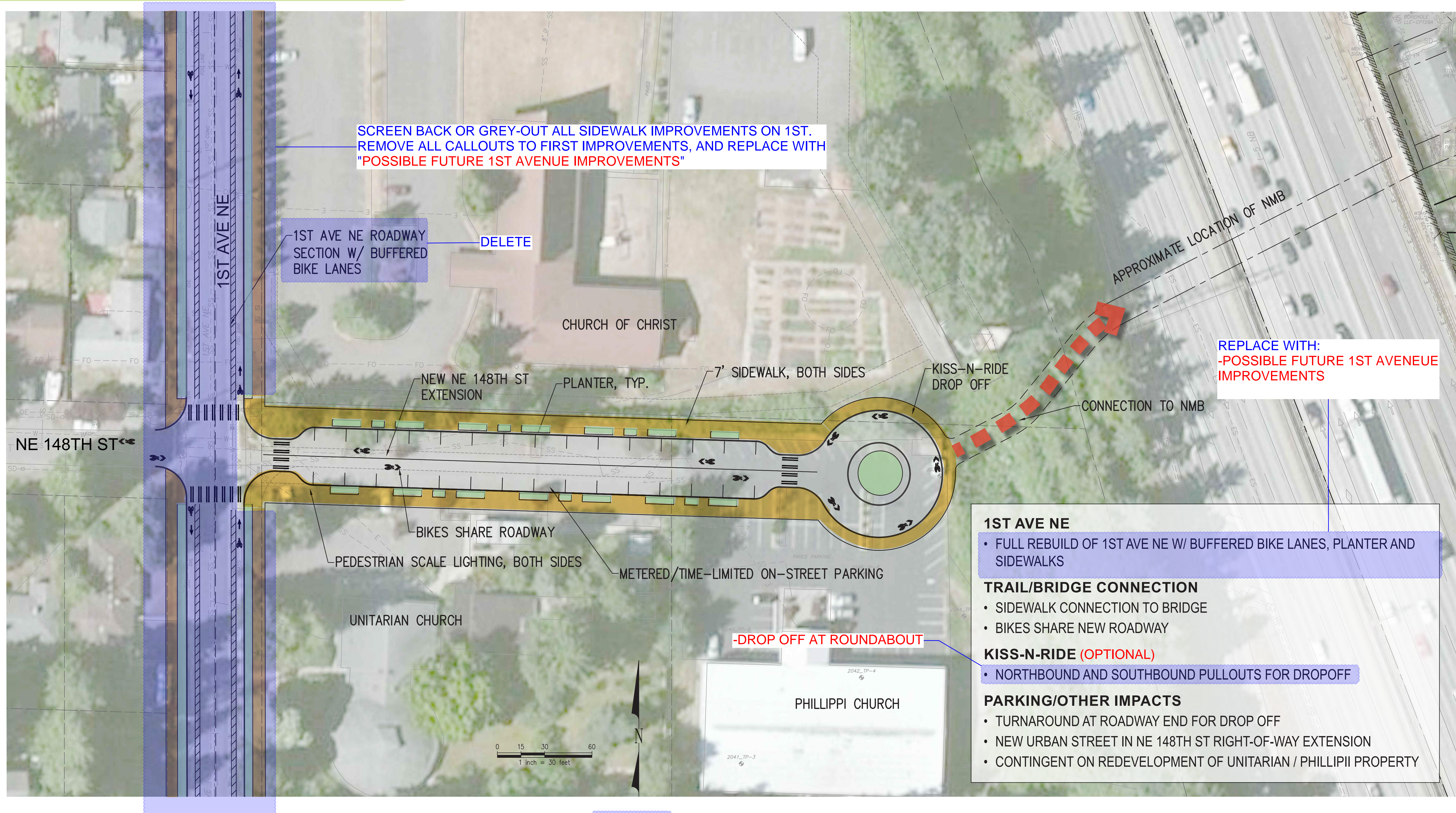
REPLACE WITH:
-POSSIBLE FUTURE 1ST AVENUE IMPROVEMENTS

- 1ST AVE NE**
- FULL REBUILD OF 1ST AVE NE W/ BUFFERED BIKE LANES, PLANTER AND SIDEWALKS*
 - NO TRAFFIC CIRCLE FOR TURNAROUND
- TRAIL/BRIDGE CONNECTION**
- 12' SHARED-USE PATH CONNECTION TO BRIDGE (ON UNITARIAN / PHILLIPPI PROPERTY)
- KISS-N-RIDE (OPTIONAL)**
- NORTHBOUND AND SOUTHBOUND PULLOUTS FOR DROPOFF
- PARKING/OTHER IMPACTS**
- PRESERVES EXISTING MATURE TREES (IF POSSIBLE)
 - REMOVES APPROX 40 PARKING SPACES
- * (REQUIRES ADDITIONAL 5' ROW AT PULLOUTS ON 1ST AVE NE (CAN BE KEPT WITHIN 63' ROW BY SHIFTING BIKE LANE TO ROADWAY SIDE OF PULLOUT AND TEMPORARILY ELIMINATING BUFFER))**

OPTION 2 - FULL TRAIL BUILD OUT

WEST-SIDE KISS-AND-RIDE

REMOVE REFERENCE TO "KISS-AND-RIDE", REPLACE WITH "WEST TRAIL CONNECTION TO 1ST AVENUE", TYPICAL.



OPTION 4 — **OPTION 3 - NE 148TH ST EXTENSION**

SHORELINE - N 148TH NON-MOTORIZED BRIDGE

DECEMBER 2019