

REQUEST TO USE KING COUNTY SOLID WASTE DIVISION PROPERTY

Submitted by Camp United We Stand, Inc.
May 1, 2021

Proposal summary

Camp United We Stand, Inc., a Washington non-profit corporation, requests use of a vacant lot owned by King County located at 2300 N. 165th St. in Shoreline, WA situated within Parcel Number 5727500410. This property is associated with the Shoreline solid waste transfer site operated by the King County Solid Waste Division and was formerly the area used for recycling. The intended use of the property would be to house a homeless encampment of up to 35 people. The intended length of stay would be for 6 months, beginning August 2021. The use of the site by Camp United We Stand, Inc. would be conditioned on the receipt of a use permit issued by the City of Shoreline.

The proposed site for the homeless encampment is shown in Figures 1 and 2.

Background

Camp United We Stand, Inc. (CUWS) has operated a homeless encampment in the Shoreline and North Seattle area for over 7 years. The encampments have been hosted by local churches including the following:

- Calvin Presbyterian Church
- Haller Lake United Methodist Church
- Richmond Beach Congregational Church-UCC (no longer available because property sold)
- St. Dunstan's Episcopal Church
- Shoreline Free Methodist Church (Current location of CUWS encampment)

These churches continue to support Camp United We Stand, Inc. and all have endorsed this proposal.

Typically CUWS encampments are located at sponsoring churches for 3 months and at times the camps have been permitted to remain for up to 6 months in special situations.

The overarching goal of CUWS is to facilitate the transition to independent living. Experience has shown that the CUWS homeless encampment has been very responsible in the local neighborhoods where it has been located over the years. The public has been accepting and good relations have been maintained with neighbors and church congregations. More importantly, CUWS provides a safe and secure place for people who have become homeless. Based on CUWS bylaws, the number of homeless people in the camp at any one time is limited to a maximum of 35. Many of the camp members are from the local area, many have jobs, and some even have children. All people in the camp are governed by a Code of Conduct and all pay a monthly fee to stay in the camp. There are strictly enforced rules and all residents are screened prior to being admitted to the camp. No sex offenders or people with outstanding warrants are permitted. No weapons, street drugs, or alcohol are permitted in the camp. Members of the camp routinely collect litter and garbage from the neighborhoods where the camp is situated. Every CUWS encampment has been permitted by the City of Shoreline.

Proposal details

In order to broaden the number of available sites for a homeless encampment in this area, CUWS is asking the King County Solid Waste Division for permission to use the vacant space adjacent to the Shoreline Transfer Station. The churches listed above would continue to support the camp while at this site and likewise would continue to be in the rotation for hosting the camp in the future. Having an additional site with provisions for a 6-month stay will greatly ease the necessity of moving the camp every 3 months as well as ease the burden on the supporting churches.

CUWS is asking King County Solid Waste Division for permission to use the site of the former recycling area at the Shoreline Transfer Station for a 6-month stay beginning in August 2021. Based on previous CUWS encampments, the area needed for the camp is between 7,500 and 10,000 square feet, or an area of about 90x90 feet. It appears the proposed site meets this basic requirement.

Because CUWS has not had an opportunity to fully examine the site, it is understood that this request will require further review and examination. For example, it is desired, but not mandatory, that a source of water and electricity be available on the site. CUWS would work with the Solid Waste Division, Seattle City Light, and Seattle Utilities to determine if and how to provide for these services. Likewise, CUWS understands that the Solid Waste Division may have some unforeseen need to use the site and the camp would be prepared to move after adequate notice to vacate was issued.

The camp maintains 24/7 security to monitor the entrance and the overall encampment. The camp provides portable toilets and a solid waste dumpster which are located near a gate to be accessible for weekly servicing. In addition, there is a common kitchen and canteen area which will be located on the paved area of the property. Tenants usually have a space of at least 10x10 feet for their tents which are put on pallets to keep them off the ground. Generally 15 to 25 tents are needed to accommodate the camp members. Because some camp members have cars, an area will be designated for parking.

CUWS camps at churches in Shoreline and in the City of Seattle have had a visual fabric barrier around the periphery to provide some privacy and well as to enhance security. The proposed site is totally enclosed by a chain link fence so it may only be necessary to screen the fence along the access road to the transfer station. This detail can be discussed with the King County Solid Waste Division and City of Shoreline.

Once approval has been granted for use of the property, CUWS will develop a detailed layout of the proposed encampment which will be submitted to the City of Shoreline in the use permit request. A copy of the camp layout will be provided to the King County Solid Waste Division for review before the camp is located on the property. For illustration purposes, Figures 3-5 are attached to show proposed camp layouts at church sites used by CUWS in the past.

Benefits

CUWS would greatly benefit from being able to use this site because of the added availability of space for a homeless encampment in this area (Shoreline and north Seattle). There are many cost advantages for CUWS to having the camp in one location for a 6-month period instead of 3 months. The proposed site is ideal from the standpoint of size and security. A chainlink fence surrounds the area and there are very few neighbors in the immediate vicinity of the site. The site is near a METRO bus line and is within easy walking distance from stores and markets. These are important factors in consideration of

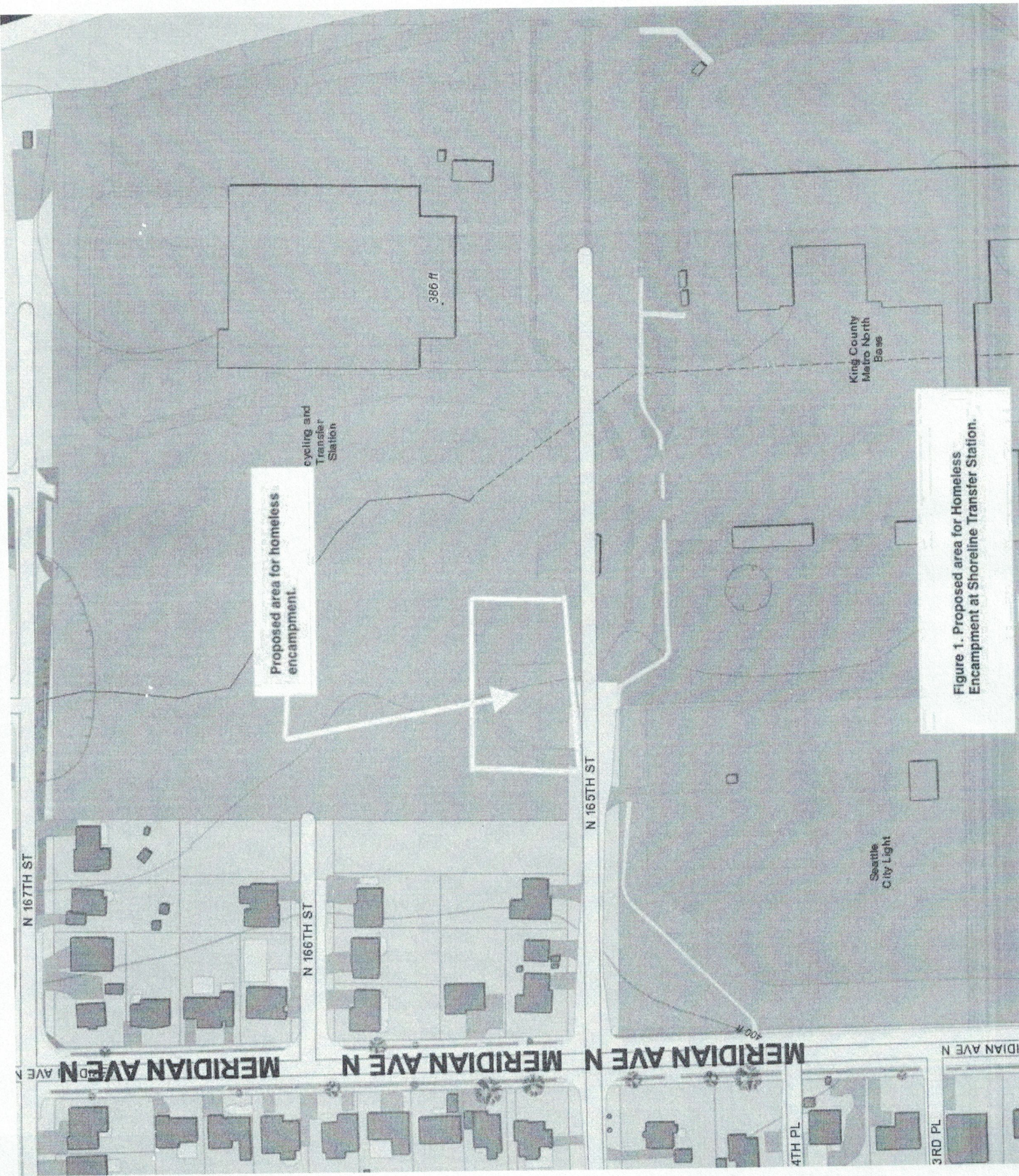
site suitability. Given the size of the enclosed parcel, there appears to be adequate parking space for vehicles without impacting the surrounding neighborhood or interfering with the transfer station operations in any way. What would be truly ideal is if the camp could use the solid waste disposal services at the transfer station in some manner.

For the King County Solid Waste Division (and King County in general) the benefits of supporting the camp by providing use of this property lie in having an organized encampment instead of forcing people to camp in unauthorized areas of the city. This benefits all residents of Shoreline and north Seattle and would serve as a statement for how the County is providing assistance to homeless people.

The benefits for the Cities of Shoreline and Seattle are similar to those of the County. Having an organized, well operated camp for homeless people serves as a model for assisting people to make the transition to independent living.

Next Steps

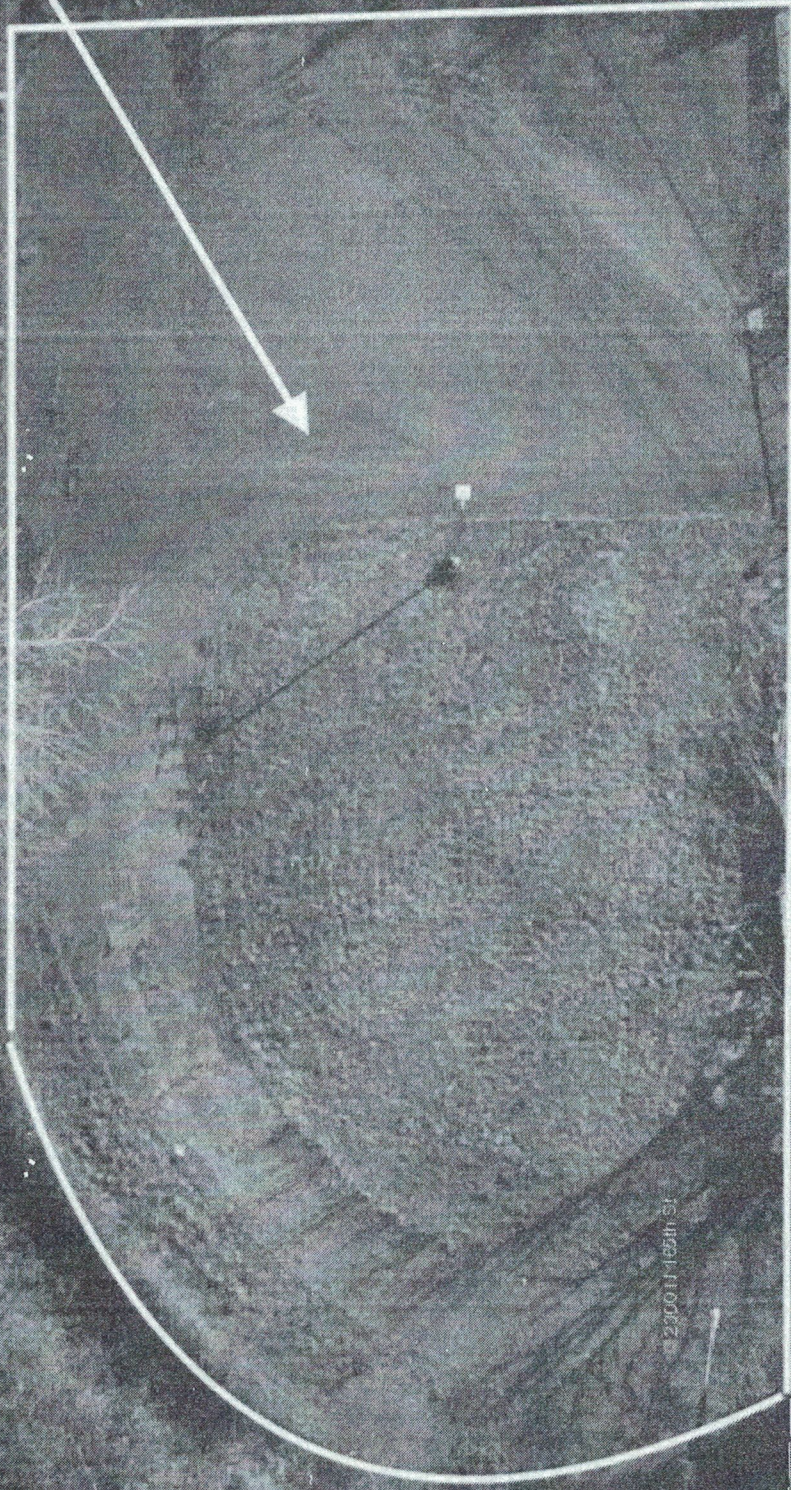
CUWS would like to meet with the King County Solid Waste Division and the representatives of the King County Council and Executive Office to determine if an agreement to use the proposed site is feasible.



Proposed area for homeless encampment.

Figure 1. Proposed area for Homeless Encampment at Shoreline Transfer Station.

Proposed area for homeless encampment.

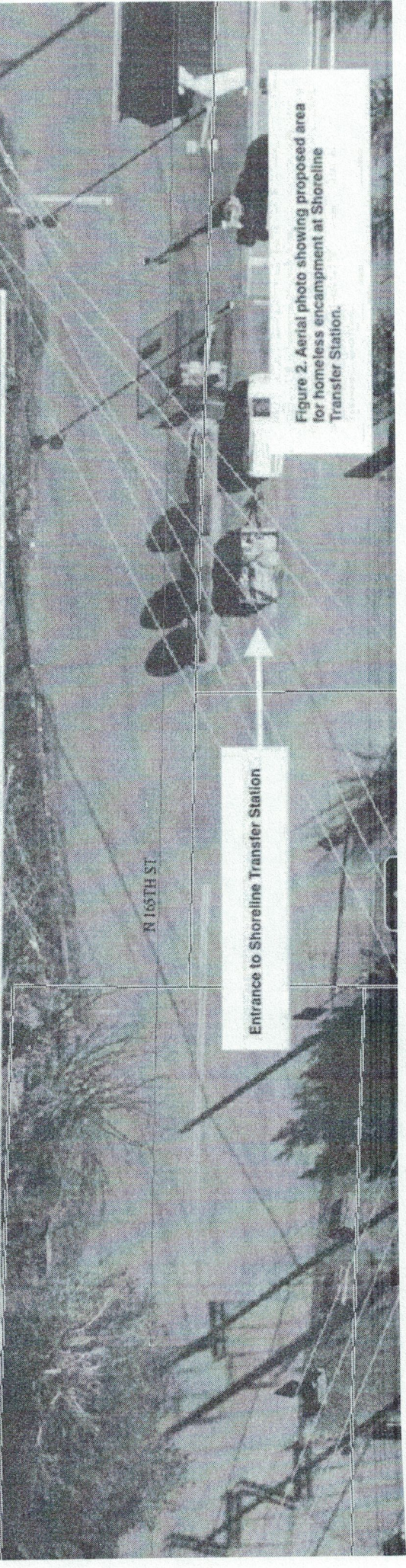


2400 N. 165TH ST

N 165TH ST

Entrance to Shoreline Transfer Station

Figure 2. Aerial photo showing proposed area for homeless encampment at Shoreline Transfer Station.



CAMP UNITED WE STAND



“Camp United We Stand Inc. is a community designed by the homeless for the homeless in transition. Camp United We Stand is a legally sanctioned encampment. We apply for permits from the City of Shoreline and the churches that shelters us. We are a non-profit with 501 (c) 3 status. We welcome all to come and show their support and provide services for those in need and in transition.”

TO ESTABLISH RELATIONSHIPS WITH OUR BELOVED COMMUNITIES.

WE ARE YOUR UNSHELTERED NEIGHBORS.

CUWS -2021

WHO ARE WE?

Many of the campers have been Shoreline residents and attended local schools. All of the campers sign a Code of Conduct. The rules for CUWS are strictly enforced. The residents are screened. No sex offenders or people with outstanding warrants are permitted. No weapons are permitted in the camp. No street drugs or alcohol are permitted in the camp.

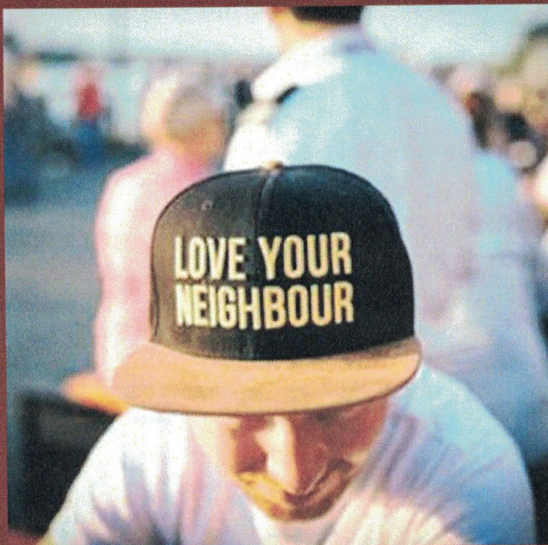


**SECURITY OFFICE MANNED 24/7
DONATIONS DROP OFF —VISITORS SIGN IN**

Camp United We Stand, Inc.

envisioning a world without homelessness in which communities come together to promote a better quality of life for those in need.

We work toward this mission by operating a transient homeless encampment in the northern Seattle/Shoreline area for the provision of shelter, the residents' daily needs and to facilitate their transition to independent living.



TO ESTABLISH RELATIONSHIPS WITH OUR BELOVED COMMUNITIES



CAMP UNITED WE STAND



NEXT LOCATION:
ST. DUNSTAN'S EPISCOPAL CHURCH
722 N 145th ST
SHORELINE WA 98133
MAY THROUGH AUGUST 2021

Our Values include the following:

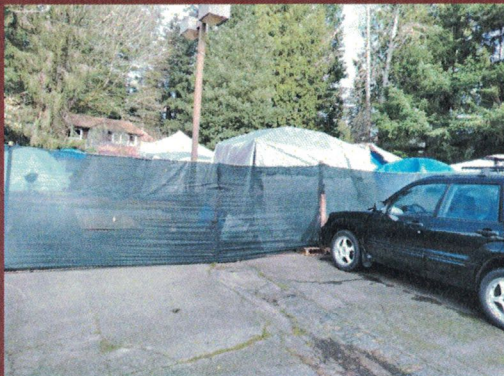
Respect for all individuals.

Justice expressed in advocating for an end to homelessness.

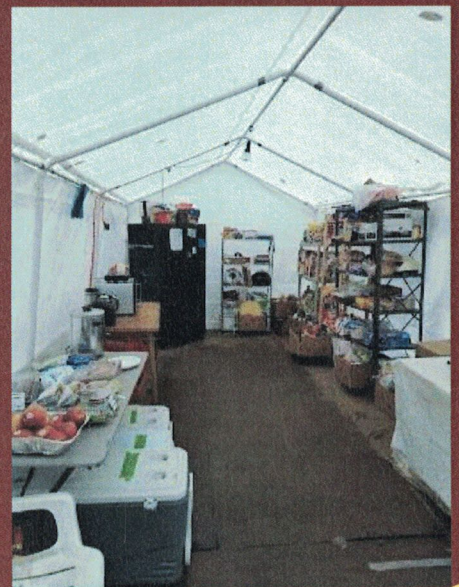
Empowerment expressed in the belief that homeless people have the capacity to excel and to shape their own path.

Stewardship recognized in the responsible use and management of resources entrusted to our care.

Active participation in all phases of the administration and management of our homeless encampment, including financial commitments,



KITCHEN TENT



TO ESTABLISH RELATIONSHIPS WITH OUR BELOVED COMMUNITIES

CAMP UNITED WE STAND

WE NEED YOUR SUPPORT

NEEDS LIST

- ◆ TENTS
- ◆ TARPS
- ◆ 2 X 4
- ◆ SLEEPING BAGS
- ◆ COMFORTERS
- ◆ WIPES
- ◆ WARM SOCKS
- ◆ PAPER CUPS
- ◆ PAPER PLATE
- ◆ PAPER BOWLS
- ◆ PLASTIC FORKS
- ◆ PLASTIC SPOONS



**HANDS OUTSTRETCHED - KNEES BARE,
HOLES IN SOCKS, HELP NEEDED**

Please visit our website:

<https://campunitedwestand-tentcity.org/> :

CAMP CELL PHONE: 425.616.8853

PRESENT LOCATION:

SHORELINE FREE METHODIST CHURCH

510 NE 175TH ST

SHORELINE WA 98155

TO ESTABLISH RELATIONSHIPS WITH OUR BELOVED COMMUNI-