

PLAT OF

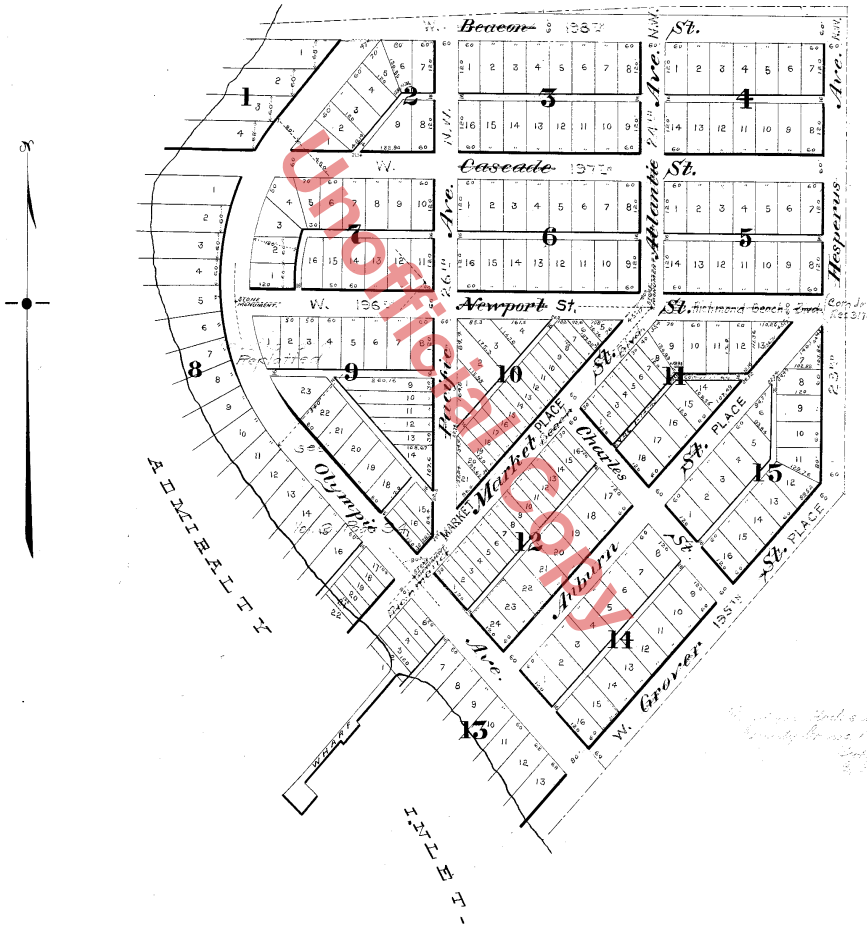
RICHMOND BEACH

KING CO.,

WASH.

Scale 1 inch = 100ft.
Scale of record 1 inch = 200ft.

Soury & Owens,
Civil Engineers, Seattle, Wash.
5-90.



Description.

This plat is situated upon lots 2 and 3 and the S.W. 1/4 of the N.E. 1/4 of section 2 Twp. 26 N. Range 3 E. The North line of lots 1-2-3 and 4 is 1625.23 ft. south of the mander corner on the North line of said section 2. Stone monuments are placed at the intersections of the center lines of Newport and Market Sts., and Olympic Avenue, and said monuments govern the location of all streets, blocks & lots in this plat. Lots are 60x100ft. except fractional ones which are as indicated on plat. Streets are 60ft. wide except Olympic Ave. which is 80ft. wide. Alleys are 10ft. wide.

56495

Filed for record at the request of C. W. Smith, June 13 A.D. 1890, at 17 min. past 11 AM, and recorded in Vol VI of plats, page 18, Records of King County, Wash.

W. H. H. Auditor

Dedication.

I, now all men by those presents that are C. W. Smith and C. Angeline Smith his wife owners in fee simple of the above described tract of land do hereby declare this plat of Richmond Beach and dedicate to the uses of the public forever all the streets, avenues and alleys shown hereon. In witness whereof we have hereunto set our hand and seals this 7th day of June A.D. 1890.

In presence of
H. A. Owens } C. W. Smith
H. T. Hannon } C. Angeline Smith
by Chas. Wesley Smith
her attorney in fact.

Acknowledgment.

State of Washington }
County of King }

This is to certify that on this 7th day of June A.D. 1890, personally came before me, the undersigned a Notary Public in and for the State of Washington, Chas. Wesley Smith, personally known to me to be the same person who executed the foregoing dedication of plat and he for himself and as the attorney in fact of C. Angeline Smith his wife acknowledged to me that he signed and sealed the same freely and voluntarily for the uses and purposes therein mentioned.



In witness whereof I have this day hereunto set my hand and affixed my official seal the day and year in this certificate first named.

Harvey T. Hannon,
Notary Public in and for the
State of Wash. residing in
Seattle.

E. Kendall Rec.

Information concerning the purchase of this plat may be obtained from the Auditor of King County, Wash.