

[Type here]

## **Parks Bond Project Update 07/04/2025**

### **Jacob Bilbo – Capital Projects Manager**

To clearly distinguish between the progressive design-build package of eight parks and development of new parcels, staff have grouped projects into these phases:

- Phase I: (Progressive Design-Build bundle) including Ridgecrest, Kruckeberg, Shoreview, Richmond Highlands, James Keough, Brugger's Bog, Hamlin, and Hillwood
- Phase II: (Design Development) West Echo Lake, Westminster, and parcel at 192<sup>nd</sup> (Hemlock)

Project updates are publicized through Currents, news releases, social media updates, eNotifications, the City's website: <https://www.shorelinewa.gov/government/projects-initiatives/2022-park-bond-projects-phase-ii>

#### **A. Phase I**

##### **1. Construction Update**

At Richmond Highlands, frontage and parking lot improvements were completed, including a revision to the parking lot to preserve a significant Douglas Fir tree. The parking lot on Fremont Ave is now open and is being used for summer programming at the Rec Center. The playground was completed, and significant progress has been made at the sensory garden and ball field. We are still on schedule to reach substantial completion in the fall.

At James Keough, we have made significant progress including installation of the off-leash dog area fence, concrete paths, play area, skate features, and utilities. We are also still on schedule to re-open in the fall. Photos of construction progress are included with Attachment A.

##### **2. Remaining Project Development**

Hamlin Park ballfield 5 was closed on March 24 for early site demolition and the parking lot along 25<sup>th</sup> AVE will be closed on July 25<sup>th</sup> for a construction trailer and staging area. We anticipate issuance of permits for Brugger's Bog in early August and are preparing to start construction in the fall. Hillwood remains delayed as we continue to apply for a Critical Area Special Use Permit. We are still striving to begin the project this year.

Staff will be planning ribbon-cutting ceremonies for Richmond Highlands and James Keough in fall 2025.

#### **B. Phase II**

##### **1. New Park Designs (Westminster, West Echo Lake, Parcel at 192nd)**

The public engagement phase was completed in the spring. The data collected from public engagement was synthesized and used to develop concept plans for each park. Residents had the opportunity to comment on each concept plan during tabling sessions and an online survey. Afterwards final preferred concept designs were developed. Staff and design consultant team (ABLE) presented the public engagement results and final concept drawings to the PRCS/Tree Board for review and comment. Concept designs will be posted publicly starting the week of 7/14/2025. The preferred concept designs are included in Attachment B. Westminster Park will be constructed based on final design and funding availability in the near future. The other two parks will not be immediately looked at for development as there are grant opportunities in the coming year which could leverage City funding and potentially impact some specific design details.

##### **2. Design of Edwin Pratt Memorial Park**

[Type here]

Edwin Pratt Park is the City's longest-held undeveloped property (land banked). Staff applied for and received a Department of Commerce grant in the amount of \$130,000 to fund the design of this park. As a result, staff have decided to move forward with designing this park. This work will be included with ABLE's contract, who is our landscape designer previously selected for the Phase II projects.

We are in the early stages of scoping this work and developing a public engagement plan. Public engagement will likely mirror previous efforts with a focus on adjacent neighborhoods and stakeholders. Staff will provide the PRCS/Tree Board with an update once these plans are near completion. Our current goal is to begin public engagement in August 2025 and end with bid-ready construction documents towards the end of 2026.

New playground at Richmond Highlands.



New ball field and fencing at Richmond Highlands



New playground equipment at James Keough.



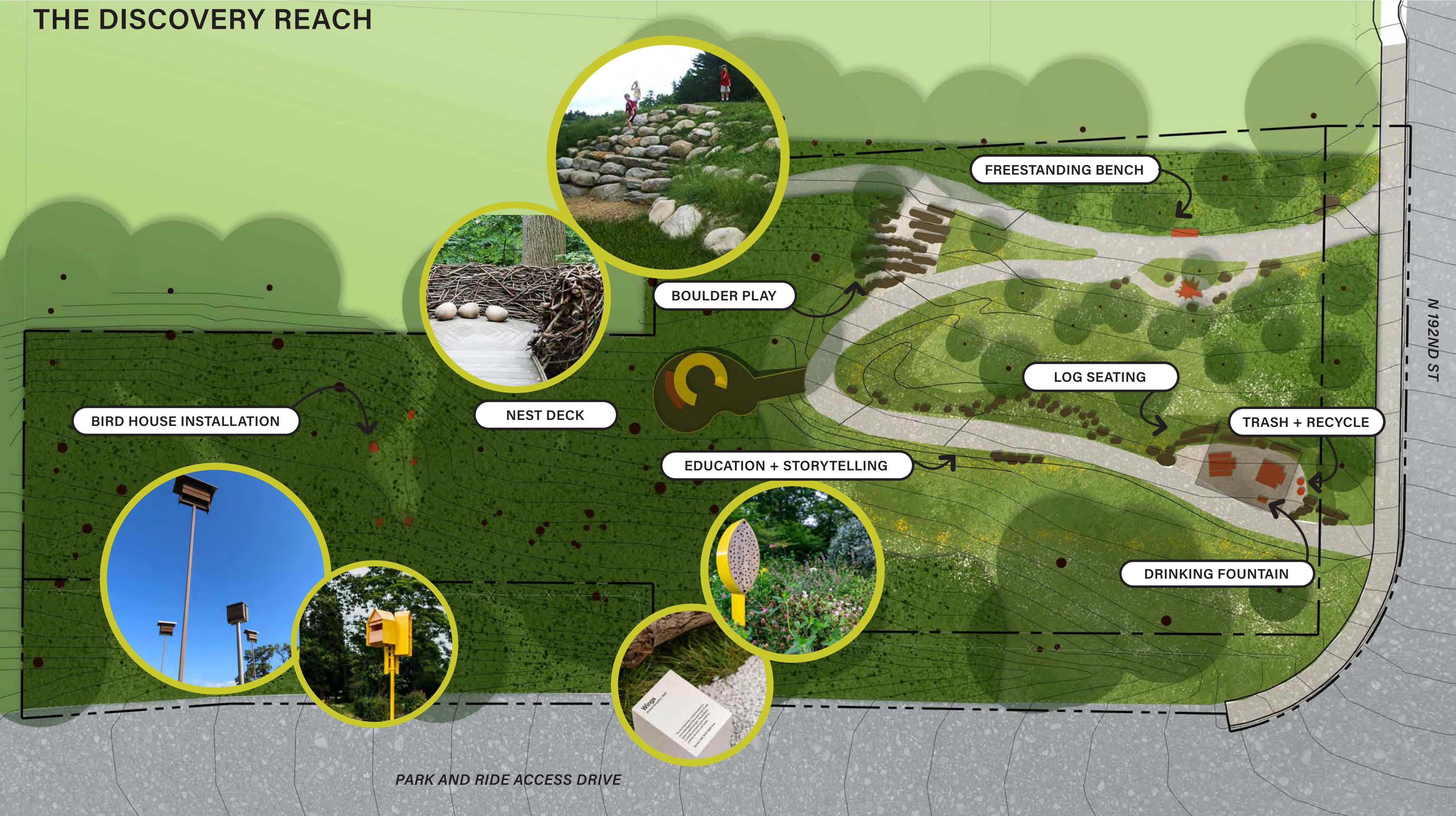
Skate features being installed at James Keough.





Parcel at: 192nd St & Shoreline P&R Acrd

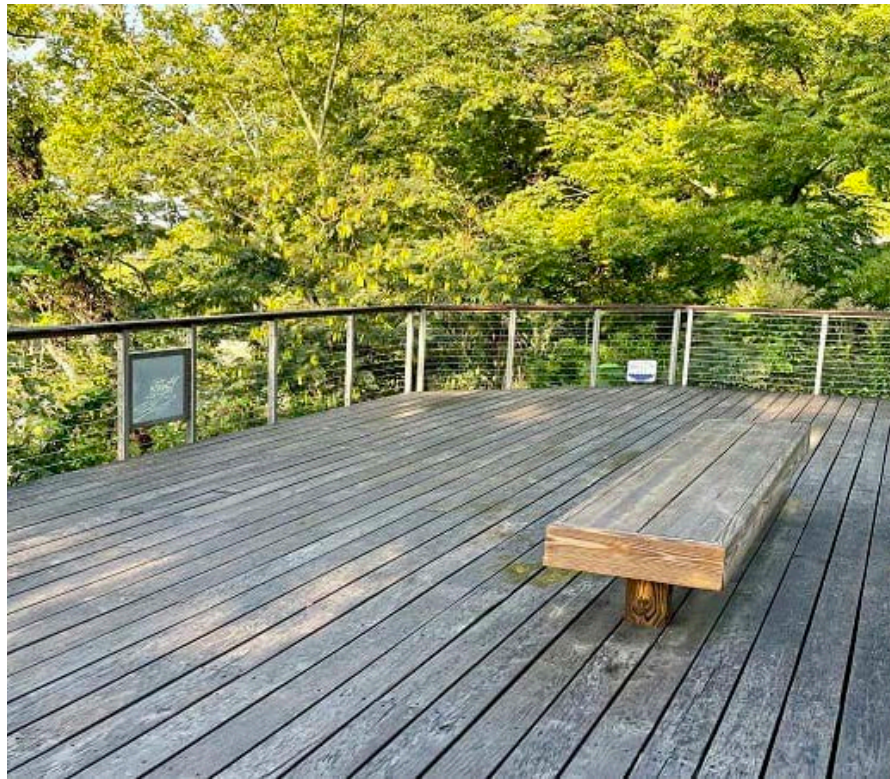
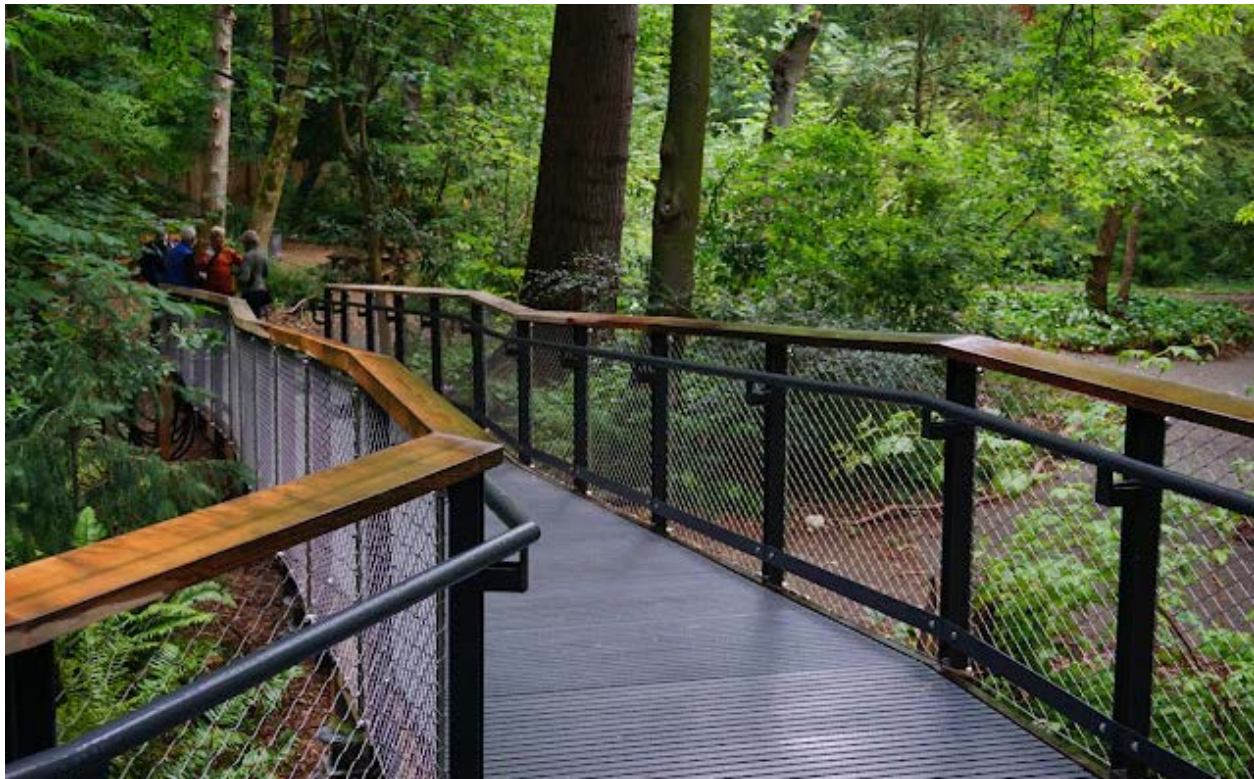
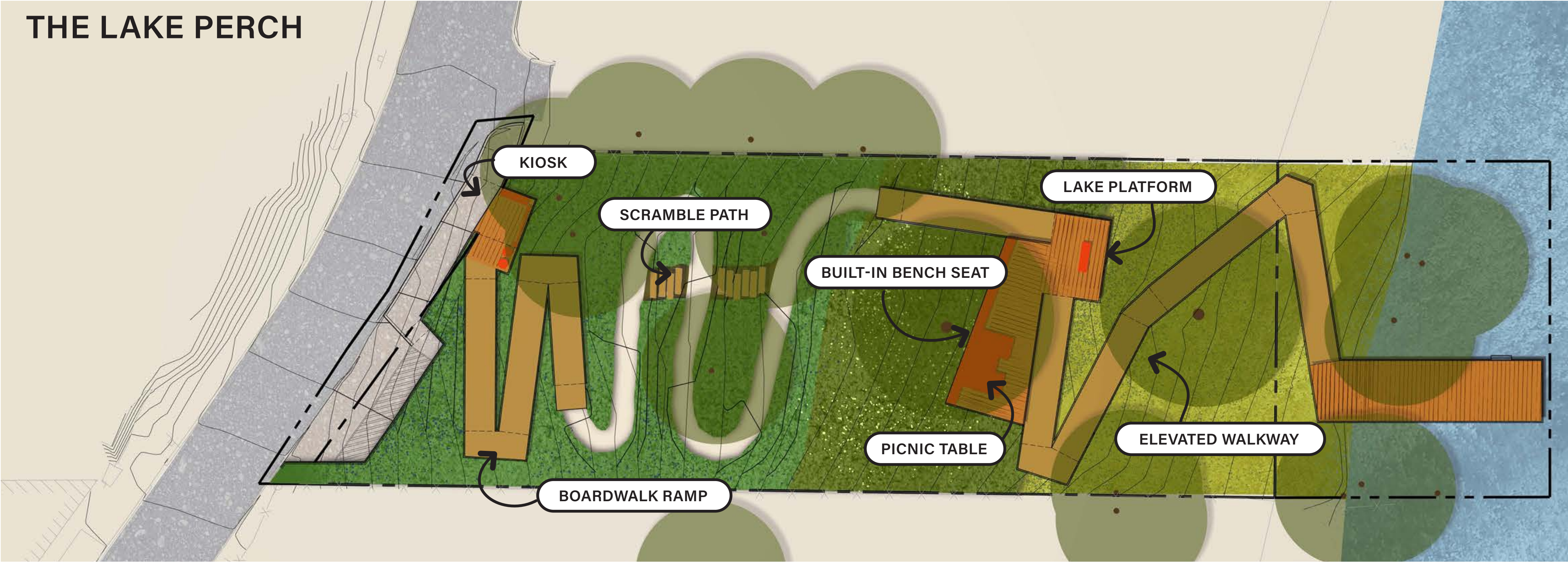
THE DISCOVERY REACH





West Echo Lake

THE LAKE PERCH





# Westminster Park



## THE ADVENTURE HOLLOW

