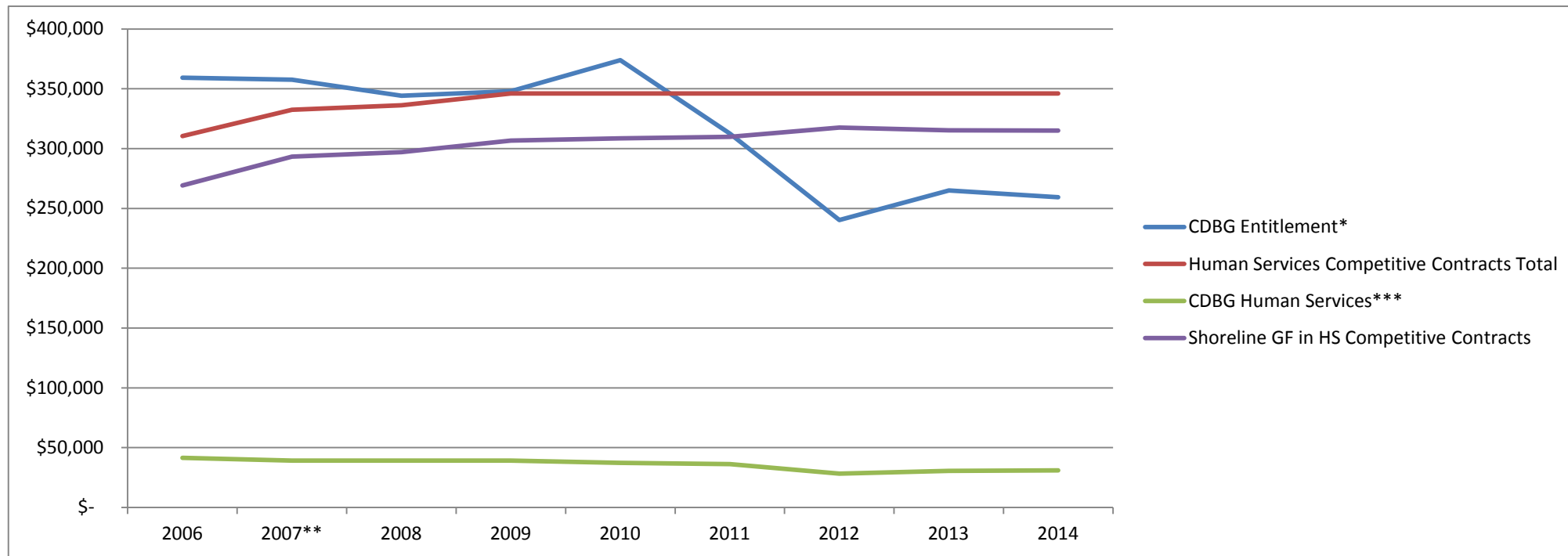


	2006	2007**	2008	2009	2010	2011	2012	2013	2014	
CDBG Entitlement*	\$ 359,302	\$ 357,484	\$ 344,206	\$ 348,019	\$ 373,943	\$ 312,578	\$ 240,357	\$ 264,995	\$ 259,298	
CDBG Human Services***	\$ 41,407	\$ 39,268	\$ 39,268	\$ 39,268	\$ 37,394	\$ 36,215	\$ 28,335	\$ 30,705	\$ 30,956	
Shoreline GF in HS Competitive Contracts	\$ 269,133	\$ 293,282	\$ 296,951	\$ 306,713	\$ 308,587	\$ 309,766	\$ 317,646	\$ 315,276	\$ 315,025	17%
Human Services Competitive Contracts Total	\$ 310,540	\$ 332,550	\$ 336,219	\$ 345,981	\$ 345,981	\$ 345,981	\$ 345,981	\$ 345,981	\$ 345,981	2.13%



* Includes all elements of CDBG funding: Direct Services, Capital (Minor Home Repair and agency capital), Major Home Repair, Homelessness Project and Program Administration, HS Competitive Contracts

**added \$18k senior center additional funding in 2007

***this figure is calculated as 10% of the total of the CDBG Entitlement and Program Income