

Figure 3.5




# Green Infrastructure Opportunity Map

## Legend

### Opportunities

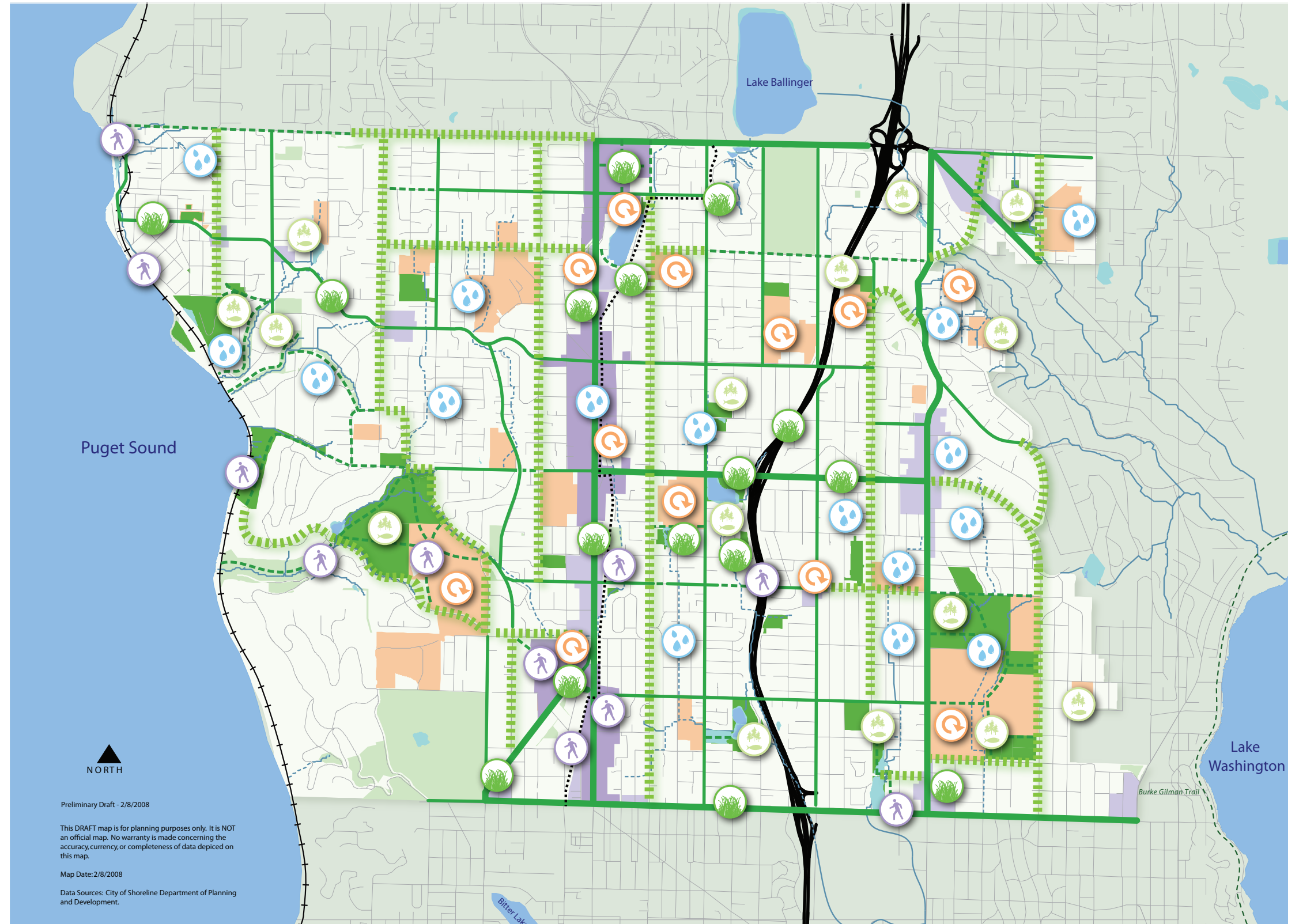
-  Natural Landscaping
-  Public Access
-  Natural Drainage
-  Habitat Enhancement
-  Low Impact Development & Green Building

### Green Streets

-  Green Streets
-  Complete Streets
-  Pedestrian Paths

### Current features

-  City Boundary
-  I-5
-  Street
-  Interurban Trail
-  Railroad
-  Open Watercourse
-  Piped Watercourse
-  Water
-  Wetlands
-  High Intensity Land Use Hub
-  Medium Intensity Land Use Hub
-  Public & Private Institutions
-  Shoreline Parks
-  Private Open Space



This map shows potential green infrastructure opportunities and how they could be physically integrated into the Shoreline community. It does not represent any officially adopted plans at this time.