

ATTACHMENT P:

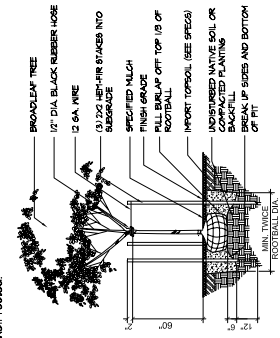
**LANDSCAPE PLAN**

# LANDSCAPE SCHEDULE

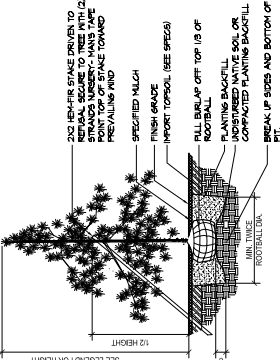
SYMBOL	QTY.	SCIENTIFIC NAME	COMMON NAME	REMARKS/DESCRIPTION
<b>DECIDUOUS TREES</b>				
4		<i>Camptocarpus japonicum</i>	Kobara Tree	1-1/2" cal., 1-5' ht., well-branched, B&B, spacing as shown on plan.
16		<i>Acer circinnatum</i>	Vine Maple	Multi-stem, min. 3 @ 1" cal., min. 12' ht., well-branched, B&B, spacing as shown on plan.
6		<i>Acer palmatum</i>	Bloodgood Japanese Maple	1-1/2" cal., 1-5' ht., well-branched, B&B, spacing as shown on plan.
<b>CONIFER TREES</b>				
5		<i>Thuja plicata 'Hogan'</i>	Hogan Cedar	5-6' ht., full and bushy to base, spacing as shown on plan.
<b>MEDIUM / LARGE SHRUBS</b>				
27		<i>Moronea o. 'Orange Flame'</i>	Orange Flame Oregon Grape	Min. 24" spread/ht., full and bushy, B&B or cont. spacing as shown on plan.
17		<i>Holly-hed. 'Oncasitha'</i>	Holly-hed. Oncasitha	Min. 24" spread/ht., full and bushy, B&B or cont. spacing as shown on plan.
22		<i>Pieris japonica 'Forest Flame'</i>	Forest Flame Pieris	Min. 24" spread/ht., full and bushy, B&B or cont. spacing as shown on plan.
11		<i>Thuja occ. 'Emerald'</i>	Emerald Green Arborvitae	4-5' ht., full and bushy, B&B or container, spacing as shown.
35		<i>Yuccinia ovatum</i>	Evergreen huckleberry	Min. 24" spread/ht., full and bushy, B&B or cont. spacing as shown on plan.
34		<i>Symphoricarpos alba</i>	Shrubbery	Min. 24" spread/ht., full and bushy, B&B or cont. spacing as shown on plan.
11		<i>Hamamelis 'Intermedia 'Dore'</i>	Dore Hamamelis	Min. 24" spread/ht., full and bushy, B&B or cont. spacing as shown on plan.
32		<i>Euonymus o. 'Compactus'</i>	Dwarf Winged Euonymus	Min. 24" spread/ht., full and bushy, B&B or cont. spacing as shown on plan.
51		<i>Prunus l. 'Oto Luyken'</i>	Oto Luyken Laurel	Min. 24" spread/ht., full and bushy, B&B or cont. spacing as shown on plan.
<b>SMALL SHRUBS</b>				
73		<i>Cornus stolonifera 'Kobajae'</i>	Dwarf Redwing Dogwood	Min. 15" spread/ht., full and bushy, B&B or cont. spacing as shown on plan.
77		<i>Gaultheria spicata</i>	Soldi	1 gal. cont. full and bushy, spacing as shown on plan.
4		<i>Phlox mugo mugo</i>	Night Phlox	Min. 15" spread/ht., full and bushy, B&B or cont. spacing as shown on plan.
45		<i>Spiraea j. 'Pink Princess'</i>	Pink Flowering Spiraea	Min. 15" spread/ht., full and bushy, B&B or cont. spacing as shown on plan.
<b>GROUNDCOVERS, VINES AND FERNS</b>				
		<i>Actinostaphylos variabilis</i>	Kinnikinnick	1 gal. @ 20" o.c. triangular spacing, cont. tp.
		<i>Naxosia repens</i>	Creeping Oregon Grape	1 gal. @ 30" o.c. triangular spacing, cont. tp.
		<i>Fragaria chilensis</i>	Sand Strawberry	4" pots @ 18" o.c. triangular spacing, cont. tp.
		<i>Polygatum multiflorum</i>	Sword Fern	1 gal. cont. full, min. 10" healthy fronds per plant on transplantation from on-site, spacing as shown on plan.
		Seed Lawn		See specs.
		Infiltration Pond Seed Mix		See specs.
<b>INFILTRATION POND PLANTING MIX</b>				
40		<i>Iris ensata</i>	Japanese Iris	1 gal. cont. full, well branched. Plant in random groups of 5-7 @ 30" O.C.
60		<i>Carex edusa 'Aurea'</i>	Aurea Golden Sedge	
60		<i>Cornus stolonifera 'Kobajae'</i>	Dwarf Redwing Dogwood	
300		<i>Fragaria chilensis</i>	Sand Strawberry	
		Fence		

## PLANTING NOTES

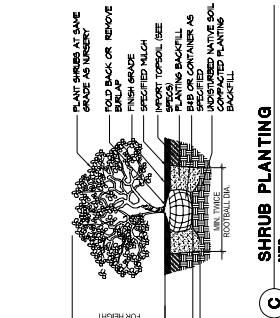
- ALL NEW LANDSCAPE AREAS ARE TO BE WATERED WITH AN AUTOMATIC WATER CONSERVING IRRIGATION SYSTEM.
- ALL NEW SHRUB AND GROUNDCOVER AREAS ARE TO BE MULCHED WITH A MINIMUM 2" DEPTH OF SPECIFIED MULCH.
- WHERE GROUNDCOVER IS PROVIDED, IT SHALL BE PLANTED AT THE SPECIFIED SPACINGS THROUGHOUT THE BED, INCLUDING AREAS UNDERNEATH TREES AND SHRUBS. START FIRST ROW 12" FROM EDGE OF BED.
- REFER TO SPECIFICATIONS FOR ADDITIONAL REQUIREMENTS.



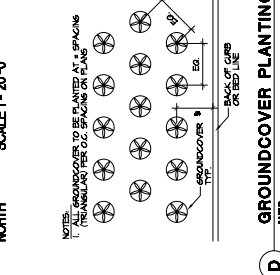
**A DECIDUOUS TREE PLANTING**  
NTS



**B CONIFER TREE PLANTING**  
NTS



**C SHRUB PLANTING**  
NTS



**D GROUNDCOVER PLANTING**  
NTS

THIS PLAN IS FOR CODE SUBMITTAL TO GOVERNING JURISDICTIONS AND IS NOT FOR BIDDING OR CONSTRUCTION.

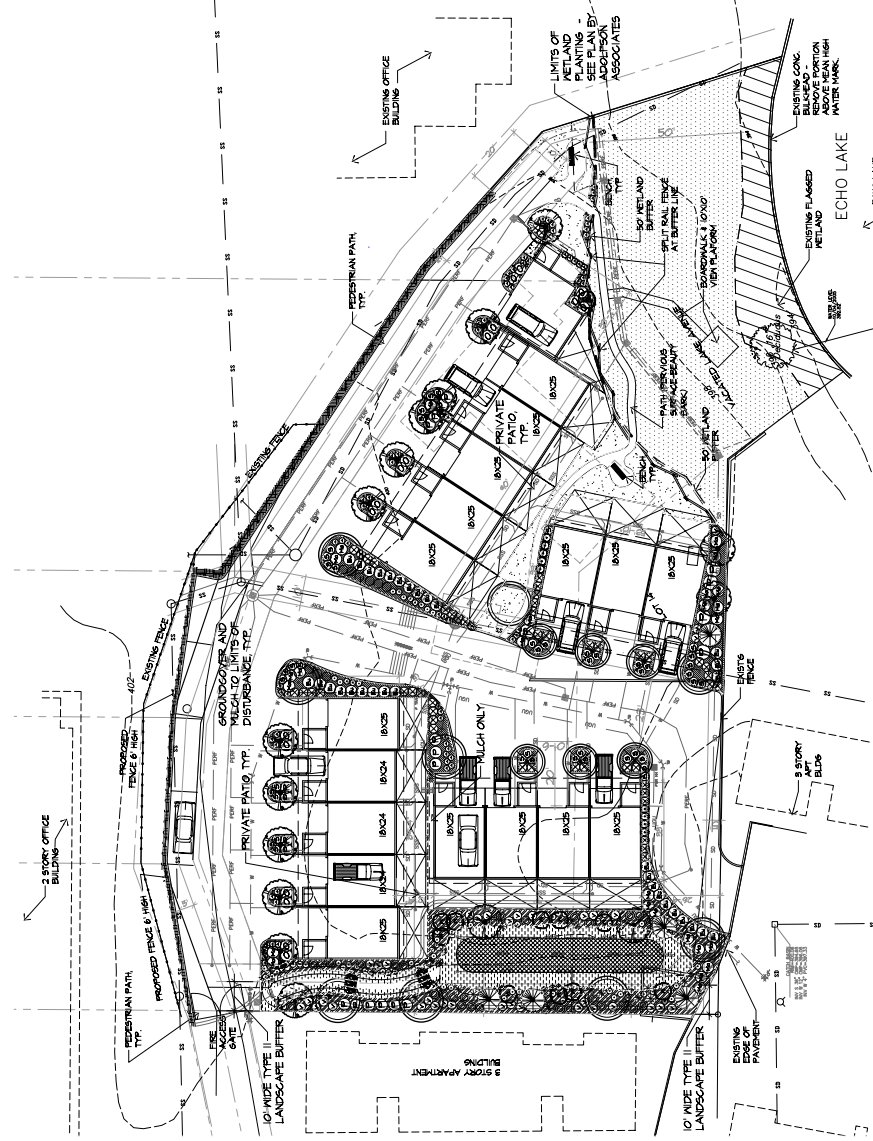
L1.01  
Sheet

LANDSCAPE PLAN



Prescott Homes, Inc.  
1160 N 198th Street, Shoreline, Washington

WEISMAN DESIGN GROUP  
2222 EAST ANDERSON STREET  
SUITE 100, BELLEVUE, WA 98005  
PH: 206.272.2222 FAX: 206.272.2299  
INTERNET: WWW.WEISMANDC.COM



NOTES:  
1. ALL GROUNDCOVER TO BE PLANTED AT SPACINGS INDICATED BY THE PLANTING PLAN.  
2. REMOVE EXISTING CONCRETE AND REPAIR WITH 4" MIN. THICK ASPHALT.  
3. REMOVE EXISTING CONCRETE AND REPAIR WITH 4" MIN. THICK ASPHALT.  
4. REMOVE EXISTING CONCRETE AND REPAIR WITH 4" MIN. THICK ASPHALT.