

## **APPENDIX B**

### **PHOTOS**

**SEGMENT A**



**Photo A-1 View of the Paramount Washington property at Point Wells  
(Ecology, 2006)**



**Photo A-2 View of the natural habitat south of the Paramount  
Washington property**

**SEGMENT B**

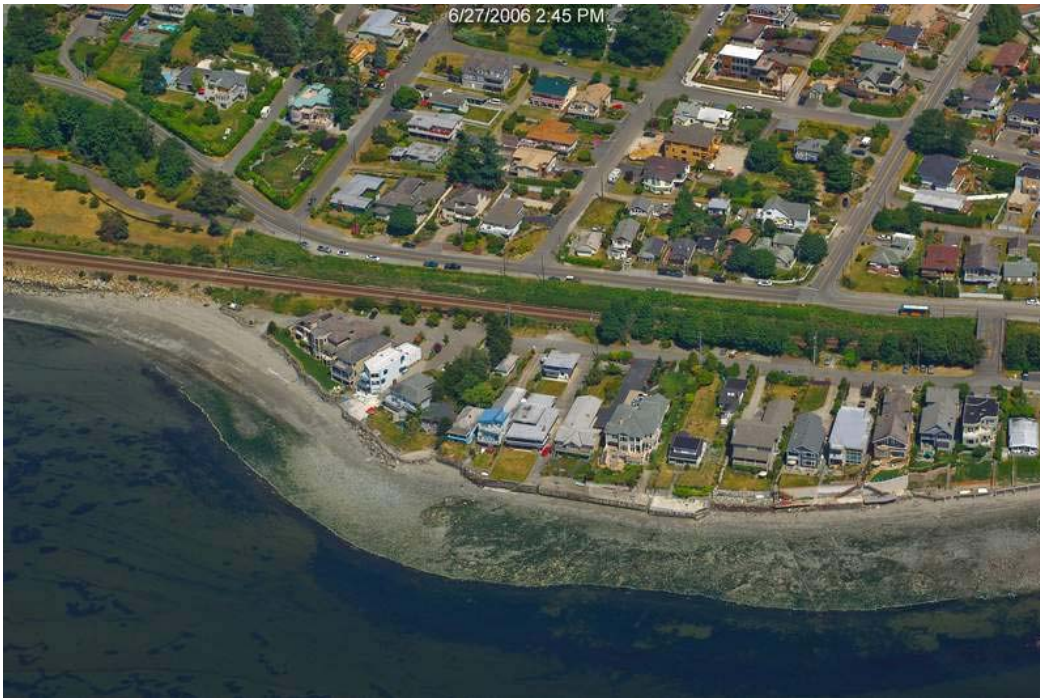


**Photo B-1 Northernmost view of Segment B; Two outlets of Barnacle Creek are visible at shoreline (Ecology, 2006)**



**Photo B-2 Wetland associated with Barnacle Creek, east of the BNSF railroad tracks (Ecology, 2006)**





**Photo B-3 Northern end of residential development directly adjacent to the Puget Sound shoreline mid-segment (Ecology, 2006)**



**Photo B-4 Southern end of residential development directly adjacent to the Puget Sound shoreline mid-segment (Ecology, 2006)**



**Photo B-5 View of the private beach-front south of residences along 27th Avenue NW**



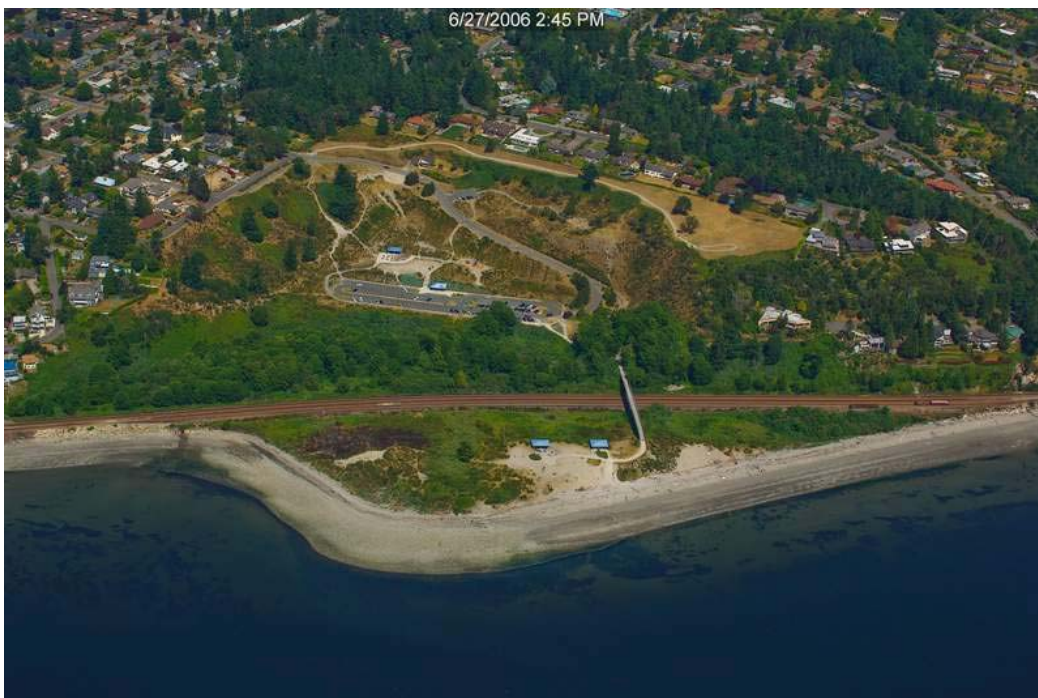
**Photo B-6 Barnacle Creek outlet to Puget Sound, at southern end of Segment B**



**SEGMENT C**



**Photo C-1 Potential drainage wetlands along the BNSF railroad within Segment C**



**Photo C-2 Richmond Beach Saltwater Park (Ecology, 2006)**



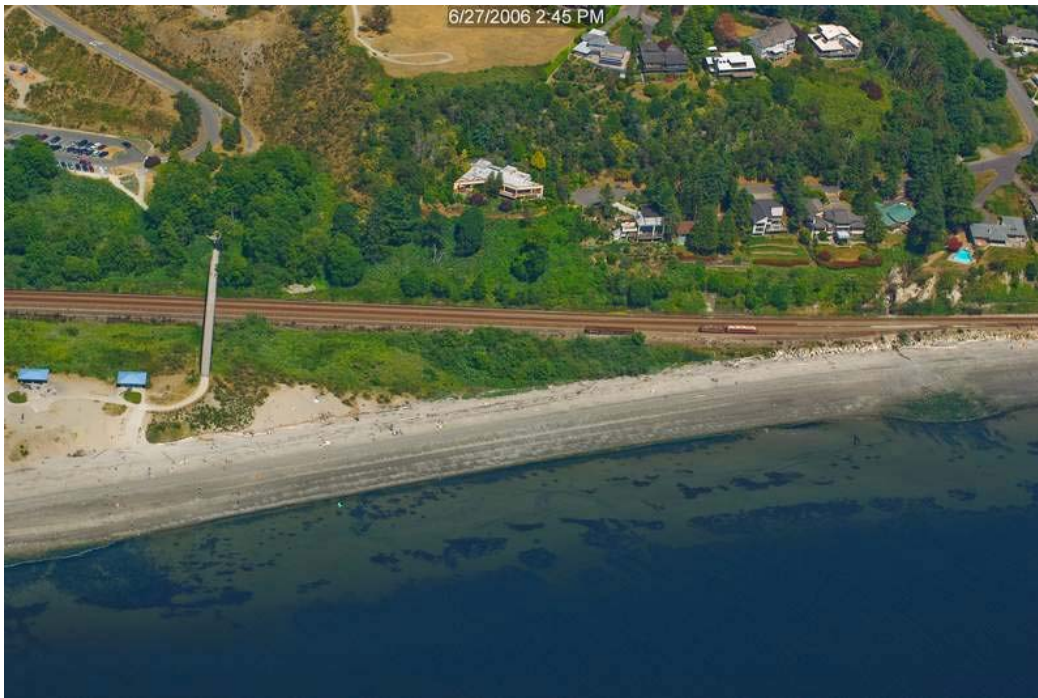
**Photo C-3 View of public access to the Puget Sound Shoreline within Richmond Beach Saltwater Park**



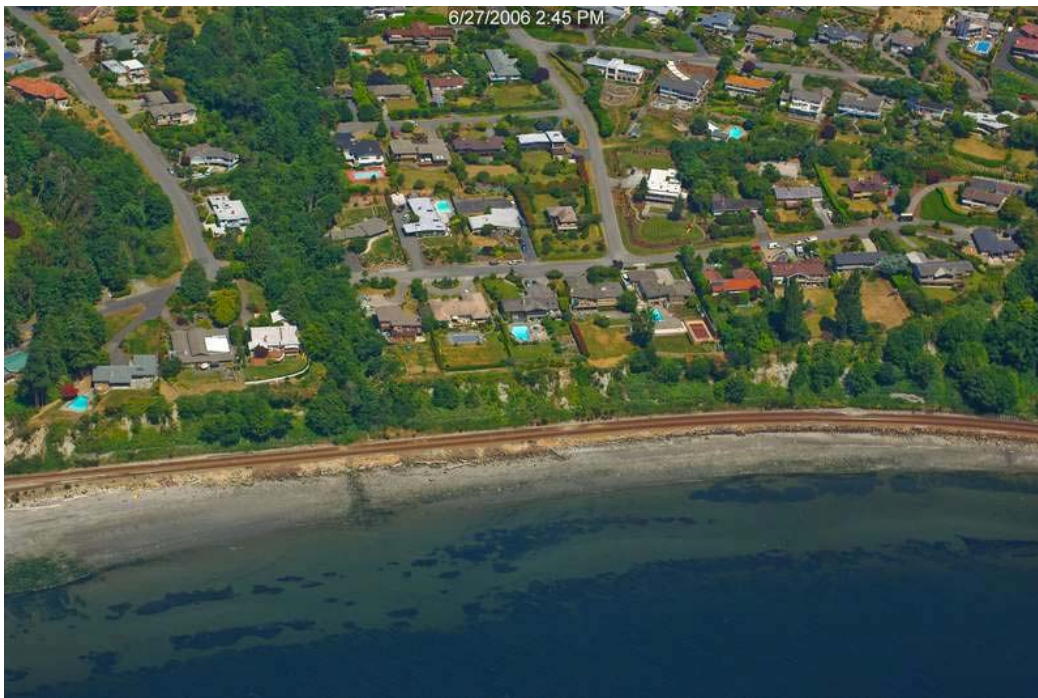
**Photo C-4 View of public access to the Puget Sound Shoreline within Richmond Beach Saltwater Park**



**SEGMENT D**



**Photo D-1 Shoreline development along northern section; Storm Creek outlet visible on the right side of the picture (Ecology, 2006)**



**Photo D-2 Medium-density development to the east of the BNSF railroad in the southern area; Blue Heron Creek outlet visible in the foreground (Ecology, 2006)**





**Photo D-3 View of Storm Creek’s outlet into Puget Sound and a steep slope characteristic of Segment D**

**SEGMENT E**

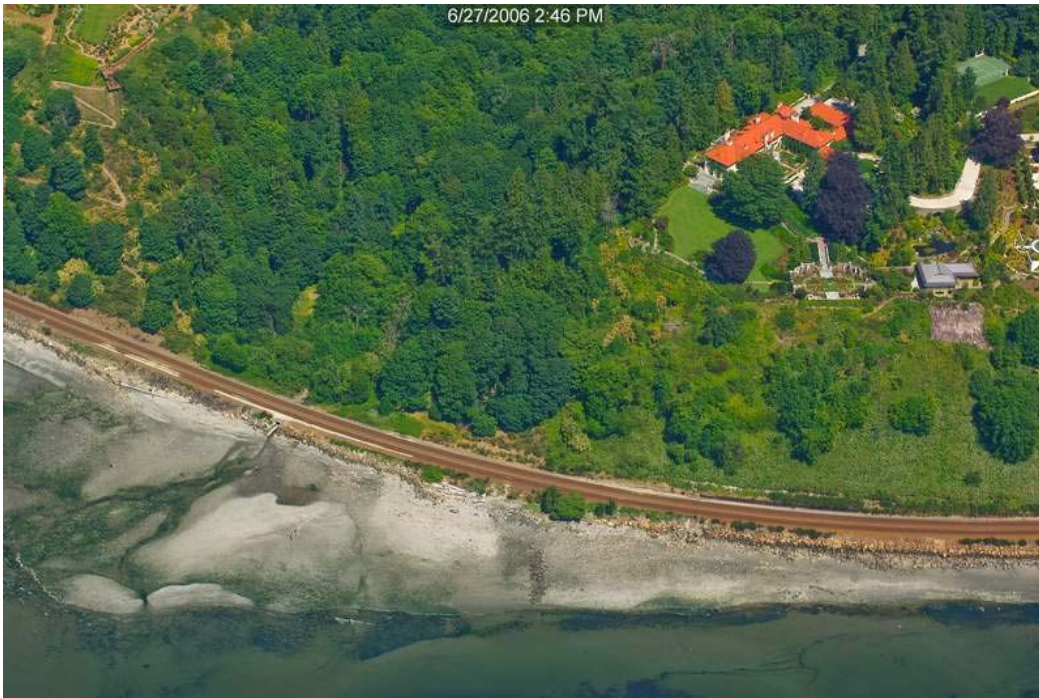


**Photo E-1 North end of Innis Arden Reserve (Ecology, 2006)**

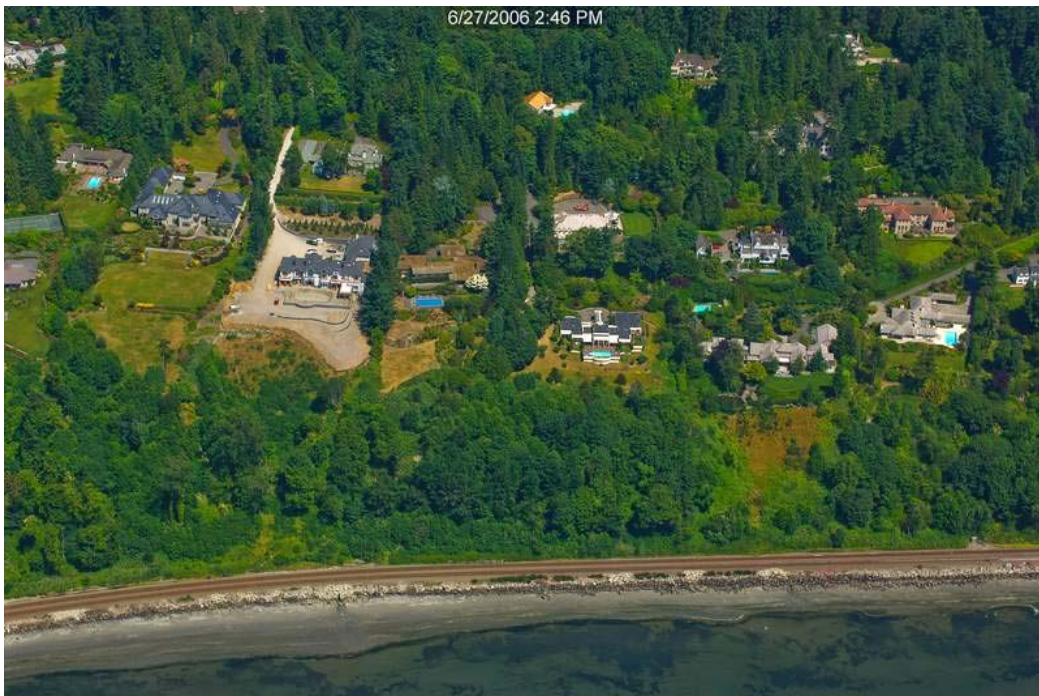


**Photo E-2 South end of Innis Arden Reserve, Boeing Creek visible at right edge of photo (Ecology, 2006)**

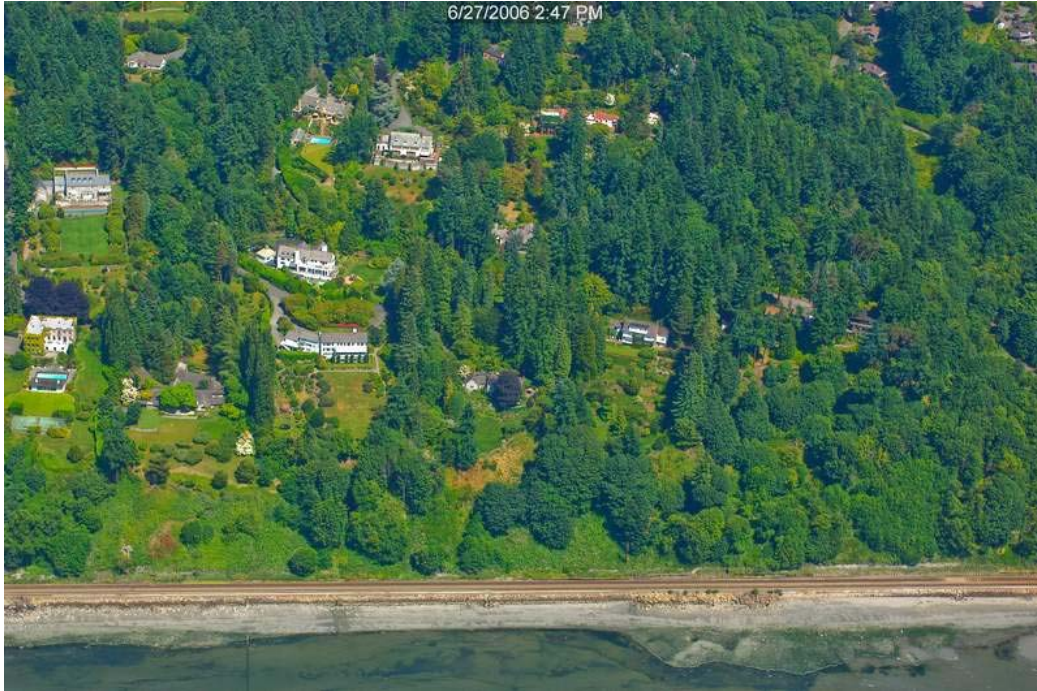




**Photo E-3 Boeing Creek reserve and outlet into Puget Sound (outlet visible in the left portion of the photo) (Ecology, 2006)**



**Photo E-4 Typical shoreline along Segment E characterized by heavily vegetated steep hillsides (Ecology, 2006)**



**Photo E-5 Typical shoreline along Segment E characterized by heavily vegetated steep hillsides separated from shoreline by BSNF railroad (Ecology, 2006)**