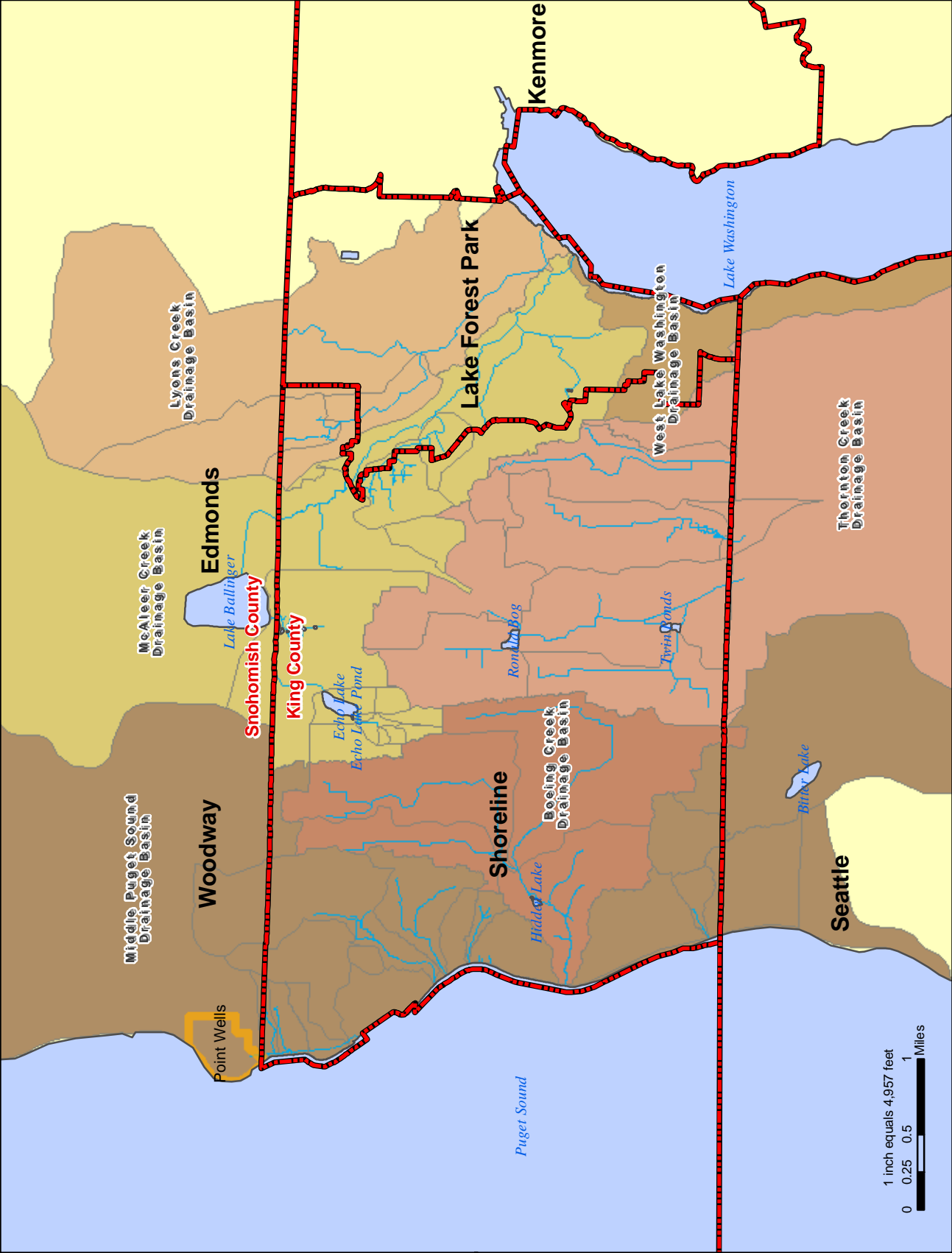


APPENDIX C

MAPFOLIO



Legend

- Open Water
- Point Wells
- King County City Limits
- Streams

Drainage Basin

Name	Color
Bitter Lake	Light Blue
Boeing Creek	Light Green
Lyons Creek	Light Yellow
McAleer Creek	Light Orange
Middle Puget Sound	Light Brown
Thornton Creek	Light Purple
West Lake Washington	Light Blue



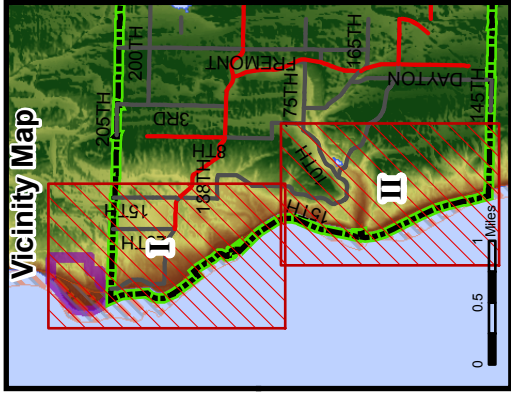
No warranties of any sort, including accuracy, fitness, or merchantability, accompany this product.

Data Source: City of Shoreline GIS & FEMA
 Projection: NAD_1983_HARN_StatePlane_Washington_North_FIPS_4601
 Date Modified: 05/12/2008

2008 City of Shoreline - SMP Update
 Map 2
Regional Context

SHORELINE

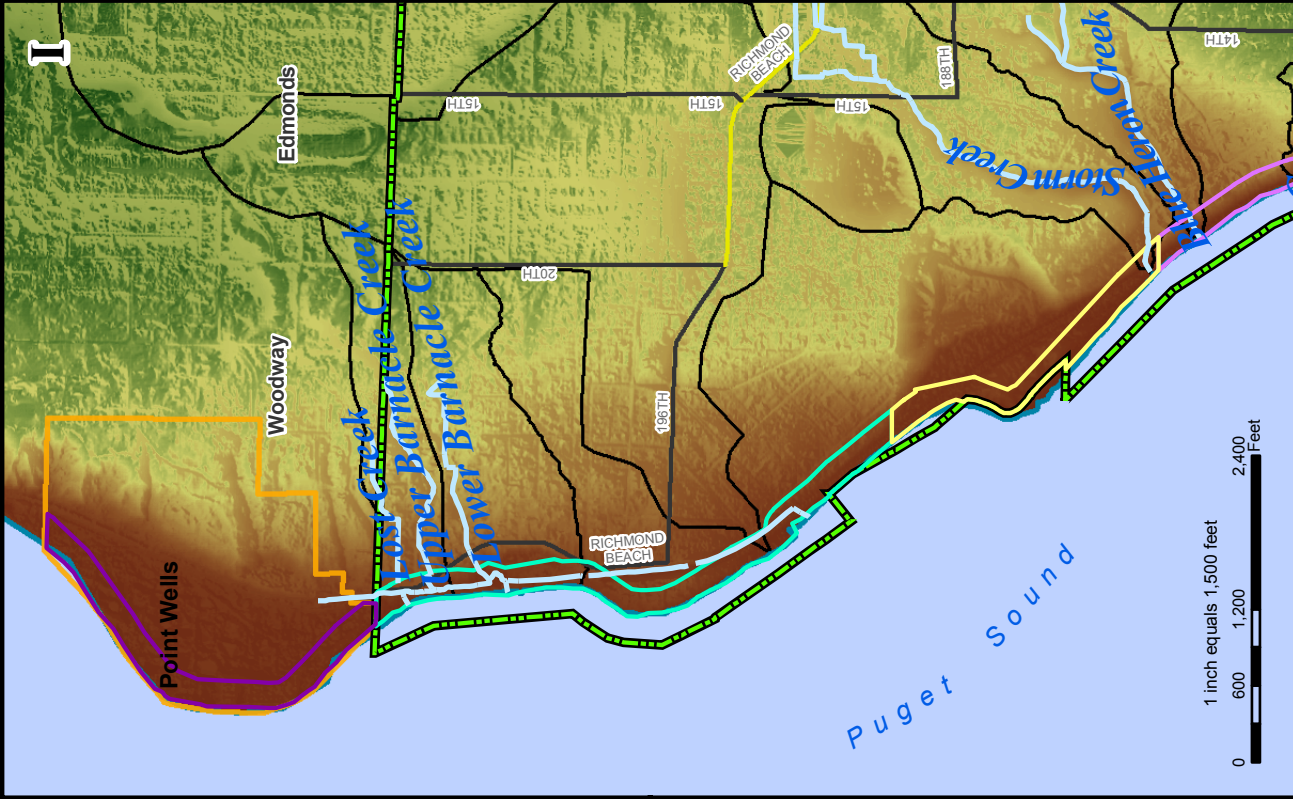
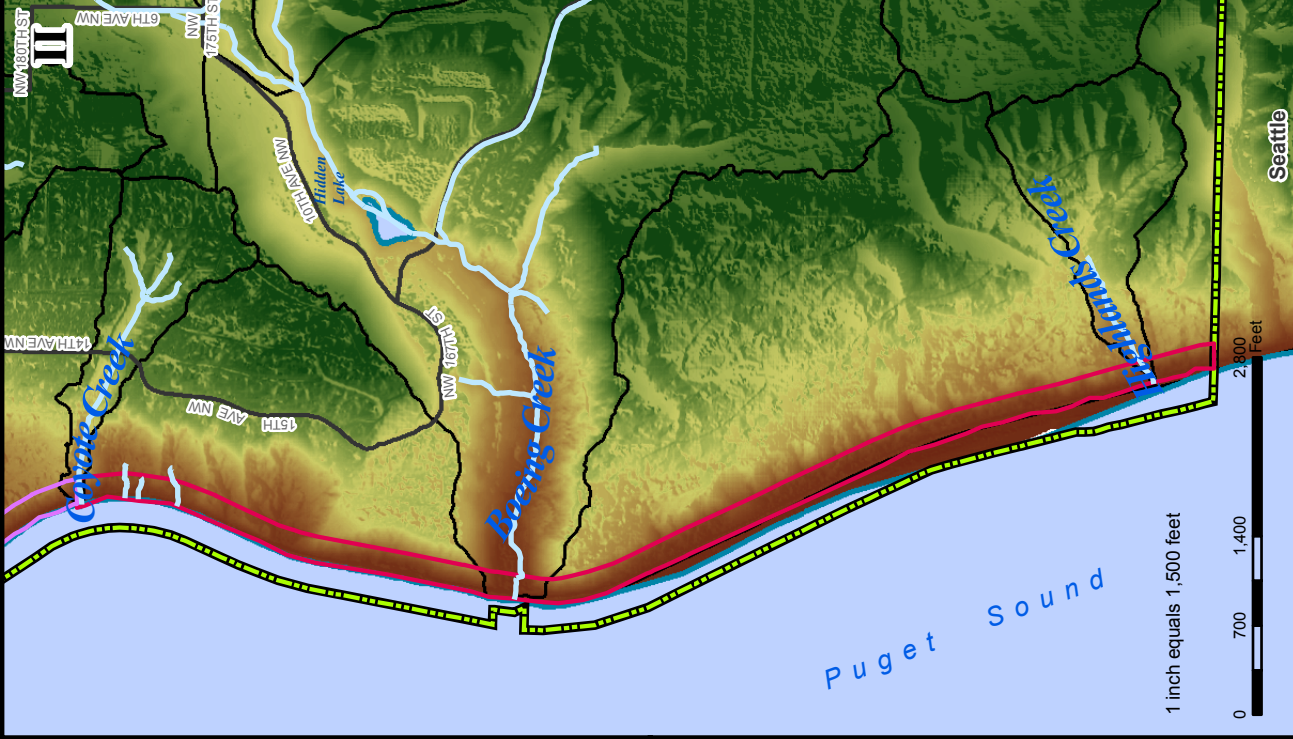
Geographic Information System



- Stream
- Drainage Sub-basin
- Topography**
- Elevation (ft)**
High : 560.347290
Low : 0
- Planning Segments**
A B C D E
- City Limits
- Potential Annexation Area
- Streets**
Collector Arterial
Minor Arterial
Open Water
Drainage Sub-basin



No warranties of any sort, including accuracy, fitness, or merchantability, accompany this product.

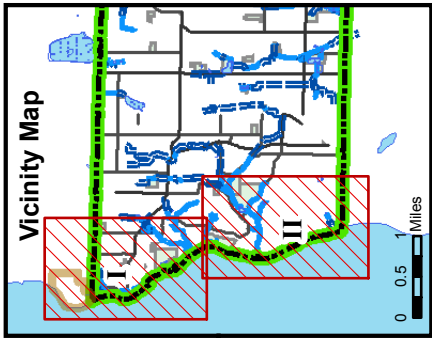


2008 City of Shoreline - SMP Update
Map 3

Topography & Hydrology

Data Source: City of Shoreline GIS & 2000 LIDAR (Topography)
Projection: NAD 1983 HARN StatePlane Washington, North FIPS 4601
Date Modified: 05/12/2008

Geographic Information System

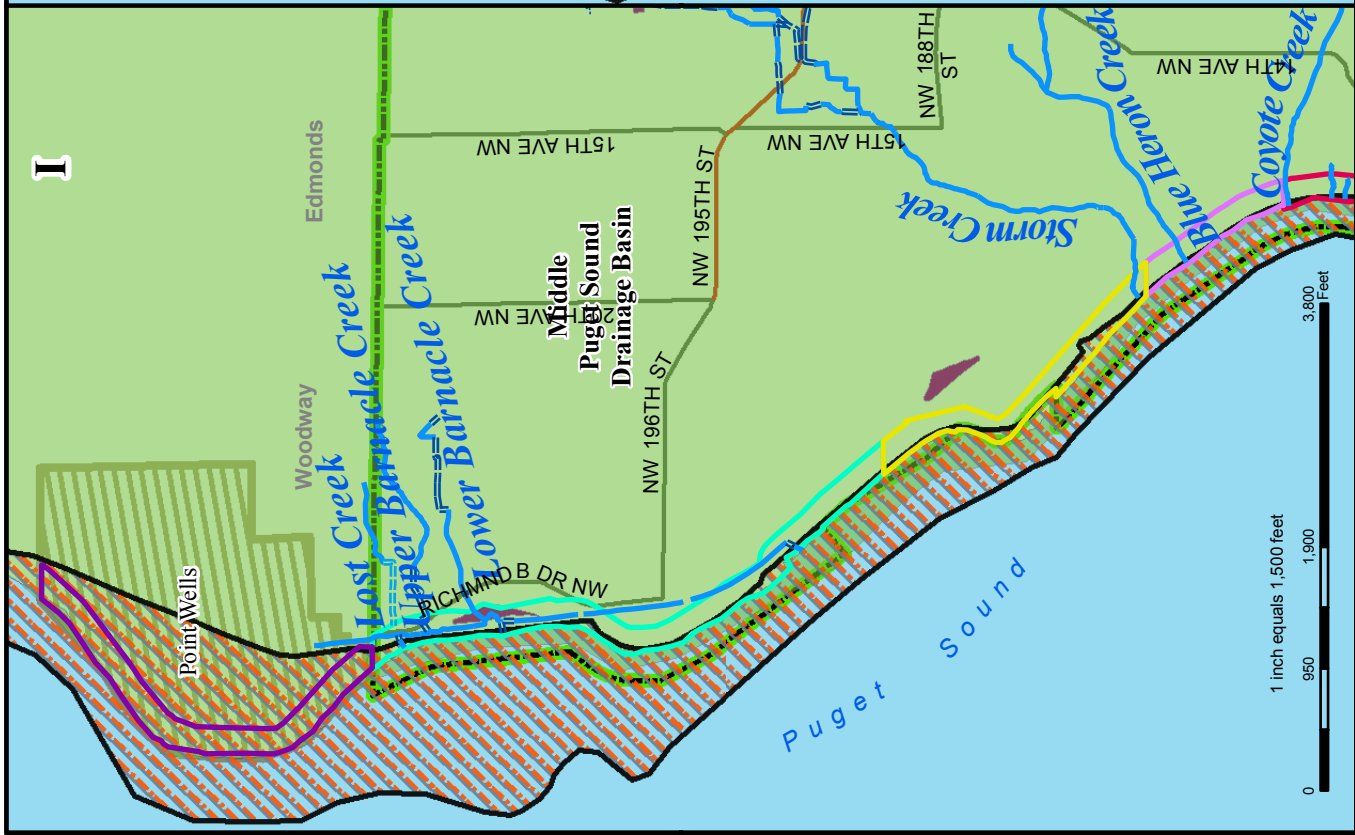
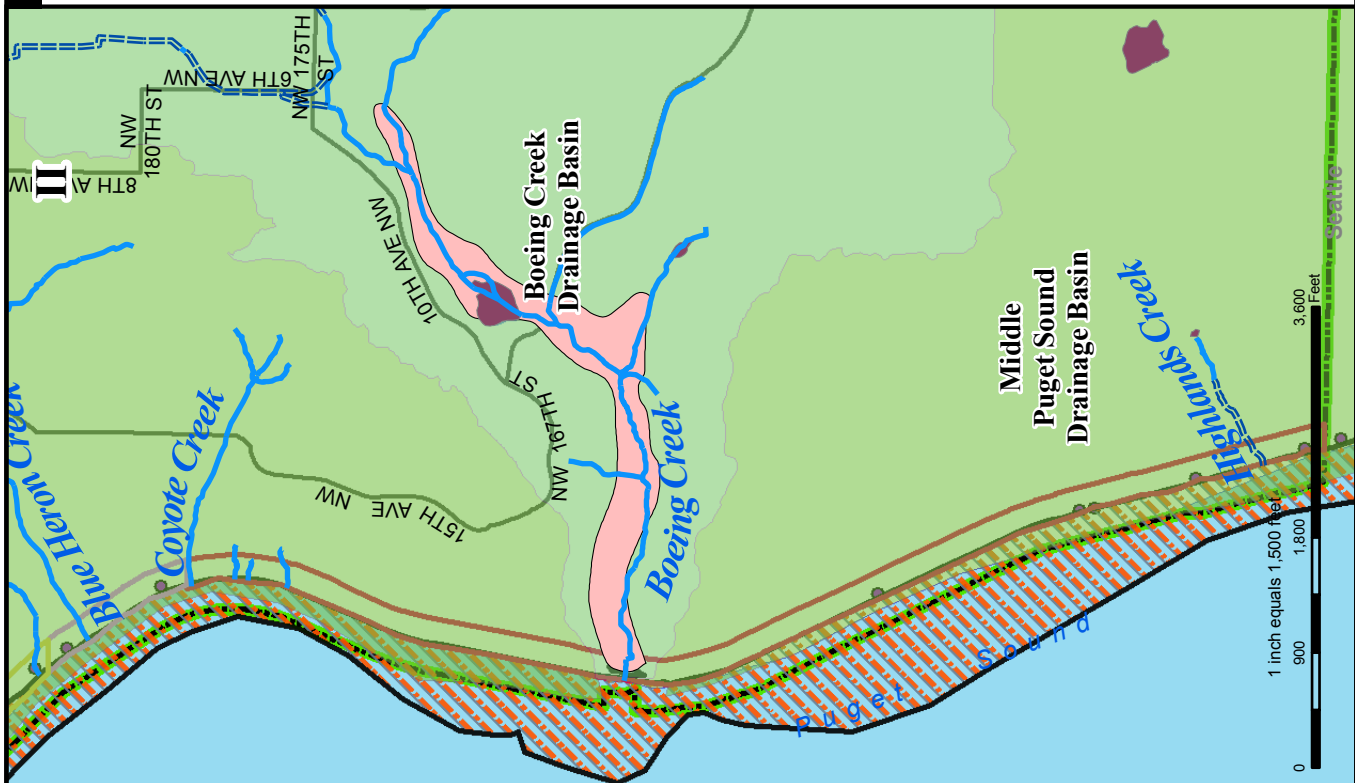


Critical Areas

Water Course

- TYPE**
- ==== Piped, Unconfirmed
- Open Water Course
- ==== Piped Water Course
- Wetland
- 100 Year Flood Plain
- A
- B
- C
- D
- E
- Flood Hazard Area
- Point Wells
- City Limit
- Open Water
- Collector Arterial
- Minor Arterial

No warranties of any sort, including accuracy, fitness, or merchantability, accompany this product.



Base Flood Elevation for the Puget Sound shoreline in all Segments (A, B, C, D, and E) will be 10 feet National Geodetic

Data Source: City of Shoreline GIS & USGS
 Projection: NAD_1983_HARN_StatePlane_Washington_North_FIPS_4601
 Date Modified: 05/12/2008

2008 City of Shoreline - SMP Update
Map 4

Drainage Basins and Floodplains

SHORELINE

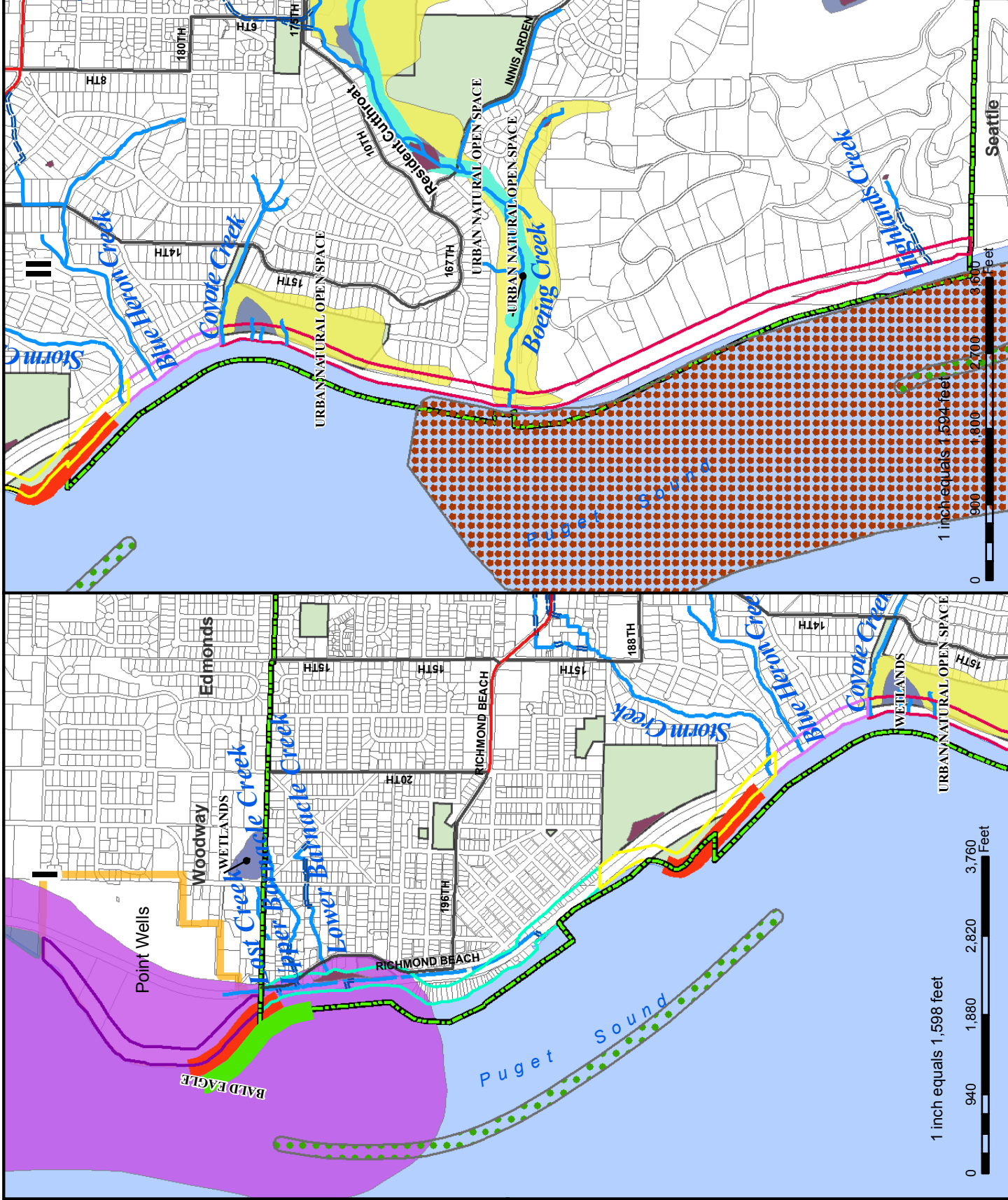
Geographic Information System

Vicinity Map

- Sandance Spawning
- Geoduck shellfish_**
 - Dungeness Crab
 - Geoduck
 - Surf Smelt
- Priority Habitat Species for Fish**
 - Resident Cutthroat
- Known Priority Habitats**
 - WETLANDS
 - BALD EAGLE
 - URBAN NATURAL OPEN SPACE
 - Wetland
- Common Name**
 - WETLANDS
 - BALD EAGLE
 - URBAN NATURAL OPEN SPACE
 - Wetland
- Water Course**
 - Open Water Course
 - Pipet Water Course
- Shoreline Jurisdictions**
 - A
 - B
 - C
 - D
 - E
 - Open Water
- Streets**
 - Collector Arterial
 - Minor Arterial
- Puget Sound Species of Fish:**
 - Chinook Salmon
 - Chum Salmon
 - Coho Salmon
 - Pink Salmon
 - Sockeye Salmon
 - Cutthroat Trout
 - Steelhead
 - Sand Lance
 - Surf Smelt
- City Limits**
 - City Limits
 - City Park
 - Tax Parcels



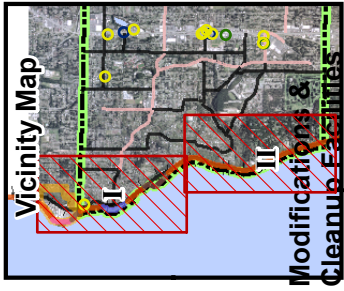
No warranties of any sort, including accuracy, fitness, or merchantability, accompany this product.



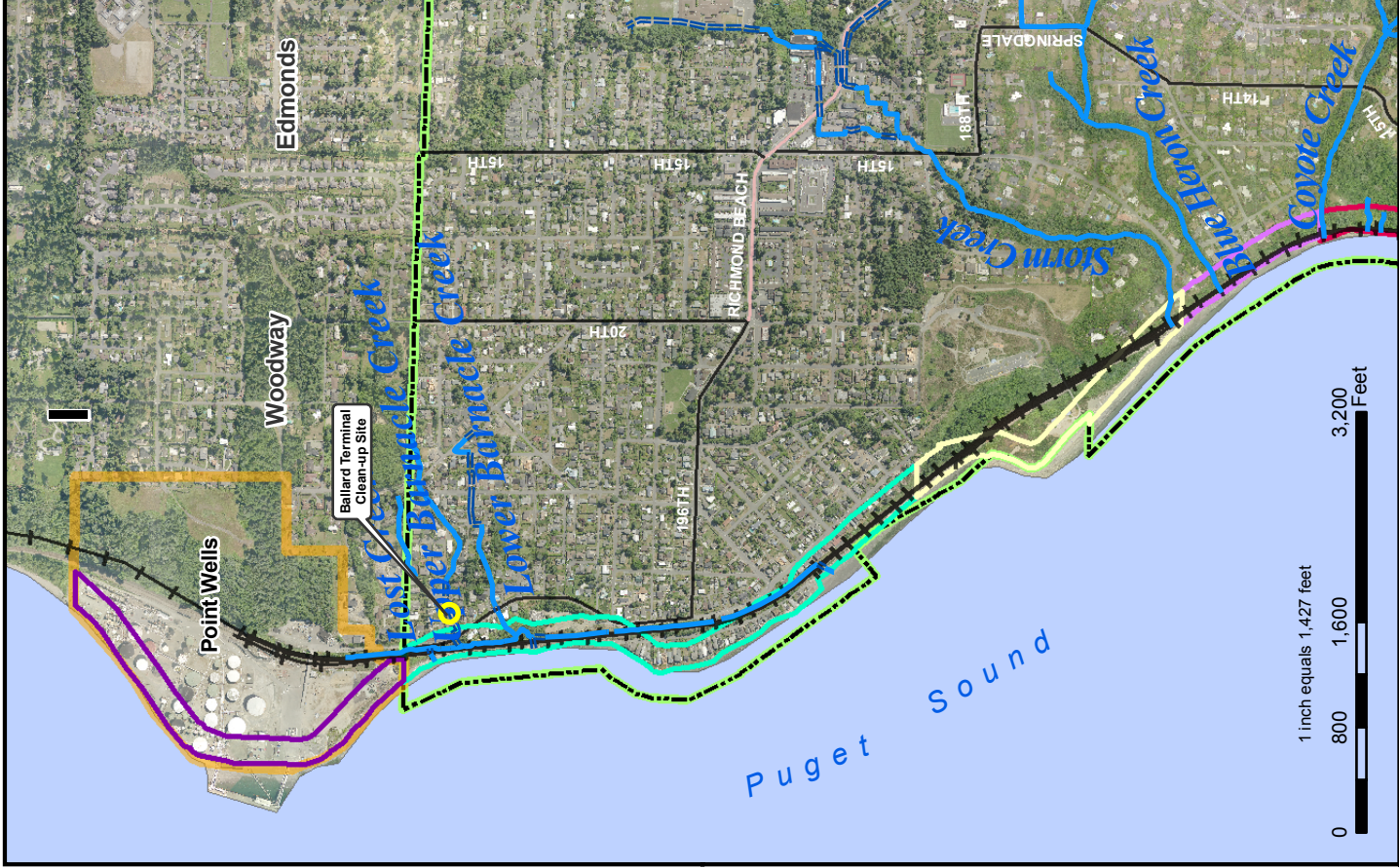
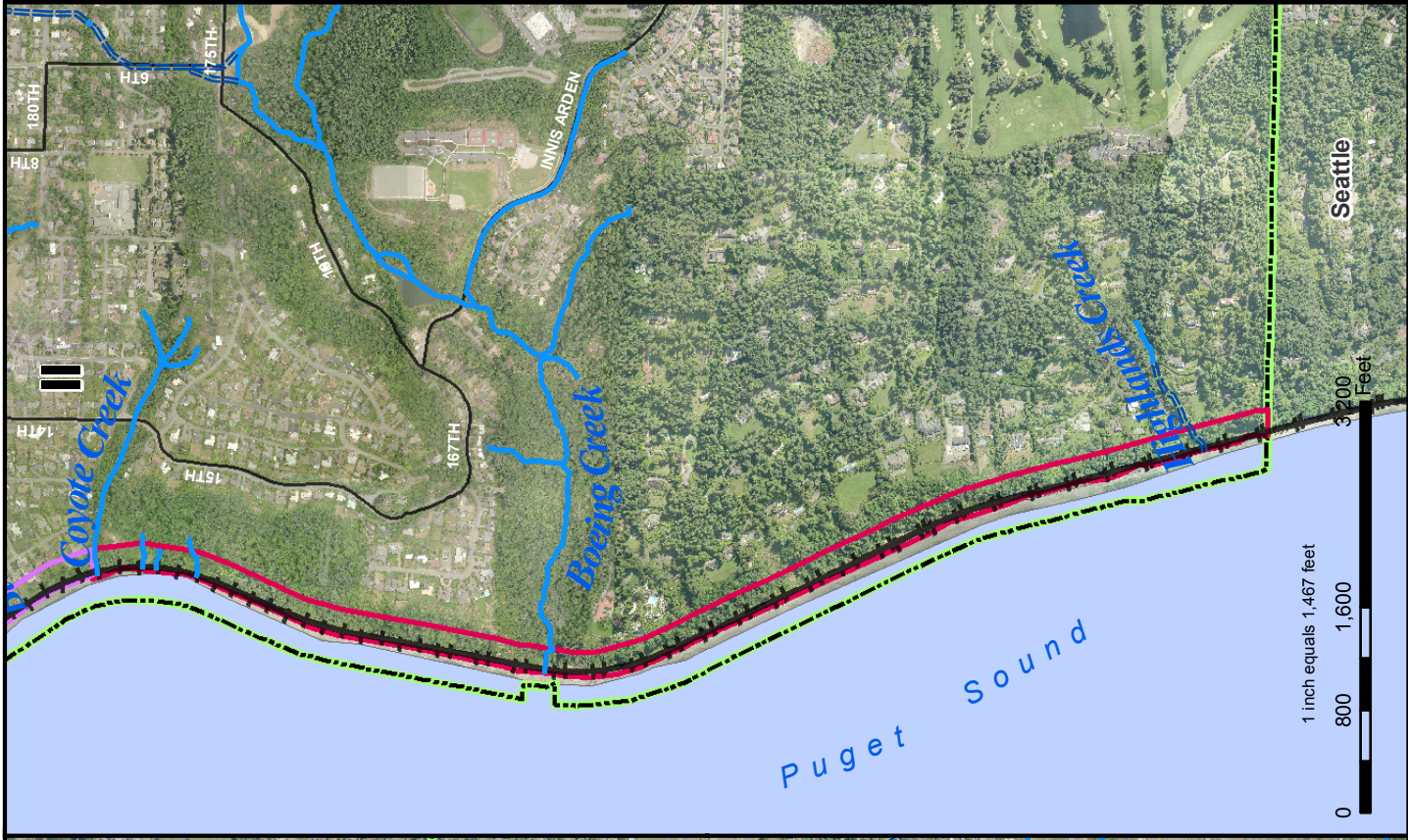
2008 City of Shoreline - SMP Update
Map 5

Fish and Wildlife Habitat

Data Source: City of Shoreline GIS & WDFW
 Projection: NAD_1983_HARN_StatePlane_Washington_North_EPS_4601
 Date Modified: 05/12/2008
 Wetland Source: From Tetra Tech Stream Characterization Report



- Voluntary Cleanup
- Water Course**
- TYPE**
- Open Water Course
- = Piped Water Course
- +— Railroad
- Shoreline Jurisdictions**
- A
- B
- C
- D
- E
- Potential Annexation Area
- Streets**
- Collector Arterial
- Minor Arterial
- - - City Limits
- Open Water



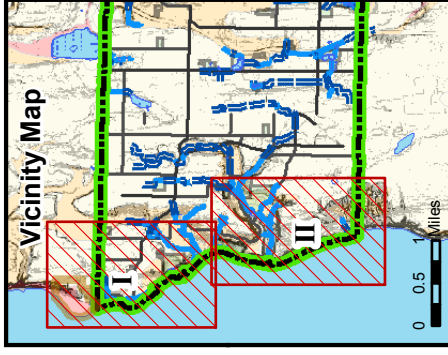
2008 City of Shoreline - SMP Update
 Map 6

Toxic and Hazardous Material Clean-up Sites

No warranties of any sort, including accuracy, fitness, or merchantability, accompany this product.

Data Source: WA State Department of Natural Resources (Modifications) & WA State Department of Ecology (Clean-up)
 Projection: NAD 1983 HARN, StatePlane,
 Zone 48N, Feet
 Date Modified: 05/22/2008

Geographic Information System



Critical Areas Legend

Water Course

- TYPE
- Open Water Course
- Piped Water Course

Landslide Hazard Slope > 40%

- 0 - 40
- greater than 40%

Liquefaction Susceptibility, Preliminary 2003

- High
- Moderate
- Low
- Very low
- Recent Land Slides

Streams

- Streams

Shoreline Jurisdictions

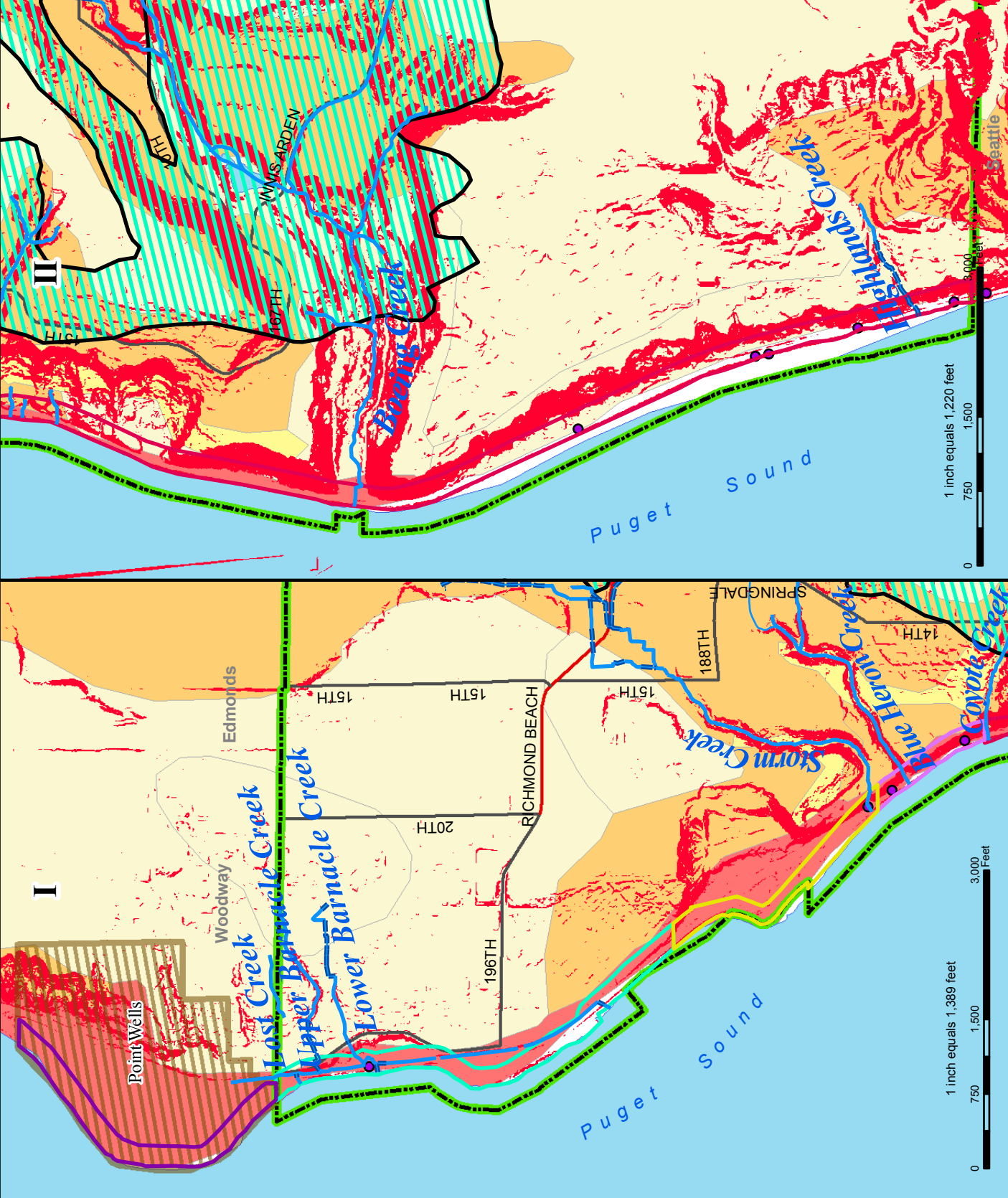
- A
- B
- C
- D
- E
- Erosion
- Potential Annexation Area
- City Limit
- Open Water

Streets

- Collector Arterial
- Minor Arterial



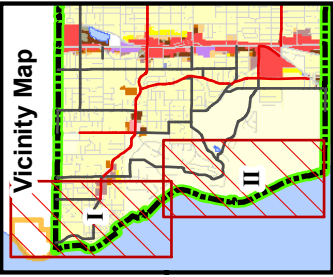
SHORELINE
No warranties of any sort, including accuracy, availability, or timeliness, accompany this product.



2008 City of Shoreline - SMP Update
Map 7

Geohazard Areas

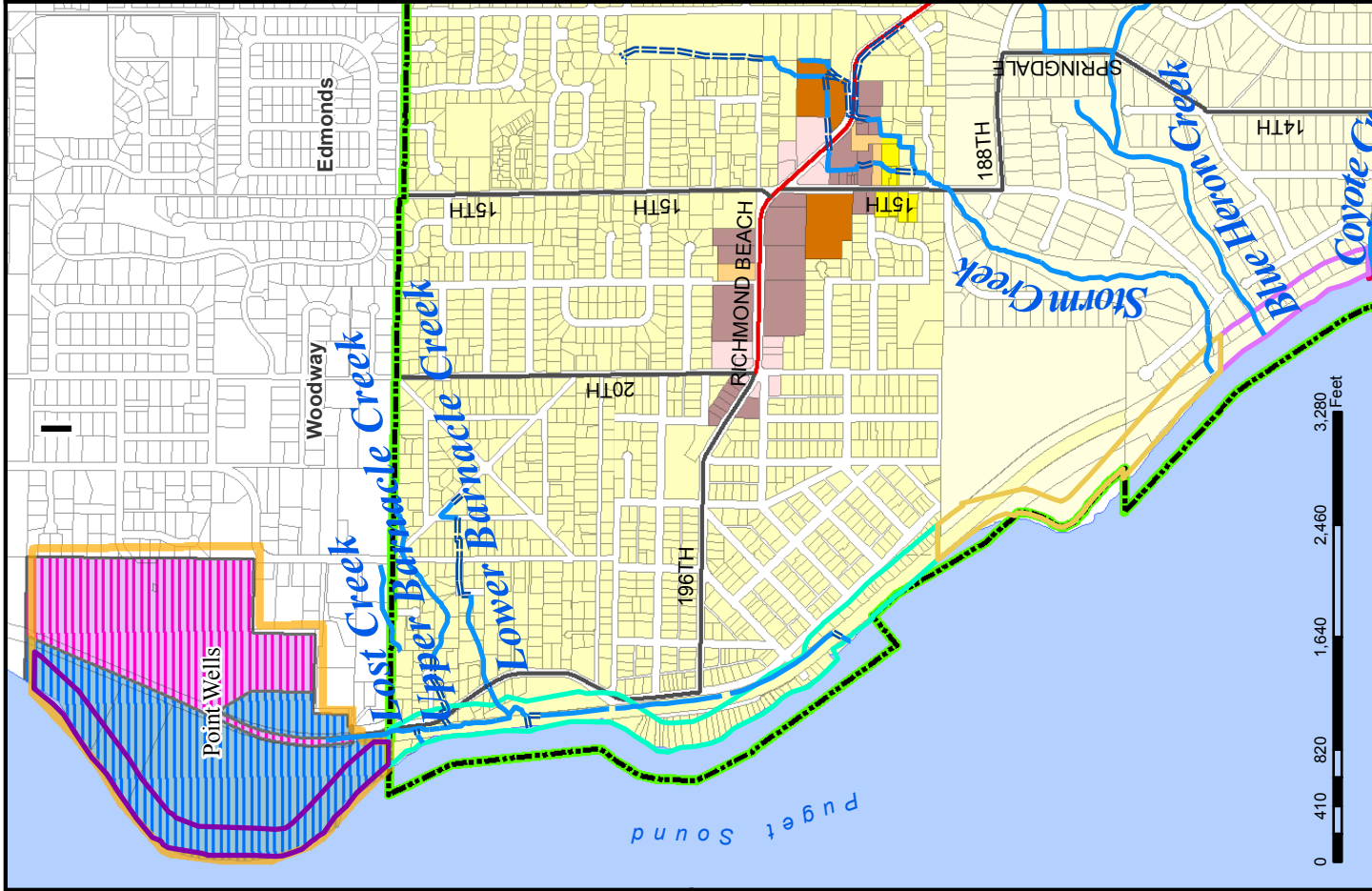
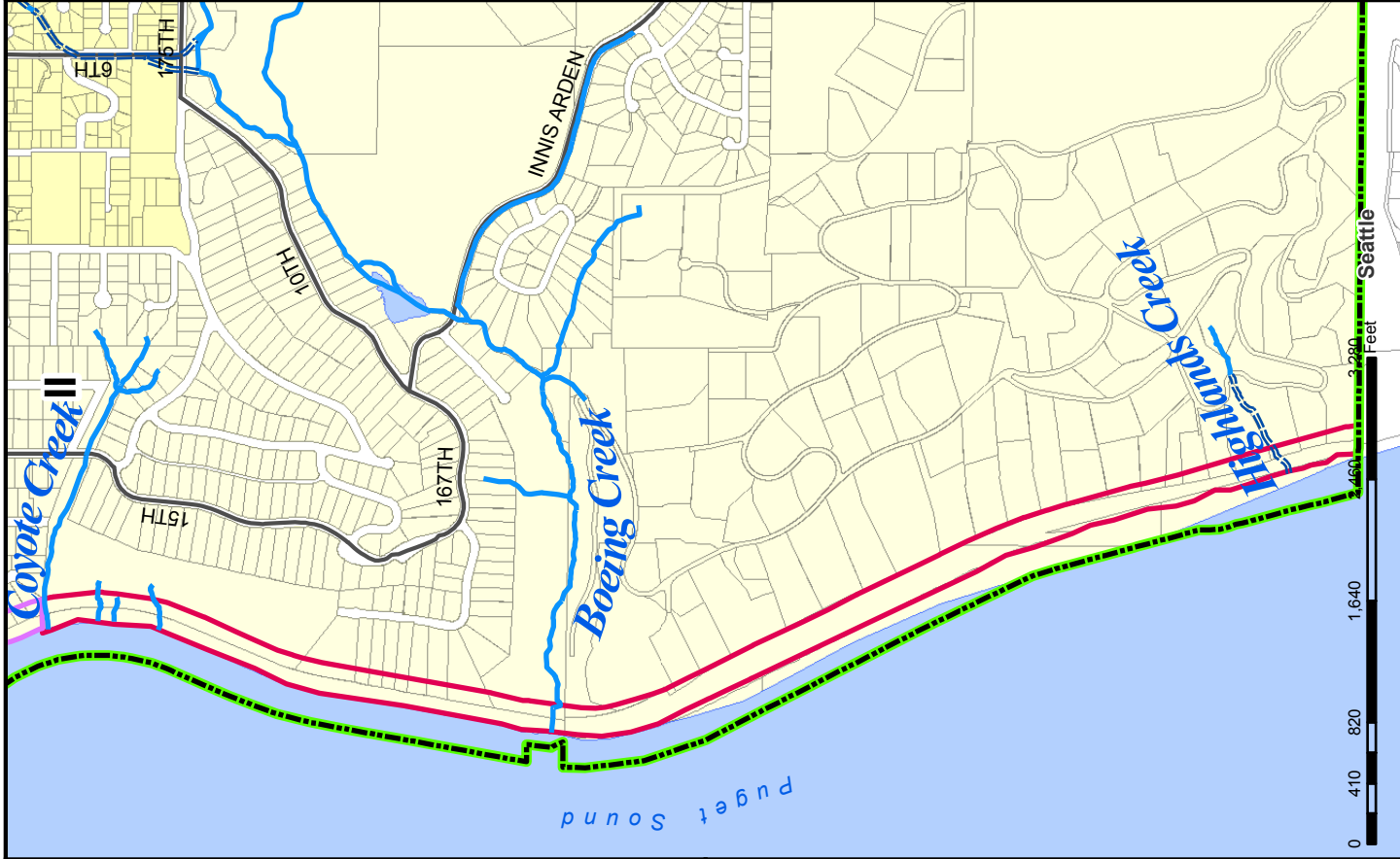
Data Source: City of Shoreline GIS & USGS
Projection: NAD 1983 HARN StatePlane, Washington, North FIPS 4601
Date Modified: 05/12/2008



Zoning Designations

Water Course

- TYPE**
- Open Water Course
 - Piped Water Course
 - R-4: Residential, 4 units/acre
 - R-6: Residential, 6 units/acre
 - R-8: Residential, 8 units/acre
 - R-12: Residential, 12 units/acre
 - R-18: Residential, 18 units/acre
 - R-24: Residential, 24 units/acre
 - R-48: Residential, 48 units/acre
 - O: Office
 - NB: Neighborhood Business
 - CB: Community Business
 - NCBD: North City Business District
 - RB: Regional Business
 - I: Industrial
 - CZ: Contract Zone
 - Snohomish County Zoning
 - HI: Heavy Industrial
 - R-9,600: Residential
 - Shoreline Planning Segments
 - Potential Annexation Area
 - City Limits
 - Collector Arterial
 - Minor Arterial
 - Open Water
 - Parcel Boundary



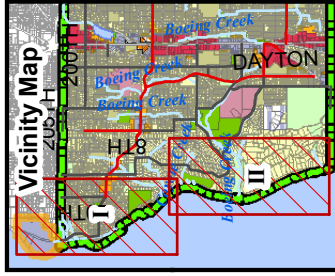
2008 City of Shoreline - SMP Update

Map 8

Zoning

Representation of Official Comprehensive Land Use Map Adopted By City Ordinance No. 292. Shows amendments through July 26, 2001.





**Comprehensive Plan:
Land Use Designation**

Water Course

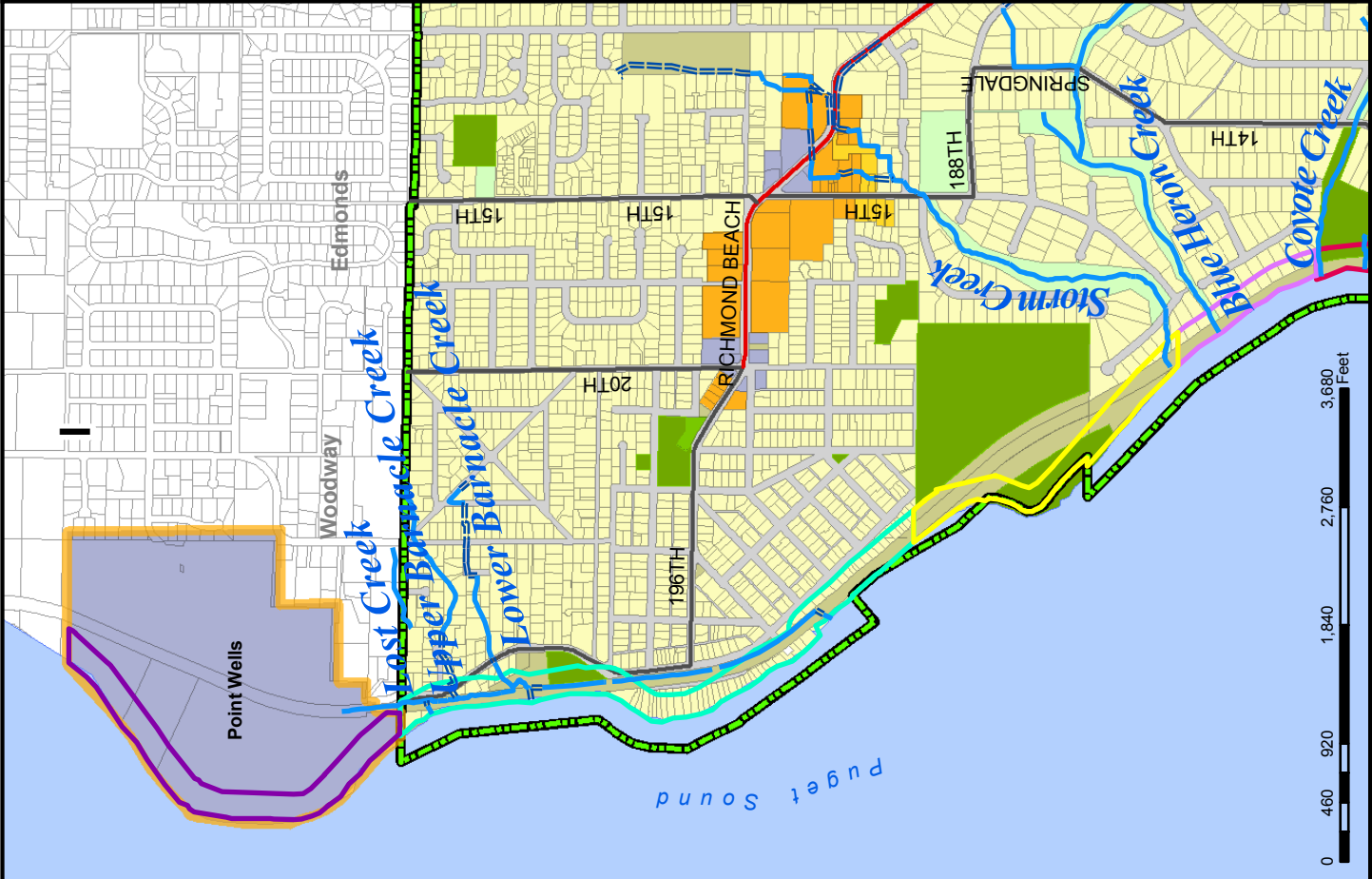
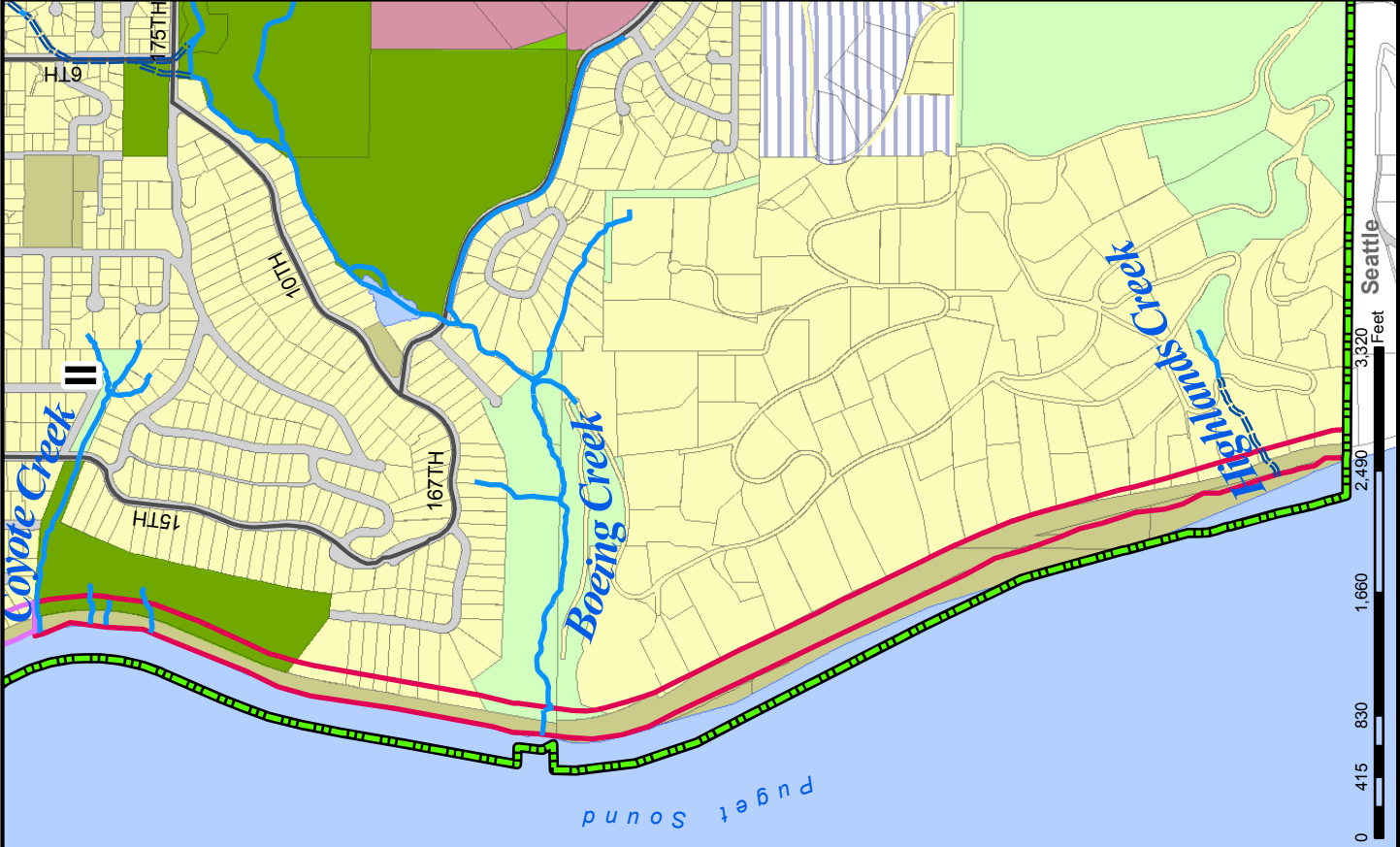
TYPE

- Open Water Course
- Piped Water Course
- Low Density Residential
- Medium Density Residential
- High Density Residential
- Mixed Use
- Community Business
- Regional Business
- Public Facilities
- Single Family Institution
- Special Study Area
- Bainbridge Special Study Area
- Braemar Special Study Area
- North City Business District
- Paramount Special Study Area
- Private Open Space
- Public Open Space

Shoreline Planning Segments

- A
- B
- C
- D
- E
- Collector Arterial
- Minor Arterial
- City Limits
- Open Water
- Parcel Boundary
- Potential Annex Area

No warranty of any sort, including accuracy, fitness, or merchantability, accompany this product.



2008 City of Shoreline - SMP Update
Map 9 a

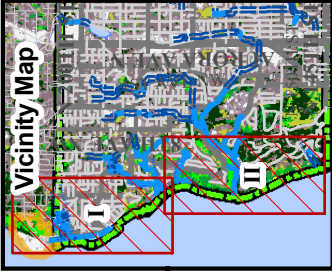
Representation of Official
Comprehensive Land Use
Map Adopted BY
City Ordinance No. 292.
Shows amendments through
July 26, 2001.

Comprehensive Plan and Shoreline Environment Designations

Data Source: City of Shoreline, GIS
Shoreline, Shoreline
Washington, North, FIPS: 4601
Date Modified: 05/12/2008

SHORELINE

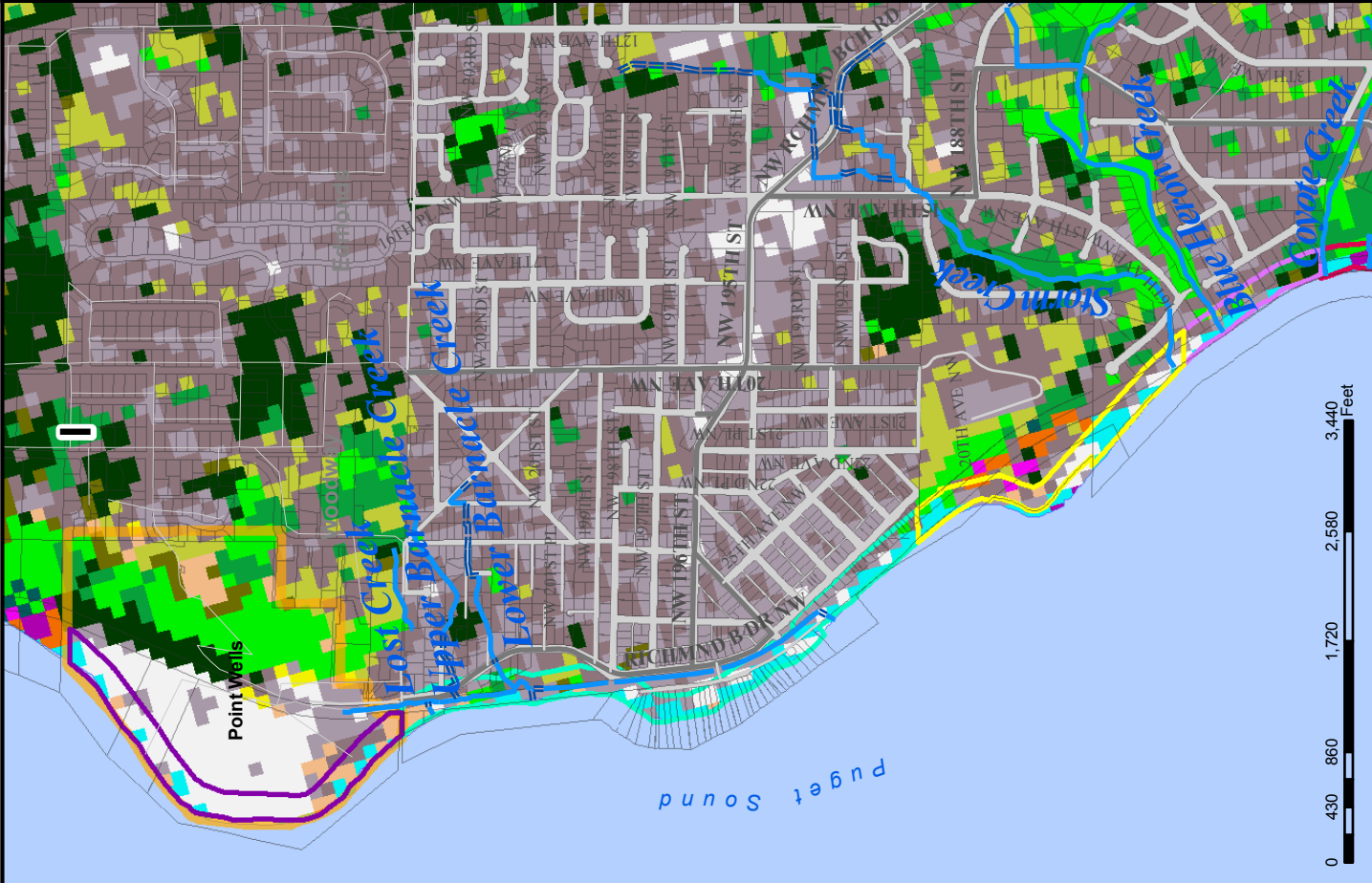
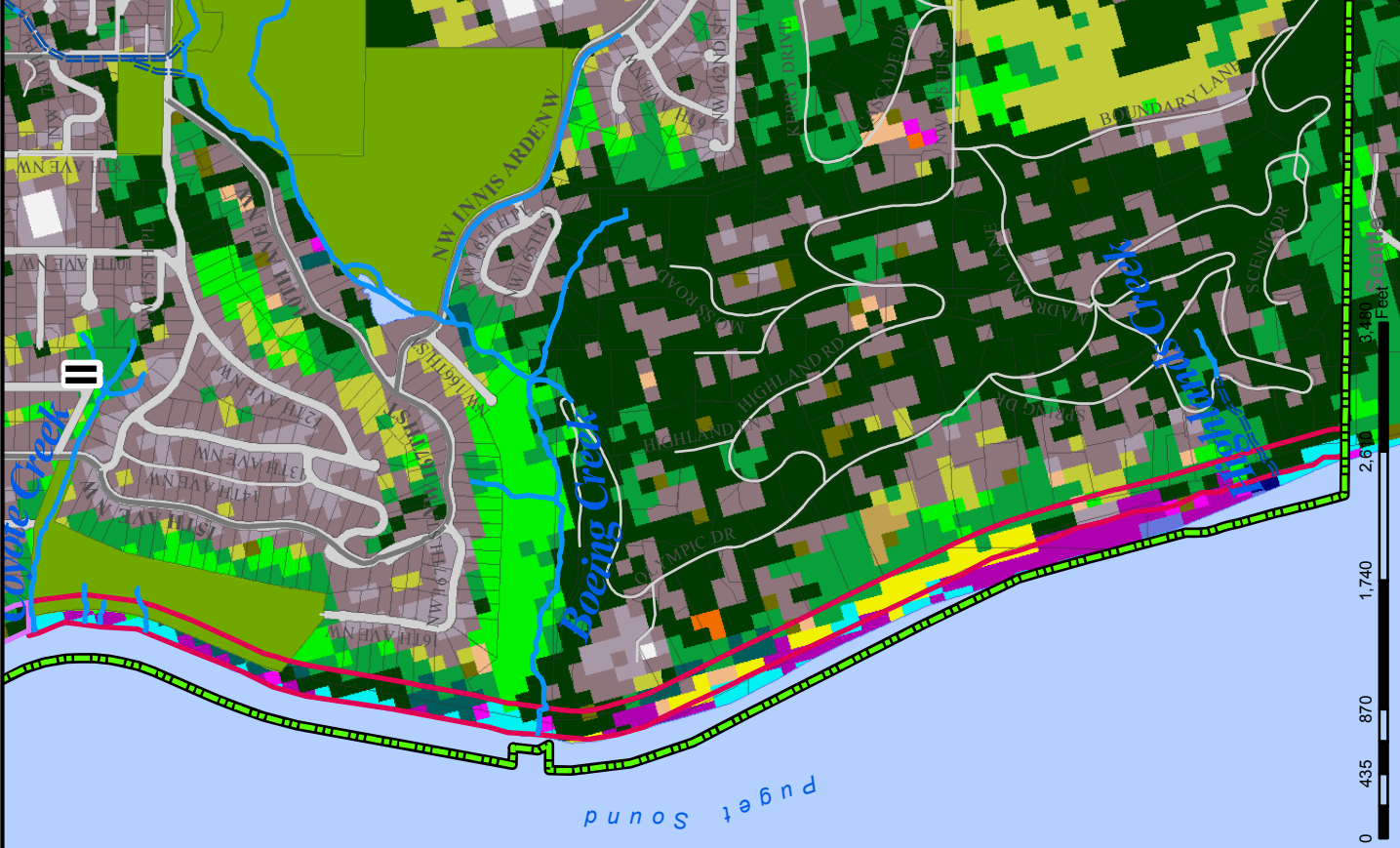
Geographic Information System



- Unclassified
 - High Intensity Developed
 - Medium Intensity Developed
 - Low Intensity Developed
 - Developed Open Space
 - Cultivated
 - Pasture/Hay
 - Grassland
 - Deciduous Forest
 - Evergreen Forest
 - Mixed Forest
 - Scrub/Shrub
 - Palustrine Forested Wetland
 - Palustrine Scrub/Shrub Wetland
 - Palustrine Emergent Wetland
 - Estuarine Forested Wetland
 - Estuarine Scrub/Shrub Wetland
 - Estuarine Emergent Wetland
 - Unconsolidated Shore
 - Bare Land
 - Water
 - Palustrine Aquatic Bed
 - Estuarine Aquatic Bed
 - Tundra
 - Snow/Ice
- Shoreline Planning Segments**
- Water Course**
- TYPE**
- Open Water Course
 - Piped Water Course
 - A
 - B
 - C
 - D
 - E
- City Limits
Open Water



Representation of Official Comprehensive Land Use Map Adopted By City Ordinance No. 292. Shows amendments through July 26, 2001.



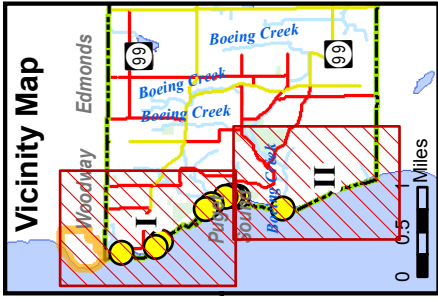
2008 City of Shoreline - SMP Update
Map 9 b

Land Cover and Shoreline Designations

Data Source: City of Shoreline GIS
Projection: NAD 83, UTM, Zone 18N, Spheroid: Everest
Date Modified: 05/12/2008

No warranties of any sort, express or implied, are made by the City of Shoreline, or its contractors, for the accuracy, completeness, or merchantability, of any product.





Water Course

TYPE
 Piped, Unconfirmed
 Open Water Course
 Piped Water Course
 Stream Culvert

Streets

Collector Arterial
 Minor Arterial

Shoreline Planning Segments

A
 B
 C
 D
 E

Sewer Structure

TYPE
 Outfall
 Overflow
 Tax Parcel
 Sewer
 Sewer Main
 Overflow Outfalls
 Sewer Lift Station

Local Street

City Limits

Potential Annexation Area

Open Water

Local Street

City Limits

Potential Annexation Area

Open Water

Local Street

City Limits

Potential Annexation Area

Open Water

Local Street

City Limits

Potential Annexation Area

Open Water

Local Street

City Limits

Potential Annexation Area

Open Water

Local Street

City Limits

Potential Annexation Area

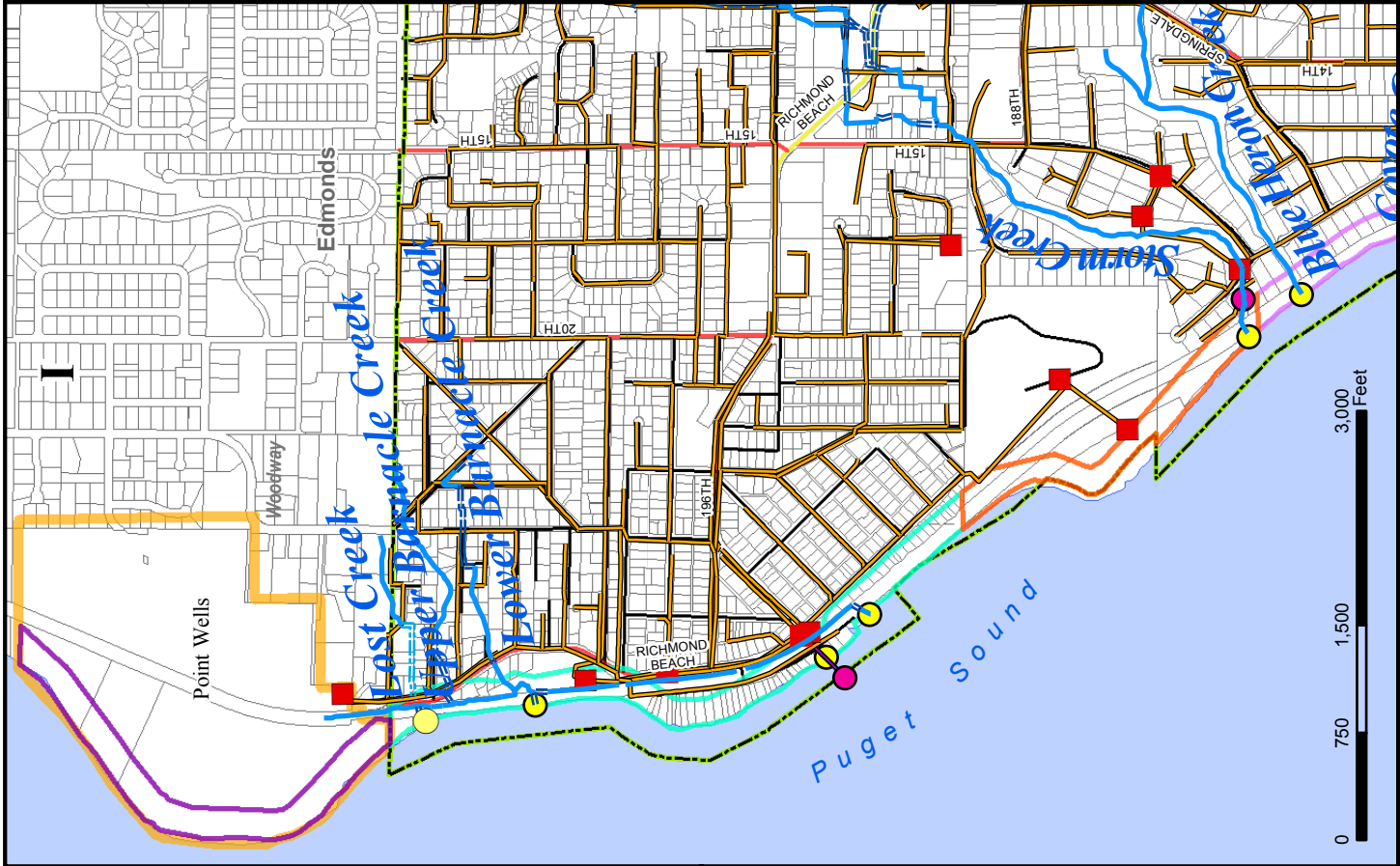
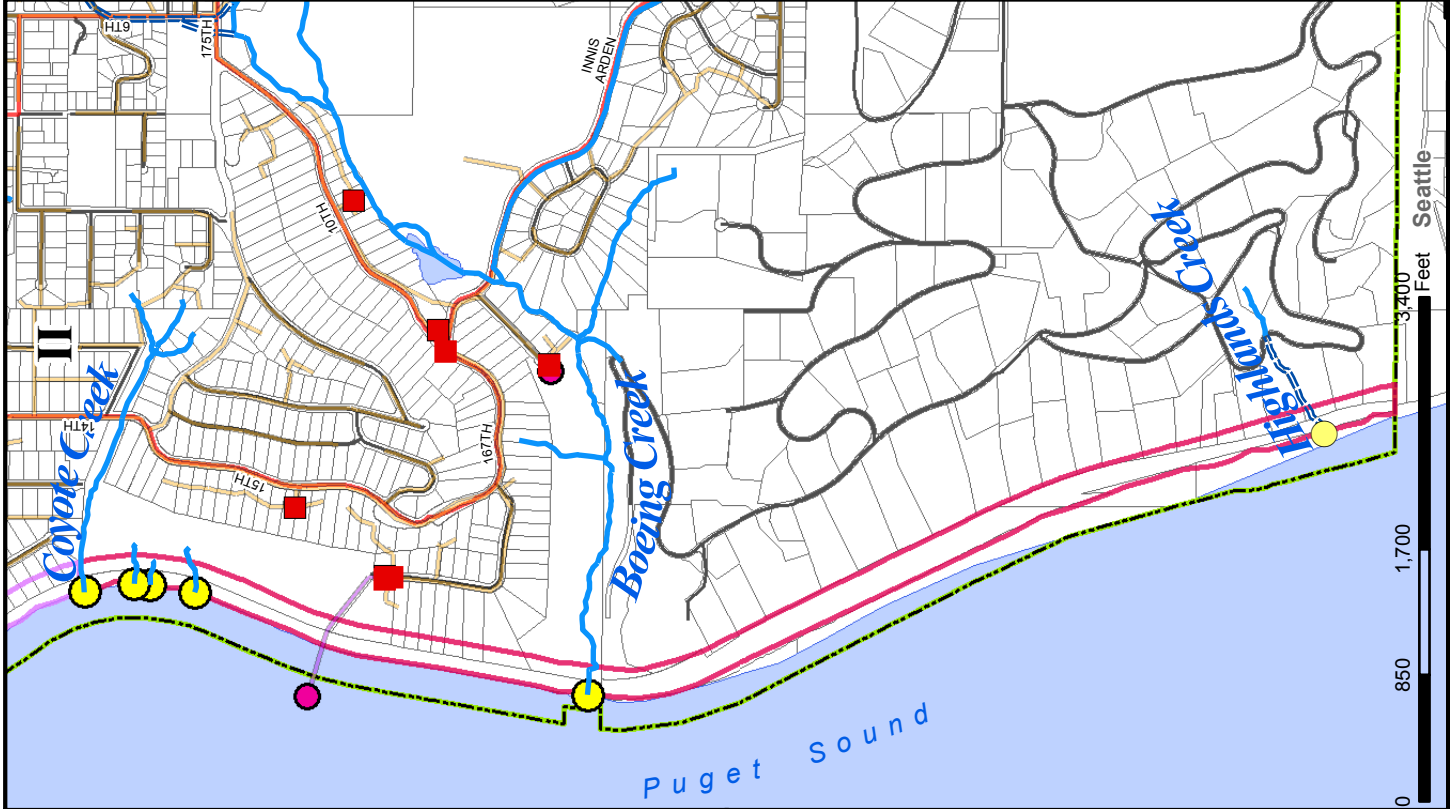
Open Water

Local Street

City Limits



Data Source: City of Shoreline GIS
 Projection: NAD_1983_HARN_StatePlane_Washington_North_FIPS_4601
 Date Modified: 05/12/2008



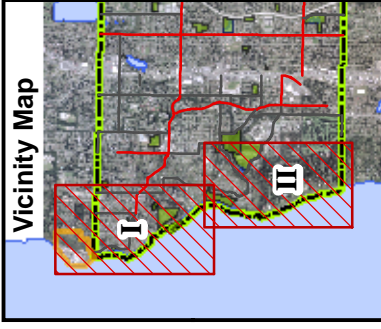
2008 City of Shoreline - SMP Update
 Map 10

Transportation/Utilities

No warranties of any sort, including accuracy, fitness, or merchantability, accompany this product.

SHORELINE

Geographic Information System



Parks, Open Space, and Public Access

Shoreline Facility Type

- Fire Station
- General
- Library

Parcel Based Land Use (2001)

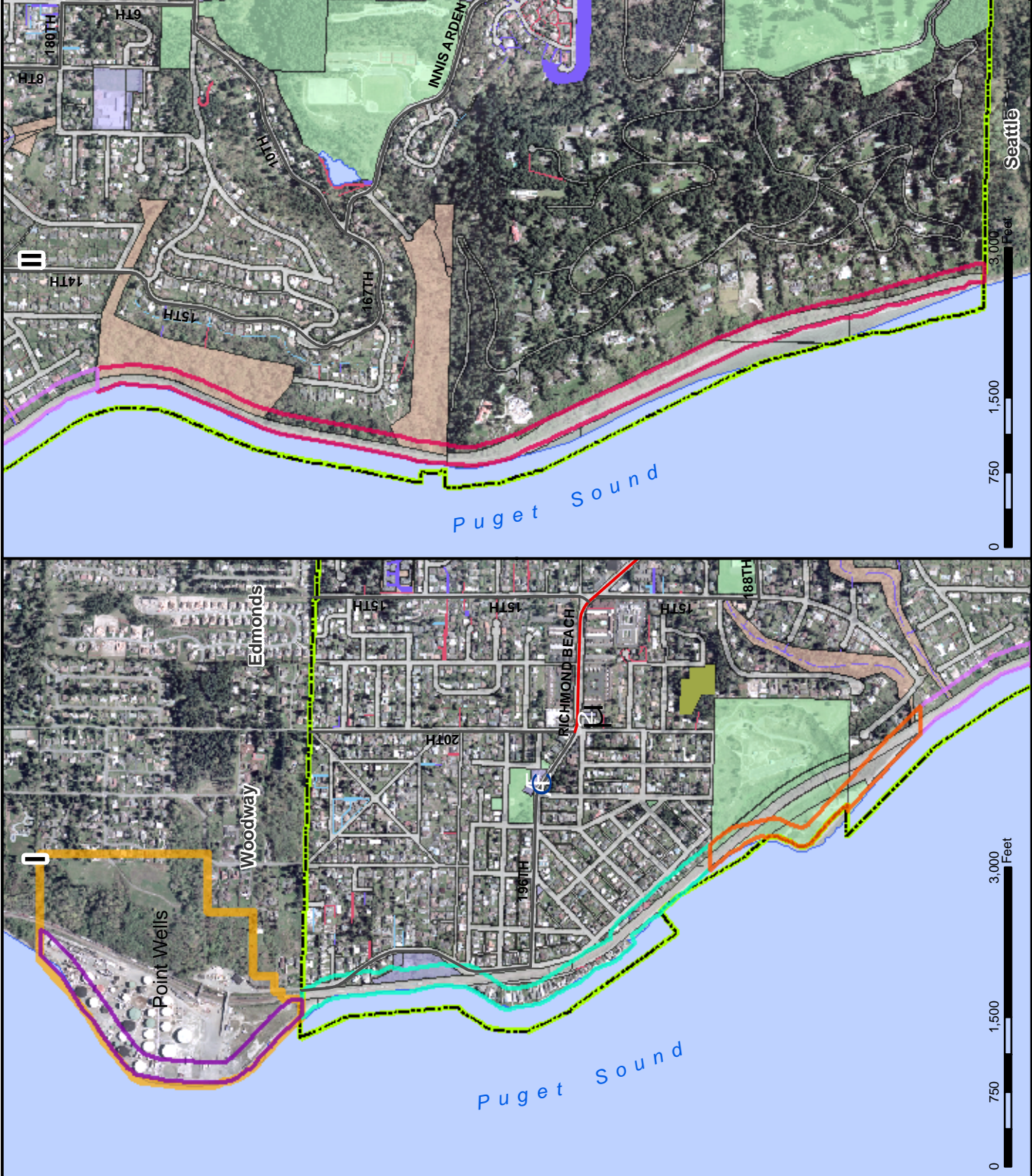
- Open Space
- Public Facility
- Recreation/Parks
- Transportation

Encumbrance Type

- Conservation Easement
- Drainage Easement
- Ingress-Egress
- Utility Easement

Shoreline Planning Segments

- A
- B
- C
- D
- E
- Collector Arterial
- Minor Arterial
- Potential Annexation Area
- City Limit
- Open Water



2008 City of Shoreline - SMP Update
Map 11

Parks, Open Space, and Public Access

Data Source: City of Shoreline GIS
Projection: NAD_1983_HARN_StatePlane_Washington_North_FIPS_4601
Date Modified: 05/12/2008

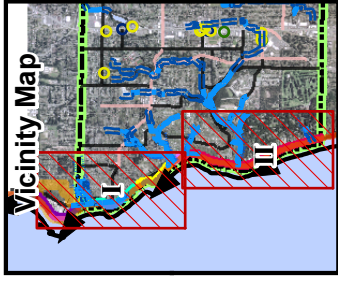


No warranties of any sort, including accuracy, fitness, or merchantability, accompany this product.



SHORELINE

Geographic Information System



Nearshore Processes & Shoreline Modifications

Water Course

- TYPE**
- Open Water Course
 - Piped Water Course
 - ▲ Drift Cell
 - Railroad

Shoreline Modifications

- Modification Type**
- N/A
 - CONCRETE BULKHEAD
 - RIP RAP
 - SHEET PILE

Shoreline Jurisdictions

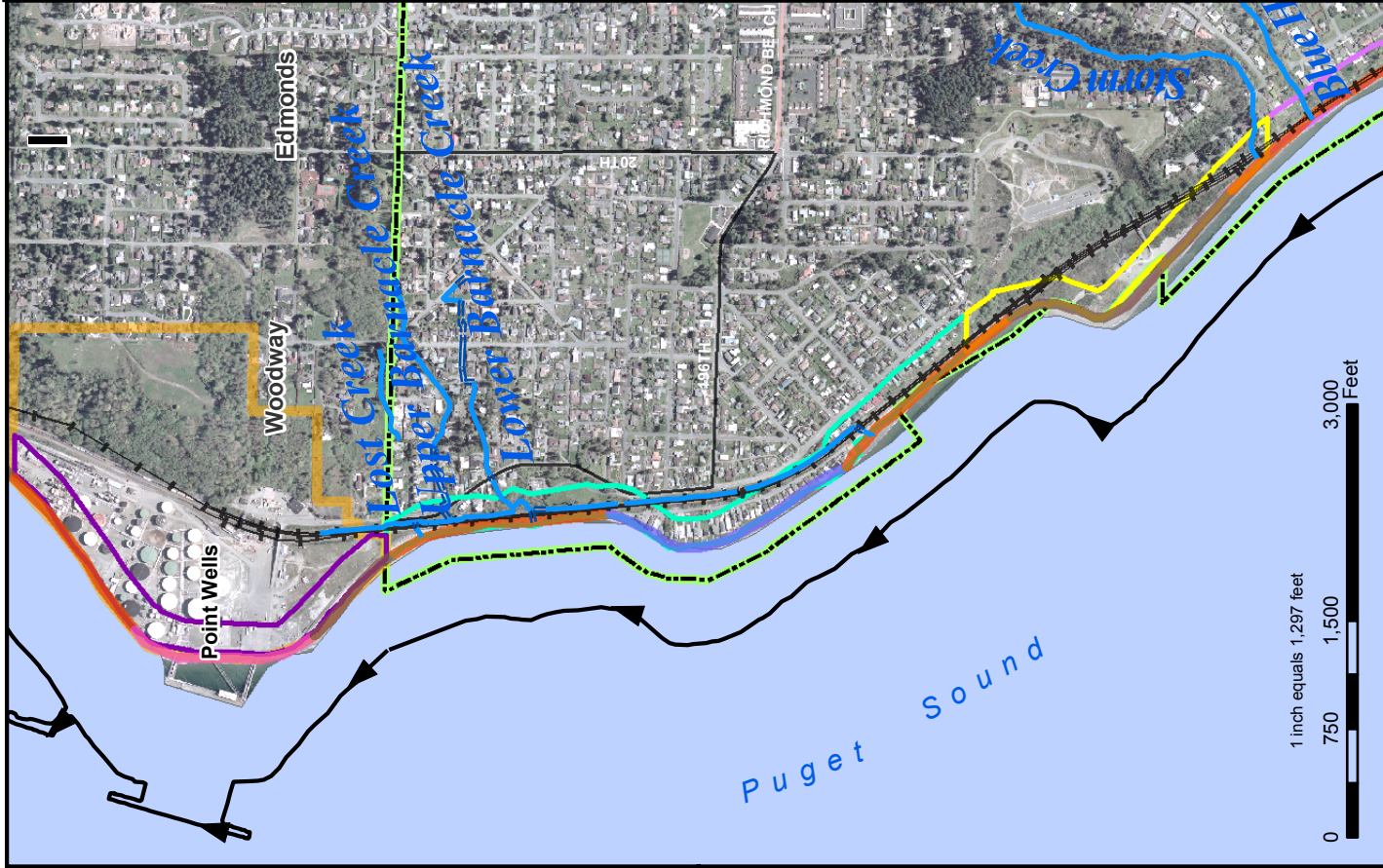
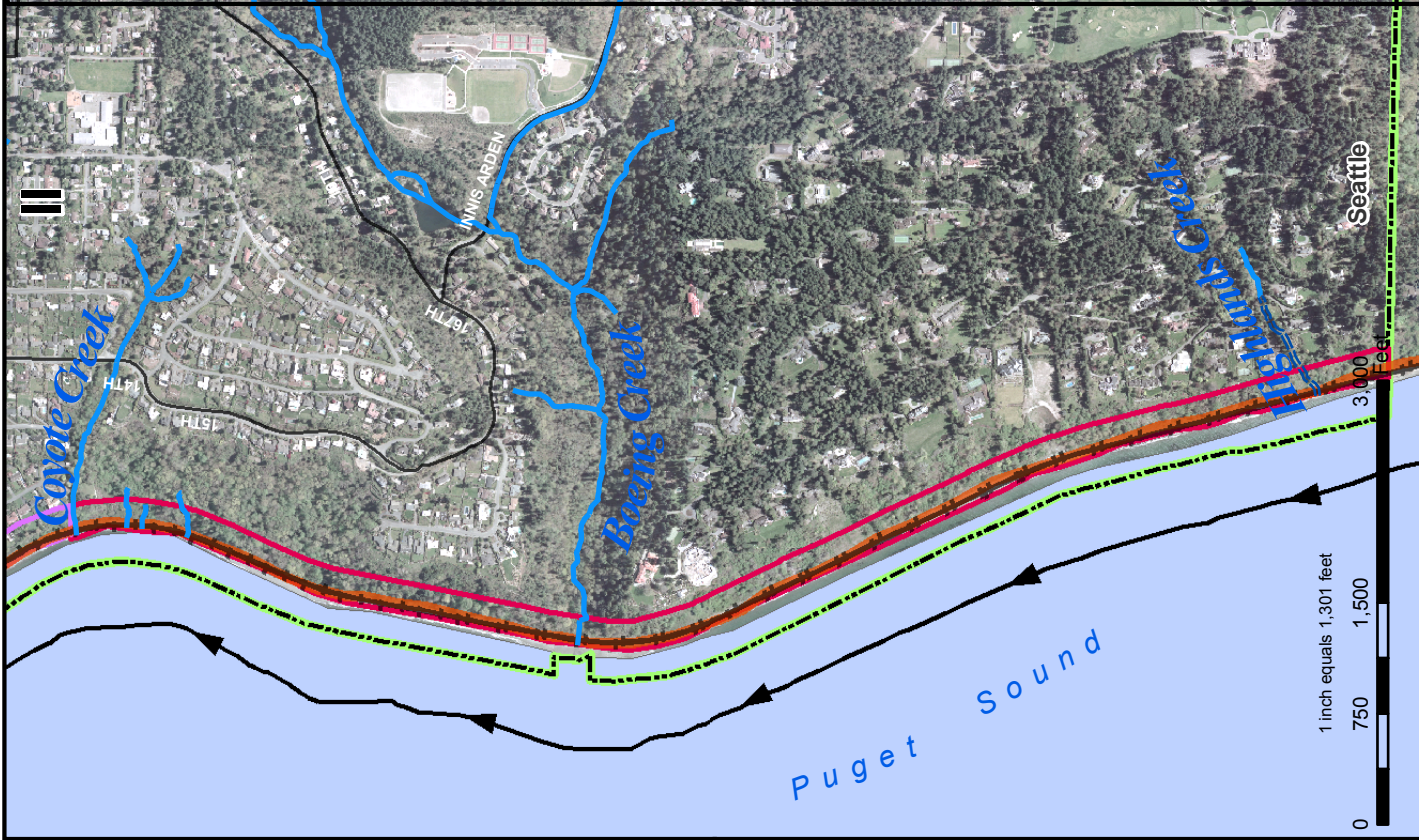
- A
- B
- C
- D
- E
- Potential Annexation Area

Streets

- Collector Arterial
- Minor Arterial
- City Boundary
- Open Water



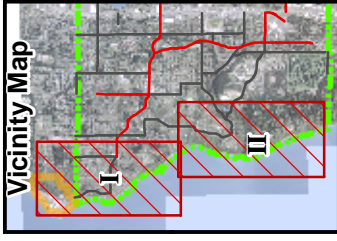
No warranties of any sort, including accuracy, fitness, or merchantability, accompany this product.



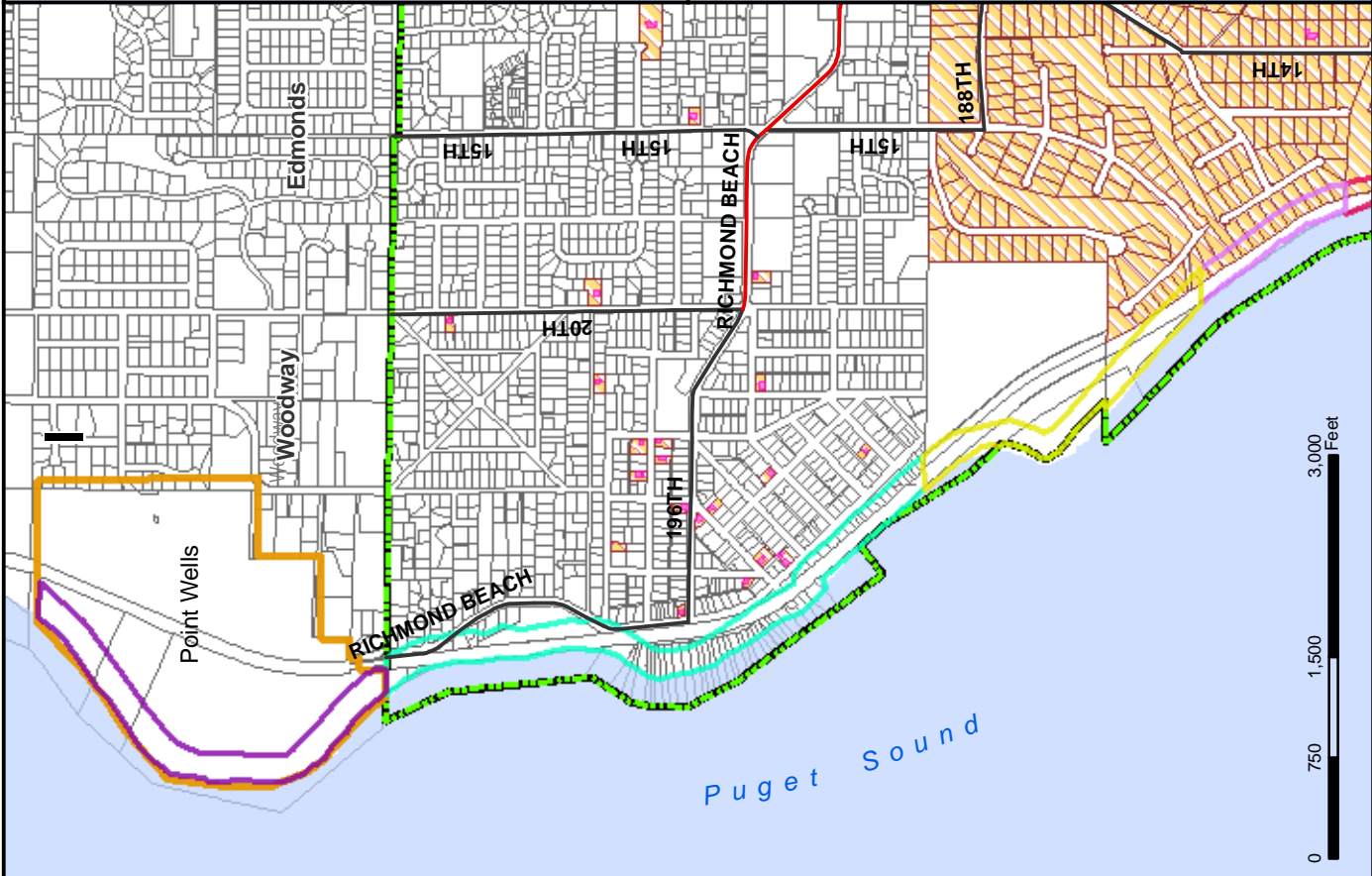
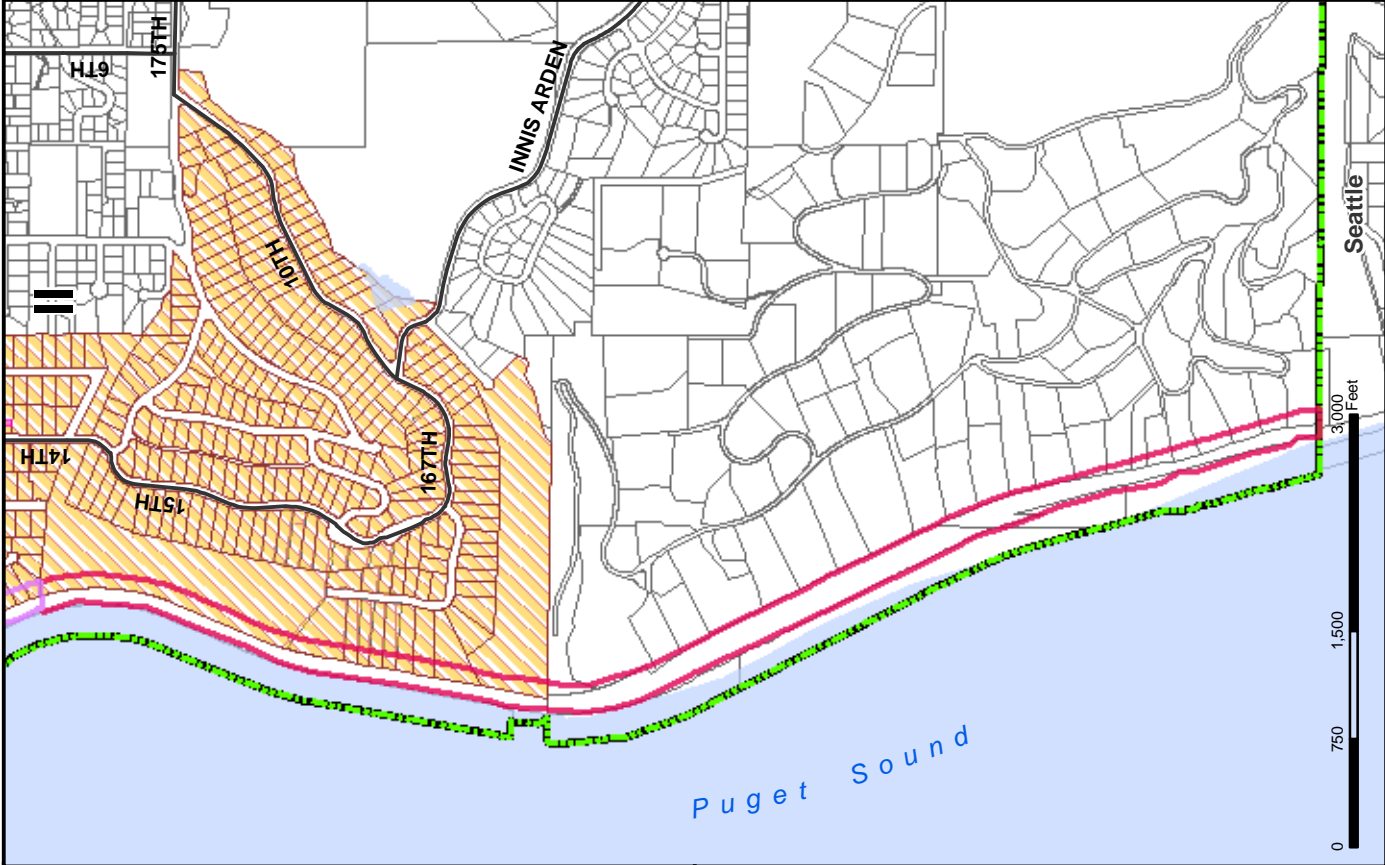
2008 City of Shoreline - SMP Update
Map 12

Nearshore Processes and Shoreline Modifications

Data Source: WA State Department of Natural Resources (Modifications) & Schwarz, 1991
Projection: NAD 1983 HARN StatePlane - Washington North FIPS 4601
Date Modified: 05/12/2008



- Historic Sites and Structures**
- Historic Structures (1999)
 - Historic Parcels
- Shoreline Planning Segments**
- A
 - B
 - C
 - D
 - E
- Collector Arterial
 - Minor Arterial
 - Point Wells
 - City Limits
 - Open Water
 - TaxParcel

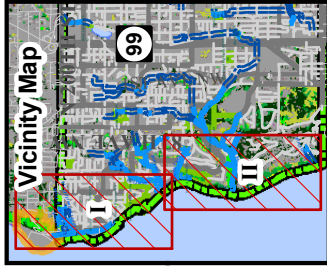


2008 City of Shoreline - SMP Update
Map 13

Known Archaeological and Historic Sites

Data Source: City of Shoreline GIS
Projection: NAD 1983 UTM Zone 18N
Washington, North FIPS 4601
Date Modified: 05/12/2008





Impervious Surface

Water Course

TYPE

Open Water Course

Piped Water Course

Park

Tax Parcel Boundary

Unclassified Right of Way

Shoreline Planning Segments

A

B

C

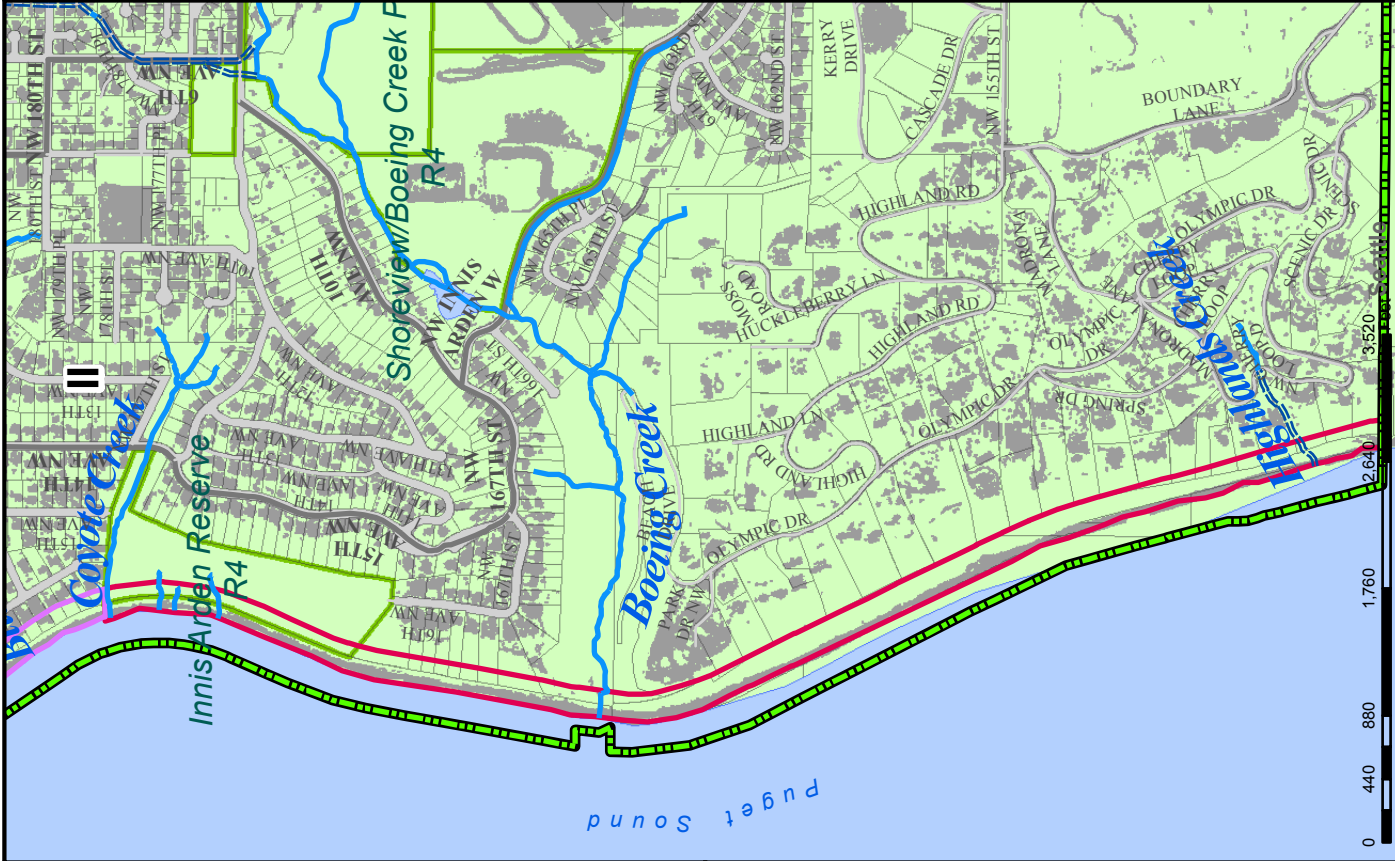
D

E

Potential Annex Area

Open Water

No warranties of any sort, including accuracy, reliability, or timeliness, accompany this product.



2008 City of Shoreline - SMP Update

Map 14

Impervious Surface

Representation of Official Comprehensive Land Use Map Adopted By City Ordinance No. 292. Shows amendments through July 26, 2001.