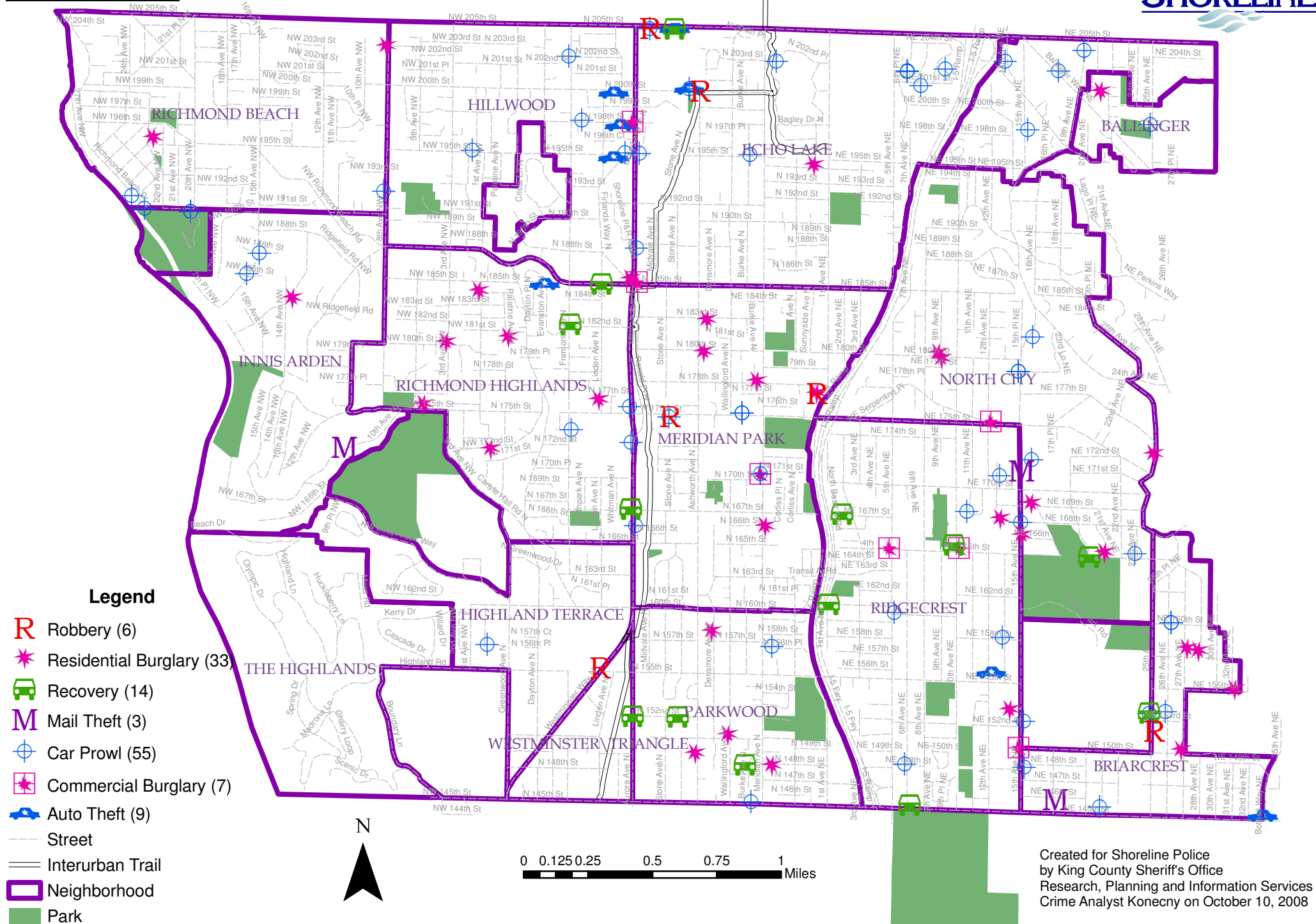


# Selected Incidents September 2008



**Legend**

- Robbery (6)
- Residential Burglary (33)
- Recovery (14)
- Mail Theft (3)
- Car Prowl (55)
- Commercial Burglary (7)
- Auto Theft (9)
- Street
- Interurban Trail
- Neighborhood
- Park

Created for Shoreline Police  
by King County Sheriff's Office  
Research, Planning and Information Services  
Crime Analyst Konecny on October 10, 2008