

PEDESTRIAN BRIDGE

PROPOSED CROSSING LOCATION



Looking west (downstream)

PROPOSED SUSPENSION BRIDGE



Looking west (downstream)

EXISTING CONDITIONS

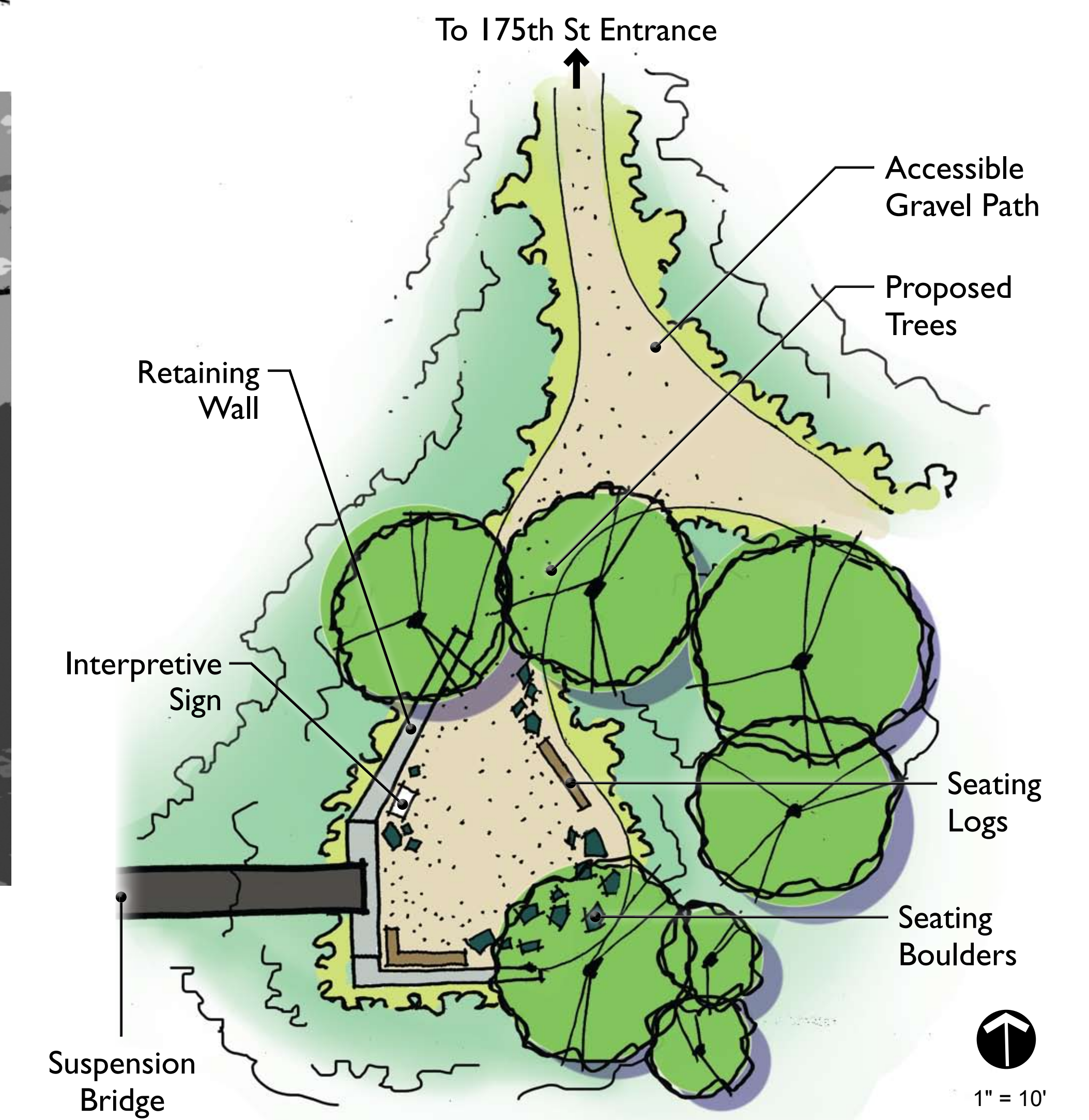


Recommended bridge approach location from north side, looking south



"Pallet crossing" with sandy slope beyond, looking west

BRIDGE APPROACH - NORTH SIDE GATHERING AREA



BOEING CREEK PARK IMPROVEMENTS - COMMUNITY MEETING

AUGUST 9, 2007
30206



1218 Third Avenue, Suite 300, Seattle, Washington 98101 Phone (206) 224-7221 Fax (206) 224-9230 www.otak.com

