

DRAFT

City of Shoreline

Briarcrest Neighborhood Traffic Action Plan

October 2, 2006



TABLE OF CONTENTS

Introduction	3
Briarcrest neighborhood boundary, Figure 1	4
The Planning Process	5
Neighborhood Traffic Action Plan Development Flowchart	7
Neighborhood Traffic Issues	8
Issues, by Street	8
Traffic-related Issues Summary	10
Pedestrian-related Issues Summary	11
Citizen Comment Locations Map	13
Neighborhood Recommendations	14
Recommendations, by Street	14
Traffic Recommendation Summary	22
Pedestrian Recommendation Summary	23
Neighborhood Plan Recommendations Map	24
Prioritized Project Recommendations, Traffic Projects	25
Prioritized Project Recommendations, Pedestrian Projects	26
Implementation	27
Appendix	28
Neighborhood Identified Concerns Table	29
25 th Ave NE and NE 168 th St intersection diagram	45
Existing and Historic Traffic Safety Conditions Map	46
General Comments from June 16, 2006 Open House Survey	47

INTRODUCTION

The Briarcrest Neighborhood Traffic Action Plan is a cooperative effort between City staff and residents to develop a list of projects to improve safety, mobility and livability of the neighborhood. The process to develop the plan was designed to give residents an opportunity to actively work with the City to identify key transportation issues, evaluate potential solutions and develop a list of prioritized recommendations which could be used to guide both short and long term improvements to the neighborhood.

This planning effort was initiated by Shoreline City Council who recognized that neighborhood traffic issues are a primary concern for many residents. Understanding the impact that traffic can have on neighborhoods, the council directed Shoreline's Public Works Department to work with each of the City's 13 neighborhoods to develop a plan that would address neighborhood transportation issues specific to each community. The recommendations in the plan would then be used to guide future pedestrian and traffic improvements and could help identify potential mitigation measures for larger projects being planned in the city.

Briarcrest was the third neighborhood selected to work with the City to develop Neighborhood Traffic Action Plans. This neighborhood along with North City and Ridgecrest was experiencing traffic impacts from two major projects in the area, the reconfiguration of 15th Avenue NE between NE 150th Street and 175th Street from four lanes to three and the North City Project.

The Briarcrest neighborhood is roughly bounded on the north by NE150th St from 15th Ave NE to 25th Ave NE and NE 168th St from 25th Ave NE to the eastern city limits; on the east by the Shoreline city limits; on the south by NE 145th St; and on the west by 15th Ave NE. Within the study area are Shorecrest High School, Kellogg Middle School, and Briarcrest Elementary School. In addition, Fircrest and Hamlin Park are directly adjacent to the neighborhood. The study area is shown in Figure 1.

The planning process commenced in the Fall of 2005 and was completed in Spring of 2006. The City held two community meetings, inviting residents to come and identify specific issues or concerns they had regarding pedestrian and traffic safety issues. Residents used survey cards provided at the meetings to submit their input and concerns. The City also included concerns previously identified by the community through the City's Neighborhood Traffic Safety Program.

A Neighborhood Traffic Advisory Committee of volunteer residents from the neighborhood was created to work with the City to develop the plan. The City met several times with the Neighborhood Traffic Advisory Committee, Police and Fire department representatives and school district representatives to develop and prioritize recommendations. The preliminary recommendations were presented to the larger community at an Open House where final input was received.

The City has already completed some of the recommendations in the plan, and additional recommendations are scheduled for completion in 2006. Recommendations will be implemented on an on-going basis, as funding sources are identified. The Neighborhood Action Plan is considered to be an active working plan, and the City recognizes that new issues and concerns will arise in the future. As a result, it is recommended that the plan be revisited periodically to update and revise recommendations as needed.

The following chapters of the plan include *Planning Process* which describes the process and timeline for developing the plan, *Neighborhood Traffic Issues* which identifies traffic issues by street and summarizes key traffic, pedestrian and bicycle issues, *Neighborhood Recommendations* which describe the specific recommendations by street and summarizes key traffic bicycle and pedestrian elements, and *Implementation* which identifies potential opportunities for funding projects identified in the plan. Additional supporting documentation may be found in the attached *Appendix*.

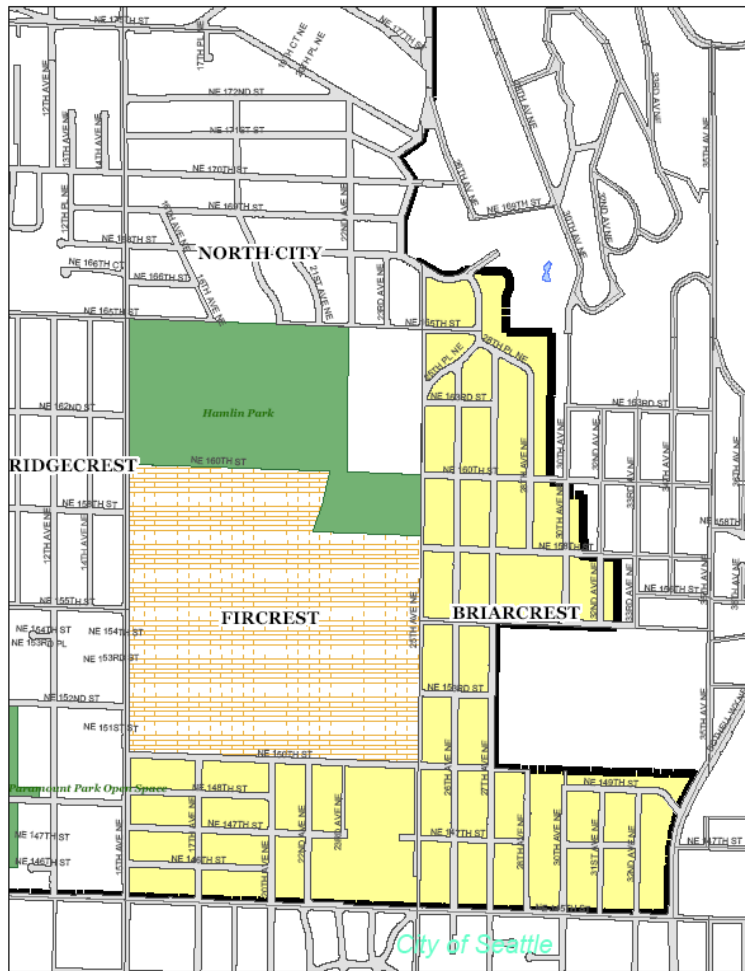


Figure 1: Briarcrest Neighborhood Planning Boundary

THE PLANNING PROCESS

The planning effort began with community meeting in September 2005. City staff spoke with the Briarcrest Neighborhood Association and residents providing information about the effort to create a Neighborhood Traffic Action Plan for Briarcrest. Residents were asked to fill out survey cards to identify concerns they had regarding neighborhood traffic, pedestrian or bicycle safety.

Each issue was given an identification number and entered into an *Issues* matrix which would enable staff to track each response and future follow-up actions. City staff investigated the concerns that were identified. Solutions that required no additional community coordination were implemented, such as trimming vegetation or installing parking restrictions for improved visibility and safety.

On February 16th, 2006 second meetings was held to report back to the community on initial actions taken since the first meeting, and provide residents with an opportunity to identify additional issues they would like included in the planning effort. At this meeting, the City asked for volunteers to serve on a Neighborhood Traffic Advisory Committee to work with City staff to evaluate issues and develop recommendations for the plan.

The newly-formed Neighborhood Traffic Advisory Committee included 8 residents who participated in the development of the plan.

Steering Committee Volunteers		
Dianna Herbst	Dennis Lee	Jim Noyes
Rebecca Olsen	Susan Piper Sack	Darryl Tapp
Lynn Tapp	Stan Terry	

Through a series of five meetings in May of 2006, City staff and the Advisory committee met to discuss key transportation issues, evaluate options and develop specific recommendations. At the first meeting, City staff discussed the role and responsibilities of the Neighborhood Traffic Advisory Committee, provided members with copies of the issues identified by the community, and information on commonly used tools and techniques for addressing various types of neighborhood traffic issues. City staff discussed the importance of looking at a variety of approaches when developing solutions, in particular focusing on the three E's of problem solving: Engineering, Education, and Enforcement.

At the following meetings, City staff and the committee reviewed the various issues identified by residents, and discussed potential causes and solutions in the context of the broader community. Representatives from the Shoreline Police Department and Fire Department were at the meetings to answer questions and provide additional input.

Input on traffic issues relating to the three public schools in the area, Briarcrest Elementary School, Kellogg Middle School, and Shorecrest was received from the principals of each

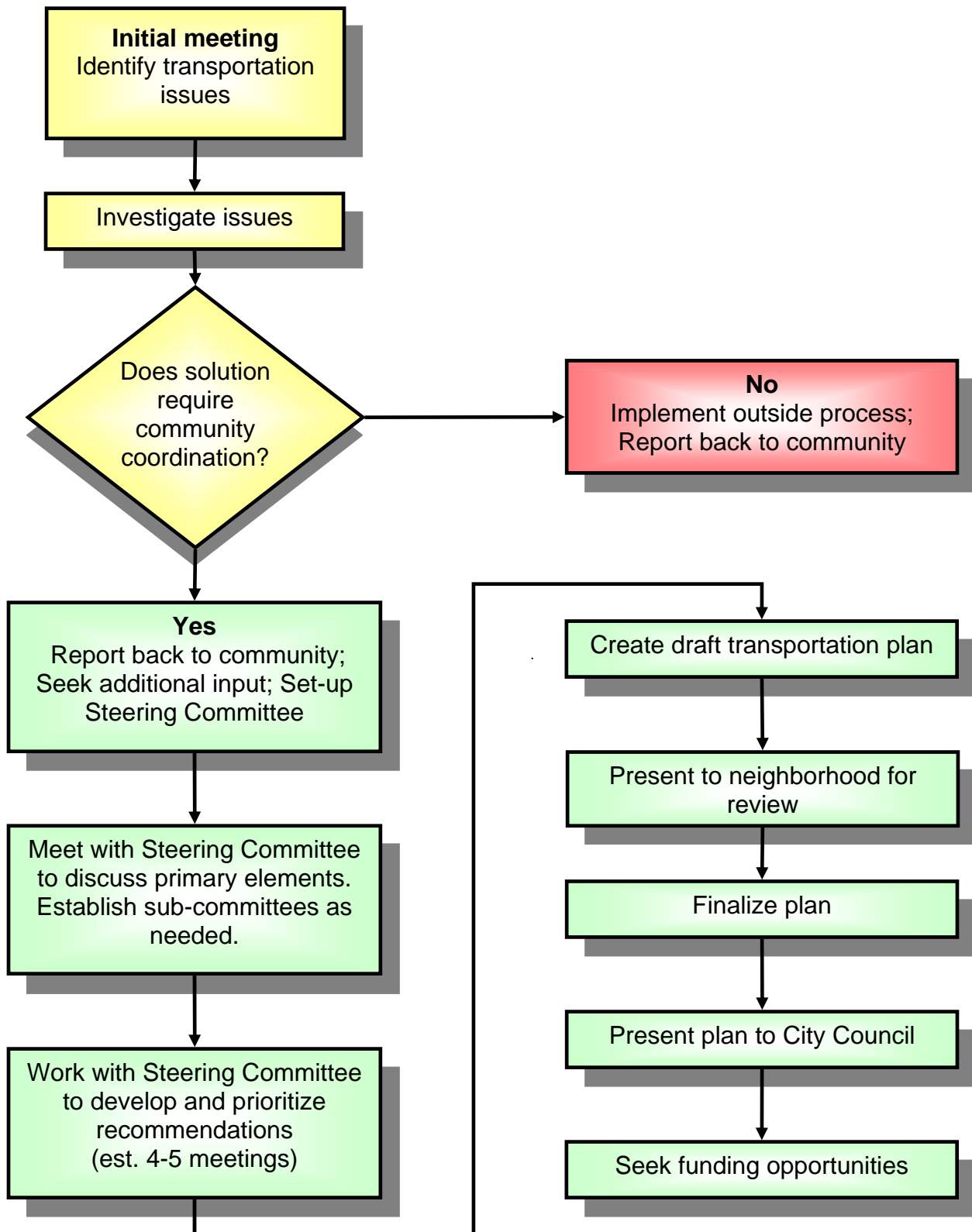
school. After the committee had developed recommendations for the plan, members ranked each identified project as a high, medium, or low priority for the neighborhood.

On June 16th, 2006, a community open house was held at the Briarcrest Elementary School to present the proposed Neighborhood Plan recommendations and solicit input from the broader community. City staff and advisory committee members were available to answer questions and explain the planning process. Attendees were asked to fill out a questionnaire to determine the level of community support for the recommendations developed in the plan. Results of the surveys showed that over 75% of those that filled out the survey indicated they supported the plan.

June 16th, 2006 Open House Survey Results	
Attendees	30+
Surveys completed/returned	17
“Strongly supported”	3
“Somewhat supported”	10
“No opinion”	3
“Somewhat opposed”	1
“Strongly opposed”	0

Based on input received from the open house, minor changes and additional recommendations were incorporated into the plan. This document represents a draft of the final Neighborhood Action Plan for Ridgecrest. The plan will be presented to the City Council for approval.

NEIGHBORHOOD TRAFFIC ACTION PLAN DEVELOPMENT



BRIARCREST NEIGHBORHOOD TRAFFIC ISSUES

Briarcrest residents filled out survey cards available at community meetings to identify concerns that they had regarding neighborhood traffic issues, along with pedestrian and bicycle safety issues. In addition, City Staff included historical concerns identified by residents through the city's Neighborhood Traffic Safety Program which works with residents to address neighborhood traffic safety concerns. The following section presents the issues, listed by street, identified by residents.

15th Avenue NE (NE 145th St to NE 155th St)

- Difficult for pedestrians to cross at NE 150th St
- Lack of sidewalk on east side from NE 150th St to NE 155th St

17th Ave NE (NE 145th St to NE 150th St)

- Speeding
- Cut-through traffic

20th Ave NE (NE 145th St to NE 150th St)

- Speeding

25th Avenue NE (NE 145th St to NE 168th St)

- Three lane configuration on 15th Ave NE causing increase in traffic on 25th.
- Speeding
- Lack of sidewalk on east side of 25th Ave NE from NE 150th to NE 168th St.
- Maintain parking on east side of 25th Ave NE from NE 150th to NE 168th St
- Request all-way stop at 25th and NE 150th to reduce collisions and slow traffic.
- Cars parked on east side of 25th Ave NE and overgrown vegetation block pedestrian access.
- Cars parked on 25th Ave NE near intersections impacting visibility.
- Northbound cars passing on right side. Pedestrian safety concern.
- Parents parked in bike lane on west side in front of school waiting to pick up kids.
- School parking for student pick-up or special events.
- Cars traveling on west shoulder where peds may be walking, on 25th Ave NE at NE 168th St.
- Request all-way stop at NE 168th to reduce risk of collision.
- Existing bike lanes not utilized.

26th Avenue NE (NE 145th St to NE 160th St)

- Speeding
- Failure to stop at stop signs at NE 150th St

- Impacts from school parking
- Students loitering blocking traffic
- Litter from students

27th Avenue NE (NE 145th St to NE 160th St)

- Cut-through traffic and speeding between NE 145th St to 28th Pl NE
- Lack of sidewalks for school children
- Request all-way stop at NE 150th St to slow traffic
- Lack of street lights
- Abandoned vehicles NE 160th St to NE 163rd St

27th Avenue NE / 28th Place NE / 25th Place NE (intersection)

- Speeding
- Cut-through traffic

30th Avenue NE

- Cut through traffic
- Speeding
- Lack of sidewalks

31st Ave NE (NTSP)

- Cut through traffic from Lake City Way and NE 145th St
- Speeding
- Pedestrian safety

32nd Avenue NE (NTSP)

- Cut through traffic from Lake City Way and NE 145th St
- Speeding
- Pedestrian safety

NE 146th St and 17th Ave NE

- Speeding
- Collisions at NE 146th St and 17th Ave NE

NE 149th St (30th Ave NE to Bothell Way NE)

- Speeding
- Lack of sidewalks
- Cut-through traffic avoiding signal at NE 145th St and Lake City Way

NE 150th St (15th Ave NE to 25th Ave NE)

- Speeding
- Restore parking on NE 150th St between 17th Ave NE and 20th Av NE
- Leaves on sidewalk along west side of 25th Ave NE

NE 155th St (25th Ave NE to 32nd Ave NE)

- Speeding
- Student parking
- Litter and property damage from students

NE 158th St (25th Ave NE to 30th Ave NE)

- Speeding
- Student parking
- Lack of sidewalks

NE 160th St (25th Ave NE to 28th Ave NE)

- Lack of sidewalks
- Speeding (Request traffic circles)
- Failure to stop at existing stop signs
- Low curb height on corners at 28th Ave NE. Motorists driving over curbs.

NE 168th St, east of 25th Ave NE

- Speeding eastbound between 25th Ave NE and 27th Av NE
- Cut-through traffic

The issues identified by the community are shown on the *Citizen Comment Locations* map, following the summaries below.

Traffic-related Issues Summary

As with other neighborhoods, high traffic speed and cut-through traffic is a primary concern identified for several local streets throughout the Briarcrest neighborhood. Two streets of particular concern are 27th Ave NE and NE 160th St. 27th Ave NE is a wide uninterrupted route between NE 145th St and NE 158th St. As a result motorists tend to use this street as a neighborhood arterial route. Briarcrest Elementary students walk along this street to access the school, so reducing traffic speeds and improving pedestrian safety is a high priority.

Similarly, NE 160th street is used as an access route to Lake Forest Park. Like 27th Ave NE, many students walk along NE 160th to access Shorecrest and Kellogg Middle school. A traffic circle was recently installed at the intersection of 27th Ave NE and NE 160th St. Many residents and the Police Department believe that the circle has helped to reduce speeds but residents would like to see additional improvements to further reduce speeds.

Other streets that were identified by residents as having high speeds and cut-through traffic include NE 150th St between 25th Ave NE and 28th Ave NE, 30th Ave NE between NE 145th and NE 149th St. These two routes are linked by open access through a local church parking lot located between 28th Ave NE and 30th Ave NE. Using this access enables motorists to access the traffic signal at 30th Ave NE and NE 145th St, or by pass NE 145th Street to reach Bothell Way. Traffic studies show that these two streets have considerably more volume than adjacent neighborhood streets.

Three intersections were also of particular concern to residents. NE 168th and 25th Ave NE is a three way intersection with stop signs on two legs. Residents raised concern about motorist's confusion at this intersection and the speed at which southbound traffic on 25th Ave NE travels through the intersection. Residents expressed concerns with the intersections of NE 150th and 25th Ave NE as well as NE 150th and 27th Ave NE, requesting all-way stops at both intersections to reduce traffic speeds.

Pedestrian-related Issues Summary

Pedestrian safety is a primary concern for many Briarcrest residents. In particular, residents' concerns about the lack of sidewalks or pedestrian facilities were coupled with concerns of high traffic speeds and volume. The lack of sidewalk on the east side of 25th Ave NE between NE 150th and NE 165th is a key issue for the neighborhood. This street is a key route for students. 25th Ave NE currently has sidewalks on the west side, however many students walk attempt to walk along the east side. Because of the narrow lane width on the east side many students and residents park over the curb and on the shoulder blocking access for pedestrians and forcing them into the street.

The lack of sidewalks along 27th Ave NE is also a key concern. This route is used by students to access Briarcrest Elementary School. Although the street has a wide gravel shoulder on the east side, high traffic speeds and volume create an unfriendly pedestrian environment.

Similarly many high school students walk along NE 160th Street. Although there are curbs along many sections of this street, there are no sidewalks or walkways in place. Like 27th Avenue NE, higher traffic speeds and volume create an unfriendly pedestrian environment.

Although not identified through input received through the survey cards, the Neighborhood Traffic Advisory Committee noted the need for improved pedestrian access along NE 150th Street between 15th and 25th Avenue NE. This street is used by pedestrians to access transit facilities on 15th Ave NE, as for access to Fircrest and to Shorecrest High School. Currently



there is a short segment of sidewalk constructed on the north side of NE 150th St between 15th Ave NE and 17th Ave NE, however continuing the sidewalk to the east could create an important pedestrian link to 25th Ave NE and the broader neighborhood.

BRIARCREST NEIGHBORHOOD RECOMMENDATIONS

The following section presents the recommendations, listed by street, developed for the Briarcrest neighborhood. The rationale and details for various recommendations is included. Summaries for traffic, pedestrian and bicycle recommendations follow at the end of this section, along with the *Neighborhood Plan Recommendations* map illustrating the plan recommendations. A *Neighborhood Identified Concerns* table detailing the complete list of issues identified through the resident's survey cards along with the corresponding plan recommendation is located in the *Appendix*.

15th Avenue NE (NE 145th St to NE 155th St)

Recommendations

- **Install traffic signal at 15th Ave NE and NE 150th St**
- **Construct walkway on east side of 15th Ave NE from NE 150th to NE 155th St (low priority)**

15th Ave NE, between NE 145th St and NE 150th St, is a four lane roadway. Although there is currently a marked crosswalk at this intersection, residents have concerns of pedestrian safety. City of Shoreline has plans to install a full signal at this intersection in 2007 which will facilitate pedestrian crossings.

In addition, construction of a walkway along the east side of 15th Ave NE, between NE 150th St and NE 155th St, will improve pedestrian access to transit stops and will provide a portion of the missing sidewalk that will ultimately lead to Hamlin Park.

17th Ave NE (NE 145th St to NE 150th St)

Recommendations

- **Install traffic circle on 17th Ave NE at NE 146th St and NE 148th St (high priority)**
- **Install walkway on one side of 17th Ave NE between NE 145th St and NE 150th St (medium priority)**

Residents along 17th Ave NE have participated in the NTSP in an effort to reduce traffic speeds and discourage cut-through traffic. Studies show this street carries a higher volume of traffic than adjacent neighborhood streets. The installation of two traffic circles along this route will reduce speeds. In addition, construction of a walkway along one side of 17th Ave NE will narrow the roadway and help to further reduce speeds. This route appears to be used heavily by pedestrians walking to and from Fircrest.

20th Ave NE (NE 145th St to NE 150th St)

Recommendation

- **Install traffic circle at 20th Ave NE and NE 147th St (medium priority)**

Through Neighborhood Traffic Action Planning process, the Neighborhood Traffic Advisory Committee recognized that 20th Ave NE experiences speeding on this street. Install traffic circle to reduce speeds and improve intersection safety.

25th Avenue NE (NE 145th St to NE 168th St)

Recommendations

- **Continued Police enforcement of traffic speeds.**
- **Improve sidewalk and pedestrian access on the west side of 25th Ave NE north of NE 145th St (medium priority)**
- **Trim vegetation on SW and SE corners at NE 150th St**
- **Construct walkway along east side of 25th Ave NE, between NE 155th St and NE 168th St (high priority)**
- **Install curb ramps on intersections of NE 155 St, NE 158 St, and NE 160 St**
- **Reconfigure intersection of 25th Ave NE and NE 168th St (high priority)**
- **Construct walkway on west side of 25th Ave NE at NE 168th St (high priority)**
- **Install parking restrictions on east side of 25th Ave NE in advance of intersections.**

25th Ave NE is the primary north/south arterial corridor through the Briarcrest neighborhood. Because both Shorecrest High School and Kellogg Middle School are located on this street, there is high pedestrian traffic. Currently there are sidewalks on the west side of 25th Ave NE, however there are no sidewalks on the east side. Currently students and residents park over the curb on the east side, making it difficult for pedestrians to walk without being in the street.

To improve pedestrian access, construct a walkway along the east side between NE 150th St and NE 168th St. Re-stripe 25th Ave NE, narrowing the bike lane on the west side and moving the center line to the west, in order to accommodate parking. Construct curb ramps at NE 155th St, NE 158th St, and NE 160th St to enhance pedestrian access.

A primary concern of residents is the intersection of 25th Ave NE and NE 168th St. Currently this 3-way intersection is controlled by two stop signs. Southbound traffic does not have to stop, which can cause confusion to northbound motorists. Reconfigure the intersection to bring east leg in at a 90 degree angle to the intersection and remove northbound stop sign. (See diagram/figure in Appendix) This reconfiguration may also discourage cut-through traffic on NE 168th St, east of 25th Ave NE. As part of the reconfiguration, construct walkway on the west side of 25th Ave NE to improve pedestrian access and safety.

Residents have expressed concerns of cars parked and vegetation on the east side of 25th Ave NE, restricting visibility for motorists attempting to turn onto 25th Ave NE. To improve visibility, install parking restrictions and trim vegetation where necessary.

26th Avenue NE (NE 145th St to NE 160th St)

Recommendations

- **Police enforcement of traffic speeds**
- **Install traffic circles on 26th Ave NE at NE 147th St and NE 150th St (high priority)**
- **Work with school to address litter and loitering issues**
- **Install stop bars at existing all-way stop at 26th Ave NE and NE 158th St**

26th Ave NE is a local neighborhood street. The street is unimproved, lacking curbs and sidewalks between NE 145th St and NE 153rd St. Request additional Police enforcement of traffic speeds. Install traffic circles on 26th Ave NE at the intersections of NE 147th St and NE 150th St. This will reduce speeds and improve intersection safety at NE 150th St. The presence of constructed curbs and parking on both sides of the street on 26th Ave NE, North of NE 153rd St, help to maintain lower speeds in that location.

Work closely with Shorecrest High School to identify measures which will discourage student parking in the neighborhood, alleviating loitering and litter issues.

Install painted stop bars on pavement to increase driver awareness and compliance of the existing all-way stop at 26th Ave NE and NE 158th St.

27th Avenue NE (NE 145th St to NE 160th St)

Recommendations

- **Install walkway on both sides of 27th Ave NE from NE 145th St to NE 160th St**
 - **NE 150th St – NE 155th St east side portion: very high priority**
 - **NE 145th St – NE 150th St east side portion: high priority**
 - **NE 155th St – NE 160th St east side portion: medium priority**
 - **NE 145th St – NE 160th St west side portion: low priority**
- **Work with Police Department on additional speed enforcement.**
- **Post radar speed display units.**
- **Install traffic circles on 27th Ave NE at NE 150th St and NE 155th St (high priority)**

Although 27th Ave NE is a local street, motorists use this route as a neighborhood arterial. High speeds and volume create an unfriendly pedestrian environment, causing

residents to express concerns of pedestrian safety. This route is used by students to access Briarcrest Elementary and Shorecrest High School. The Neighborhood Traffic Advisory Committee would like this street to be a pedestrian corridor.

Construct walkway on the east side of 27th Ave NE to increase pedestrian access. This walkway may narrow the street which will further reduce traffic speeds. Future construction of walkway on west side of 27th Ave NE will help create the pedestrian corridor desired by the neighborhood.

Work with Police for speed enforcement, and use radar speed display signs to increase driver awareness of posted speed limit. Install traffic circles at NE 150th St and NE 155th St to break up the uninterrupted route to slow traffic and increase pedestrian safety.

27th Avenue NE / 28th Place NE / 25th Place NE (intersection)

Recommendations

- **Install center approach lines on 27th Ave NE and 28th Pl NE (low priority)**

Residents have identified 27th Ave NE and 28th Pl NE as a cut-through route from 25th Ave NE to NE 165th St. In particular, the intersection of these two streets is a wide and open intersection. Adjacent residents have expressed concerns of high speeds at this intersection as well as motorists cutting around the corners too closely. Install center approach lines on 27th Ave NE and 28th Pl NE to encourage motorists to stay on the appropriate side of the roadway.

30th Avenue NE (NE 145th to NE 149th St)

Recommendations

- **Increase Police Enforcement of traffic speeds**
- **Install traffic circle at 30th Ave NE and NE 147th St (high priority)**
- **Install programmable lens on traffic signal at NE 145th St & 30th Ave NE**

30th Ave NE is a local neighborhood street with high volumes. This is part of a route commonly used by both local neighborhood traffic as well as cut-through traffic, to access the signal at 30th Ave NE and NE 145th St. This route includes use of an easement for a church parking lot located between 28th and 30th Ave NE north of NE 147th. Residents have expressed the importance of maintaining this access. To reduce speeds along 30th Ave NE, install a programmable lens on the traffic signal at NE 145th St for southbound drivers, which will set the distance at which the signal lens can be observed. This may discourage motorists from speeding up to reach the intersection for a green light.

In addition, work with Shoreline Police for additional speed enforcement and install a traffic circle at 30th Ave NE and NE 147th Street to reduce speeds, and increase pedestrian safety.

31st Avenue NE (NE 145th to NE 149th St)

Recommendations

- **Increase Police Enforcement of traffic speeds**
- **Install traffic circle at 31st Ave NE and NE 147th St (medium priority)**

31st Ave NE is an unimproved local neighborhood street. NE 147th St is the only street that intersects this route between NE 145th St and NE 140th St. Residents state that motorists use this street to avoid the traffic signal at NE 145th St and Lake City Way, particularly during commute traffic. Similar concerns have been expressed by residents on both 32nd Ave NE and 30th Ave NE, although studies show that 31st Ave NE has the lowest traffic volumes. Installation of a traffic circle at NE 147th St would help to break up the long uninterrupted route, improve intersection safety and reduce speeds.

32nd Avenue NE (NE 145th to NE 149th St)

Recommendations

- **Increase Police Enforcement of traffic speeds**
- **Install traffic circle at 31st Ave NE and NE 147th St (medium priority)**

31st Ave NE is an unimproved local neighborhood street. NE 147th St is the only street that intersects this route between NE 145th St and NE 140th St. Residents state that motorists use this street to avoid the traffic signal at NE 145th St and Lake City Way, particularly during commute traffic. Similar concerns have been expressed by residents on both 32nd Ave NE and 30th Ave NE, although studies show that the volume 31st Ave NE and 32nd Ave NE are considerably less than that of 30th Ave NE. Installation of a traffic circle at NE 147th St would help to break up the long uninterrupted route, improve intersection safety and reduce speeds.

NE 146th St and 17th Ave NE

Recommendations

- **Install traffic circle at NE 146th St and 17th Ave NE (high priority)**

Residents express concerns about collisions at this intersection. State records indicate there have been two reported collisions over the past five years. Both streets are local

neighborhood streets with 25mph speed limits; however, NE 146th St is currently controlled by stop signs. Install a traffic circle at 17th Ave NE and NE 146th St, to improve intersection safety and reduce traffic speeds along 17th Ave NE. Traffic circles have been shown to reduce both collisions and speeds at intersections.

NE 147th St (15th Ave NE to 23rd Ave NE)

Recommendations

- **Install traffic circle at NE 146th St and 20th Ave NE (medium priority)**
- **Install walkway between 15th Ave NE and 23rd Ave NE (medium priority)**

Although no concerns were identified through the resident survey cards, the Briarcrest Neighborhood Traffic Advisory Committee, believe that a walkway on NE 147th St would help to improve local pedestrian access through the immediate neighborhood by providing a pedestrian connection to the recommended walkway on 17th Ave NE as well as to 15th Ave NE retail and public transportation facilities.

Installation of a circle at 20th Ave NE would reduce traffic speeds on 20th Ave NE improving pedestrian safety, and would help to improve overall intersection safety.

NE 149th St (30th Ave NE to Bothell Way NE)

Recommendations

- **Install walkway between 15th Ave NE and 23rd Ave NE (medium priority)**

49th Ave NE is a local neighborhood street. Residents state that motorists use this street in conjunction with 30th, 31st, or 32nd Ave NE to avoid the traffic signal at NE 145th St and Bothell Way NE. Pedestrians walk in the street because of an open ditch on the north side and parked cars in the right-of-way on the south side. Visibility for pedestrians and vehicles is limited due to the curvature of the roadway. To improve pedestrian access and reduce traffic speeds, construct a walkway on the south side. The walkway would narrow the street width and encourage lower speeds. This may require reconfiguring the parking for the adjacent apartment complex. Work closely with apartment owners.

NE 150th St (15th Ave NE to 25th Ave NE)

Recommendations

- **Police enforcement of traffic speed**
- **Install parking restrictions**
- **Construct sidewalk on north side of street**

- **17th Ave NE to 20th Ave NE, north side portion: high priority**
- **20th Ave NE to 25th Ave NE, north side portion: medium priority**

NE 155th St is an arterial route between 15th Ave NE and 25 Ave NE. Residents express concerns about traffic speed and pedestrian safety. The Fircrest site and Shorecrest High School both contribute to pedestrian traffic along this street. Because this is an arterial street, physical traffic calming devices such as traffic circles or speed humps, may not be appropriate. Work with police to enforce speed limit. Complete sidewalk on north side of NE 155th St between 17th Ave NE and 25th Ave NE to increase pedestrian access. The segment between 17th Ave NE and 20th Ave NE is considered a high priority because it completes the missing link from Fircrest to 15th Ave NE retail and transit.

Reinstall parking restrictions near 17th Ave NE to improve visibility for residents exiting driveways on the east side of NE 155th St.

NE 150th St and 25th Ave NE (intersection)

Recommendation

- **Trim vegetation on SE and SW corners**

The arterial portion of NE 150th St ends at 25th Ave NE. Residents have requested an all-way stop at this intersection to reduce speeds on 25th Ave NE and to facilitate crossing and turning movements. Traffic studies indicate that an all-way stop is not appropriate at this time, however the City will continue the intersection for future changes. Work with police to enforce traffic speed on 25th Ave NE. Trim vegetation on SE and SW corners to improve visibility.

NE 155th St (25th Ave NE to 32nd Ave NE)

Recommendations

- **Work with school to discourage student parking**
- **Police enforcement**
- **Traffic circle at NE 155th St and 27th Ave NE**

NE 155th St is a local neighborhood street. High school students park and walk along this street between 25th Ave NE and 27th Ave NE. Residents complain of excess litter and loitering. Work with school to improve/encourage additional student parking on campus which will reduce student pedestrian traffic through the neighborhood.

NE 155th St between 27th Ave NE and 32nd Ave NE is used by students to access the backside of Briarcrest Elementary school. This street is also used by school buses to pick up and drop off students. Install walkway on the north side on NE 155th St between 27th Ave NE and 32nd Ave NE to increase pedestrian access.

See 27th Ave NE recommendations (above) for details on traffic circle.

NE 158th St (25th Ave NE to 30th Ave NE)

Recommendations

- **Install walkway on south side of NE 158th St (high priority)**
- **Install stop bars at NE 158th St and 26th Ave NE**
- **Install parking restriction on northwest corner 158 and 30th Ave NE**

NE 158th St is utilized by students to access Shorecrest High School. In addition, Briarcrest Elementary students walk along NE 158th St to access facilities at Shorecrest and Kellogg Middle School. Construct a walkway on the south side of 158 from 30 to 25 to improve pedestrian access and safety. Install stop bars at 26th Ave NE to increase driver awareness and improve compliance of existing all-way stop.

Residents express concerns of restricted visibility at the intersection of NE 158th St and 30th Ave NE. Install parking restriction on northwest corner to improve sight lines.

NE 160th St (25th Ave NE to 28th Ave NE)

Recommendations

- **Install traffic circle at 28th Ave NE (high priority)**
- **Install walkway on one side of NE 160th St from 25th Ave NE to 28th Ave NE (high priority)**
- **Install walkway on second side of NE 160th St from 25th Ave NE to 28th Ave NE (low priority)**
- **Install new curbs on all corners at 27th Ave NE**
- **Police enforcement**

NE 160th St is a key route for both traffic and pedestrians between 25th Ave NE and Lake Forest Park. This route is heavily used by Shorecrest students and parents. Currently there is a traffic circle at 27th Ave NE to reduce speeds, however due to low curb height on the corners of the intersection, motorists are driving up and over the curbs. Install traffic circle at 28th Ave NE to further reduce speeds. Reconstruct corners at 27th Ave NE to improve effectiveness of existing traffic circle. Construct walkway on NE 160th St to improve pedestrian access. Continue to work with police department to enforce traffic speeds.

NE 168th St, east of 25th Ave NE

Recommendation

- **Reconfigure intersection of 25th Ave NE and NE 168th St (high priority)**

The alignment of the intersection of 25th Ave NE and NE 168th St allows eastbound arterial traffic to easily continue off the arterial and onto the non-arterial segment of NE 168th St. As a result, some motorists use this route to cut-through the neighborhood. Reconfigure the intersection to bring east leg in at a 90 degree angle to the intersection and encourage arterial traffic southbound onto 25th Ave NE. (See diagram/figure in Appendix)

See 25th Ave NE (above) for additional details of this location.

Traffic Recommendation Summary

As with many other neighborhoods, traffic speeds are a major concern for the community. 25th Ave NE is the primary arterial route through the Briarcrest neighborhood. Both Shorecrest High School and Kellogg Middle School are located along 25th Ave NE, generating considerable traffic during peak school periods. The city has implemented efforts to reduce speeds, such as police enforcement and the use of radar display units. Arterial speeds continue to be a concern along both 25th Ave NE and NE 150th St. The use of physical traffic calming devices, such as speed humps and traffic circles, on arterials may redirect traffic to non-arterial streets and therefore are not recommended. The plan recommends continuing educational efforts and enforcement to change driver behavior.

Many local neighborhood streets also have concerns about speeding and cut-through traffic. 17th Ave NE, 27th Ave NE and NE 160th St are particular concerns. 27th Ave NE is a wide uninterrupted street which is used by many as an alternate arterial route. The Briarcrest neighborhood would like to calm this street and improve pedestrian access to create a north/south pedestrian corridor. NE 160th St is also used by many motorists to access the Lake Forest Park neighborhood. This street is heavily utilized by Shorecrest High school students. Due to the lack of sidewalks, many students walk in the street. The city had already installed one traffic circle on this street. The plan recommends the installation of a second traffic circle at 28th Ave NE to further reduce speeds and change driver's perception of the street from arterial to neighborhood. Similar treatments are recommended for other heavily trafficked streets such as 17th Ave NE and 30th Ave NE.

NE 168th St and 25th Ave NE is a three-way intersection, controlled by two stop signs. Residents identify this as a confusing intersection. Reconfiguring this intersection to bring the east leg in at a 90 degree angle and remove the stop sign for northbound traffic on 25th

Ave NE will redirect flow along the arterial route, discourage cut-through traffic, improve pedestrian safety and reduce confusion.

Pedestrian Recommendation Summary

Improvement to Briarcrest's pedestrian environment is a high priority. Strategies for improving pedestrian safety include installation of sidewalks or walkways, along with measures to reduce traffic speed to facilitate pedestrian crossings.

There are three schools in the Briarcrest neighborhood: Briarcrest Elementary, Kellogg Middle School and Shorecrest High School. A significant portion of pedestrian traffic is generated by these schools. As a result, installing walkways to improving pedestrian safety and access along school routes such as 25th Ave NE, NE 158th St and NE 160th St are high priorities.

25th Ave NE is a particular concern since this is an arterial street. There is currently a sidewalk on the west side of the street; however, many students and pedestrians continue to walk along the east side. Students and residents park over of the curb and on the planting strip on the east side, forcing pedestrians to maneuver around them and at times walk in the street. Constructing a walkway on the east side of 25th Ave NE would require moving the centerline to the west, to allow residents to continue to park on the east side but not over the curb.

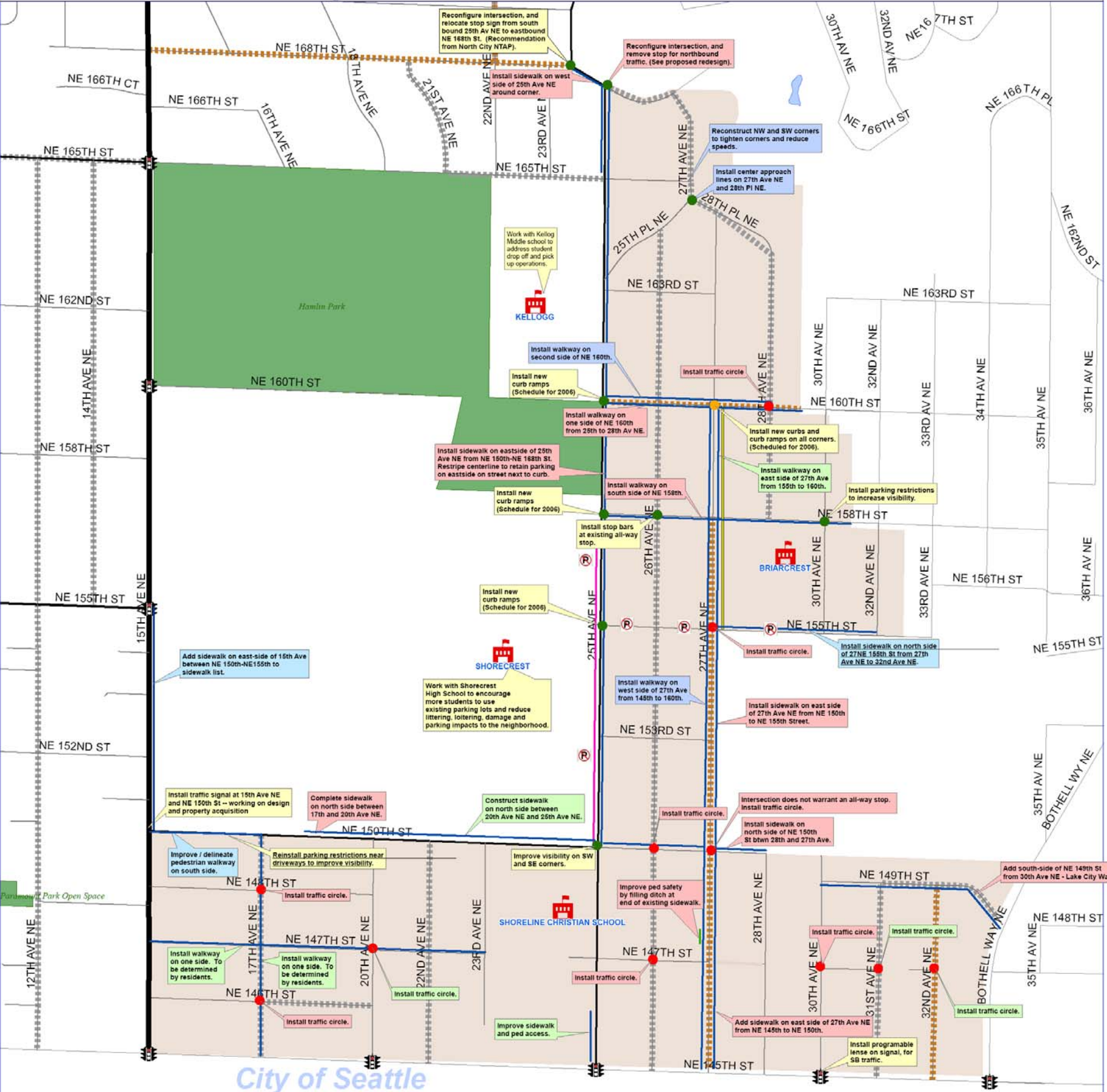
Creating good pedestrian links to retail and public transit is also a priority. The plan recommends improving pedestrian access to businesses and transit along 15th Ave NE and NE 145th via NE 150th St, NE 147th St and 17th Ave NE. NE 150th would provide access for the pedestrians coming to and from the Fircrest complex. This plan also recommends installing walkways on additional local streets such as 17th Ave NE to enhance the neighborhood pedestrian environment and create additional pedestrian routes to retail and transit.

This plan also recommends a north/south pedestrian corridor along 27th Ave NE. This route would be used for recreational walking and for student access to Briarcrest Elementary school. Construction of a walkway along this route would reduce traffic speeds and make a more pedestrian friendly environment.

SHORELINE Geographic Information System

BRIARCREST

Neighborhood Plan Recommendations



Legend

- School
- Open Water
- Park
- Active NTSP Street
- NTSP (Historical)
- Proposed Traffic Circle
- Spot Intersection Improvement
- Existing Traffic Circle
- Proposed Sidewalk Location
- High Priority Recommendation
- Medium Priority Recommendation
- Low Priority Recommendation
- Recommendations which are completed or will be incorporated into existing annual program work plan.
- Recommendations underlined were received through neighborhood open house review on 6-15-06

0 0.125 0.25 Miles

CITY OF SHORELINE

No warranties of any sort, including accuracy, fitness, or merchantability, accompany this product.

Revised 8-2-06

Briarcrest Recommended Improvement Projects		
<i>Traffic Projects</i>		
Location	Project	Priority
NE 146 th St & 17 th Ave NE	Traffic circle	High
NE 148 th St & 17 th Ave NE	Traffic circle	High
NE 147 th St & 26 th Ave NE	Traffic circle	High
NE 150 th St & 26 th Ave NE	Traffic circle	High
NE 168 th St & 25 th Ave NE	Reconfigure intersection	High
NE 150 th St & 27 th Ave NE	Traffic circle	High
NE 155 th St & 27 th Ave NE	Traffic circle	High
NE 160 th St & 28 th Ave NE	Traffic circle	High
NE 147 th St & 30 th Ave NE	Traffic circle	High
NE 147 th St & 20 th Ave NE	Traffic circle	Medium
NE 147 th St & 31 st Ave NE	Traffic circle	Medium
NE 147 th St & 32 nd Ave NE	Traffic circle	Medium
NE 165 th St & 27 th Ave NE	Reconstruct Northwest/sw corners	Low
25 th PI NE / 27 th Ave NE / 28 th PI NE	Install center approach lines	Low

Briarcrest Recommended Improvement Projects		
<i>Pedestrian Projects</i>		
Location	Project	Priority
25 th Ave NE, NE 150 th St to NE 168 th St	Walkway on east side	High
27 th Ave NE, NE 145 th St to NE 155 th St	Walkway on east side	High
27 th Ave NE, north of NE 147 th St	Fill ditch to extend walkway	High
NE 149 th St, 30 th Ave NE to Bothell Way	Walkway on south side	High
NE 150 th St, 17 th Ave NE to 20 th Ave NE	Walkway on north side	High
NE 150 th St, 28 th Ave NE to 27 th Ave NE	Walkway on north side	High
NE 158 th St, 25 th Ave NE to 30 th Ave NE	Walkway on south side	High
NE 160 th St, 25 th Ave NE to 28 th Ave NE	Walkway on one side	High
NE 160 th St, 25 th Ave NE to 28 th Ave NE	Walkway on second side	Low
25 th Ave NE at NE 168 th St	Walkway on west side	High
17 th Ave NE, NE 145 th St to NE 150 th St	Walkway on one side	Medium
NE 147 th St, 15 th Ave NE to 22 nd Ave NE	Walkway on one side	Medium
NE 150 th St, 20 th Ave NE to 25 th Ave NE	Walkway on north side	Medium
25 th Ave NE, NE 145 th St to 200 ft north	Improve existing sidewalk on west side	Medium
27 th Ave NE, NE 155 th St to NE 160 th St	Walkway on east side	Medium
15 th Ave NE, NE 150 th St to NE 155 th St	Walkway on east side	Low
NE 150 th St, 15 th Ave NE to 17 th Ave NW	Improve/delineate pedestrian walkway on south side	Low
27 th Ave NE, NE 145 th St to NE 160 th St	Walkway on west side	Low
NE 155 th St, 27 th Ave NE to 32 nd Ave NE	Walkway on north side	Low

IMPLEMENTATION

The intent of this plan is to develop both long and short term recommendations that will improve the safety and livability of the neighborhood. Although there is no single source to fund the plan in its entirety, elements of the plan will be implemented over time as funding sources are identified and community support is demonstrated.

Several of these recommendations have been or can be implemented quickly through City programs such as the Neighborhood Traffic Safety Program. Other recommendations, such as the installation of physical devices or changes to the roadway will need strong community support and an identified funding source.

Potential funding sources:

- Neighborhood Traffic Safety Program – this program works directly with adjacent residents to improve neighborhood traffic safety
- Small Works Traffic Program – this program funds spot improvements to improve traffic safety and mobility
- Walkway Priority Program – this program funds construction of priority sidewalk routes as identified by the transportation master plan and neighborhood priorities
- Capital Improvement Process – this process identifies funding needs for larger, capital projects
- Local Improvement District – this program allows residents to raise funds through increased property tax for capital improvement projects
- Mitigation – elements of the plan may be implemented as mitigation for larger development projects which occur throughout the neighborhood

Appendix



Briarcrest Neighborhood Identified Concerns Table												
ID	LASTNAME	SIGN	VEGETATION	SPEED	VOLUME	PEDESTRIAN	BIKE	OTHER	LOCATION	PROBLEM DESCRIPTION	RESPONSE	STATUS
15TH AVE NE												
BC 1063A	Bradshaw					x			15th Av NE & NE 150th St	Difficult for pedestrians to cross, esp. during rush hour, night time and rain storms. Request pedestrian demand lights.	Currently working on design and property acquisition to install traffic signal at 15th Ave NE and NE 150th St.	New signal pending (2007).
BC 1026	PIPER-SACK			x	x				15TH AVE NE	Reconfiguration of 15th from four lanes to three has increased traffic on 25th Ave NE.	Changes to lane configuration were approved by City Council in an effort to improve pedestrian and vehicular safety. We will continue to monitor and assess conditions along 15th Ave NE.	Traffic studies on going.
BC 1007	TERRY							x	15TH AVE NE - NE 170TH ST	Center two-way left turn land becomes left turn pocket for northbound vehicles. Cars routinely ignore painted stripes and illegally turn into 7-eleven parking lot. Need raised curb to define turn pocket.	As part of continued effort to monitor and assess conditions on 15th, evaluate removing left turn pockets at NE 170th and NE 168th St and replacing with two way left turn lane,	Traffic studies on going.
BC 1008	TERRY	x				x		x	15TH AVE NE - NE 170TH ST	Revisit need for traffic signal. Heavy traffic on 15th backs-up from NE 175th St and makes it impossible for people to get out of the neighborhood on both sides of the street.	The intersection of 15th Av NE and NE 170th St does not meet Federal criteria for signal at this time. Will continue to monitor traffic conditions for possible future changes.	Traffic studies on going.



Briarcrest Neighborhood Identified Concerns Table												
ID	LASTNAME	SIGN	VEGETATION	SPEED	VOLUME	PEDESTRIAN	BIKE	OTHER	LOCATION	PROBLEM DESCRIPTION	RESPONSE	STATUS
BC 1061A	Gurskell							x	15th Ave NE & NE 150th St	Narrowing of 2 lanes to 1.	Reviewed signing at 15th and 150th and it is consistent with standard signing for merging lanes.	Completed
BC 1063B	Bradshaw					x			15th Ave NE from NE 150th to NE 155th St.	Dangerous to walk along narrow path between curb and chain link fence / bank.	Add sidewalk on east side of 15th Ave between NE 150th and NE 155th to sidewalk list. (Low priority)	Funding source required.
BC 1066	Mathews							x	15th Ave NE - 150th to 165th St	Hard to travel 15th Ave NE btwn 4-7pm M-F. Traffic moves at a crawl due to 3 lane set up. Has caused traffic to move to 25th. Would like to see 15th changed back to four lanes.	Changes to lane configuration were approved by City Council in an effort to improve pedestrian and vehicular safety. We will continue to monitor and assess conditions along 15th Ave NE.	Traffic studies on going.
25TH AVE NE												
BC1065	TO							x	25th Av NE from NE 150th to NE 168th St	Construction of sidewalks on east side of 25th would remove parking causing it to move to 26th Ave NE, making 26th a busy street.	Add east side of 25th Ave NE from NE 150th to NE 165th to walkway project list. Retain parking on eastside on street next to curb. May require narrowing or removal of striped bike lane. (High priority)	Funding source required.
BC 1053	VISSER	x							25th Ave & NE 150th St	Numerous near misses and a few collisions, made more difficult by increasing westbound traffic on NE 150th St. Is it possible to make this a four-way intersection?	Intersection does not meet warrants for all-way stop at this time. Trim vegetation and install parking restrictions to improve visibility. Continue to monitor intersection.	Work order pending.



Briarcrest Neighborhood Identified Concerns Table												
ID	LASTNAME	SIGN	VEGETATION	SPEED	VOLUME	PEDESTRIAN	BIKE	OTHER	LOCATION	PROBLEM DESCRIPTION	RESPONSE	STATUS
BC 1005	TERRY	x		x					25TH AVE NE - NE 150TH ST	Bad intersection. Would like some form of traffic control. A 4-way stop or traffic light.	Intersection does not meet warrants for all-way stop at this time. Trim vegetation and install parking restrictions to improve visibility. Continue to monitor intersection.	Work order pending.
BC 1020	PIPER-SACK					x			25TH AVE NE - NE 150TH TO NE 158TH ST	Need sidewalks and dedicated street parking.	Add east side of 25th Ave NE from NE 150th to NE 165th to walkway project list. Retain parking on eastside on street next to curb. May require narrowing or removal of striped bike lane. (High priority)	Funding source required.
BC 1024	PIPER-SACK		x			x			25TH AVE NE - NE 150TH TO NE 160TH ST	Cars park up on the curb taking the entire sidewalk area, forcing pedestrians to walk in the street. Lack of parking areas. Also, overgrown vegetation forces pedestrians into the street.	Add east side of 25th Ave NE from NE 150th to NE 165th to walkway project list. Retain parking on eastside on street next to curb. May require narrowing or removal of striped bike lane. (High priority)	Funding source required.
BC 1025	PIPER-SACK	x							25TH AVE NE - NE 150TH TO NE 160TH ST	Too many cars parked on the street, especially at the corners. Makes it hard to see around the corner for on-coming cars. Need "No Parking Near Corner" signs.	Work with neighborhood to identify problem locations. Install parking restrictions at corners of identified locations.	Work order pending.
BC 1027	BAYNE					x			25TH AVE NE - NE 153RD ST	I would love sidewalks in front of my home. Please let me know if I can help process in any way!	Add east side of 25th Ave NE from NE 150th to NE 165th to walkway project list. Retain parking on eastside on street	Funding source required.



Briarcrest Neighborhood Identified Concerns Table												
ID	LASTNAME	SIGN	VEGETATION	SPEED	VOLUME	PEDESTRIAN	BIKE	OTHER	LOCATION	PROBLEM DESCRIPTION	RESPONSE	STATUS
											next to curb. May require narrowing or removal of striped bike lane. (High priority)	
BC 1015A	HARRISON			x		x			25TH AVE NE - NE 153RD TO NE 160TH ST	Vehicles parked on the east-side curb, forces pedestrians into the roadway. Sometimes walk with traffic moving behind them - Quite likely affecting elementary school students going to and from school. Also restricting visibility coming out of my driveway.	Add east side of 25th Ave NE from NE 150th to NE 165th to walkway project list. Retain parking on eastside on street next to curb. May require narrowing or removal of striped bike lane. (High priority)	Funding source required.
BC 1021A	PIPER-SACK	x				x			25TH AVE NE - NE 153RD TO NE 165TH ST	East side of 25th by Shorecrest H.S. - when cars not parked there could be danger of cars passing on right to get past turning vehicles. Need "No passing on the right" signs installed to reduce injury or death to a pedestrian.	"No passing on right" signs not appropriate. State law permits roadways to be driven as two lanes if adequate street width.	
BC 1021B	PIPER-SACK	x				x			25TH AVE NE - NE 153RD TO NE 165TH ST	West side of 25th by Shorecrest H.S. - Cars parking in the bike lane while parents picking up kids - potential accidents with cars in the lane. Maybe signs needed - "no stopping for pick up" would help.	Re-stripe 25th to allow on-street parking on east side. This will require narrowing or removal of bike lane and shifting centerline to the west which may discourage parking next to curb on west side.	Coordinate w/ walkway installation. Funding source required



Briarcrest Neighborhood Identified Concerns Table												
ID	LASTNAME	SIGN	VEGETATION	SPEED	VOLUME	PEDESTRIAN	BIKE	OTHER	LOCATION	PROBLEM DESCRIPTION	RESPONSE	STATUS
BC 1022	PIPER-SACK	x							25TH AVE NE - NE 153RD TO NE 165TH ST	Kellogg MS . Street get congested with parents picking up kids. Need signs for designated parking areas, bigger parking lots, " No passing on right" signs "No parking or stopping for pick ups".	Work with school to develop more effective student drop off and pick up plan.	
BC 1003	TERRY			x		x			25TH AVE NE - NE 153RD TO NE 165TH ST	Need sidewalks on east side of street across from Shorecrest HS, Kellogg MS, and Hamlin Park.	Add east side of 25th Ave NE from NE 150th to NE 165th to walkway project list. Retain parking on eastside on street next to curb. May require narrowing or removal of striped bike lane. (High priority)	Funding source required.
BC 1015B	HARRISON			x		x			25TH AVE NE - NE 155TH TO NE 157TH ST	Sidewalk on west-side between NE 155th and NE 157th St is inaccessible due to elevation and railing.	Railing necessary to provide assistance to pedestrians and protection from steep grade. Add east side of 25th Ave NE from NE 150th to NE 165th to walkway project list, which will provide access to existing crosswalks at NE153rd and NE 158th Street. (High priority)	
BC 1030	SLEEPER		x					x	25TH AVE NE - NE 150th St	Concerned about the possible loss of parking on 25th if sidewalks are installed. Also leaves not raked / cleaned up on walkways.	Plan to install sidewalks on 25th would not remove parking on the east side of 25th Ave NE, so unlikely to impact 150th.	



Briarcrest Neighborhood Identified Concerns Table												
ID	LASTNAME	SIGN	VEGEGATION	SPEED	VOLUME	PEDESTRIAN	BIKE	OTHER	LOCATION	PROBLEM DESCRIPTION	RESPONSE	STATUS
BC 1033C	ANDERSON					x		x	25TH AVE NE - NE 168TH ST	Sidewalk on SW corner driven through - lack of engineered controls.	Add west side of 25th at NE 168th to walkway project list. (High priority)	Funding source required.
BC 1057	BOGERT			x		x			25th Ave NE btwn NE 145th St & 168th St	Traffic using 25th to avoid 15th. Problem with excessive speed, both when children are around schools & at other times. It is not uncommon to 40+ mph. Needs more enforcement.	Refer to Police for additional enforcement. Encourage east side parking adjacent to curb instead of on planting strip to help narrow roadway and reduce speeds.	Coordinate parking revisions with walkway installation.
BC 1052	REPIKOFF							x	25TH AVE NE FROM NE 153RD TO 160TH ST	Concerned with potential parking loss due to sidewalk on east side.	Plan to install sidewalks on 25th would include retaining parking on the east side of 25th Ave NE, so parking unlikely to shift to other streets.	
BC 1067	Van Dyke			x					25th Ave & NE 150th St	High volume area. Would like 4-way stop to reduce collisions and slow traffic.	Intersection does not meet warrants for all-way stop at this time. Trim vegetation and install parking restrictions to improve visibility. Continue to monitor intersection.	Work order pending.
BC 1072	Guy	x						x	25th Ave NE & NE 168th St	3-way intersection has only two stop signs, would like it to be all-way stop to prevent collisions.	Revise curb alignment to require westbound motorists continuing onto non-arterial segment of N 168th St to make a 90 degree turn. Remove stop for northbound traffic on 25th Ave NE.	Funding source required.



Briarcrest Neighborhood Identified Concerns Table												
ID	LASTNAME	SIGN	VEGETATION	SPEED	VOLUME	PEDESTRIAN	BIKE	OTHER	LOCATION	PROBLEM DESCRIPTION	RESPONSE	STATUS
BC 1058	SLEEPER						x		NE 150TH St & 25th Ave NE	Need parking on 25th Ave in front of our houses. Not many bikes use 25th. Putting in bike lanes and sidewalks would be waste of money and inconvenient.	Plan to install sidewalks on 25th would not remove parking on the east side of 25th Ave NE. May require removal of bike lane. (High priority)	Funding source required.
BC 1031	GRETTE							x	25TH AVE NE - NE 155TH ST -	Don't want sidewalk on east side of 25th. All that parking and traffic will move to 26th, which we need to park our cars since driveway isn't long enough to hold all of our cars. Thank you.	Plan to install sidewalks on 25th would not remove parking on the east side of 25th Ave NE, so unlikely to impact 26th Av NE.	
BC 1039	ADEMESU				x			x	NE 155th ST - 25TH AVE NE	If sidewalk is put on 25th NE, the high school kids will be parking up & down NE 155th St. It would restrict 155th to one lane with parking on both sides. Do not put sidewalks on 25th. Sidewalks already exist on the westside of 25th.	Plan to install sidewalks on 25th would not remove parking on the east side of 25th Ave NE, so unlikely to impact 155th.	
BC 1049	BUCE							x	NE 155TH ST - 25TH AVE TO 26TH AVE NE	Parking. We have excessive overflow of traffic and parking from High School. Do not put sidewalks on 25th w/o provisions for parking.	Plan to install sidewalks on 25th would not remove parking on the east side of 25th Ave NE, so unlikely to impact 155th.	



Briarcrest Neighborhood Identified Concerns Table												
ID	LASTNAME	SIGN	VEGETATION	SPEED	VOLUME	PEDESTRIAN	BIKE	OTHER	LOCATION	PROBLEM DESCRIPTION	RESPONSE	STATUS
26TH AVE NE												
BC 1032	LENIE			x					26TH AVE NE - NE 150TH ST	Speeding. Speeding down 26th heading north, not stopping at stop sign on corner of 26th and 150th St.	Install traffic circles at NE 147th and NE 150th St to lower speeds and improve intersection safety.	Funding source required.
BC 1038	GURSTIEN			x		x		x	26TH AVE NE near NE 158th St	Concerned paved sidewalks on east side of 25th will result in less parking. Then will be more parked cars, loitering, and fast driving on the now-quiet street of 26th. I would consider leaving Shoreline if the quiet street changes.	Plan to install sidewalks on 25th would not remove parking on the east side of 25th Ave NE, so unlikely to impact adjacent streets.	
BC 1040	EDGAR					x		x	26TH AVE NE - NE 153RD TO NE 155TH ST	Parking problems on 26th. Neighbors park a lot of cars on street. Dangerous for pedestrians. Can't school build another parking lot south of school?	Work with school to encourage more students to park in school parking lots.	
BC 1041	TO			x	x				26TH AVE NE - NE 153RD TO NE 155TH ST	Concerned about 26th Ave NE becoming a busy street with cars that used to park on 25th. Important to keep 26th a quiet street.	Plan to install sidewalks on 25th would not remove parking on the east side of 25th Ave NE, so unlikely to impact 26th.	



Briarcrest Neighborhood Identified Concerns Table												
ID	LASTNAME	SIGN	VEGETATION	SPEED	VOLUME	PEDESTRIAN	BIKE	OTHER	LOCATION	PROBLEM DESCRIPTION	RESPONSE	STATUS
BC 1042	MCDONNEL					x		x	26TH AVE NE - NE 155TH ST	Loitering. High School students before, during and after school, stand in the road and block car traffic between 25th and 26th on NE 155th St.	Work with school to encourage more students to park in existing school parking lot, in an effort to reduce number of students parking and loitering in neighborhood.	
BC 1044	MCDONNEL							x	26TH AVE NE - NE 155TH ST	Litter, because high school kids park between 25th and 26th on NE 155th you can see litter everywhere, also along 25th From 150th to 160th St.	Work with school to encourage more students parking in existing school parking lot, in an effort to reduce number of students parking and loitering in neighborhood.	
BC 1035	GRETTE			x					26TH AVE NE - NE 155TH TO NE 160TH ST	High School Students speeding.	Existing stop signs on 26th at NE 155th, 158th, and 160th. Refer to SPD for speed and stop enforcement.	
BC 1051	JORRITSMAN			x	x				26TH AVE NE - NE 158TH ST	No stopping at all-way stop and excessive speeds on 26th Av NE.	Refer to SPD for enforcement. Install stop bars to increase driver awareness.	Work order pending
BC 1065	To			x	x				26th Ave NE - NE 145th to 160th St	Concerned about 26th Ave NE becoming a busy street with cars that used to park on 25th. Important to keep 26th a quiet street.	Plan to install sidewalks on 25th would not remove parking on the east side of 25th Ave NE, so unlikely to impact 26th.	



Briarcrest Neighborhood Identified Concerns Table												
ID	LASTNAME	SIGN	VEGETATION	SPEED	VOLUME	PEDESTRIAN	BIKE	OTHER	LOCATION	PROBLEM DESCRIPTION	RESPONSE	STATUS
27TH AVE NE												
BC 1011	MAGNELLI				x				27TH AVE NE - 28TH PL TO NE 145TH ST	Cut-through traffic and excessive speeds endanger neighborhood residents.	Add both sides of 27th Ave NE from NE 145th to NE 160th to walkway project list. Walkway can improve pedestrian access and help reduce speeds by narrowing effective street width. Priority segment is east side from N 150th to 155th St to improve access for Briarcrest students. In addition, install traffic circles on 27th at NE 150th and 155th Street to help encourage lower speeds and improve intersection safety. (High priority)	Traffic circles installed fall of 2006. Funding source for walkways required.
BC 1034	TOMLIN					x		x	27TH AVE NE - NE 145TH ST	No sidewalks for kids to walk to /from school.	Add both sides of 27th Ave NE from NE 145th to NE 160th to walkway project list. Priority segment is east side from N 150th to 155th St to improve access for Briarcrest students. (High priority)	Funding source required.
BC 1019	NARON					x			27TH AVE NE - NE 145TH TO NE 160TH ST	Sidewalks on both sides of the street. Large school foot traffic before and after school. Kids walking in the streets to get back and forth	Add both sides of 27th Ave NE from NE 145th to NE 160th to walkway project list. Priority segment is east side from N 150th to 155th St to improve	Funding source required.



Briarcrest Neighborhood Identified Concerns Table												
ID	LASTNAME	SIGN	VEGETATION	SPEED	VOLUME	PEDESTRIAN	BIKE	OTHER	LOCATION	PROBLEM DESCRIPTION	RESPONSE	STATUS
										from school.	access for Briarcrest students. (High priority)	
BC 1004	TERRY			x					27TH AVE NE - NE 150TH ST	Suggest a 4-way stop to slow traffic on 27th Ave NE. Long straight-away encourages speeding.	Intersection does not meet warrants for all-way stops. Install traffic circle to encourage lower speeds along 27th Av NE. (High priority)	Temporary traffic circle installed fall 2006.
BC 1006	TERRY					x			27TH AVE NE - NE 150TH TO NE 155TH ST	Urgent need for sidewalk on east side of 27th Ave NE next to Acacia cemetery. Many School-age children walk this route to school.	Add both sides of 27th Ave NE from NE 145th to NE 160th to walkway project list. Priority segment is east side from N 150th to 155th St to improve access for Briarcrest students. (High priority)	Funding source required.
BC 1018	NARON					x		x	27TH AVE NE - NE 155TH TO NE 160TH ST	Need more and/or better street lights. Not enough light at night due to "flickering" or lights far away from each other.	City of Shoreline will be developing street lighting policy in 2006 which will be used to evaluate existing lighting conditions and identify prioritize requests for additional lighting.	Street light policy pending.
BC 1037	TAYLOR			x				x	27TH AVE NE - NE 158TH ST	No Stopping at light and excessive speed. NE 160th is still too fast.	Existing all-way stop at NE 158th. Stop bars or crosswalks currently marked on all approaches. Refer to SPD for "Stop" enforcement. Add both sides of NE 160th St from 25th	Temporary traffic circle installed fall 2006. Identify funding for walkway.



Briarcrest Neighborhood Identified Concerns Table												
ID	LASTNAME	SIGN	VEGETATION	SPEED	VOLUME	PEDESTRIAN	BIKE	OTHER	LOCATION	PROBLEM DESCRIPTION	RESPONSE	STATUS
											Ave NE to 28th Ave to walkway project list. Existing traffic circle at 27th. Install additional circle at 28th to help lower speeds. (High priority, resident's currently circulating petition).	
BC 1016	HOFF	x		x					27TH AVE NE - NE 160TH ST TO NE 145TH ST	Heavy traffic that is speeding. No speed limit signs. No Stop signs. No enforcement.	Existing speed limit signs on 27th north of NE 145th and south of NE 160th St. Refer to SPD for enforcement. Add both sides of 27th Ave NE from NE 145th to NE 160th to walkway project list, to improve pedestrian access and help reduce speeds. Install traffic circles on 27th at NE 150th and 155th Street to help encourage lower speeds. (High Priority)	Temporary traffic circles installed fall 2006. Identify funding for walkway.
BC 1012	MAGNELLI							x	27TH AVE NE - NE 163RD TO NE 160TH ST	Derelict vehicles (most never have moved) block normal access. No access to parking for many residents, very unsightly.	Refer to SPD for enforcement. Work with adjacent residents.	
28TH AVE NE												
BC 1070	Guy			x	x	x			28th Ave NE at 27th Ave NE	South bound cars speed around curve onto 28th. Many kids live near corner.	Revise intersection alignment at NE 168th and 25th Ave NE to discourage cut through traffic. Install center approach lines on 27th Av, 28th PI NE	Work order pending for center lines.



Briarcrest Neighborhood Identified Concerns Table												
ID	LASTNAME	SIGN	VEGEGATION	SPEED	VOLUME	PEDESTRIAN	BIKE	OTHER	LOCATION	PROBLEM DESCRIPTION	RESPONSE	STATUS
											and 25th PI NE to help narrow intersection and provide additional guidance to motorists.	
30TH AVE NE												
BC 1062A	Keene					x			30th Av NE from NE 145th to NE 147th St	Parking on west side of street blocks pedestrian access. Would like painted edge line and parking restrictions to create clear path for pedestrians.	Work to reduce speeds to improve pedestrian safety. Install traffic circle at 30th Ave NE and NE 147th St to help reduce speeds. Install programable visor on signal at NE 145th and 30th for south bound traffic. (High priority)	Temporary traffic circles installed fall 2006.
BC 1062A	Keene							x	30th Av NE from NE 145th to NE 147th St	Two water meters are about 1 1/2' below grade. Afraid someone will trip and fall.	Inspect meters and adjust to proper grade as necessary.	
BC 1073	Herbst							x	30th Av NE - NE 147th St	Icy patch from water off properties onto street.	Field check location.	
BC 1074	Herbst			x		x			30TH Av NE - NE 147th St	Speeding traffic. Foot traffic / school kids with no sidewalks or street lights.	Install traffic circle at 30th Ave NE and NE 147th St to help reduce speeds. Install programable visor on signal at NE 145th and 30th for south bound traffic. (High priority)	Temporary traffic circles installed fall 2006.



Briarcrest Neighborhood Identified Concerns Table												
ID	LASTNAME	SIGN	VEGEGATION	SPEED	VOLUME	PEDESTRIAN	BIKE	OTHER	LOCATION	PROBLEM DESCRIPTION	RESPONSE	STATUS
BC 1075	Herbst			x	x				30TH Av NE - NE 147th St to NE 145th St	Speeding traffic from cut-through and church.	Install traffic circle at 30th Ave NE and NE 147th St to help reduce speeds. Install programable visor on signal at NE 145th and 30th for south bound traffic. (High priority)	Temporary traffic circles installed fall 2006.
BC 1076	Herbst			x	x				30TH Av NE - NE 147th St to NE 145th St	Cut-through traffic from NE 145th St and from LCW using 30th as major thorough fare.	Install traffic circle at 30th Ave NE and NE 147th St to help reduce speeds. Install programable visor on signal at NE 145th and 30th for south bound traffic. (High priority)	Temporary traffic circles installed fall 2006.
NE 145TH ST												
BC 1054	HARRISON							x	NE 145th St & 25th Ave NE	Motorists running red light or failing to signal when turning left. Would like a left turn phase added to the signal.	Traffic signals on NE 145th are owned and operated by City of Seattle. Forward concern to Seattle.	
BC 1061B	Gurskell							x	NE 145th St 16th Av NE to 17th Av NE	Left turn lane to turn left just past gas station (east bound to North bound) would be helpful.	NE 145th is not in Shoreline jurisdiction. Forward concern to City of Seattle.	



Briarcrest Neighborhood Identified Concerns Table												
ID	LASTNAME	SIGN	VEGETATION	SPEED	VOLUME	PEDESTRIAN	BIKE	OTHER	LOCATION	PROBLEM DESCRIPTION	RESPONSE	STATUS
BC 1061C	Gurskell							x	NE 145th St 16th Av NE to 17th Av NE	Left turn arrow to turn north onto 20th and 25th from eastbound 145th.	Traffic signals on NE 145th are owned and operated by City of Seattle. Forward concern to Seattle.	
NE 146TH ST												
BC1064	Katz			x					NE 146th St a& 17th Av NE	Frequent car accidents at this corner due to excessive speed on 17th Ave NE. Speed bumps & signage would help.	Install traffic circles on 17th Ave NE at NE 146th and NE 148th St to reduce speeds and improve intersection safety. Install walkway on one side of 17th Ave NE between NE 145th and NE 150th to help reduce speeds and improve pedestrian access.	Temporary traffic circle at 17 th and 148 th installed fall 2006.
NE 149TH ST												
BC 1055	McCLEAN			x	x				NE 149th St between 30th Av NE & Lake City Way	Students and others use the street to avoid signal at 145th and LCW. Cars speed in excess of 45mph.	Add south side of NE 149th from 30th Av NE to Lake City Way to walkway project list, to provide improved pedestrian access and to narrow street which may encourage lower speeds.	Funding source required.
NE 150TH ST												
BC 1059	RHONE / DUGAN	x		x					NE 150th St & 28th Av NE	My house is on corner, all day long people go flying around that corner. I feel as if the signs were better or patrolled more it might	Review for appropriate signing and pavement markings. Refer to Police for additional enforcement.	



Briarcrest Neighborhood Identified Concerns Table												
ID	LASTNAME	SIGN	VEGEGATION	SPEED	VOLUME	PEDESTRIAN	BIKE	OTHER	LOCATION	PROBLEM DESCRIPTION	RESPONSE	STATUS
										reduce speeds and graffiti on fence.		
BC 1013	MOCK							x	NE 150TH ST - 17TH AVE NE TO 20TH AVE NE	Motor scooter racing on street.	Refer to SPD for enforcement.	
BC 1014	MOCK							x	NE 150TH ST - 17TH AVE NE TO 20TH AVE NE	No parking on NE 150th St - Keep street parking- people in neighborhood need this!	Parking currently restricted on south side to provide pedestrian access. Insufficient street width to allow parking both sides.	
BC 1056	JACOBSON			x					NE 150th St btwn 15th Av NE & 25th Ave NE	Speeding up and down the hill, at intersection of 17th Ave NE, and at intersection to fircrest. Many small accidents, people go to fast on 150th.	NE 150th Street is a collector arterial. Refer to Police for enforcement. Set up radar trailer to increase driver awareness and encourage lower speeds.	
NE 155TH ST												
BC 1043A	MCDONNEL							x	NE 155TH from 25th to 28th Ave NE	School event parking. When cars are parked on both sides of 155th and 158th, only one car can pass through. The road becomes too narrow during school events. The school needs to create more event parking on-site.	NE 155th and 158th are 28' wide which is sufficient to allow parking both sides and one through lane. Existing parking restrictions near some of the corners. Removing parking on one side would result in wider through lane and possibly higher speeds. Work with school on parking to encourage greater use of on site parking	



Briarcrest Neighborhood Identified Concerns Table												
ID	LASTNAME	SIGN	VEGETATION	SPEED	VOLUME	PEDESTRIAN	BIKE	OTHER	LOCATION	PROBLEM DESCRIPTION	RESPONSE	STATUS
											and look at alternatives for special events.	
BC 1046	BUCE							x	NE 155TH ST - 25TH AVE TO 26TH AVE NE	Parking. Lack of sufficient parking at High School results in students parking on 155th. They sometimes park on our front lawn or even drive over the lawn, causing damage to the curb and lawn.	Refer to Police for enforcement. NE 155th and 158th are 28' wide which is sufficient to allow parking both sides and one through lane. Work with school on parking to encourage greater use of on site parking and look at alternatives for special events.	
BC 1047	BUCE			x				x	NE 155TH ST - 25TH AVE TO 26TH AVE NE	Cars driving west along 155th toward the school sometimes drive very fast and are a hazard to pedestrians, children, and pets. Need a traffic circle on 155th.	Refer to SPD for enforcement. Install traffic circle at NE 155th St and 27th Ave NE.	Temporary traffic circle installed fall 2006.
BC 1048	BUCE							x	NE 155TH ST - 25TH AVE TO 26TH AVE NE	Litter. Litter is a major problem during the school year. During lunch, students use our yard as a picnic area and leave their lunch trash on the lawn. Some weeks our trash can is half	Work with school to encourage more students to park in existing school parking lot, in an effort to reduce number of students parking and loitering in neighborhood.	



Briarcrest Neighborhood Identified Concerns Table												
ID	LASTNAME	SIGN	VEGETATION	SPEED	VOLUME	PEDESTRIAN	BIKE	OTHER	LOCATION	PROBLEM DESCRIPTION	RESPONSE	STATUS
										full from litter we collect from lawn. School needs to be closed campus.		
BC 1050	BUCE							x	NE 155TH ST - 25TH AVE TO 26TH AVE NE	Loitering. Loitering and property damage. During lunch breaks, students congregate in alley between 25th and 26th. Have sprayed graffiti on our fence. School needs to be a closed campus.	Work with school to encourage more students to park in existing school parking lot, in an effort to reduce number of students parking and loitering in neighborhood.	
BC 1045	MCDONNEL			x	x				NE 155TH ST - 25TH AVE TO 26TH AVE NE	High school students race through this cut-through from 25th heading east onto 155th, or they race along 26th rounding corners at excessive speeds onto 155th and head up to 25th.	Refer to SPD for enforcement.	
BC 1028	HOUGH	x		x					NE 155TH ST - 26TH AVE NE	Constant speeding between stop signs by teenagers right after school & weekends. Need roundabouts and stop signs like Seattle has. Someone's going to get hurt sooner or later, especially children.	Refer to SPD for enforcement.	



Briarcrest Neighborhood Identified Concerns Table												
ID	LASTNAME	SIGN	VEGETATION	SPEED	VOLUME	PEDESTRIAN	BIKE	OTHER	LOCATION	PROBLEM DESCRIPTION	RESPONSE	STATUS
BC 1029	HOUGH							x	NE 155TH ST - 26TH AVE NE	Parking. Paved sidewalks will cause cars from the High school kids to park on my street in front of my house. Even during evening events I have people parking on my driveway! I have been blocked before.	Plan to install sidewalks on 25th would not remove parking on the east side of 25th Ave NE, so should not adversely impact adjacent streets.	
NE 158TH ST												
BC 1043B	MCDONNEL							x	NE 158TH from 25th to 28th Ave NE	School event parking. When cars are parked on both sides of 155th and 158th, only one car can pass thru. The road becomes too narrow during school events. The school needs to create more event parking on site.	NE 155th and 158th are 28' wide which is sufficient to allow parking both sides and one through lane. Existing parking restrictions near some of the corners. Removing parking on one side would result in wider through lane and possibly higher speeds. Work with school on parking to encourage greater use of on site parking and look at alternatives for special events.	
BC 1068	VandenBurg			x		x			NE 158th St - 30th Ave NE	Main thorough fair - people/kids walking to Elem. School. Needs traffic calming, sidewalks and street lights.	Add south side of NE 158th St from 28th to 25th Ave NE to sidewalk list. Existing stop signs on NE 158th St at 26th, 27th and 30th Ave NE.	Funding source required.
BC 1068	VandenBurg	x							NE 158th St - 30th Ave NE	Need parking restrictions near corners to improve visibility.	Install parking restriction to improve visibility.	Work order pending.



Briarcrest Neighborhood Identified Concerns Table												
ID	LASTNAME	SIGN	VEGETATION	SPEED	VOLUME	PEDESTRIAN	BIKE	OTHER	LOCATION	PROBLEM DESCRIPTION	RESPONSE	STATUS
NE 160TH ST												
BC 1001	TAYLOR					x			NE 160TH ST	Poorly defined walkways - we need sidewalks everywhere! Lots of children. Walking to Shorecrest HS, Briarcrest Grade school, etc. are at risk due to lack of sidewalk.	Add both sides of NE 160th St from 25th Ave NE to 28th Ave NE to walkway project list.	Funding source required.
BC 1036	PARKER			x	x				NE 160TH ST - 25TH AVE TO 27TH AVE NE	NE 160th St in Briarcrest neighborhood is much too fast. No attention to stop signs and right of way at traffic circle at 27th Ave NE and NE 160th . Put more circles on NE 160th St.	Refer to SPD for "Stop" enforcement. Existing traffic circle at 27th. Install additional circle at 28th to help lower speeds. (High priority, residents are currently circulating petition).	
BC 1009	MAGNELLI							x	NE 160TH ST - 27TH AVE NE	Slurry seal has obscured curbs. No adequate drainage. Traffic drives over curbs and lawns when rounding traffic island.	Install curb ramps and reconstruct curbs on corners. (Scheduled for installation in 2006)	Completed fall 2006.
BC 1002	TAYLOR			x				x	NE 160TH ST - 27TH AVE NE	There is a traffic circle - the SW corner has a very low curb and some drivers drive over the curb (so they don't have to slow down) or (in order to get around the circle faster). Raising the curb would discourage drivers from doing this.	Install curb ramps and reconstruct curbs on corners. (Scheduled for installation in 2006)	Completed fall 2006.



Briarcrest Neighborhood Identified Concerns Table												
ID	LASTNAME	SIGN	VEGETATION	SPEED	VOLUME	PEDESTRIAN	BIKE	OTHER	LOCATION	PROBLEM DESCRIPTION	RESPONSE	STATUS
BC 1017	TAYLOR, M			x	x	x			NE 160TH ST - 28TH AVE NE	Traffic circle needed to slow speeding on NE 160th and to protect school children and other pedestrians. Most of the speeding on NE 160th is going into or out of LFP. They seem to treat our neighborhood street as an expressway from LFP to 25th Ave NE.	Refer to SPD for enforcement. Existing traffic circle at 27th. Install additional circle at 28th to help lower speeds (High priority, residents are currently circulating petition).	Temporary traffic circle installed fall 2006.
BC 1010	MAGNELLI			x		x			NE 160TH ST - 35TH AVE NE TO 27TH AVE NE	Pedestrians have no sidewalks. Traffic can be heavy, speeds are excessive!	Refer to SPD for enforcement. Existing traffic circle at 27th. Install additional circle at 28th to help lower speeds (High priority, residents are currently circulating petition). Add NE 160 St from 25th to east of 28th (Shoreline City limit) to walkway project list. (High priority)	Temporary traffic circle installed fall 2006. Funding source required for walkway.
BC 1060	THOMPSON								NE 160TH St between 25th Av NE and LFP	Excessive speed. I would like to see traffic circles at all of the intersections along 160th.	Refer to SPD for enforcement. Existing traffic circle at 27th. Install additional circle at 28th to help lower speeds (High priority, residents are currently circulating petition).	Temporary traffic circle installed fall 2006.



Briarcrest Neighborhood Identified Concerns Table												
ID	LASTNAME	SIGN	VEGETATION	SPEED	VOLUME	PEDESTRIAN	BIKE	OTHER	LOCATION	PROBLEM DESCRIPTION	RESPONSE	STATUS
BC 1071	Guy					x			NE 160th btwn 25th and 28th Av NE	Need sidewalks for safety. People / kids walking to school / Hamlin Park. Cars drive too fast.	Refer to SPD for enforcement. Existing traffic circle at 27th. Install additional circle at 28th to help lower speeds (High priority, residents are currently circulating petition). Add NE 160 St from 25th to east of 28th (Shoreline City limit) to walkway project list. (High priority)	Temporary traffic circle installed fall 2006. Funding source required for walkway.
NE 168TH ST												
BC 1033A	ANDERSON			x					NE 168TH ST - 25TH AVE TO 27TH AVE NE	Excessive speed on eastbound NE 168th St between 25th and 27th Ave NE.	Revise curb alignment to require westbound motorists continuing onto non-arterial segment of N 168th St to make a 90 degree turn. This may help to reduce speeds and / or discourage motorists from turning eastbound onto NE 168th St.	Funding source required.



Briarcrest Neighborhood Identified Concerns Table												
ID	LASTNAME	SIGN	VEGETATION	SPEED	VOLUME	PEDESTRIAN	BIKE	OTHER	LOCATION	PROBLEM DESCRIPTION	RESPONSE	STATUS
BC 1033B	ANDERSON				x				NE 168TH ST - 25TH AVE TO 27TH AVE NE	Cut through traffic.	Revise curb alignment to require westbound motorists continuing onto non-arterial segment of N 168th St to make a 90 degree turn. This may help to reduce speeds and / or discourage motorists from turning eastbound onto NE 168th St.	Funding source required.
OTHER												
BC 1023	PIPER-SACK	x							Alleys btwn 25th and 26th Av NE	School event parking often spills over into side streets. Need to have "No Parking" in Front of Alley Entrance" pr have marked parking stalls on street.	Installing and maintaining signs at all alley locations would require considerable resources and add to sign clutter in the neighborhood. Work with Traffic Advisory Committee to identify and address chronic problem locations. Work with school to address special event parking.	
BC1077	Hendrix					x			Bothell Way near McDonald's at NE 145th St	Difficult to cross street.	Bothell Way is a State Route. Refer concern to WSDOT.	

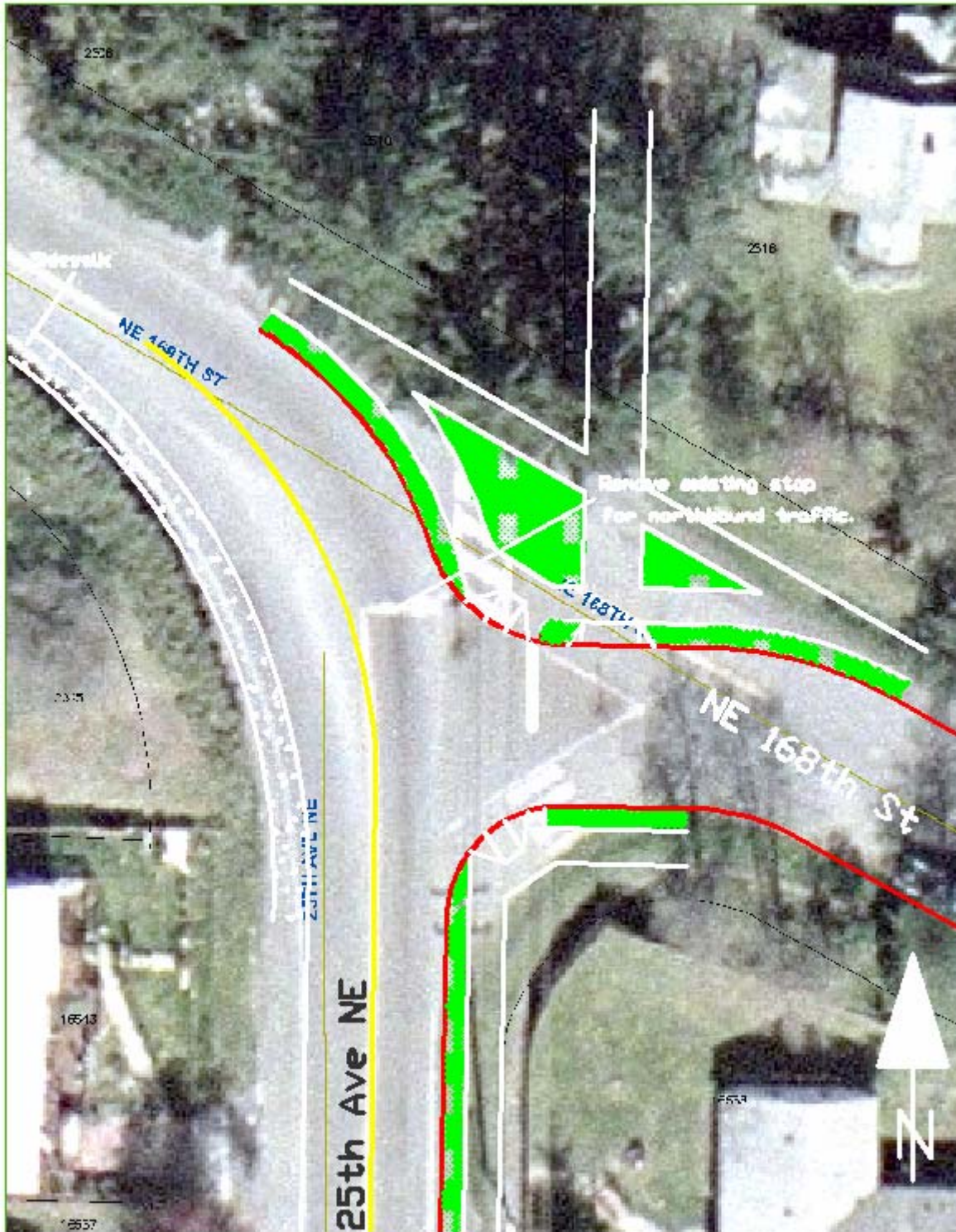


Figure 2: Proposed reconfiguration of 25th Ave NE and NE 168th St.

GENERAL COMMENTS FROM JUNE 16, 2006 OPEN HOUSE SURVEY

- I'm extremely excited that the city has taken the initiative to fix these problems. Thanks!
- Something needs to be done to slow drivers at the curve on 28th Ave north of 163rd (does not intersect). When collecting petitions for traffic circle, I heard many complaints about speeding in that area and south of 160th.
- The proposal for 25th NE and NE 168th allowing no restrictions north or south is a killer of an idea. This will create nothing but a speedway.
- Thank you for putting a traffic light on 150th and 15th in your plan. I think that that will help a lot with traffic being able to turn and crossing the street when you are a pedestrian.
- Traffic policeman other than 160th, 27th, 25th speed limits.
- Thank you for your hard work and patience with public. ☺
- I question if 25th NE is wide enough to allow parking (with all wheels on roadway). Most vehicles now park half or more on what would be the sidewalk area.
- Cars park on parking strip clear up to fences leaving no alternative but to walk in the street – not bad if walking south towards oncoming traffic. Risky for me, an adult, if walking north with traffic behind me. Sidewalk on west side of street is virtually inaccessible because of embankment and high railing. A clear danger for children. Also, when coming out of my driveway at 16052, when cars are parked too far up off the curb, I have zero visibility of northbound cars until my car is actually nosed out onto the street. Surely, I'm not the only one who has that problem.
- [Name illegible] – owner of Everest Kitchen – great guy! Entrance to his restaurant has a big pothole – he shares that driveway with the Chinese restaurant to the south of his business. Neighborhood sub area master plan will help with establishing optimum land use in southeast area of Briarcrest.
- A map of Briarcrest shows only two places with 4 way stop signs. The one at 158th and 26th seems a mistake to me. 26th has lower traffic. Why bring these cars on 158th to a halt? 145th carries heavy traffic. It is sometimes difficult to take a left turn off 27th onto 145th. What about a traffic light at this intersection?
- Restore no parking signs on south side of NE 150th between 17th NE and westbound past my house 1545 NE 150th. Painted crosswalks at 17th NE and NE 150th for children's foot traffic for school bus walking. Thank you for soliciting community input!!
- I prefer few changes to traffic flow. Roadside improvements are ok.