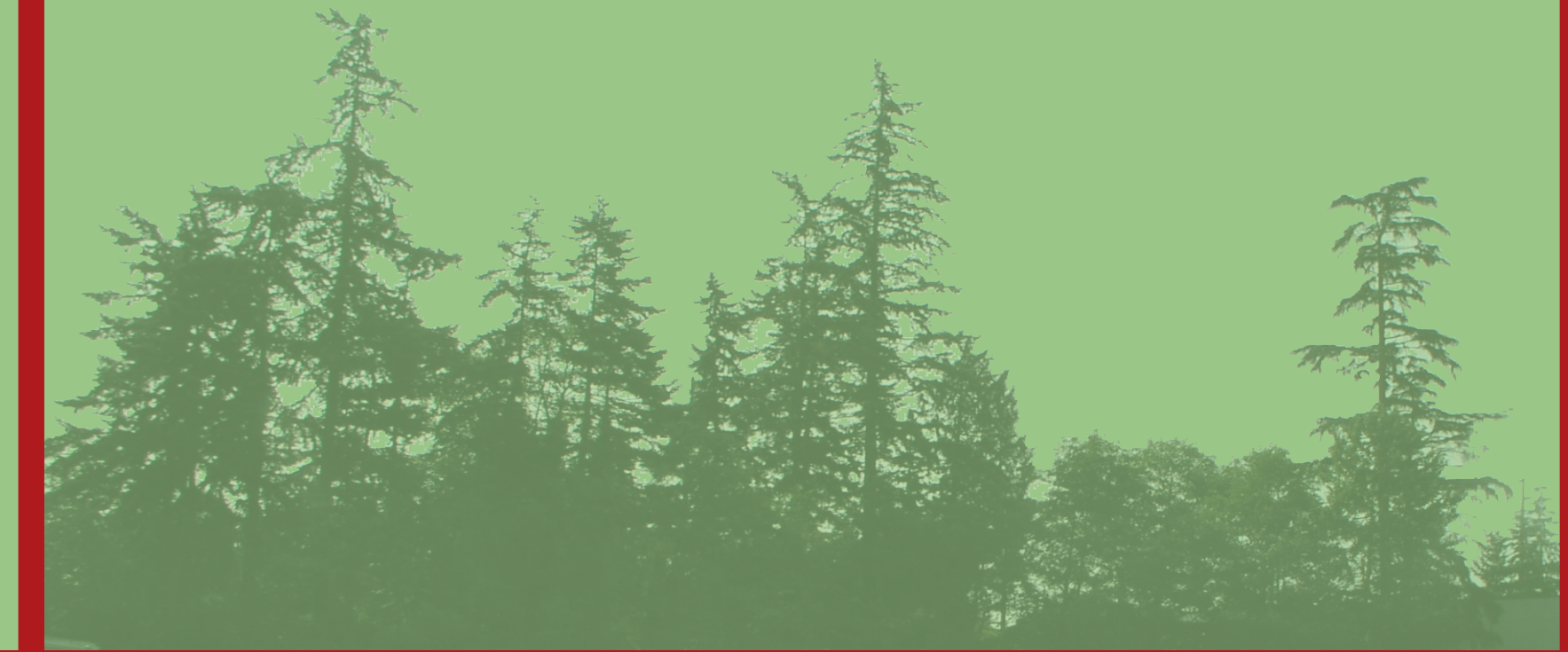


Stormwater Management

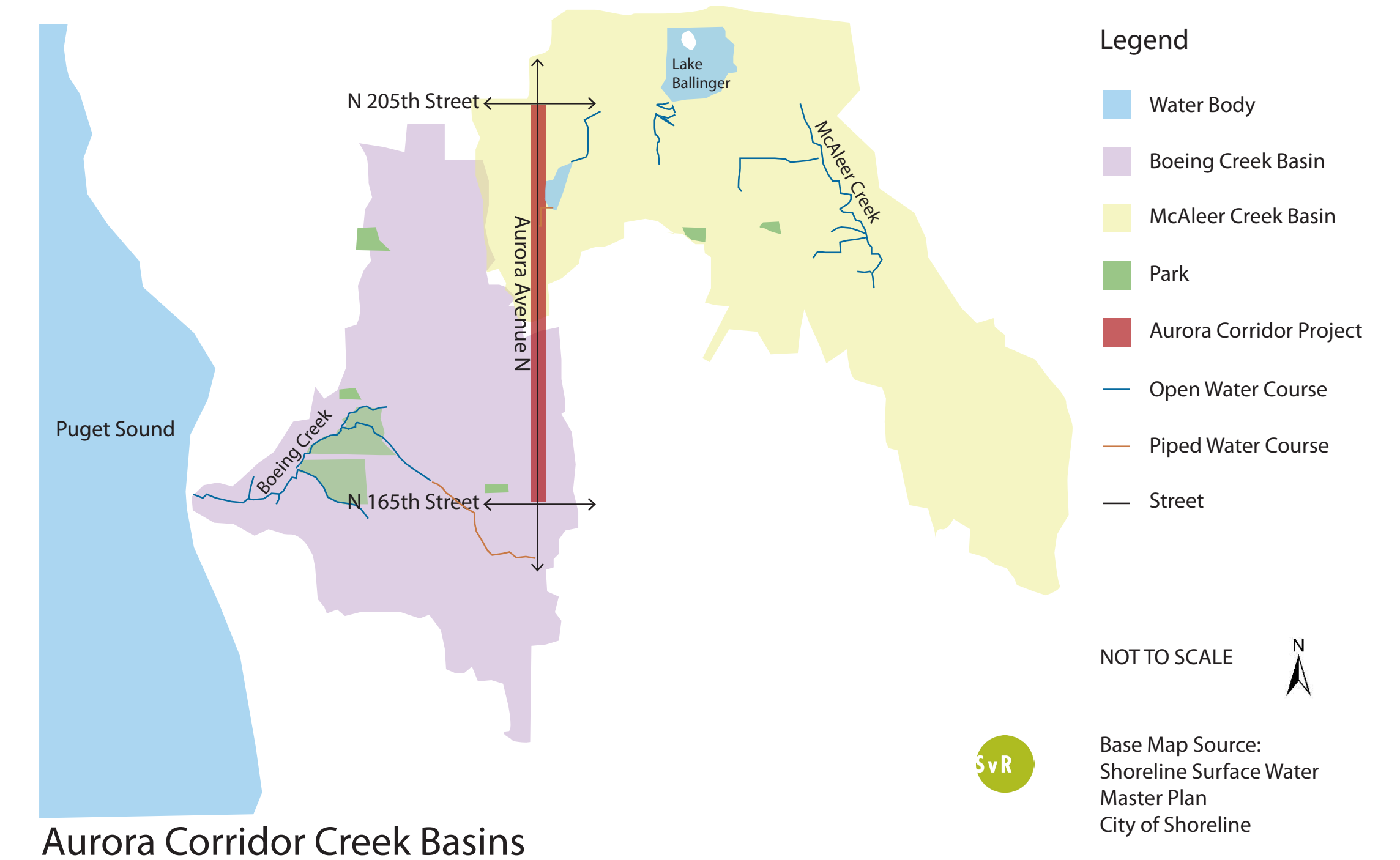
on Aurora Avenue



Existing Conditions



- Typically no curb and gutter.
- Drains to Boeing Creek and McAleer Creek.
- Sediment deposits on roadway.
- Soils (glacial till) have low infiltration rates.
- Right-of-way limitations.
- Commercial corridor.



Regulations

- Meet current City of Shoreline stormwater code.
- WSDOT Roadway Standards.
- No flow control required.
- Improve conveyance and collection.
- Maintain subbasin boundaries
- Underground utilities.



Goals

- Target upcoming stormwater regulatory changes.
- Meet Council goals for sustainability and construction of Aurora.
- Inform the community about Low Impact Development and natural drainage.
- Enhance aesthetics.
- Maintaining user safety and mobility.
- WSDOT approval.