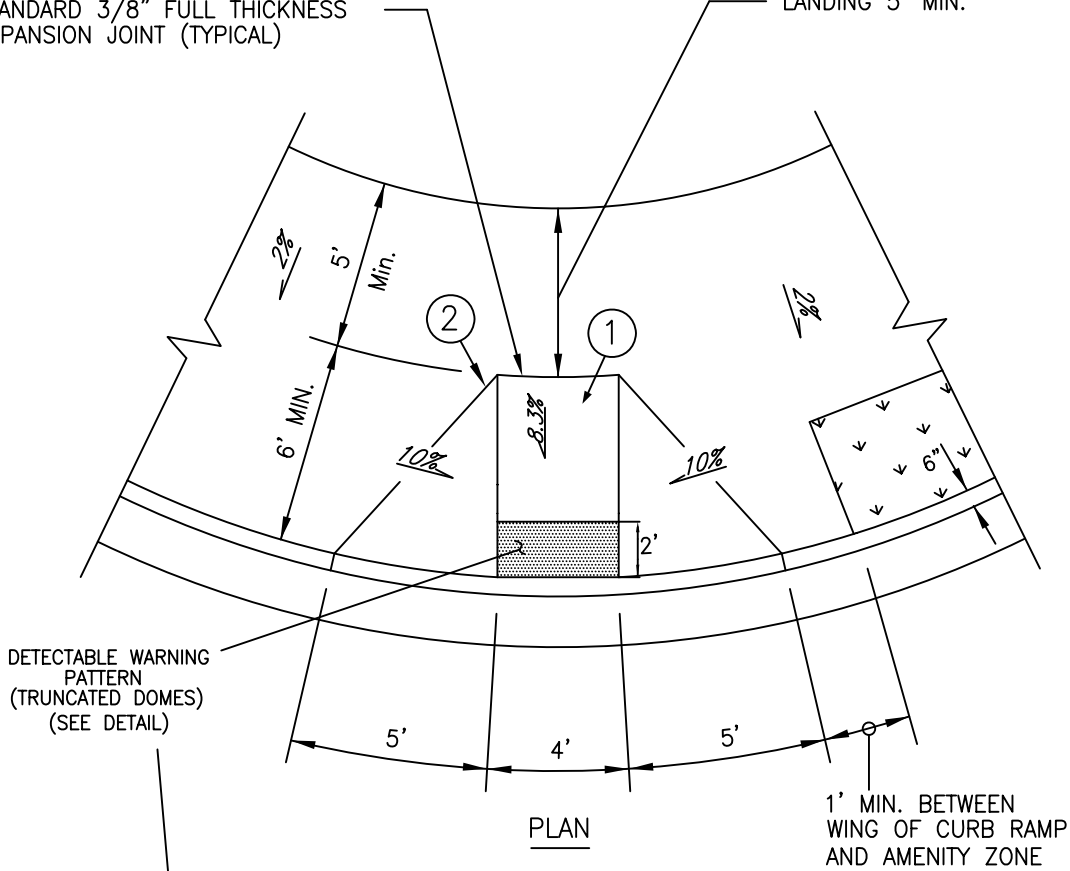


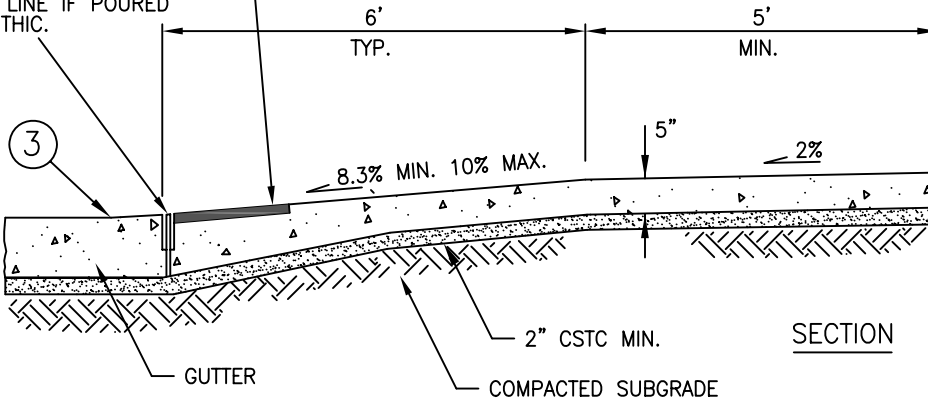
STANDARD 3/8" FULL THICKNESS EXPANSION JOINT (TYPICAL)

LANDING 5' MIN.



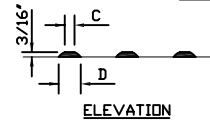
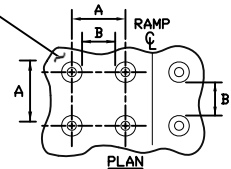
PLAN

3/8" EXPANSION JOINT. SCORE LINE IF POURED MONOLITHIC.



SECTION

DETECTABLE WARNING PATTERN (TRUNCATED DOMES) SHALL BE BLACK UNLESS APPROVED BY THE DIRECTOR OR DESIGNEE



	MIN.	MAX.
A	1 3/8"	2 3/8"
B	3/8"	1 1/2"
C	7/16"	3/4"
D	7/8"	1 1/16"

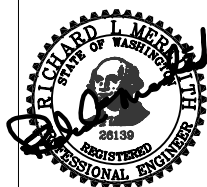
DETECTABLE WARNING PATTERN DETAIL
TRUNCATED DOMES
(SEE NOTE 6)

NOTES

- ① BROOM FINISH PERPENDICULAR TO THE DIRECTION OF PEDESTRIAN TRAVEL
- ② FULL DEPTH EXPANSION JOINT
- ③ NO LIP AT GUTTER LINE
4. CURB RAMPS WILL BE POURED INTEGRAL WITH SIDEWALK AND SHALL BE ISOLATED BY EXPANSION JOINT MATERIAL ON ALL SIDES, BUT NOT AT END OF RAMP ADJACENT TO THE ROADWAY.
5. CATCH BASINS & INLETS SHALL BE INSTALLED A MINIMUM OF 12" FROM THE BASE OF CURB RAMP LANDING.
6. DETECTABLE WARNING PATTERN (TRUNCATED DOMES) SHALL BE FLUSH WITH RAMP TEXTURE +/- NO GREATER THAN 1/4".
7. CONCRETE SHALL BE A MINIMUM OF 5" NOT INCLUDING DETECTABLE WARNING PATTERN (TRUNCATED DOMES).
8. NO LAMPBLACK SHALL BE PLACED IN CURB RAMPS.



Public Works
Planning
and
Development
Services



Curb Ramp: Type A

318

NOT TO SCALE

Revision Date
December 2006