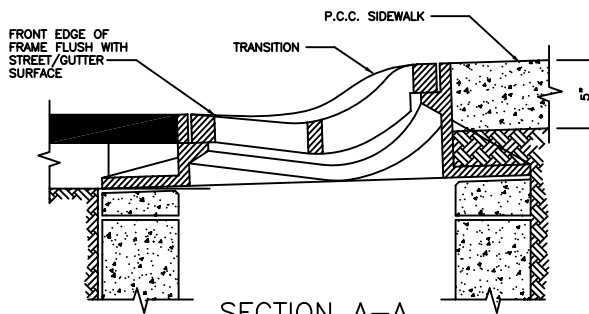


PLAN



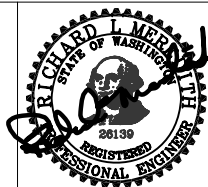
SECTION A-A

NOTES:

1. SET FRAME TO GRADE & CONSTRUCT ROAD & CURB TO BE FLUSH AT FRONT & BACK OF FRAME.
2. THE WORDS "PROPERTY OF CITY OF SHORELINE" SHALL BE OMITTED IF GRATE IS ON A PRIVATE SYSTEM.
3. NOT TO BE USED ON THICKENED EDGE ROADWAYS.



Public Works
Planning
and
Development
Services



Rolled Curb Frame & Grate Installation

735

NOT TO SCALE

Revision Date
December 2006