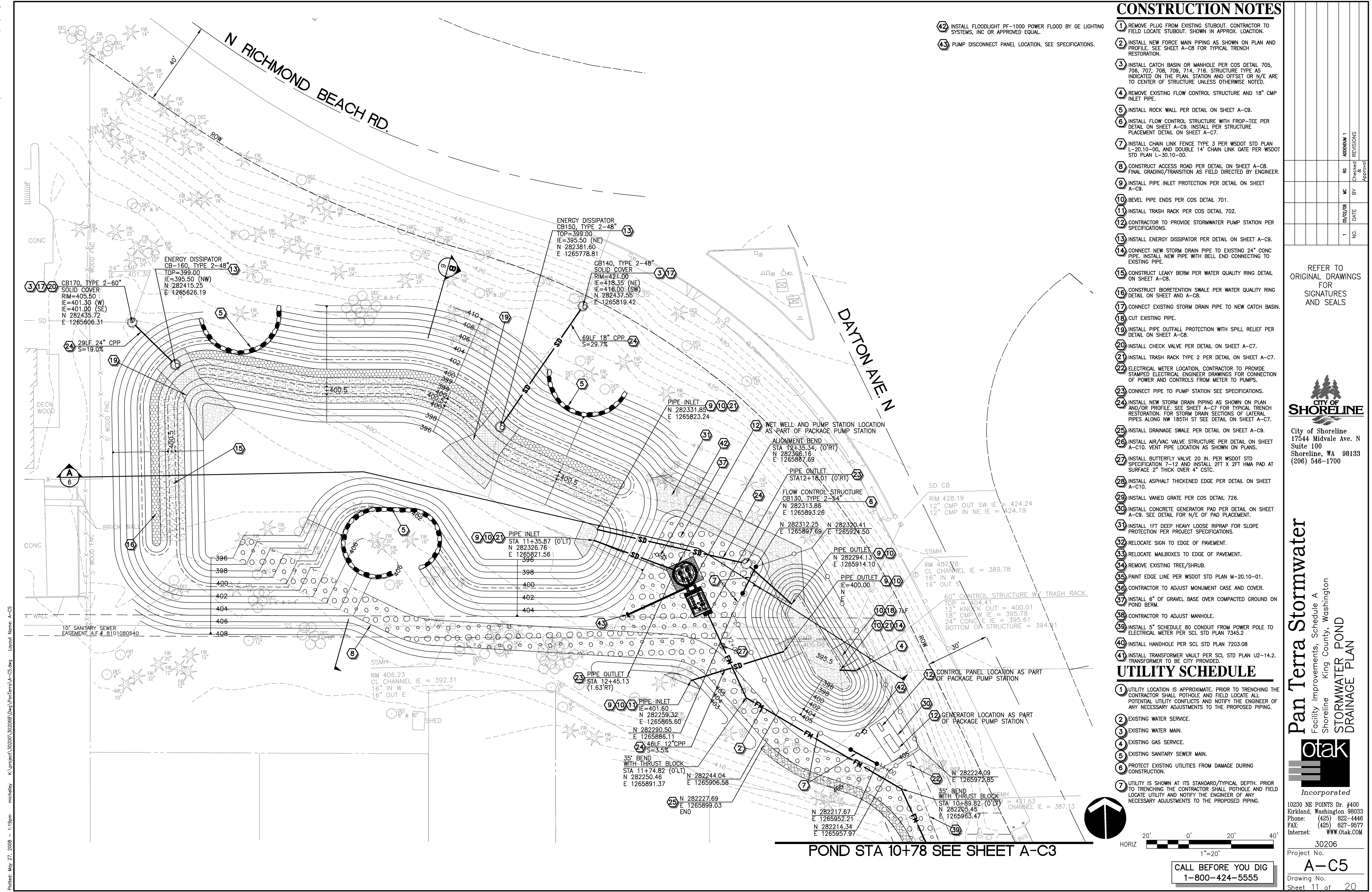


XREF LIST  
Ltscale: 1  
Resolved  
S206B190  
C206T070  
C206N350  
S206Y220  
C206BG431  
C206BN021  
TBLK-A  
C206BR270  
C206BU631



REFER TO  
ORIGINAL DRAWINGS  
FOR  
SIGNATURES  
AND SEALS



City of Shoreline  
17544 Midvale Ave. N  
Suite 100  
Shoreline, WA 98133  
(206) 546-1700

**Pan Terra Stormwater**  
Facility Improvements, Schedule A  
Shoreline King County, Washington  
**STORMWATER POND  
DRAINAGE PLAN**

**Otak**  
Incorporated  
10230 NE POINTS Dr. #400  
Kirkland, Washington 98033  
Phone: (425) 822-4446  
FAX: (425) 827-9577  
Internet: WWW.Otak.COM

30206  
Project No.  
**A-C5**  
Drawing No.  
Sheet 11 of 20

CALL BEFORE YOU DIG  
1-800-424-5555